



Lead2Pass.com

First Test, First Pass!

<http://www.lead2pass.com>

Copyright © 2006-2011 Lead2pass.com , All Rights Reserved.



Exam Code: ICDL-Widows

Exam Name: The ICDL L4 widows exam

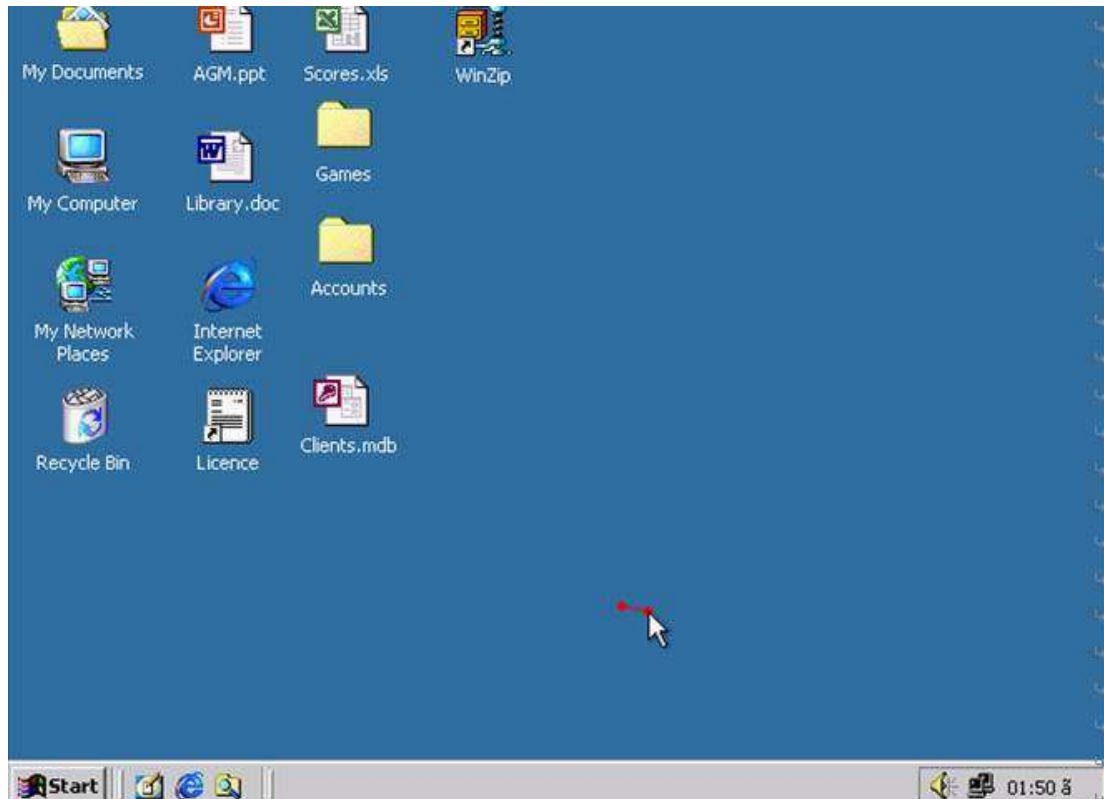
Vendor: ICDL

Version: DEMO

Part: A

1: On the simulated Windows desktop carry out the necessary steps to restart the computer.

Note: Do not use Ctrl + Alt + Delete for this question.



Select->start->shutdown->restart->ok

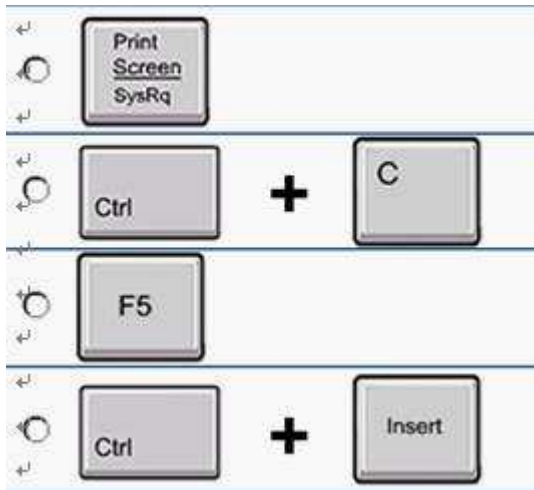
Correct Answers:

2: If the computer application you are working on has "frozen" what is the first thing you should do?

- A.Re-install the non-responding application.
- B.Press ctrl+Alt+Delete.
- C.Turn off the PC's power supply.
- D.Slect Exit from the application's File menu.

Correct Answers: B

3: Pressing which of the following keys would place a picture of what is currently displayed on your monitor onto the clipboard?

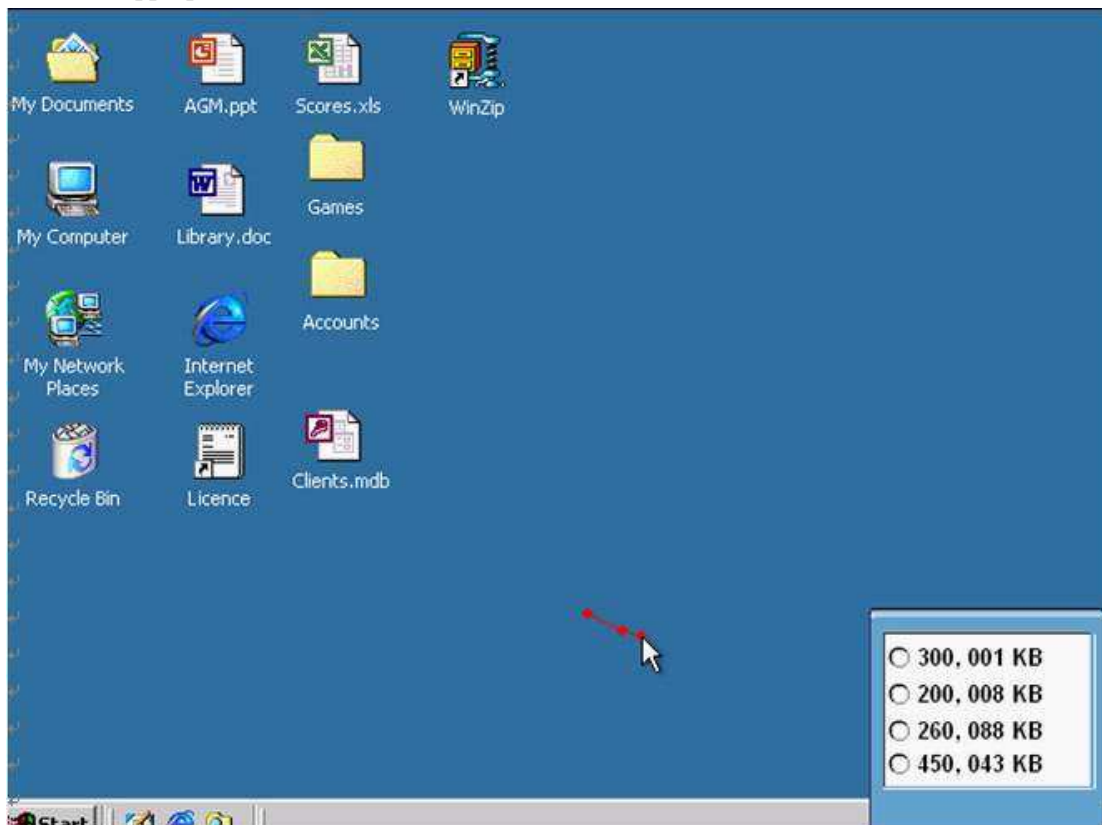


A

Correct Answers:

4: Use the simulated Windows Desktop to find out how much RAM is installed.

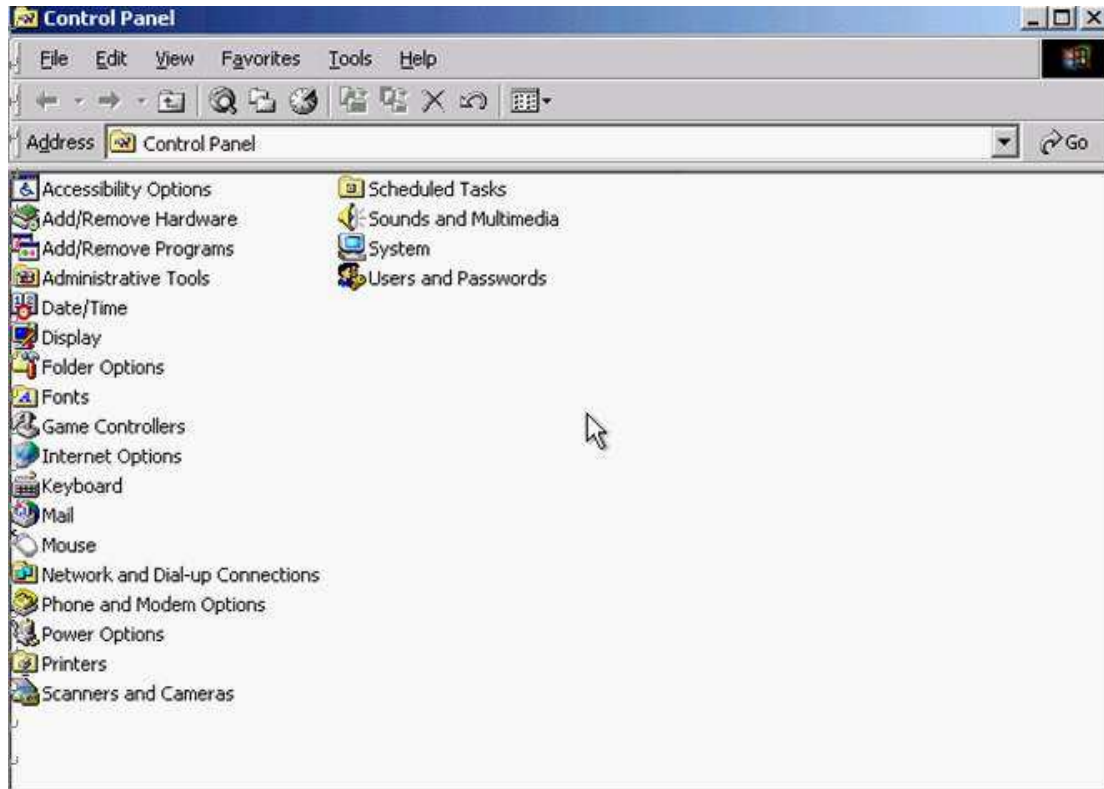
Select the appropriate radio button then click on SUBMIT.



R.click on my computer->properties->General->select the RAM Speed->ok

Correct Answers:

5: Change the keyboard language to UK English.



Select->keyboard->input Locales->select to English UK->press Set as Defaults->ok

Correct Answers: