



**Vendor:** Cisco

**Exam Code:** 352-001

**Exam Name:** CCDE Design Expert Written Exam, v2.1

**Version:** DEMO

### QUESTION 1

Which three options are important functions of IPv6 first-hop security? (Choose three.)

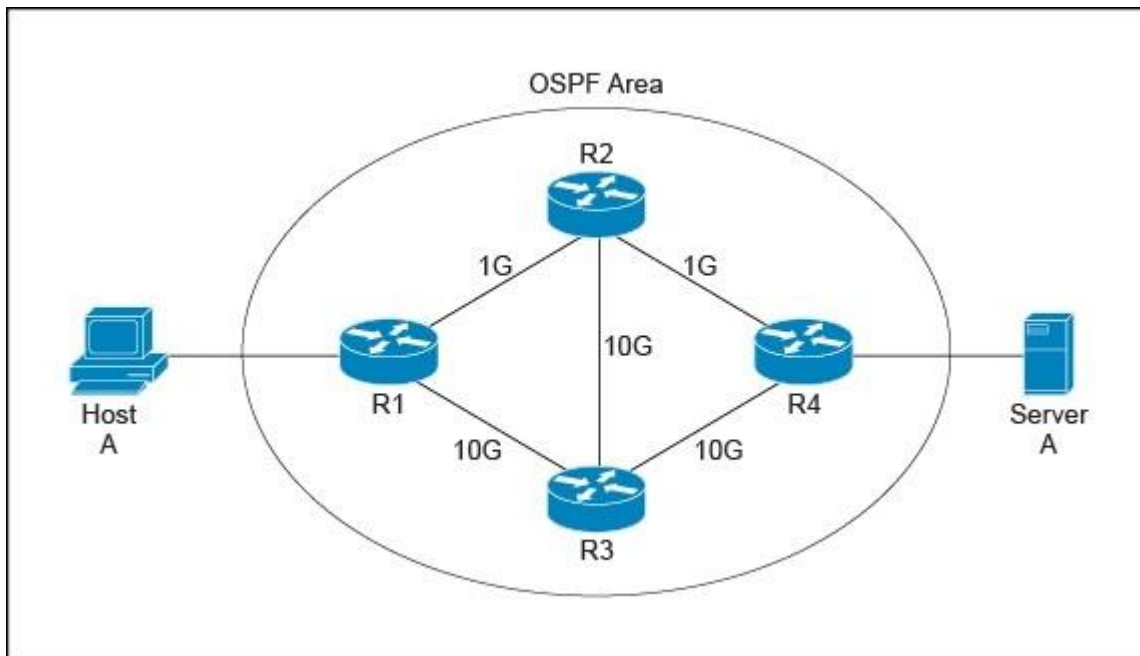
- A. implements a broadcast-control mechanism
- B. limits IPv6 route advertisement in the network
- C. suppresses excessive multicast neighbor discovery
- D. prevents IPv6 packet fragmentation
- E. prevents rogue DHCP servers from assigning IPv6 addresses

**Answer:** BCE

### QUESTION 2

Refer to the exhibit. After this new OSPF design with per-packet load balancing was implemented, Host A reported that large file downloads from Server A became slow and sometimes failed.

The operations team discovered that packets are arriving out of order on R1. The operations team discovered that packets are arriving out of order on R1. Which cost-conscious redesign action will fix the issue?



- A. Upgrade all links to 10 Gb/s.
- B. Adjust MTU sizes to 1500 on all interfaces.
- C. Adjust the OSPF auto-cost reference bandwidth on R4.
- D. Adjust the OSPF auto-cost reference bandwidth on all routers.

**Answer:** D

### QUESTION 3

A customer is running OSPF on a broadcast network type in a DMVPN single-hub, single-cloud topology and dynamically routes from the data center to the branch networks. The customer wants to speed up convergence and to avoid having to elect DRs by changing the network type to point-to-multipoint at the data center and to point-to-point at the branches.

Which option will meet the fast convergence requirement and not break any OSPF neighbor adjacencies when this redesign is implemented?

- A. The OSPF area containing the branch office routers should be set to stubby.
- B. The OSPF neighbors should be set manually at the data center router.
- C. The OSPF hello and dead timers should be adjusted at the data center router to match the timers at the remote sites.
- D. The OSPF database should be cleared manually for the new network types to take effect.
- E. The interface MTU sizes should be increased on all routers.

**Answer: C**

#### QUESTION 4

On a large enterprise security solution, which two options are IDS or IPS modes of operation? (Choose two.)

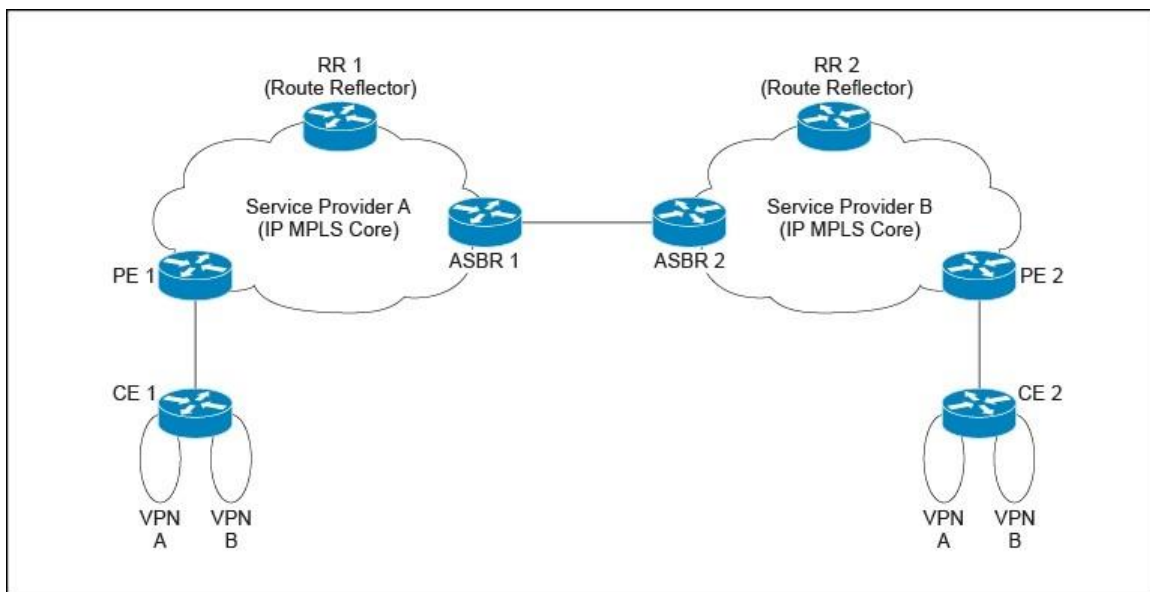
- A. transparent mode
- B. promiscuous mode
- C. traffic discovery mode
- D. routed mode
- E. inline mode

**Answer: BE**

#### QUESTION 5

Refer to the exhibit. Service Provider A has offered to help Service Provider B to provide local connectivity for a customer who has a business operation in North America and recently opened an office in Asia. The service to be offered for the customer is a Layer 3 MPLS VPN. Service Provider A and Service Provider B have never shared any business dealings or interconnected their networks.

What is the most secure and easiest way for the two service providers to interconnect?



- A. carrier supporting carrier
- B. eBGP VPNv4 multihop between route reflectors
- C. back-to-back VRF
- D. VPNv4 peering between ASBRs

**Answer: C**

#### **QUESTION 6**

A large retail bank is designing a unified communications solution to be deployed to its 200 branches. Its current network traffic consists of a web-based portal, Internet browsing, and general file server access. Each branch has between 15 and 20 users. The current WAN is based on Layer 3 MPLS and the customer manages its own CE routers. The WAN circuit interface to the service provider is Gigabit Ethernet, although the MPLS service that is contracted from the service provider is 10 Mb/s. The design is to use a DSCP-based four-class QoS policy to manage traffic demands. From the options below, which two QoS design options that should be implemented on the customer side will meet the requirement? (Choose two.)

- A. Shape traffic to 10 Mb/s on the CE router.
- B. Police traffic to drop outbound traffic that exceeds 10 Mb/s.
- C. Classify DSCP value EF for call signaling and voice packets, and place traffic in a strict priority queue.
- D. Priority queue traffic to demand up to 80% of total bandwidth.
- E. Enable DSCP-based WRED on all AF classes.

**Answer: AE**

#### **QUESTION 7**

What is the definition of the FCAPS framework?

- A. an ISO framework that establishes a model for network management and contains guidelines for managing objects, the management database, and the application entity
- B. a five-volume framework for service management that covers design, transition, and delivery of service, and from which the ISO 20000 was developed
- C. a series of tools for process improvement that uses statistical methods to reduce defects in processes and manufacturing
- D. a framework for enterprise architecture that provides a comprehensive approach for designing, planning, implementing, and governing an enterprise information architecture
- E. a framework for enterprise IP Address Management (IPAM) based on the IANA trusted IP lease allocation scheme

**Answer: A**

#### **QUESTION 8**

What are three tools for ongoing monitoring and maintenance of a voice and video environment? (Choose three.)

- A. active monitoring via synthetic probes to measure loss, latency, and jitter
- B. passive monitoring via synthetic probes to measure loss, latency, and jitter
- C. flow-based analysis to measure bandwidth mix of applications and their flows
- D. flow-based analysis with PTP time-stamping to measure loss, latency, and jitter

E. call management analysis to identify CAC failures and call quality issues

**Answer:** ACE

**QUESTION 9**

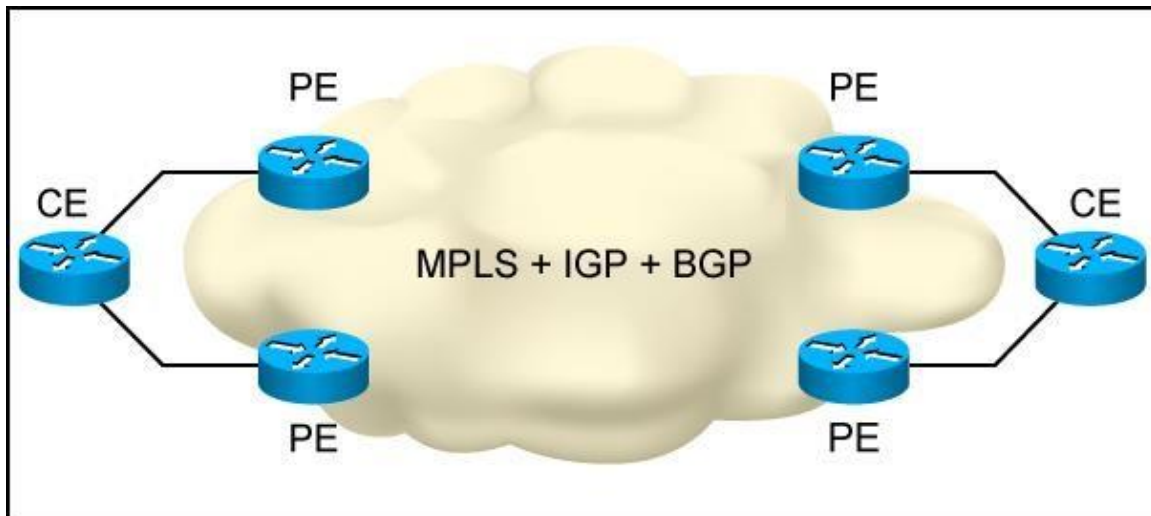
In an MPLS-based network, there is a link that constantly flaps. This flapping makes the network constantly reconverge and causes it to become unstable. Which two technologies can be deployed to resolve the design failure? (Choose two.)

- A. IP Event Dampening
- B. BFD
- C. Carrier Delay
- D. IP Routing Protocol Route Purge

**Answer:** AC

**QUESTION 10**

Refer to the exhibit. You are designing an MPLS network with Layer 3 VPNs, where the traffic path must be the same in both directions inside the MPLS network to ensure that symmetric routing occurs. The sites are connected to two PE routers. Which two design considerations will allow you to achieve this symmetric routing? (Choose two.)



- A. When MPLS TE is used, the bidirectional TE tunnel automatically provides symmetric routing.
- B. The MPLS TE tunnels should be set up in both directions so that the same path is used.
- C. There should not be any equal cost paths for IGP inside the MPLS backbone, the IGP routing should use the same path in both directions, and the BGP routing does not matter.
- D. There should not be any equal cost paths for BGP inside the MPLS backbone, the BGP routing should use the same path in both directions, and the IGP routing does not matter.
- E. There should not be any equal cost paths for the IGP and the BGP inside the MPLS backbone, and both IGP and BGP routing should use the same path in both directions.

**Answer:** BE

**QUESTION 11**

You are designing an IEEE 802.1X solution for a customer, where the network supports a large number of IP phones and printers. You plan to configure MAC address bypass for the phones and printers. What is your primary design and security concern?

- A. the additional AAA traffic on the network
- B. the placement of the AAA server
- C. the potential of MAC address spoofing
- D. the scaling of the MAC address database

**Answer: C**

**QUESTION 12**

When you design a network that uses IPsec, where can you reduce MTU to avoid network fragmentation?

- A. on both ends of the TCP connection
- B. on the side closest to the client
- C. on the side closest to the server
- D. in the WAN

**Answer: A**

**QUESTION 13**

What is a characteristic of traffic shaping?

- A. It minimizes traffic transmission intervals.
- B. It remarks excess packets above the committed rates.
- C. It delays and can drop excess traffic.
- D. It classifies traffic based on certain characteristics.

**Answer: C**

**QUESTION 14**

What is the purpose of dynamically created tunnels using IPv6 multicast?

- A. multicast source registration to the RP
- B. bypass of the RPF check to the RP
- C. transport of all IPv6 multicast traffic to the RP
- D. first-hop router registration to the RP

**Answer: D**

## Thank You for Trying Our Product

### Braindump2go Certification Exam Features:

- ★ More than **99,900** Satisfied Customers Worldwide.
- ★ Average **99.9%** Success Rate.
- ★ **Free Update** to match latest and real exam scenarios.
- ★ **Instant Download** Access! No Setup required.
- ★ Questions & Answers are downloadable in **PDF** format and **VCE** test engine format.
- ★ Multi-Platform capabilities - **Windows, Laptop, Mac, Android, iPhone, iPod, iPad**.
- ★ **100%** Guaranteed Success or **100%** Money Back Guarantee.
- ★ **Fast**, helpful support **24x7**.



View list of all certification exams: <http://www.braindump2go.com/all-products.html>



Microsoft



ORACLE



CITRIX



JUNIPER  
NETWORKS



EMC<sup>2</sup>  
where information lives<sup>®</sup>

**10% Discount Coupon Code: BDN2014**