



**Vendor:** EXIN

**Exam Code:** EX0-113

**Exam Name:** TMap Next Test Engineer

**Version:** DEMO

### QUESTION 1

See the specification of a discount campaign below:

|   |                |
|---|----------------|
| Children younger than 4 years of age (<4)                           | : free         |
| Children of 4 years or older, but younger than 13 years(>4 and <13) | : 50% discount |
| Adults older than 64 years (>64)                                    | : 50% discount |

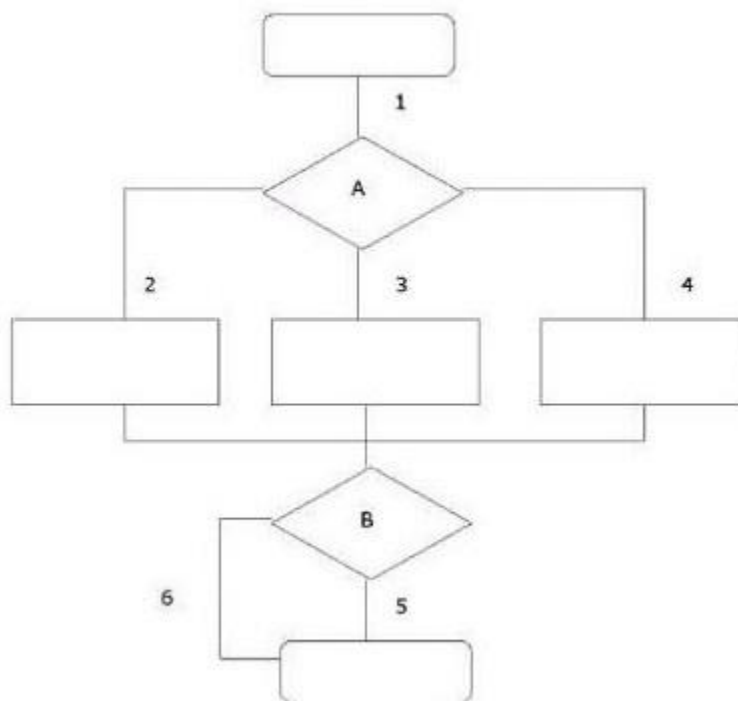
How many equivalence classes can be distinguished from the above specification?

- A. 3
- B. 4
- C. 5

**Answer: B**

### QUESTION 2

See the illustration below:



Which test situations can be differentiated when the coverage type paths test depth level 2 is used?

- A. 1-2; 2-3; 3-4; 2-4; 2-5; 2-6; 3-5; 3-6; 4-5; 4-6; 5-6
- B. 1-2; 1-3; 1-4; 2-5; 3-5; 4-5; 2-6; 3-6; 4-6
- C. 1-2-5; 1-2-6; 1-3-6; 1-3-5; 1-4-6; 1-4-5

Answer: B

**QUESTION 3**

The specification of test cases according to a test design technique follows five general steps. Which step is establishing the starting point? Which step is establishing the starting point?

- A. step 2
- B. step 3
- C. step 4
- D. step 5

Answer: C

**QUESTION 4**

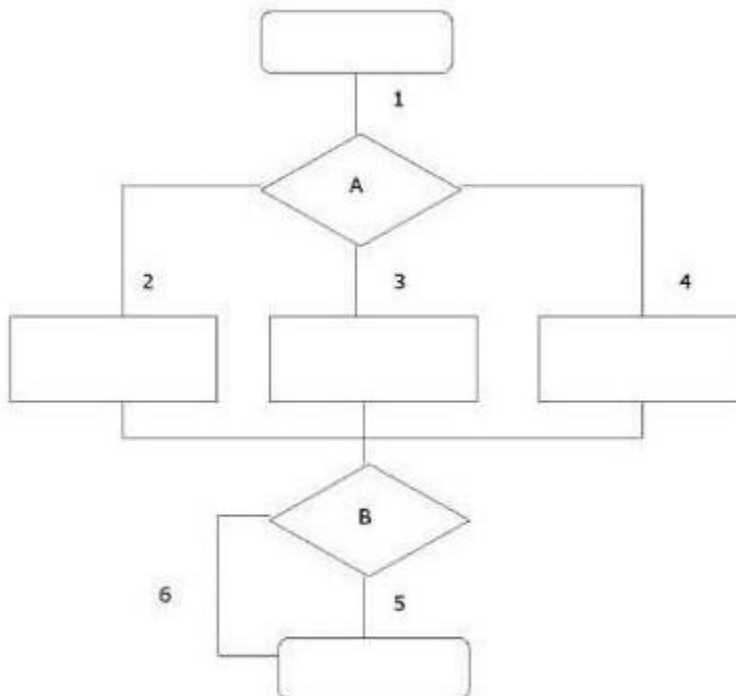
Which system development method is agile and contains structured guidelines for development testing?

- A. DSDM
- B. SDM
- C. XP

Answer: C

**QUESTION 5**

See the illustration below:



What is the minimum number of logical test cases generated by the use of the Process Cycle

Test if the coverage type paths test depth level 2 is used?

- A. 3
- B. 5
- C. 6
- D. 9

**Answer: C**

**QUESTION 6**

The test infrastructure consists of facilities and resources required to conduct testing effectively. Which facility does not belong to the testing infrastructure?

- A. test environments
- B. test design techniques
- C. test tools
- D. workplaces

**Answer: B**

**QUESTION 7**

See the specification below:

```
IF A AND (B OR C)
THEN error message
ENDIF
```

How many logical test cases are distinguished if Semantic Testing with coverage type decision points condition/decision coverage is used?

- A. 2
- B. 3
- C. 4
- D. 8

**Answer: A**

## Thank You for Trying Our Product

### Braindump2go Certification Exam Features:

- ★ More than **99,900** Satisfied Customers Worldwide.
- ★ Average **99.9%** Success Rate.
- ★ **Free Update** to match latest and real exam scenarios.
- ★ **Instant Download** Access! No Setup required.
- ★ Questions & Answers are downloadable in **PDF** format and **VCE** test engine format.
- ★ Multi-Platform capabilities - **Windows, Laptop, Mac, Android, iPhone, iPod, iPad**.
- ★ **100%** Guaranteed Success or **100%** Money Back Guarantee.
- ★ **Fast**, helpful support **24x7**.



View list of all certification exams: <http://www.braindump2go.com/all-products.html>



Microsoft



ORACLE



JUNIPER  
NETWORKS



EMC<sup>2</sup>  
where information lives<sup>®</sup>

**10% Discount Coupon Code: BDN2014**