



Vendor: Cisco

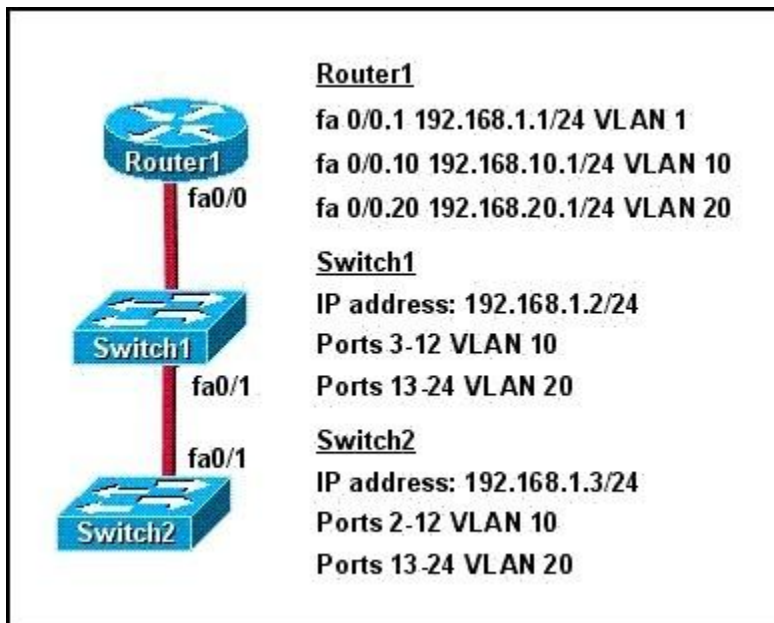
Exam Code: 640-816

Exam Name: ICND2 - Interconnecting Cisco Networking
Devices Part 2

Version: DEMO

QUESTION 1

Refer to the exhibit. How should the FastEthernet0/1 ports on the 2950 model switches that are shown in the exhibit be configured to allow connectivity between all devices?

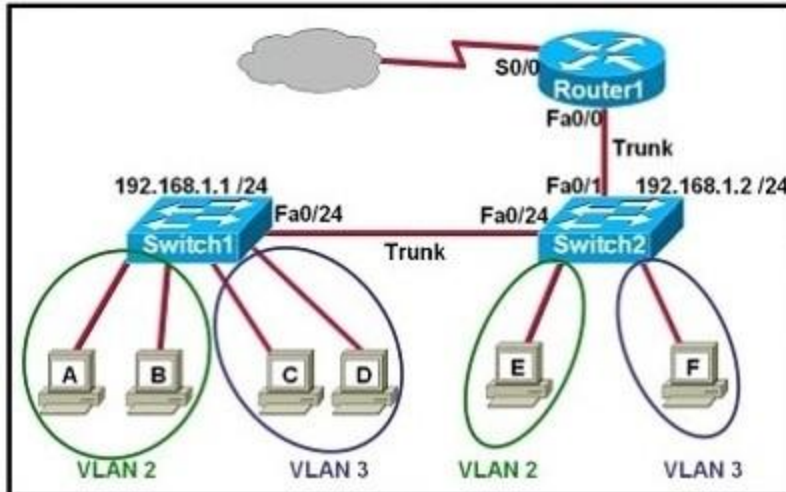


- A. The ports only need to be connected by a crossover cable.
- B. SwitchX(config)# interface fastethernet 0/1
SwitchX(config-if)# switchport mode trunk
- C. SwitchX(config)# interface fastethernet 0/1
SwitchX(config-if)# switchport mode access
SwitchX(config-if)# switchport access vlan 1
- D. SwitchX(config)# interface fastethernet 0/1
SwitchX(config-if)# switchport mode trunk
SwitchX(config-if)# switchport trunk vlan 1
SwitchX(config-if)# switchport trunk vlan 10
SwitchX(config-if)# switchport trunk vlan 20

Answer: B

QUESTION 2

Refer to the exhibit. Which two statements are true about interVLAN routing in the topology that is shown in the exhibit? (Choose two.)



- A. Host E and host F use the same IP gateway address.
- B. Router1 and Switch2 should be connected via a crossover cable.
- C. Router1 will not play a role in communications between host A and host D.
- D. The FastEthernet 0/0 interface on Router1 must be configured with subinterfaces.
- E. Router1 needs more LAN interfaces to accommodate the VLANs that are shown in the exhibit.
- F. The FastEthernet 0/0 interface on Router1 and Switch2 trunk ports must be configured using the same encapsulation type.

Answer: DF

QUESTION 3

A department decides to replace its hub with a Catalyst 2950 switch that is no longer needed by another department. To prepare the switch for installation, the network administrator has erased the startup configuration and reloaded the switch. However, PCs that are connected to the switch experience various connectivity problems. What is a possible cause of the problem?

- A. The VLAN database was not erased.
- B. The management VLAN is disabled.
- C. The running configuration should have been erased.
- D. The "mode" button was not pressed when the switch was reloaded.
- E. The switch was not configured with an IP address or a default gateway.

Answer: A

QUESTION 4

Refer to the exhibit. Why has this switch not been elected the root bridge for VLAN1?

```
Switch# show spanning-tree vlan 1
VLAN0001
Spanning tree enabled protocol rstp
Root ID    Priority    20481
          Address    0008.217a.5800
          Cost      38
          Port      1 (FastEthernet0/1)
          Hello Time 2 sec Max Age 20 sec Forward Delay 15 sec

Bridge ID  Priority    32769 (priority 32768 sys-id-ext 1)
          Address    0008.205e.6600
          Hello Time 2 sec Max Age 20 sec Forward Delay 15 sec
          Aging Time 300

Interface      Role Sts Cost      Prio.Nbr Type
-----
Fa0/1          Root FWD 19        128.1   P2p
Fa0/4          Desg FWD 38        128.1   P2p
Fa0/11         Altn BLK 57        128.1   P2p
Fa0/13         Desg FWD 38        128.1   P2p
```

- A. It has more than one interface that is connected to the root network segment.
- B. It is running RSTP while the elected root bridge is running 802.1d spanning tree.
- C. It has a higher MAC address than the elected root bridge.
- D. It has a higher bridge ID than the elected root bridge.

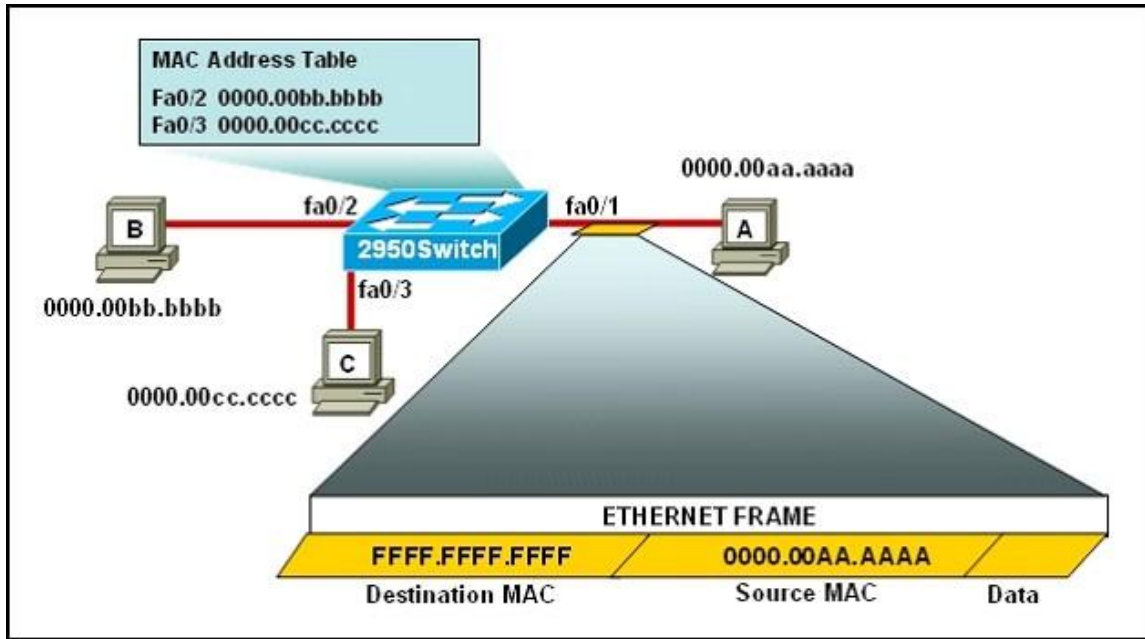
Answer: D

QUESTION 5

Refer to the exhibit. The following commands are executed on interface fa0/1 of 2950 Switch.

```
2950Switch(config-if)# switchport port-security
2950Switch(config-if)# switchport port-security mac-address sticky
2950Switch(config-if)# switchport port-security maximum 1
```

The Ethernet frame that is shown arrives on interface fa0/1.
What two functions will occur when this frame is received by 2950Switch? (Choose two.)

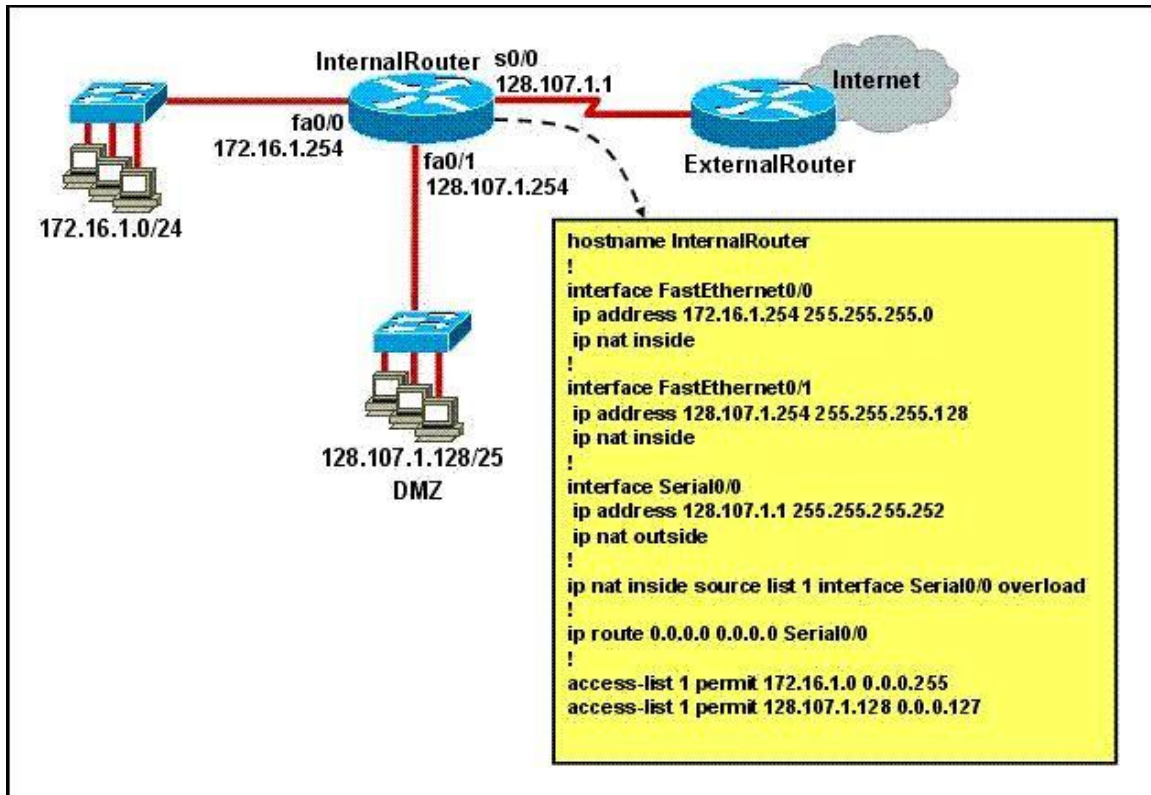


- A. The MAC address table will now have an additional entry of fa0/1 FFFF.FFFF.FFFF.
- B. Only host A will be allowed to transmit frames on fa0/1.
- C. This frame will be discarded when it is received by 2950Switch.
- D. All frames arriving on 2950Switch with a destination of 0000.00aa.aaaa will be forwarded out fa0/1.
- E. Hosts B and C may forward frames out fa0/1 but frames arriving from other switches will not be forwarded out fa0/1.
- F. Only frames from source 0000.00bb.bbbb, the first learned MAC address of 2950Switch, will be forwarded out fa0/1.

Answer: BD

QUESTION 6

Refer to the exhibit. A junior network engineer has prepared the exhibited configuration file. What two statements are true of the planned configuration for interface fa0/1? (Choose two.)

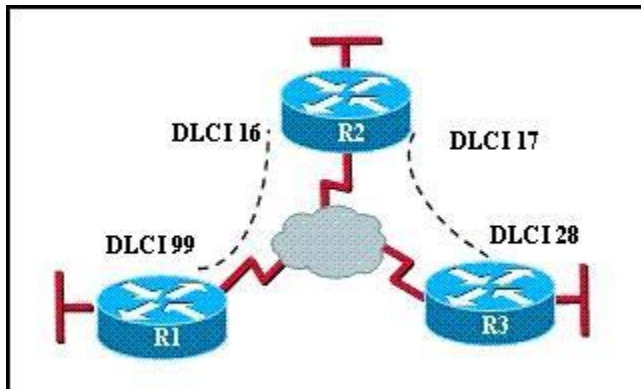


- A. The two FastEthernet interfaces will require NAT configured on two outside serial interfaces.
- B. Address translation on fa0/1 is not required for DMZ Devices to access the Internet.
- C. The fa0/1 IP address overlaps with the space used by s0/0.
- D. The fa0/1 IP address is invalid for the IP subnet on which it resides.
- E. Internet hosts may not initiate connections to DMZ Devices through the configuration that is shown.

Answer: BE

QUESTION 7

Refer to the exhibit. Which statement describes DLCI 17?



- A. DLCI 17 describes the ISDN circuit between R2 and R3.

- B. DLCI 17 describes a PVC on R2. It cannot be used on R3 or R1.
- C. DLCI 17 is the Layer 2 address used by R2 to describe a PVC to R3.
- D. DLCI 17 describes the dial-up circuit from R2 and R3 to the service provider.

Answer: C

QUESTION 8

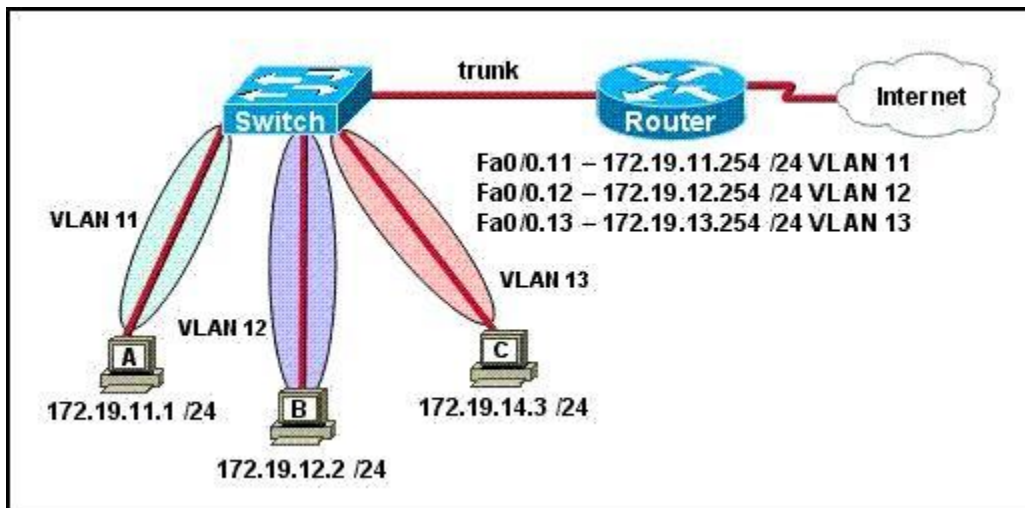
What is the default Local Management Interface frame type transmitted by a Cisco router on a Frame Relay circuit?

- A. Q933a
- B. B8ZS
- C. IETF
- D. Cisco
- E. ANSI

Answer: D

QUESTION 9

Refer to the exhibit. The network shown in the exhibit has just been installed. Host B can access the Internet, but it is unable to ping host C. What is the problem with this configuration?



- A. Host B should be in VLAN 13.
- B. The address of host C is incorrect.
- C. The gateway for host B is in a different subnet than the host is on.
- D. The switch port that sends VLAN 13 frames from the switch to the router is shut down.
- E. The switch port connected to the router is incorrectly configured as an access port.

Answer: B

QUESTION 10

Drag each feature of the left to the appropriate routing protocol on the right.

Drag each feature on the left to the appropriate routing protocol on the right.

faster convergence	
sends frequent updates	
less complex configuration	
susceptible to routing loops	
uses only event-triggered updates	
exchanges full routing table in updates	
same topology information held by all routers	
requires more memory and processing power	

RIP Version 1
OSPF

Answer:

Drag each feature on the left to the appropriate routing protocol on the right.

faster convergence	
sends frequent updates	
less complex configuration	
susceptible to routing loops	
uses only event-triggered updates	
exchanges full routing table in updates	
same topology information held by all routers	
requires more memory and processing power	

RIP Version 1
susceptible to routing loops
less complex configuration
sends frequent updates
exchanges full routing table in updates
OSPF
requires more memory and processing power
uses only event-triggered updates
same topology information held by all routers
faster convergence

QUESTION 11

At which layer of the OSI model is RSTP used to prevent loops?

- A. physical
- B. data link
- C. network

D. transport

Answer: B

QUESTION 12

Lab - Access List Simulation

A network associate is adding security to the configuration of the Corp1 router. The user on host C should be able to use a web browser to access financial information from the Finance Web Server. No other hosts from the LAN nor the Core should be able to use a web browser to access this server. Since there are multiple resources for the corporation at this location including other resources on the Finance Web Server, all other traffic should be allowed.

The task is to create and apply an access-list with no more than three statements that will allow ONLY host C web access to the Finance Web Server. No other hosts will have web access to the Finance Web Server. All other traffic is permitted.

Access to the router CLI can be gained by clicking on the appropriate host.

All passwords have been temporarily set to "cisco".

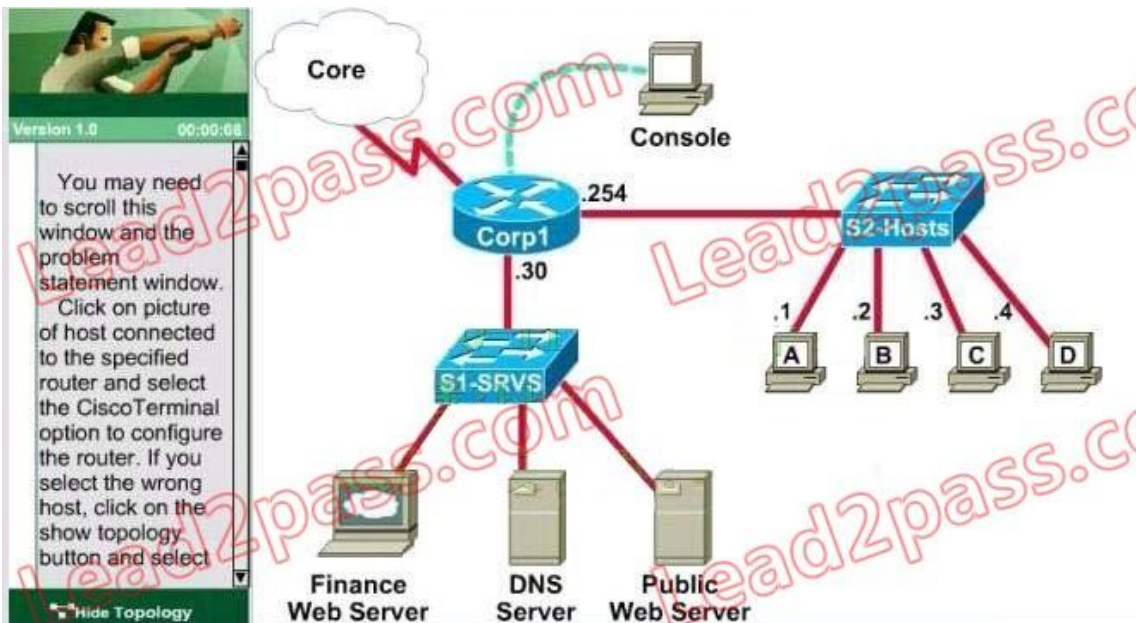
The Core connection uses an IP address of 198.18.196.65

The computers in the Hosts LAN have been assigned addresses of 192.168.33.1 - 192.168.33.254.

- o host A 192.168.33.1
- o host B 192.168.33.2
- o host C 192.168.33.3
- o host D 192.168.33.4

The servers in the Server LAN have been assigned addresses of 172.22.242.17 - 172.22.242.30

The Finance Web Server is assigned an IP address of 172.22.242.23



Answer:

PS: You can see the Comprehensive Question Description & Topology and Answer & Explanation From Full Version.

QUESTION 13

Lab - CLI Configuration

Instructions

To configure the router (**Gotha**) click on the console host icon that is connected to a router by a serial console cable (shown in the diagram as a dashed black line).

You can click on the buttons below to view the different windows.

Each of the windows can be minimized by clicking on the [-]. You can also reposition a window by dragging it by the title bar.

The "Tab" key and most commands that use the "Control" or "Escape" keys are not supported and are not necessary to complete this simulation. The **help** command does not display all commands of the help system.

Scenario

Central Florida Widgets recently installed a new router in their Gotha office. Complete the network installation by performing the initial router configurations and configuring RIPv2 routing using the router command line interface (CLI) on the Gotha router.

Configure the router per the following requirements:

Name of the router is **Gotha**

Enable-secret password is **mi222ke**

The password to access user EXEC mode using the console is **G8tors1**

The password to allow telnet access to the router is **dun63lap**

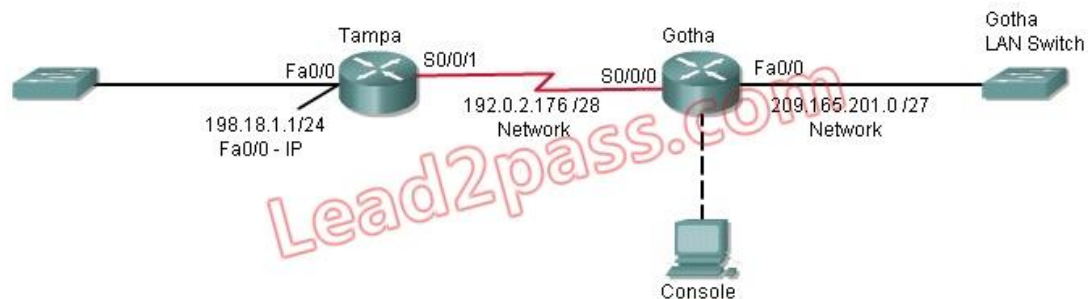
IPv4 addresses must be configured as follows:

Ethernet network **209.165.201.0 /27** - router has **fourth** assignable host address in subnet.

Serial network is **192.0.2.176 /28** - router has **last** assignable host address in the subnet.

Interfaces should be enabled.

Routing protocol is **RIPv2**.



Answer:

PS: You can see the Comprehensive Question Description & Topology and Answer & Explanation From Full Version.

QUESTION 14

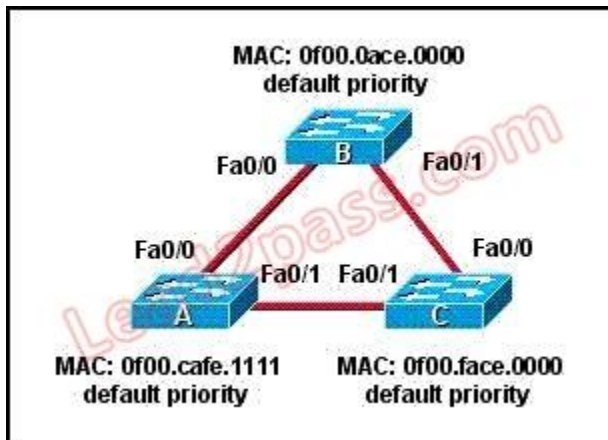
What are two characteristics of a switch that is configured as a VTP client? (Choose two.)

- A. If a switch that is configured to operate in client mode cannot access a VTP server, then the switch reverts to transparent mode.
- B. On switches that are configured to operate in client mode, VLANs can be created, deleted, or renamed locally.
- C. The local VLAN configuration is updated only when an update that has a higher configuration revision number is received.
- D. VTP advertisements are not forwarded to neighboring switches that are configured in VTP transparent mode.
- E. VTP client is the default VTP mode.
- F. When switches in VTP client mode are rebooted, they send a VTP advertisement request to the VTP servers.

Answer: CF

QUESTION 15

Refer to the topology shown in the exhibit. Which ports will be STP designated ports if all the links are operating at the same bandwidth? (Choose three.)



- A. Switch A - Fa0/0
- B. Switch A - Fa0/1
- C. Switch B - Fa0/0
- D. Switch B - Fa0/1
- E. Switch C - Fa0/0
- F. Switch C - Fa0/1

Answer: BCD