



**Vendor:** HP

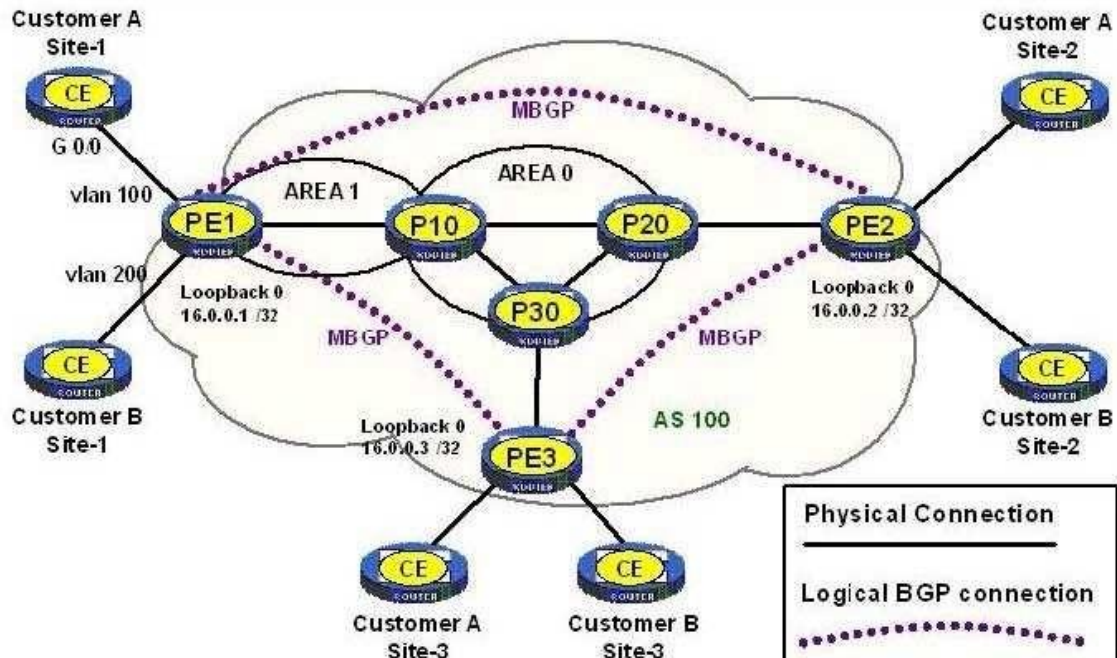
**Exam Code:** HP0-Y36

**Exam Name:** Deploying HP Enterprise Networks

**Version:** DEMO

### QUESTION 1

Click the Exhibit button.



A provider of MPLS services configures MPLS Layer-3 VPN services for two customers. Each customer has three branch offices that will be interconnected. The address blocks chosen by the customers for each site are:

Customer	Site-1	Site-2	Site-3
A	10.1.0.0 /16	10.2.0.0 /16	10.3.0.0 /16
B	10.1.0.0 /16	10.2.0.0 /16	10.3.0.0 /16

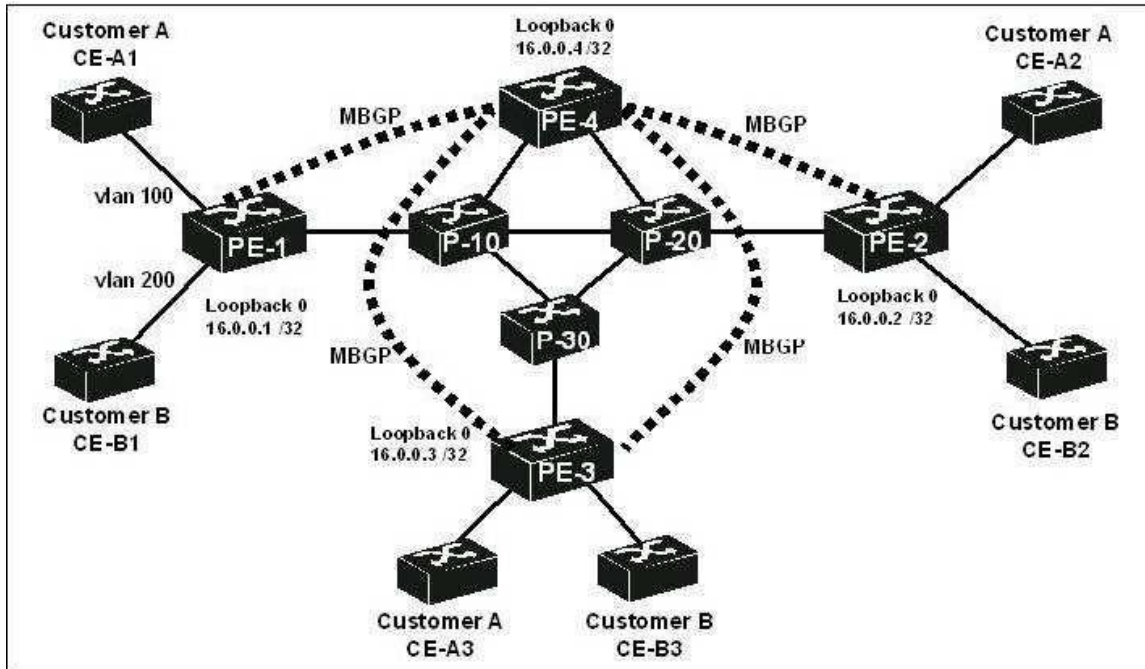
The provider uses OSPF as its IGP with the Loopback 0 addresses shown as the OSPF router-id and the MPLS LSR-ID. Customer A Site 1 successfully pings Customer A Site 2. This ICMP echo request is captured on the Ethernet segment between routers P-10 and P-20. What is found on this packet capture? (Select two.)

- A. MPLS VPN label
- B. VPN target
- C. MPLS outer label corresponding to the LSR-ID of P-20
- D. MPLS outer label corresponding to FEC 16.0.0.2
- E. route distinguisher

**Answer:** AD

### QUESTION 2

Click the Exhibit button.



A provider of MPLS services configures MPLS Layer-3 VPN services for two customers. Each customer has three branch offices that will be interconnected. The address blocks chosen by the customers for each site are:

Customer	VPN-instance	Site-1	Site-2	Site-3
A	Cust-A	10.1.0.0 /16	10.2.0.0 /16	10.3.0.0 /16
B	Cust-B	10.1.0.0 /16	10.2.0.0 /16	10.3.0.0 /16

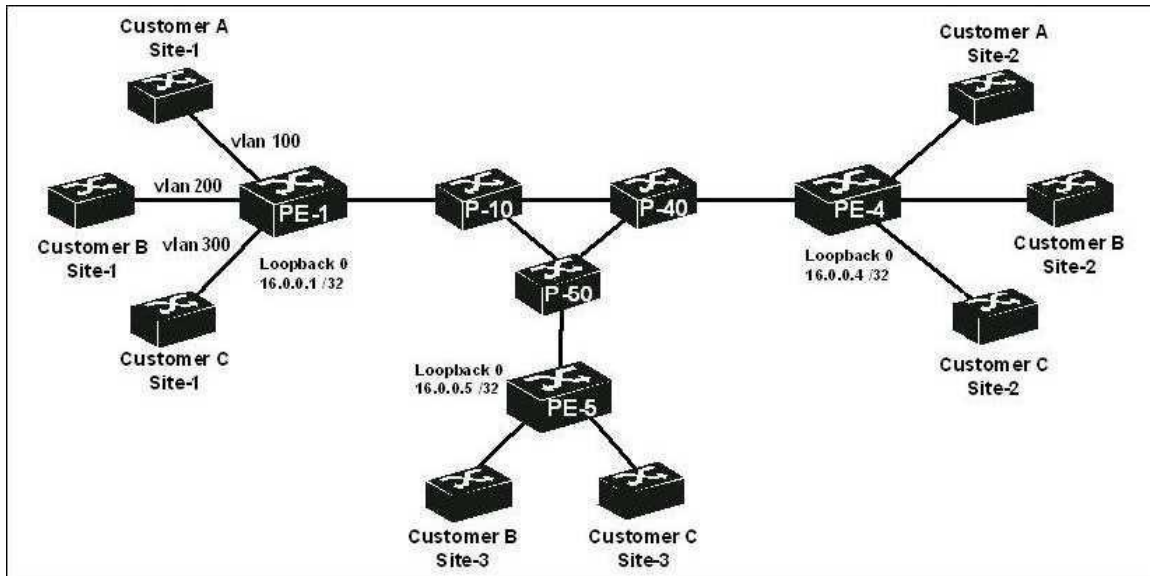
The provider has established only four Multi-Protocol BGP peers as shown in the exhibit. PE-4 has no customer connections. Neither MPLS L3VPN is functional. Which configuration steps are required if this topology is to be operational for both customers.? (Select two.)

- A. Create VPN instances Customer A and Customer B on PE-4.
- B. Configure PE-4 as a route-reflector within the bgp l3vpn-family.
- C. Configure PE-4 as a route-reflector within the ipv4-family vpnv4.
- D. Configure PE-4 as a route-reflector within the ipv4-family vpn-instance Cust-A and vpn-instance Customer B.
- E. Configure PE-4 as a bgp route-reflector.
- F. Configure MBGP peers for P-10, P-20, and P-30.

**Answer:** AC

### QUESTION 3

Click the Exhibit button.



A provider of MPLS services offers multiple types of MPLS-based VPNs to its customers. Provider Edge router PE-1 directly connects to the following three customers:

Customer	MPLS service	Number of Sites
A	MPLS L2VPN Martini mode	2
B	VPLS - Kompella mode	3
C	MPLS L3VPN	3

What is the minimum number of LDP peers established on Router PE-1?

- A. 1
- B. 2
- C. 3
- D. 4
- E. 5

**Answer: B**

#### QUESTION 4

Which technology in an MPLS L2VPN can provide ordered delivery of Ethernet frames?

- A. TCP-based L2VPN
- B. Control Word
- C. Ethernet raw access circuit
- D. VLAN pseudowire class
- E. MPLS EXP bits

**Answer: B**

#### QUESTION 5

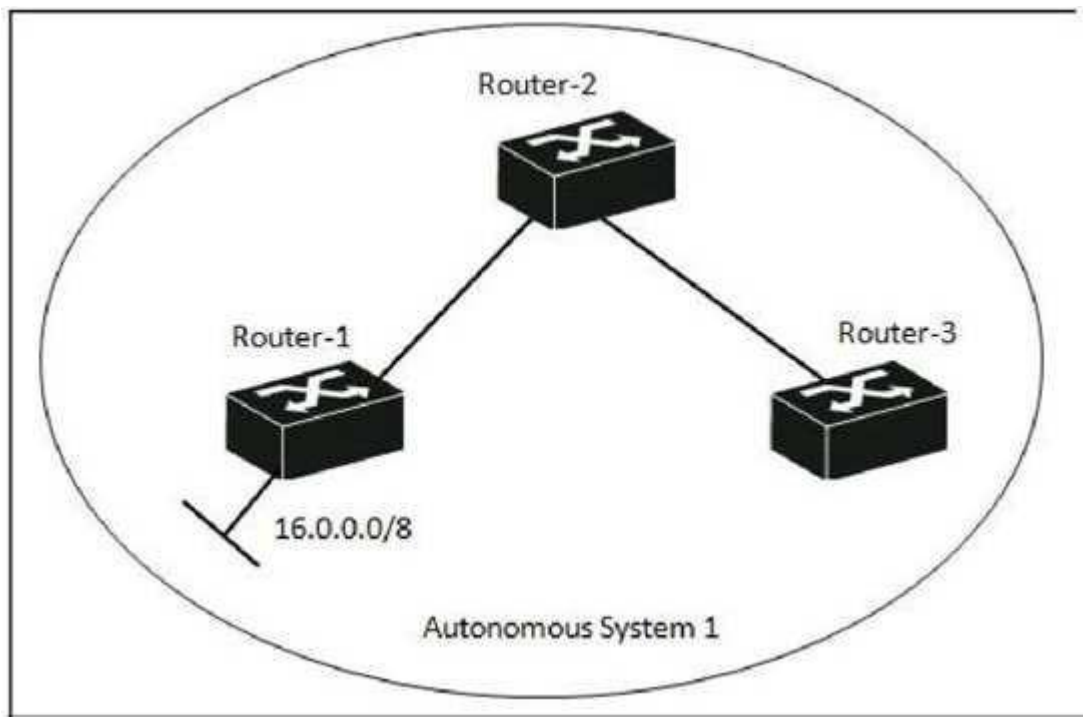
Which BGP attributes must be present in a BGP routing update? (Select three.)

- A. community
- B. MED
- C. origin type
- D. local preference
- E. AS path
- F. next hop

**Answer:** CEF

#### QUESTION 6

Click the Exhibit button.



Router-1 and Router-2 are BGP peers. Router-2 and Router-3 are BGP peers. However, Router-3 has not learned the 16.0.0.0/8 BGP route. How can you resolve this issue? (Select two.)

- A. Enable IGP synchronization on all routers.
- B. Prepend AS1 to the 16.0.0.0/8 route on Router-1.
- C. Enable BGP peering between Router-1 and Router-3.
- D. Adjust the local preference of 16.0.0.0/8 on Router-1.
- E. Configure Router-2 as a route reflector and Router-1 and Router-3 as clients.
- F. Establish a physical link between Router-1 and Router-3.

**Answer:** CE

#### QUESTION 7

What can be included in BGP or multi-protocol BGP Network Layer Reachability Information

(NLRI)? (Select three.)

- A. AS 65001
- B. 10.0.0.0 /9
- C. MED
- D. Remote LDP Session
- E. BGP ORF
- F. VPN Target
- G. VPLS Label Block
- H. 6500:301:192.168.0.0 /16

**Answer:** BGH

#### **QUESTION 8**

Which characteristics of a Circuit Cross Connect (CCC) L2VPN distinguish it from the Martini or Kompella versions? (Select two.)

- A. It requires a stack of three MPLS labels.
- B. It includes exactly two endpoints of the VPN.
- C. It can operate with fewer than two MPLS labels.
- D. It does not require any Label signaling.

**Answer:** CD

## Thank You for Trying Our Product

### Braindump2go Certification Exam Features:

- ★ More than **99,900** Satisfied Customers Worldwide.
- ★ Average **99.9%** Success Rate.
- ★ **Free Update** to match latest and real exam scenarios.
- ★ **Instant Download** Access! No Setup required.
- ★ Questions & Answers are downloadable in **PDF** format and **VCE** test engine format.
- ★ Multi-Platform capabilities - **Windows, Laptop, Mac, Android, iPhone, iPod, iPad**.
- ★ **100%** Guaranteed Success or **100%** Money Back Guarantee.
- ★ **Fast**, helpful support **24x7**.



View list of all certification exams: <http://www.braindump2go.com/all-products.html>



Microsoft



ORACLE



CITRIX



JUNIPER  
NETWORKS



EMC<sup>2</sup>  
where information lives<sup>®</sup>

**10% Discount Coupon Code: BDN2014**