



Vendor: Oracle

Exam Code: 1Z0-567

Exam Name: Primavera P6 Enterprise Project Portfolio
Management 8 Essentials

Version: DEMO

QUESTION 1

Calculated project user-defined fields _____ and _____.

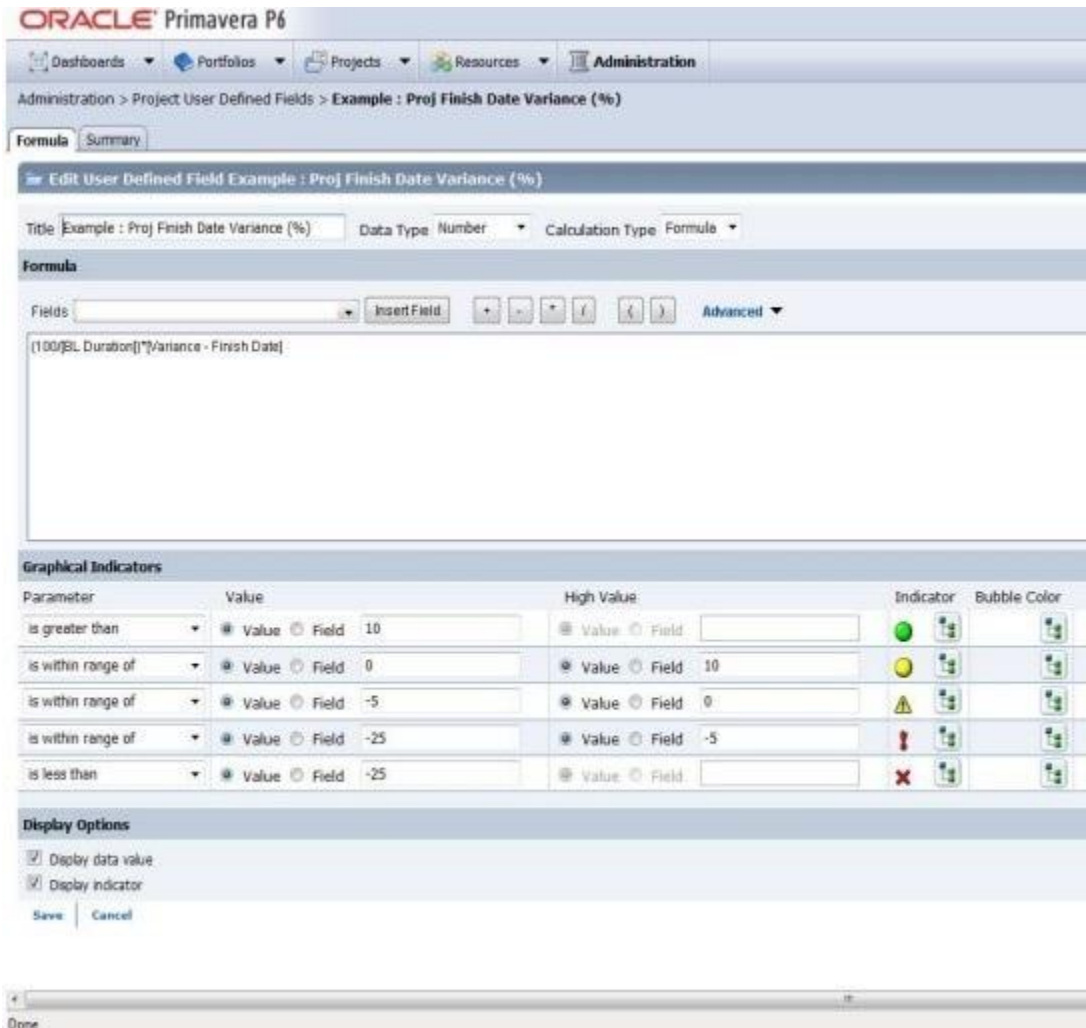
- A. are created by system administrators
- B. are managed by Configuration Management
- C. are associated with formulas
- D. are viewable in either the web interface or client
- E. are defined in the web interface and only viewable in the web interface

Answer: CE

Explanation:

C: The Oracle Primavera EPPM Web Access product contains a functionality where by users can create their own calculated values and dashboard indicators for monitoring project KPI's. This is achieved by creating Project Calculated User Defined Fields. The formulas which can be populated in these fields is similar to a formula used in some spreadsheet applications e.g. Microsoft Excel.

Providing a simple and effective platform for creating all manner of organisation bespoke project indicators.



Note: User-defined fields enable you to customize fields and values and add them to the project

database.

QUESTION 2

Select the true statement regarding currencies.

- A. Only one base currency is supported per database.
- B. Currencies are updated daily per exchange rates.
- C. Only 10 currencies are supported in Primavera.
- D. Only two currencies are supported in Primavera.

Answer: A

Explanation:

The base currency is the monetary unit used to store cost data for all projects in the database and is controlled by a global administrative setting in the Project Management module. The default base currency for Primavera is US dollars (\$). The view currency is the monetary unit used to display cost data in Primavera and is controlled by a user preference.

Note: All costs are stored in the Based Currency. All costs are stored in the Base Currency and all other Currencies are calculated values using the Base Currency value and conversion rate.

QUESTION 3

Identify three best practice uses of Notebook topics.

- A. To document processes
- B. To explain a constraint
- C. To send out an email alert
- D. To explain baseline update
- E. To change user access
- F. To update actual costs
- G. To provide status information

Answer: ABG

Explanation:

A, G: The Project Notebooks portlet is where all the project level notebook topics are shown in one location. This is especially helpful if your business process is consistently used to show reasons for delays, reasons for change orders, or other significant project communications.

B: Primavera has functions, including Notebook, that enables you to note information associated with an activity, including the reasons associated for establishing a constraint.

Note:

* Notebook topics are predefined categories in P6 that help to organize your project notes.

* The notebook topics in Primavera P6 provide team members with a history of all that happened in the project, whether it was a schedule delay due to rain or the breakdown of equipment.

* Notebooks exist not only for Projects, but also can be added to any EPS, WBS, or activity. So, for example, you could create a notebook that describes the purposes and objectives of each WBS element. These notebooks could then be gathered together in a report, which outlines the project by WBS, using the notebooks as summary paragraphs.

QUESTION 4

You are an application administrator that has been asked to create a portfolio for an executive. You create the portfolio and have the user test to see whether it meets requirements. However there are a couple of projects that are missing. You look for the portfolio, but it is no longer visible to you. What is the cause of this problem?

- A. The global filters for the portfolio must be refreshed.
- B. You do not have read/write access to the portfolio.
- C. You created it for one user, and you are not that user.
- D. The projects were deleted in error.

Answer: C

QUESTION 5

You received an e-mail from a portfolio manager asking you to check performance metrics for the past months on each of the projects filtered for that portfolio.

You cannot locate the portfolio that the email references.

What is the probable cause?

- A. It is a user portfolio created by the portfolio manager.
- B. It is a user-filtered portfolio that has not been refreshed.
- C. You do not have the appropriate license for the web interface.
- D. You have not been assigned as a resource to the projects.

Answer: B

QUESTION 6

Identify the best definition of the EPS.

- A. The hierarchical definition of project budgets and actual costs.
- B. The hierarchical definition of reporting structures.
- C. The hierarchical structure of the security for projects.
- D. The hierarchical structure of the database of projects.

Answer: D

Explanation:

Enterprise Project Structure (EPS)

The EPS is the outsider's view of your company, showing your lines of business. The EPS is laid out in a tree structure.

The EPS is used to organize and manage the projects in your organization. Your database of projects is arranged in a hierarchy called the enterprise project structure (EPS).

QUESTION 7

Identify the true statement regarding user-interface views.

- A. Deleting a user-interface view that has assigned users could cause user issues.
- B. Each user may be assigned to multiple user-interface views.
- C. User-interface views overwrite project and global security profiles.
- D. User-interface views are created and managed by individual users.

Answer: B

Explanation:

A user interface view is a customized view of the Dashboards, Portfolios, Projects, and Resources sections of P6 Web Access typically associated with a role.

QUESTION 8

You are an implementation consultant working at a company where project schedules have been managed primarily with Microsoft Project, on individual desktops. The "projects" theoretically have been multiple-year projects. Your scope of work includes migrating project data from legacy project plans and setting up project planning standards. As you look into the current Microsoft Project plans, it becomes clear that the projects are not really multi-year projects. The plans have been managed by creating "new" projects within the old projects by skipping a few lines in what has become more of a program history.

What approach would you recommend to retain the legacy data (which is a mandated requirement in the new Primavera system), while moving forward with a "one project, one plan" process?

- A. Import all MS Project plans directly into the P6 production database "as is."
- B. Import MS Project plans but break out current in-flight work into separate projects.
- C. Create new projects only for in flight work identified in MS Project plans.
- D. Retire legacy project plans and start with new project planning standards.

Answer: B

QUESTION 9

You are an implementation consultant responding to the requirement that a cost account structure be set up in Primavera to be able to receive actual costs incurred by each contributing organization. There is also a cost account structure set up in the customer's financial management system (FMS).

What would be the easiest long-term recommendation for setup and maintenance of the cost account structure?

- A. Set up a cost account structure in Primavera that mirrors the FMS, and manually manage changes.
- B. Set up a cost account structure in Primavera and a global project code to map to FMS for Integration.
- C. Do not set up the cost account structure, and receive costed actuals only from the FMS.
- D. Set up integration between Primavera and the FMS to maintain all ongoing costing data.

Answer: C

Explanation:

It refers to the existence, in the structure, to the cost account structure for FMS. Integrate Primavera P6 EPPM with the Financial Management system.

QUESTION 10

You are in a governance organization that has established a project management methodology with work product and document requirements that must be included in every project. You are doing an audit prior to a gate review for a specific project. You are fairly certain that the project manager and project are in compliance with these requirements, but you cannot see the required work products and documents in the project workspace. How can you solve this problem?

- A. Go to Activities and search for the Work Products and Documents by using an Activity view.
- B. Go to a dashboard and look for the Work Products and Documents in a portlet.
- C. Create a global activity code for required Work Products and Documents to call out activities.
- D. Go to the Project section and click Work Products and Documents to view the portlet.

Answer: D

Thank You for Trying Our Product

Braindump2go Certification Exam Features:

- ★ More than **99,900** Satisfied Customers Worldwide.
- ★ Average **99.9%** Success Rate.
- ★ **Free Update** to match latest and real exam scenarios.
- ★ **Instant Download** Access! No Setup required.
- ★ Questions & Answers are downloadable in **PDF** format and **VCE** test engine format.
- ★ Multi-Platform capabilities - **Windows, Laptop, Mac, Android, iPhone, iPod, iPad.**
- ★ **100%** Guaranteed Success or **100%** Money Back Guarantee.
- ★ **Fast**, helpful support **24x7.**



View list of all certification exams: <http://www.braindump2go.com/all-products.html>



Microsoft



ORACLE



CITRIX



JUNIPER
NETWORKS



EMC²
where information lives[®]

10% Discount Coupon Code: BDNT2014