



Vendor: Microsoft

Exam Code: 70-336

Exam Name: Microsoft Core Solutions of Microsoft Lync
Server 2013

Version: DEMO

Case Study: 1 - Contoso Ltd (QUESTION 45 - QUESTION 54)

Case Study: 2 - Margie's Travel (QUESTION 55 - QUESTION 63)

Case Study: 3 - Litware, Inc (QUESTION 64 - QUESTION 74)

Case Study: 4 - Litware, Inc Case B (QUESTION 75 - QUESTION 85)

Case Study: 5 - Contoso Ltd. Case B (QUESTION 86 - QUESTION 97)

QUESTION 1

You have a Lync Server 2013 infrastructure that contains an Enterprise Edition front end pool. You plan to add the following server roles to the existing infrastructure:

- Edge Server
- Archiving Server
- Monitoring Server
- Persistent Chat Server

You need to identify the minimum number of Microsoft SQL Server servers that must be added to the existing Lync Server 2013 infrastructure. The solution must not use the existing SQL Server Back End Server. What is the minimum number of SQL Server servers that you should identify?

- A. 1
- B. 2
- C. 3
- D. 4

Answer: A

Explanation:

<http://technet.microsoft.com/en-us/library/gg398102.aspx>

"You need to identify the minimum number of Microsoft SQL Server Servers that must be added to the existing Lync Server 2013 Infrastructure. The solution MUST NOT use the existing SQL Server Back End Server. "

We CANNOT use the existing Back End SQL Server

Persistent Chat on its own SQL Server

Edge Server DOES NOT require a SQL Server, it installs SQL Express Edition for local CMS

Monitoring and Archiving can be collocate onto the same SQL Server that is used by the

Persistent Chat Server

The conclusion and the answer is:

The Minimum Number of Microsoft SQL Server Servers is: 1

QUESTION 2

Your company has a main office and a branch office. The main office is located in Amsterdam. The branch office is located in New York. Each office has a data center. The offices connect to each other by using a high-bandwidth, low-latency WAN link. You have a Lync Server 2013 infrastructure that contains 5,000 users. You plan to deploy a persistent chat infrastructure. You need to ensure that persistent chat rooms remain available if a Persistent Chat Server fails. What should you do?

- A. Create one Persistent Chat Server pool that contains two active chat servers.
- B. Create two Persistent Chat Server pools that each contains one active chat server and one standby chat server.
- C. Create two Persistent Chat Server pools that each contains one active chat server.

D. Create one Persistent Chat Server pool that contains one active chat server and one standby chat server.

Answer: A

Explanation:

<http://technet.microsoft.com/en-us/library/gg398500.aspx>

QUESTION 3

Hotspot Question

You plan to deploy a Lync Server 2013 infrastructure that will contain the components shown in the following table.

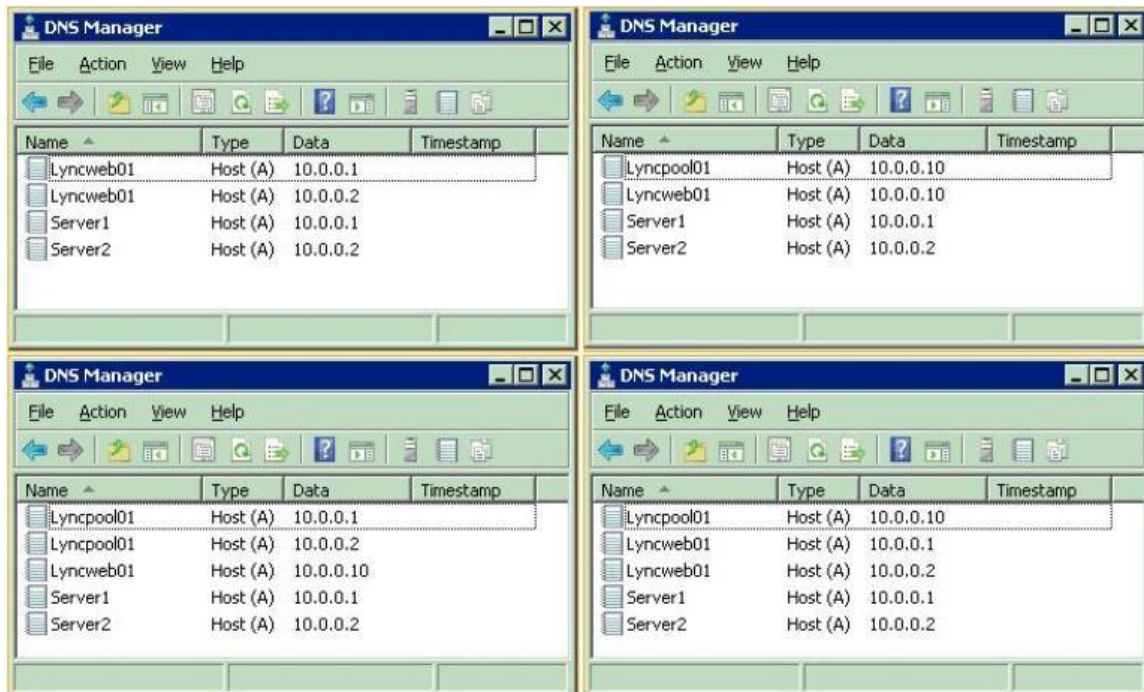
| Component name | Description | IP address |
|----------------|--|------------|
| Server1 | Enterprise Edition Front End Server | 10.0.0.1 |
| Server2 | Enterprise Edition Front End Server | 10.0.0.2 |
| HLB VIP | Virtual IP address of a hardware load balancer | 10.0.0.10 |

The fully qualified domain name (FQDN) of the Enterprise Edition pool will be lyncpool01.contoso.com. Lync web services will be accessed at a URL of https://lyncweb01.contoso.com.

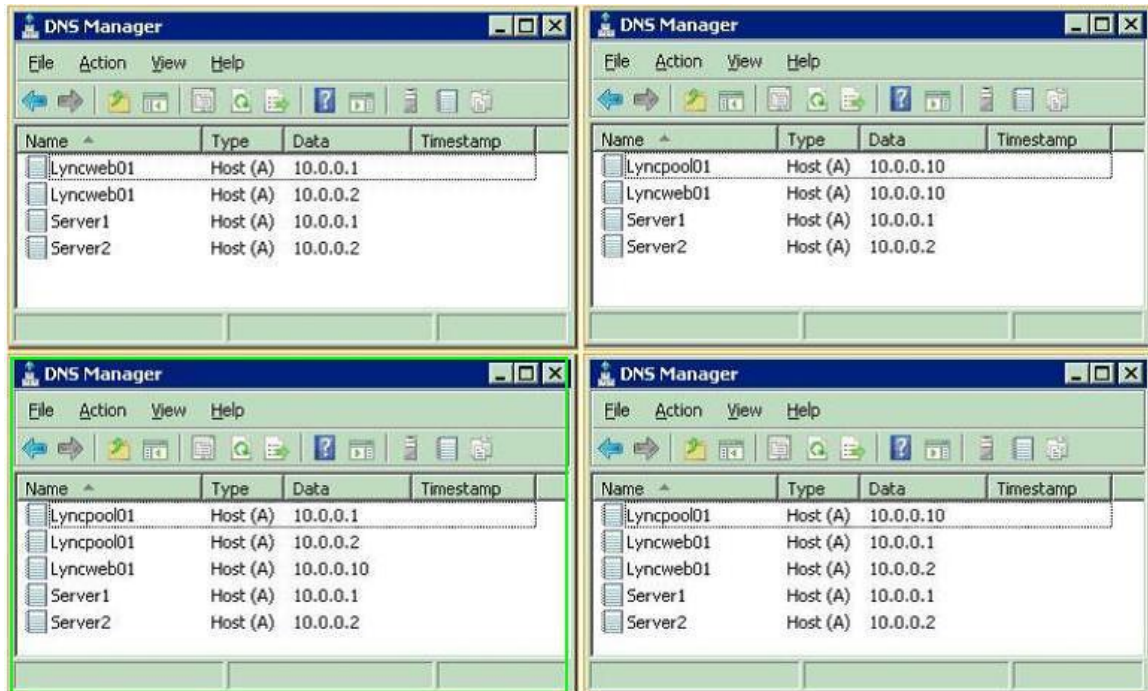
You plan to use DNS load balancing for the Enterprise Edition pool.

You need to identify which host (A) records must be created on the internal DNS servers to support the planned Lync Server 2013 deployment.

Which A record entries should you identify? To answer, select the appropriate records in the answer area.



Answer:



QUESTION 4

You plan to deploy Lync Server 2013. Your company uses only certificates that are purchased from a third-party certification authority (CA). The company uses the following domain names to generate email addresses for users:

- Adatum.com
- Contoso.com
- Fabrikam.com
- Wingtiptoys.com

You plan to configure simple URLs for the planned deployment. You need to recommend which meeting URLs to use. The solution must minimize the cost of purchasing certificates. Which names should you include in the recommendation?

- A. <https://meet.contoso.com>
<https://meet.adatum.com>
<https://meet.wingtiptoys.com>
<https://meet.fabrikam.com>
- B. <https://meet.contoso.com>
<https://meet.contoso.com/adatum.com>
<https://meet.contoso.com/fabrikam.com>
<https://meet.contoso.com/wingtiptoys.com>
- C. <https://meet.contoso.com/contoso.com>
https://meet.contoso.com/*.com
- D. <https://meet.contoso.com/contoso.com>
<https://meet.contoso.com/adatum.com>
<https://meet.contoso.com/fabrikam.com>
<https://meet.contoso.com/wingtiptoys.com>

Answer: A

Explanation:

<http://technet.microsoft.com/en-us/library/gg398287.aspx>

QUESTION 5

Drag and Drop Question

You have a Lync Server 2013 infrastructure.

You plan to provide remote users with the ability to establish the following:

- Peer-to-peer calls between themselves and users on the internal network
- Chat sessions from mobile devices

You need to recommend which components must be configured to provide the required access to the remote users. Which components should you recommend? To answer, drag the appropriate component to the correct requirement in the answer area. Each component may be used once, more than once, or not at all. Additionally, you may need to drag the split bar between panes or scroll to view content.

Answer:

QUESTION 6

Drag and Drop Question

You deploy a Lync Server 2013 infrastructure that contains an Edge Server named Server1.

Server1 is configured as shown in the following table.

| FQDN | Component | IP address |
|-----------------|-------------------------------|-------------|
| Sip.contoso.com | Access Edge service | 131.107.1.1 |
| Wc.contoso.com | Web Conferencing Edge service | 131.107.1.2 |
| Av.contoso.com | A/V Edge service | 131.107.1.3 |

You plan to configure federation with your company's external partners. You need to identify which ports must be allowed on the firewall to provide the instant messaging (IM), presence, and web conferencing features.

Which ports should you identify?

To answer, drag the appropriate ports to the correct location in the answer area. Each port may be used once, more than once, or not at all. Additionally, you may need to drag the split bar between panes or scroll to view content.

| Ports | Answer Area | |
|-------|-----------------|---------------|
| 80 | Destination | Ports to open |
| 443 | Sip.contoso.com | Port Port |
| 444 | Wc.contoso.com | Port |
| 3478 | | |
| 5060 | | |
| 5061 | | |

Answer:

| Ports | Answer Area | |
|-------|-----------------|---------------|
| 80 | Destination | Ports to open |
| 443 | Sip.contoso.com | 443 5061 |
| 444 | Wc.contoso.com | 443 |
| 3478 | | |
| 5060 | | |
| 5061 | | |

QUESTION 7

You plan to deploy a Lync Server 2013 infrastructure. You plan to use a Microsoft SQL Server database mirror that has a witness. A database administrator gives you a list of five servers that you can use for the deployment. The servers are configured as shown in the following table.

| Server name | SQL Server version |
|-------------|-------------------------------|
| SQL1 | SQL Server 2008 Enterprise |
| SQL2 | SQL Server 2008 R2 Standard |
| SQL3 | SQL Server 2008 R2 Standard |
| SQL4 | SQL Server 2008 Enterprise |
| SQL5 | SQL Server 2008 R2 Enterprise |

You need to identify which servers you must use for the SQL Server backend. Which servers should you identify?

- A. SQL2 and SQL3 for the mirror
SQL5 for the witness
- B. SQL1 and SQL4 for the mirror
SQL5 for the witness
- C. SQL2 and SQL3 for the mirror
SQL4 for the witness
- D. SQL1 and SQL4 for the mirror
SQL2 for the witness

Answer: A

Explanation:

<http://technet.microsoft.com/en-us/library/gg398990.aspx>

QUESTION 8

You are planning a Lync Server 2013 deployment. You need to recommend which Lync Server 2013 components are required to meet the following requirements:

- Presence, chat, and multiparty video conferencing features must be provided.
- Quality of Experience (QoE) data and call detail recording (CDR) must be provided.
- Lync Server services must be provided to internal users only.
- Licensing costs must be minimized.

Which two components should you recommend? (Each correct answer presents part of the solution.

Choose two.)

- A. A Director pool
- B. A Standard Edition server
- C. An Enterprise Edition pool
- D. An Edge pool
- E. A Microsoft SQL Server database

Answer: BE

Explanation:

This question only requires internal features, ("Lync Server Services must be provided to internal users only") and Edge is not required for this.

Presence, Chat, and Multiparty Video Conferencing features must be provided. Quality of Experience (QoE) Data and Call Detail Recording (CDR) must be provided.

Lync Server Services must be provided to Internal Users only.
Licensing Costs must be minimized.

QUESTION 9

You have a Lync Server 2013 infrastructure.
Your company has a sales department and a research department.
You deploy persistent chat.
You need to configure persistent chat to meet the following requirements:

- Users in the sales department must be prevented from viewing the names of the rooms used by the research department.
- Users in the research department must be able to discover all of the rooms used by their department.

What should you do?

- A. Create a user-level Persistent Chat Policy named Sales.
Apply the Sales policy to the sales and research users.
Create persistent chat rooms for each department and set the privacy to Secret.
- B. Create a category named ResearchRooms.
Add the research users as Allowed members to the ResearchRooms category.
Add the sales users as Denied members to the ResearchRooms category.
Create persistent chat rooms for each department and set the privacy to Closed.
- C. Create a category named ResearchRooms.
Add the research users as Allowed members to the ResearchRooms category.
Add the sales users as Denied members to the ResearchRooms category.
Create persistent chat rooms for each department and set the privacy to Secret.
- D. Create a user-level Persistent Chat Policy named Sales.
Apply the Sales policy to the sales and research users.
Create persistent chat rooms for each department and set the privacy to Open.

Answer: C

Explanation:

<http://technet.microsoft.com/en-us/library/jj204859.aspx>

<http://technet.microsoft.com/en-us/library/jj205166.aspx>

Thank You for Trying Our Product

Braindump2go Certification Exam Features:

- ★ More than **99,900** Satisfied Customers Worldwide.
- ★ Average **99.9%** Success Rate.
- ★ **Free Update** to match latest and real exam scenarios.
- ★ **Instant Download** Access! No Setup required.
- ★ Questions & Answers are downloadable in **PDF** format and **VCE** test engine format.
- ★ Multi-Platform capabilities - **Windows, Laptop, Mac, Android, iPhone, iPod, iPad.**
- ★ **100%** Guaranteed Success or **100%** Money Back Guarantee.
- ★ **Fast**, helpful support **24x7**.



View list of all certification exams: <http://www.braindump2go.com/all-products.html>



Microsoft



ORACLE



CITRIX



JUNIPER
NETWORKS



EMC²
where information lives[®]

10% Discount Coupon Code: BDNT2014