



Vendor: Microsoft

Exam Code: 77-891

Exam Name: MOS: Microsoft Office 365

Version: DEMO

QUESTION 1

Drag and Drop Question

You are the administrator for a company named Contoso, Ltd. Contoso has a subscription to Office 365 for midsize business and enterprises and has 200 Microsoft Lync Online users. Contoso works with a partner company named Fabrikam, Inc. All users at Fabrikam use Windows live. You need to implement desktop sharing between all of the Contoso users and all of the Fabrikam users, except for the users in the Contoso finance department. The Contoso users must be prevented from using Lync Online to communicate with any other external users. What should you do? To answer, move the appropriate actions from the list of actions to the answer area and arrange them in the correct order.

Actions	Answer Area
For each finance user, disable public IM connectivity.	
For each finance user, run the Set-MSOLUser cmdlet.	
From Windows PowerShell, create a new hosting provider.	
From the Lync Control Panel, enable public IM connectivity.	
Block domain federation with all domains except for those specified in the Lync Control Panel.	
Enable domain federation with all domains except for those specified in the Lync Control Panel.	

Answer:

Actions	Answer Area
	Block domain federation with all domains except for those specified in the Lync Control Panel.
	From the Lync Control Panel, enable public IM connectivity.
For each finance user, run the Set-MSOLUser cmdlet.	
From Windows PowerShell, create a new hosting provider.	
	For each finance user, disable public IM connectivity.
Enable domain federation with all domains except for those specified in the Lync Control Panel.	

Explanation:

<http://office365.pcpro.co.uk/tutorial/guide-office-365/168/configuring-lync-online>

<http://onlinehelp.microsoft.com/en-us/office365-enterprises/hh416767.aspx>

<http://onlinehelp.microsoft.com/en-us/office365-enterprises/hh416763.aspx>

<http://www.dummies.com/how-to/content/lync-online-management.html>

QUESTION 2

Your company has a main office and a branch office. Both offices are directly connected to the Internet. The branch office connection to the Internet has limited bandwidth. The company deploys Microsoft Lync Online. You need to ensure that users in the branch office can only use instant messaging (IM) while using Lync Online. The users must be prevented from connecting to audio or video conferences. What should you do?

- A. On the firewall at the branch office, block all of the outbound traffic on port 5061.
- B. From the Office 365 portal, modify the user properties of each user in the branch office.
- C. From the Office 365 portal, configure the license settings of each user in the branch office.
- D. Deploy only the Lync 2010 Attendee client to all of the users in the branch office.

Answer: B

Explanation:

<http://www.dummies.com/how-to/content/lync-online-management.html>

User information screen of Lync Online

The user information screen of Lync Online allows you to configure options and external access for individual users. In particular, you can enable or disable file transfers, audio and video, domain federation, and public Instant Messaging (IM) connectivity.

The screenshot shows the 'Edit user settings for Microsoft Lync Online' interface. At the top left is the 'Microsoft Online Services' logo. At the top right, it says 'Ken Withee My profile | Sign out' and 'Admin' with a help icon. The main heading is 'Edit user settings for Microsoft Lync Online'. Below this are two tabs: '1. Edit settings' (selected) and '2. Summary'. The user's name 'Amy Alberts' and email 'amy.alberts@portaldemo.onmicrosoft.com' are displayed. There are two sections: 'Options' and 'External access'. In the 'Options' section, both 'Enable file transfer' and 'Enable audio and video' are checked. In the 'External access' section, both 'Enable domain federation' and 'Enable public IM connectivity' are checked. At the bottom are 'Next' and 'Cancel' buttons.

QUESTION 3

Your company has 100 user mailboxes. The company purchases a subscription to Office 365 for professionals and small businesses. You need to enable the Litigation Hold feature for each mailbox.

What should you do first?

- A. Purchase a subscription to Office 365 for midsize business and enterprises.
- B. Enable audit logging for all of the mailboxes.
- C. Modify the default retention policy.
- D. Create a service request.

Answer: A

Explanation:

<http://blogs.technet.com/b/lystavlenn/archive/2011/09/23/office-365-comparing-p-and-e-plans.aspx>

<http://community.office365.com/en-us/w/exchange/exchange-online-faq.aspx>

QUESTION 4

Drag and Drop Question

Your company has an Office 365 subscription. The company updates the email security policy to include the following requirements:

- All email messages older than two years must be deleted automatically unless a user chooses to retain the message for a longer period.
- All email messages sent to and from a distribution group named Legal must be stored in a single mailbox for five years.
- All email messages sent to the Internet from the company must contain a disclaimer.

You need to configure Office 365 to meet the security policy requirements. Which features should you configure?

To answer, drag the appropriate feature to the correct requirement in the answer area.

Features	Answer Area
a journal rule	Feature All email messages older than two years must be deleted automatically unless a user chooses to retain the message for a longer period.
a litigation hold	Feature All email messages sent to and from a distribution group named Legal must be stored in a single mailbox for five years.
a retention policy	Feature All email messages sent to the Internet from the company must contain a disclaimer.
a transport rule	
delivery reports	

Answer:

Features	Answer Area
a litigation hold	a retention policy All email messages older than two years must be deleted automatically unless a user chooses to retain the message for a longer period.
	a journal rule All email messages sent to and from a distribution group named Legal must be stored in a single mailbox for five years.
delivery reports	a transport rule All email messages sent to the Internet from the company must contain a disclaimer.

QUESTION 5

Your company has an Office 365 subscription. You need to add the label "External" to the subject line of each email message received by your organization from an external sender. What should you do?

- From the Exchange Control Panel, add a MailTip.
- From the Forefront Online Protection Administration Center, set the footer for outbound email.
- Run the Enable-InboxRule cmdlet.
- From the Exchange Control Panel, run the New Rule wizard.

Answer: D

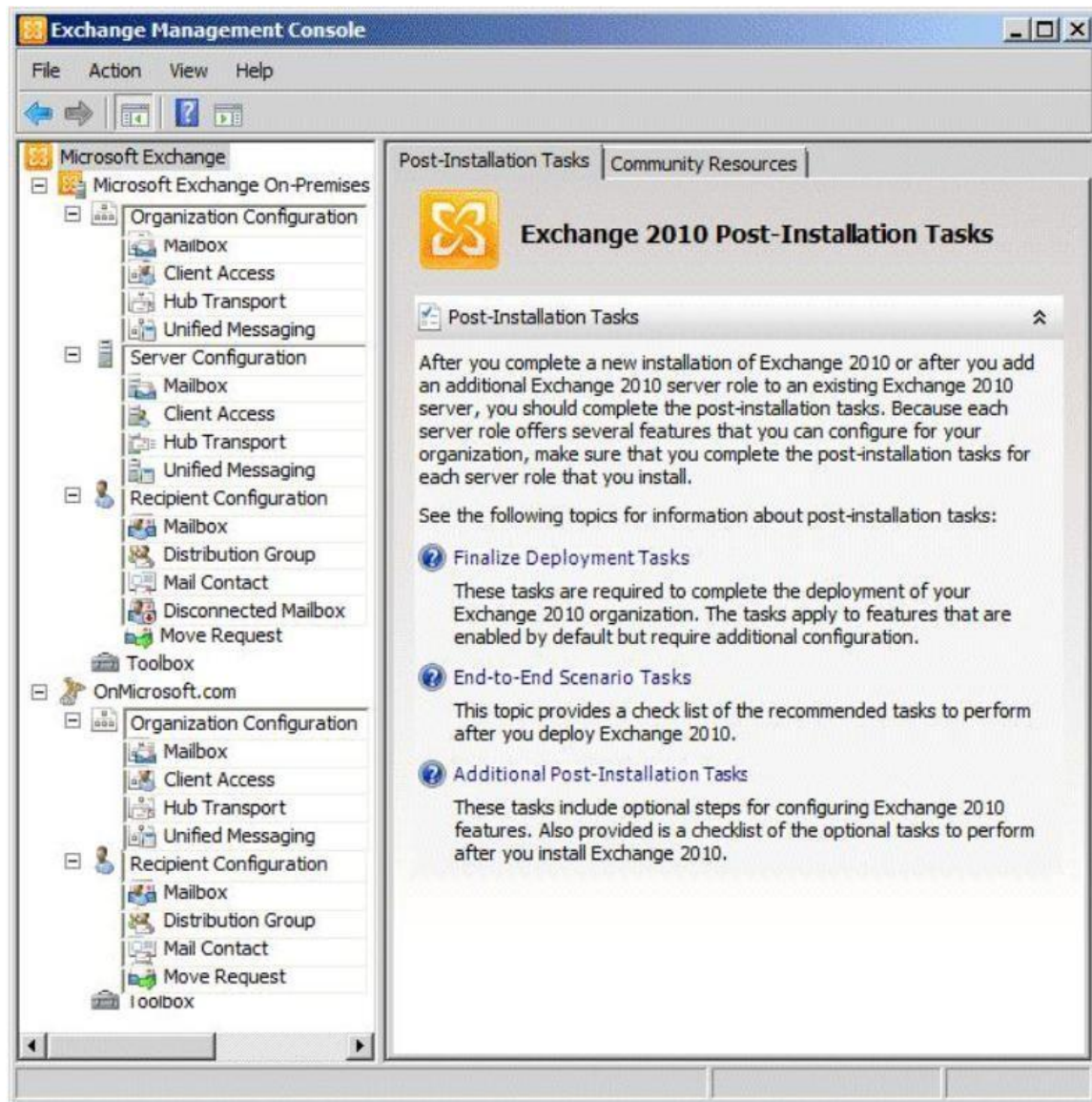
Explanation:

<http://help.outlook.com/en-us/140/ms.exch.ecp.newtransportrule.aspx>

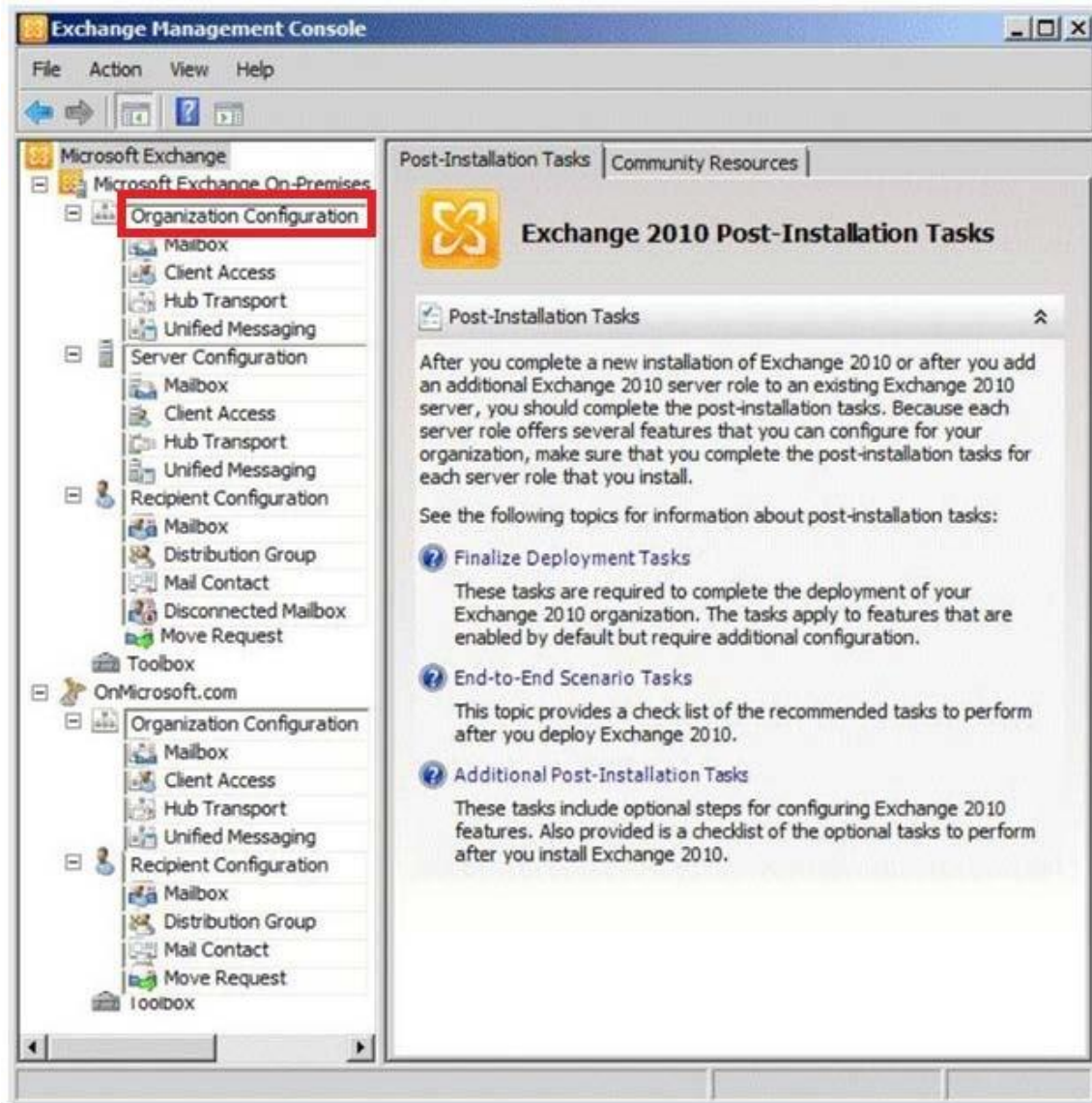
QUESTION 6

Hotspot Question

You are implementing a hybrid deployment of Office 365. You discover that users who have migrated to Office 365 cannot view the free/busy information of users who are hosted on the Microsoft Exchange Server on-premises environment. The Exchange on-premises users can view the free/busy information of all users. You need to ensure that the users who have Office 365 mailboxes can view the free/busy information of users who have Exchange on premises mailboxes. Which node should you modify from the Exchange Management Console? To answer, select the appropriate node in the answer area.



Answer:



Explanation:

Select "Organization Configuration" under "Microsoft Exchange On-Premises" Ref: <http://technet.microsoft.com/en-us/library/dd351260.aspx>

QUESTION 7

You are the administrator for a company named Tailspin Toys. The company uses the tailspintoys.com SMTP domain. All mailboxes are hosted on Office 365. From the Internet, customers send warranty questions to Tailspin Toys by sending an email message to a shared mailbox named Warranty. The Warranty mailbox has the warranty@tailspintoys.com SMTP address. The service manager reports that many email orders sent to warranty@tailspintoys.com are identified as spam. You need to ensure that all of the messages sent by the customers arrive in the Warranty mailbox. What should you do?

- A. From the Forefront Online Protection Administration Center, enable Directory-Based Edge Blocking.
- B. From the Forefront Online Protection Administration Center, create a new policy rule.
- C. From Windows PowerShell, run the New Transport Rule cmdlet and specify the – exceptif header contains

words parameter.

- D. From Windows PowerShell, run the Set-ContentFilterConfig cmdlet and specify the – by passed recipients parameter.

Answer: D

Explanation:

<http://technet.microsoft.com/en-us/library/aa996791.aspx>