



**Vendor:** HP

**Exam Code:** HP0-Y32

**Exam Name:** Designing & Troubleshooting Open Standards Networks

**Version:** DEMO

### QUESTION 1

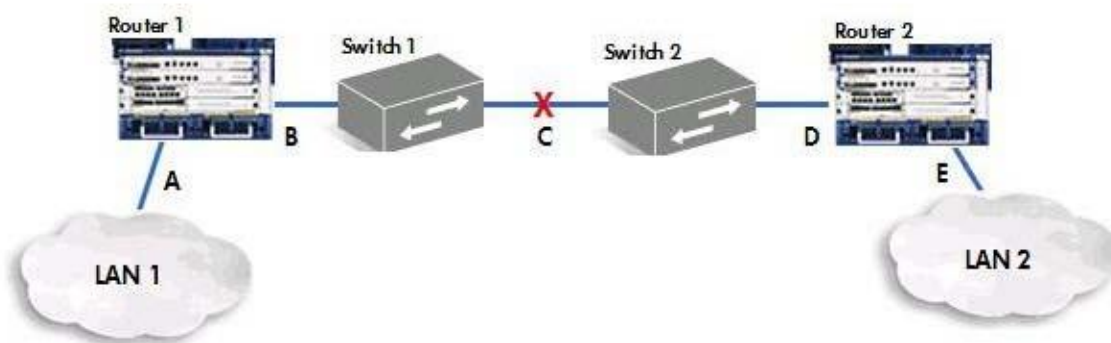
Users are reporting slow network and voice quality issues. You check the switch performance and determine that the uplink port is oversubscribed, but that the priority mechanisms should compensate. How do you check the priority settings on the network traffic? (Select two.)

- A. Check the configuration of the switches to ensure that priority fields are being mapped from the IP TOS/DSCP field.
- B. Check the 802.1p values of the untagged traffic to ensure they are properly prioritized.
- C. Check the 802.1p values in the 802.1q tags.
- D. Monitor the source and destination MAC addresses to ensure that they have a DSCP value of zero.

**Answer:** AC

### QUESTION 2

Click the Exhibit button. Link C experiences a failure. OSPF convergence time exceeds 40 seconds following the failure and following the restoration of the link. On an HP A8800 Series router, which changes improve convergence times? (Select three.)



- A. decreasing OSPF link costs on R1 Link B, and R2 Link D
- B. enabling Point to Point OSPF interfaces on R1 Link B, and R2 Link D
- C. increasing the bandwidth of Link C
- D. enabling BFD (Bidirectional Forwarding Detection) between Router 1 and Router 2
- E. decreasing Hello and Dead timers on R1 Link B and R2 Link D

**Answer:** BDE

### QUESTION 3

You are analyzing a packet capture for Voice-over-IP. The Layer 3 protocol is IPv4. The Layer 4 protocol is UDP and the Layer 5 protocol is Real Time Protocol. Your analysis indicates that the UDP packet has a header checksum of all zeros. Which statement about the UDP header checksum is correct?

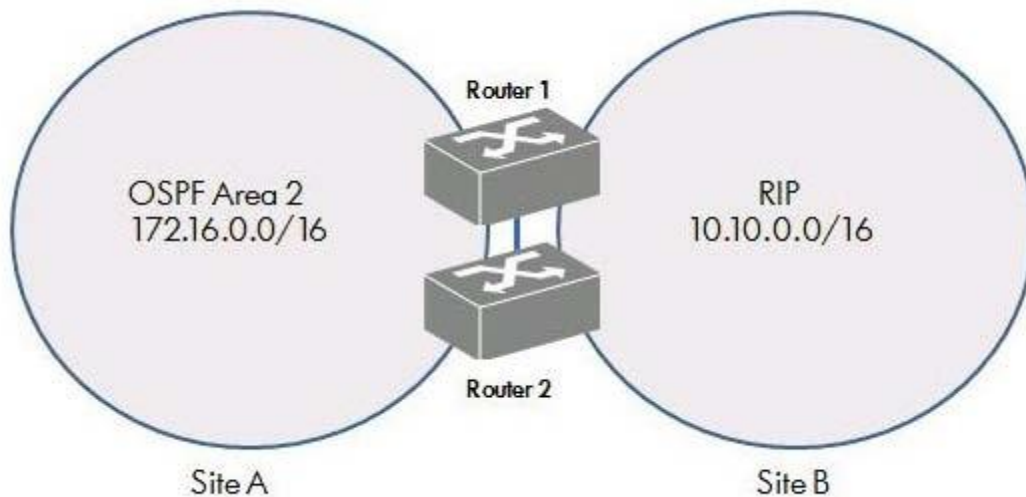
- A. An incorrect or missing checksum will cause dropped packets and explains the degraded voice problem.
- B. UDP often does not use a header checksum. Only an incorrect checksum, if present, will cause a problem.

- C. An all zeros checksum indicates that there is no payload in the packet.
- D. UDP does not use a checksum with VoIP because single bit errors in voice samples are not noticeable to listeners.

**Answer: B**

#### QUESTION 4

Click the Exhibit button. Router 1 was successfully providing communication between Site A and Site B. However, communications were disrupted when Router 2 was added for redundancy. Which configuration change will restore communication between Site A and B?



- A. changing the OSPF redistribution metric on both routers
- B. enabling RIP version 2
- C. changing OSPF to OSPFv3 on router 2
- D. utilizing filter redistributed routes on both routers

**Answer: D**

#### QUESTION 5

As multimedia traffic increases between your LAN and the WAN, performance continues to drop with all traffic types. What should you do next to troubleshoot this issue? (Select three.)

- A. Analyze user traffic patterns to determine which users have set the priorities too high.
- B. Check buffer utilization on the switches and routers to identify buffers running very near full or overrunning in certain circumstances.
- C. Do a traffic analysis to determine which applications are responsible for the biggest increases in demand.
- D. Check router and switch CPU utilization and expect to see CPU utilization being very high during busy hours.
- E. Do a traffic simulation to reproduce the real life results in a computer model.

**Answer:** BCD

**QUESTION 6**

Click the Exhibit button. A security audit determined that users in the Guest VLAN have FTP access to a server in VLAN 110. Which configuration change on your HP E5400 zl switch corrects this security issue while maintaining access to other desired services?

Running configuration:

```
; J8692A Configuration Editor; Created on release #K.14.65

hostname "HP E5400 z1"
ip access-list extended "End-user"
  10 permit tcp 10.115.0.0 0.0.255.255 10.110.0.4 0.0.0.0 eq 80
  20 permit tcp 10.115.0.0 0.0.255.255 10.110.0.5 0.0.0.0 range 20 21
  exit
ip access-list extended "Guest"
  10 permit tcp 10.116.0.0 0.0.255.255 10.110.0.5 0.0.0.0 range 20 21
  20 permit ip 10.116.0.0 0.0.255.255 172.168.0.0 0.0.255.255
  exit
ip access-list extended "Engineering"
  10 permit ip 10.116.0.0 0.0.255.255 10.110.0.0 0.0.255.255
  20 permit ip 10.116.0.0 0.0.255.255 172.168.0.0 0.0.255.255
  exit
ip access-list extended "Finance"
  10 permit tcp 10.114.0.0 0.0.255.255 10.110.0.5 0.0.0.0 range 20 21
  exit
ip access-list extended "Marketing"
  10 permit tcp 10.114.0.0 0.0.255.255 10.110.0.4 0.0.0.0 eq 80
  20 permit ip 10.114.0.0 0.0.255.255 172.168.0.0 0.0.255.255
  exit
module 1 type J86xxA
ip routing
vlan 1
  name "DEFAULT_VLAN"
  untagged 1-24
  ip address dhcp-bootp
  exit
vlan 112
  name "Engineering"
  ip address 10.112.0.1 255.255.0.0
  tagged 2
  ip access-group "Engineering" out
  exit
vlan 113
  name "Marketing"
  ip address 10.113.0.1 255.255.0.0
  tagged 3
  ip access-group "Marketing" out
  exit
vlan 114
  name "Finance"
  ip address 10.114.0.1 255.255.0.0
  tagged 4
  ip access-group "Finance" out
  exit
vlan 115
  name "End-user"
  ip address 10.115.0.1 255.255.0.0
  tagged 5
  ip access-group "End-user" out
  exit
vlan 116
  name "Guest"
  ip address 10.116.0.1 255.255.0.0
  tagged 6
  ip access-group "Guest" out
  exit
vlan 110
  name "Server-Farm"
  ip address 10.110.0.1 255.255.0.0
  tagged 24
```

- A. adding a new ACL to deny access to the file server from the Guest VLAN
- B. removing the FTP ACE from the Guest ACL
- C. removing all ACEs from the Guest ACL
- D. adding a deny statement for the FTP ACE to the end of the Guest ACL

**Answer: B**

#### **QUESTION 7**

You are using HP Intelligent Management Center (IMC) to manage your HP and Cisco devices. Which settings must be properly configured on the devices for IMC to discover them? (Select two.)

- A. SNMPv2 read-only community
- B. SNMP trap server
- C. IP address
- D. LLDP
- E. SNMPv3 community

**Answer: AC**

#### **QUESTION 8**

Your network includes Cisco and HP devices, and you have purchased HP Intelligent Management Center (IMC) to manage them. Your network is quite complex and features many subnets and devices. The network infrastructure devices have their management IP addresses on just a few of those subnets. You want to configure IMC to discover all of your Cisco and HP devices as quickly as possible. Which discovery method should you configure?

- A. ARP-based
- B. Routing-based
- C. Remote-network-based
- D. Network-segment-based

**Answer: D**

#### **QUESTION 9**

Which statement is true about HP E5400 zl Series switches' support for Cisco Discovery Protocol (CDP)?

- A. They recognize CDP frames but do not transmit them to switch neighbors.
- B. They do not transmit CDP frames or recognize them.
- C. They support receiving and transmitting CDP frames, but you must enable this protocol manually.
- D. They transmit Link Layer Discovery Protocol (LLDP) frames by default, but will respond with CDP frames if they receive them.

**Answer: A**

## Thank You for Trying Our Product

### Braindump2go Certification Exam Features:

- ★ More than **99,900** Satisfied Customers Worldwide.
- ★ Average **99.9%** Success Rate.
- ★ **Free Update** to match latest and real exam scenarios.
- ★ **Instant Download** Access! No Setup required.
- ★ Questions & Answers are downloadable in **PDF** format and **VCE** test engine format.
- ★ Multi-Platform capabilities - **Windows, Laptop, Mac, Android, iPhone, iPod, iPad**.
- ★ **100%** Guaranteed Success or **100%** Money Back Guarantee.
- ★ **Fast**, helpful support **24x7**.



View list of all certification exams: <http://www.braindump2go.com/all-products.html>



Microsoft



ORACLE



CITRIX



JUNIPER  
NETWORKS



EMC<sup>2</sup>  
where information lives<sup>®</sup>

**10% Discount Coupon Code: BDN2014**