



**Vendor:** Cisco

**Exam Code:** 400-051

**Exam Name:** CCIE Collaboration Written Exam v2.0

**Version:** DEMO

#### QUESTION 1

Which Cisco IOS-XE dial-peer command has the highest preference for inbound H.323 dial-peer matching?

- A. Incoming URI to<Uri-tag>
- B. Answer-address <number-string>
- C. Incoming called-number <number-string>
- D. Incoming calling-number e164-pattern-map <pattern-map-no>
- E. Destination-pattern <number-string>

**Answer: C**

#### QUESTION 2

Which three Cisco Unity Connection call handler greetings can be overridden by the internal greeting? (Choose three.)

- A. error
- B. alternate
- C. holiday
- D. closed
- E. busy
- F. standard

**Answer: C, D, F**

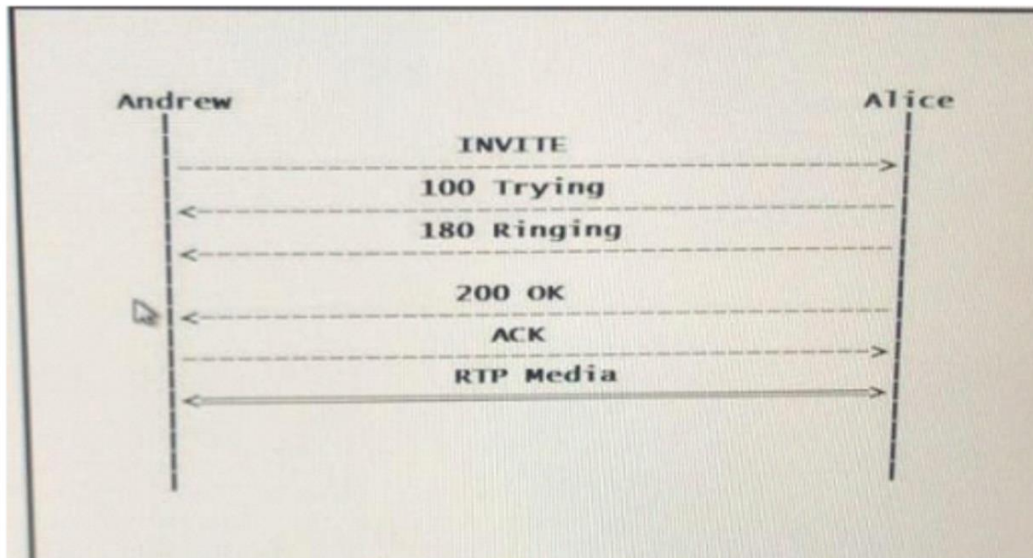
#### QUESTION 3

How are queues serviced in Cisco IOS routers with the CBWFQ algorithm?

- A. Weighted round robin based on assigned priority
- B. First-in, first-out
- C. Last-in, first-out
- D. Weighted round robin based on assigned bandwidth
- E. Strict priority based on assigned priority

**Answer: D**

#### QUESTION 4



Refer to the exhibit. Which events is next in this SIP call flow when Andrew hangs up the call?

- A. A NOTIFY is generated by Andrew
- B. A CANCEL is generated by Andrew
- C. A "487 Request Terminated" is generated by Andrew
- D. A DISCONNECT is generated by Andrew
- E. A BYE is generated by Andrew

**Answer: E**

#### QUESTION 5

```
!  
voice register dn 1  
  number 2001  
  huntstop channel 10  
!  
voice register pool 1  
  id mac 1111.1111.1111  
  type 7965  
  number 1 dn 1  
!
```

Refer to the exhibit. How many calls, inbound and outbound combined, are supported on the IP phone?

- A. 1
- B. 2
- C. 8
- D. 12
- E. 50

**Answer: E**

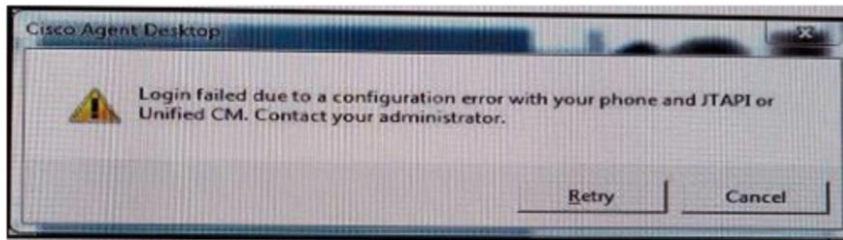
#### QUESTION 6

Which statement about system broadcast messages in Cisco Unity Connection is true?

- A. The user can skip a system broadcast message to listen to new messages first.
- B. The user can forward a system broadcast message only if it has been played in its entirety.
- C. System broadcast messages are synchronized between Cisco Unity Connection and Exchange when Single Inbox is configured.
- D. System broadcast messages do not trigger MWI.
- E. System broadcast messages are played immediately after users sign in and listen to message counts for new and saved messages.

**Answer: D**

#### QUESTION 7



Refer to the exhibit, which two are possible causes of the error message when an agent attempted to log into the Cisco Agent Desktop? (Choose two)

- A. The IPCC extension is not associated with the end user.
- B. The resource is not available under Cisco Desktop Administrator.
- C. The RCM subsystem is stuck in the initializing state.
- D. The incorrect extension was entered by the agent while logging onto Cisco Agent Desktop.
- E. The MAC of the agent phone is not associated with RCM application user on the Cisco Unified Communications Manager.

**Answer: D, E**

## Thank You for Trying Our Product

### Braindump2go Certification Exam Features:

- ★ More than **99,900** Satisfied Customers Worldwide.
- ★ Average **99.9%** Success Rate.
- ★ **Free Update** to match latest and real exam scenarios.
- ★ **Instant Download** Access! No Setup required.
- ★ Questions & Answers are downloadable in **PDF** format and **VCE** test engine format.
- ★ Multi-Platform capabilities - **Windows, Laptop, Mac, Android, iPhone, iPod, iPad**.
- ★ **100%** Guaranteed Success or **100%** Money Back Guarantee.
- ★ **Fast**, helpful support **24x7**.



View list of all certification exams: <http://www.braindump2go.com/all-products.html>



Microsoft



ORACLE



CITRIX



JUNIPER  
NETWORKS



EMC<sup>2</sup>  
where information lives<sup>®</sup>

**10% Discount Coupon Code: BDN2014**