

Exam Code: HP0-S15

Exam Name: Planning and Designing ProLiant Solutions
for the Enterprise

Vendor: HP

Version: DEMO

Part: A

1: What integrates with the HP System Management Homepage to enable network administrators to maintain detailed server inventory and track historical configuration changes?

- A. Version Control Agents (VCA)
- B. HP Insight Diagnostics Online
- C. Array Configuration Utility (ACU)
- D. Open Services Event Manager (OSEM)

Correct Answers: B

2: What is the recommended method of configuring the access security control between HP Systems Insight Manager (HP SIM) and the System Management Homepage (SMH)?

- A. configuring trust by name in HP SIM
- B. configuring trust by certificate in the SMH
- C. synchronizing the password files between SMH and HP SIM
- D. importing the Secure Shell (SSH) private key generated by HP SIM into SMH

Correct Answers: B

3: Which option do you lose when you use the shared LAN network connection with Integrated Lights-Out (iLO)?

- A. graphic console
- B. virtual serial port
- C. virtual power button
- D. text-based interaction

Correct Answers: A

4: Which feature is available on the HP Remote Insight Lights-Out Edition II (RILOE II) board that is not available on HP Integrated Lights-Out (iLO)?

- A. use of auxiliary power
- B. reset and failure sequence replay
- C. directory integration for user management
- D. view of the Integrated Management Log (IML)

Correct Answers: B

5: What is used by Integrated Lights-Out (iLO) to improve security? (Select two.)

- A. XML scripting
- B. Secure Shell (SSH)
- C. virtual password store
- D. Secure Sockets Layer (SSL)
- E. Secure Task Execution (STE)

Correct Answers: B D

6: Which feature is a part of the HP Insight Control Environment for BladeSystem suite but not a part of the Insight Control Environment suite?

- A.server health and performance monitoring
- B.rapid image or script-based server deployment
- C.unified virtual and physical server management
- D.remote control including virtual KVM and virtual media

Correct Answers: C

7: What are benefits of the HP Insight Control Environment for BladeSystem? (Select two.)

- A.It is backward compatible to p-Class.
- B.It provides unified virtual and physical server management.
- C.It is a free plug-in for HP Systems Insight Manager (HP SIM).
- D.It can be fully integrated with the HP Rapid Deployment Pack.
- E.It is sold as a separate license pack for HP Systems Insight Manager (HP SIM).

Correct Answers: A B

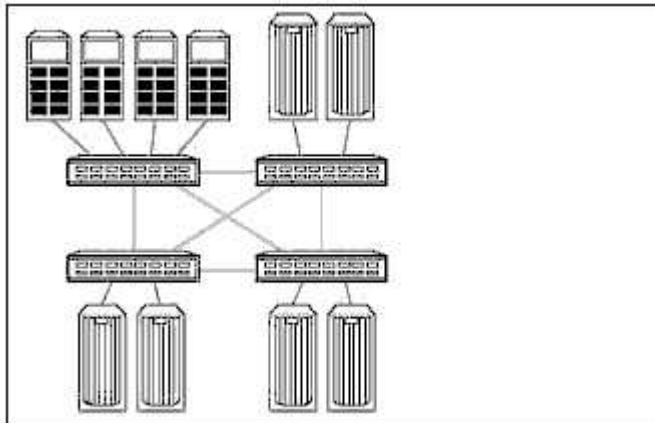
8: An administrator wants to monitor the performance of an HP StorageWorks MSA1500, connected to an HP ProLiant server using HP Performance Management Pack (PMP). What should the administrator do to accomplish this?

- A.License the ProLiant server.
- B.Add the StorageWorks MSA1500 to the PMP database.
- C.License the ProLiant server as well as the StorageWorks MSA1500.
- D.Install the MSA Performance Management Agents on the ProLiant server.

Correct Answers: C

9: Click the Exhibit button.

Which Fibre Channel SAN fabric topology is shown in the exhibit?



- A.ring fabric
- B.meshed fabric
- C.backbone fabric
- D.cascaded fabric

Correct Answers: B

10: Which HP StorageWorks MSA can connect up to four MSA30 SCSI enclosures, has no Fibre Channel interface and is designed as a foundation for future solutions to ensure maximum

investment protection?

A.MSA500

B.MSA1000

C.MSA1510i

D.MSA1500cs

Correct Answers: C