



Vendor: Microsoft

Exam Code: 70-982

Exam Name: Recertification for MCSE: Desktop
Infrastructure

Version: DEMO

QUESTION 1

Your network contains an Active Directory domain named contoso.com. The domain contains an internal network and a perimeter network. The perimeter network contains a server named Gateway1 that has the Remote Desktop Gateway role service installed. From the Internet, all of the domain users can access several Remote Desktop Session Host (RD Session Host) servers on the internal network by using Remote Desktop Gateway (RD Gateway) on Gateway1.

Currently, the users cannot access their internal desktop computer from the Internet by using RD Gateway on Gateway1.

On the internal network, a user named User1 has a client computer named Computer1 that runs Windows 8.

You enable Remote Desktop on Computer1.

You need to ensure that User1 can access Computer1 from the Internet by using a Remote Desktop connection.

What should you configure?

- A. The Windows Firewall with Advanced Security settings on Gateway1
- B. The Windows Firewall with Advanced Security settings on Computer1
- C. The Remote Desktop connection authorization policies (RD CAPs) on Gateway1
- D. The Remote Desktop resource authorization policies (RD RAPs) on Gateway1

Answer: D

Explanation:

The users can access to the Remote Desktop Session Host (RD Session Host) servers on the internal network by using Remote Desktop Gateway, but, they can't access to particular computer. RD RAPs allow you to specify the internal network resources that remote users can connect to through an RD Gateway server. When you create an RD RAP, you can create a computer group (a list of computers on the internal network to which you want the remote users to connect) and associate it with the RD RAP. Remote users connecting to an internal network through an RD Gateway server are granted access to computers on the network if they meet the conditions specified in at least one RD CAP and one RD RAP. Understanding Authorization Policies for Remote Desktop Gateway

QUESTION 2

Your network contains an Active Directory domain named contoso.com. The domain contains servers that run Windows Server 2012.

You plan to deploy a Remote Desktop Virtualization Host (RD Virtualization Host) that will contain five virtual desktops. The requirement of each virtual desktop is shown in the following table.

Virtual desktop name	Requirement
VD1	Must support creating snapshots of virtual disks.
VD2	Must support dynamically expanding virtual disks.
VD3	Must support differencing virtual hard disks.
VD4	Must support adding or removing storage when the virtual machine runs.
VD5	Must support at least three virtual disk controllers on each virtual machine.

You need to identify which virtual desktop or virtual desktops require a virtual SCSI controller. Which virtual desktop or desktops should you identify? (Each correct answer presents part of the solution. Choose all that apply.)

- A. VD1
- B. VD2
- C. VD3
- D. VD4
- E. VD5

Answer: AD

QUESTION 3

Your network contains an Active Directory domain named contoso.com. The domain has Remote Desktop Services (RDS) deployed. The domain contains six servers. The servers are configured as shown in the following table.

Server name	Configuration
Server1	Remote Desktop Session Host (RD Session Host)
Server2	Remote Desktop Session Host (RD Session Host)
Server3	Remote Desktop Connection Broker (RD Connection Broker)
Server4	Remote Desktop Web Access (RD Web Access)
Server5	Microsoft SQL Server 2008 R2
Server6	None

You plan to configure Server6 as an additional RD Connection Broker in the RDS deployment. You need to identify which servers require the SQL Server Native Client installed. Which servers should you identify? (Each correct answer presents part of the solution. Choose all that apply.)

- A. Server1
- B. Server2
- C. Server3
- D. Server4
- E. Server5
- F. Server6

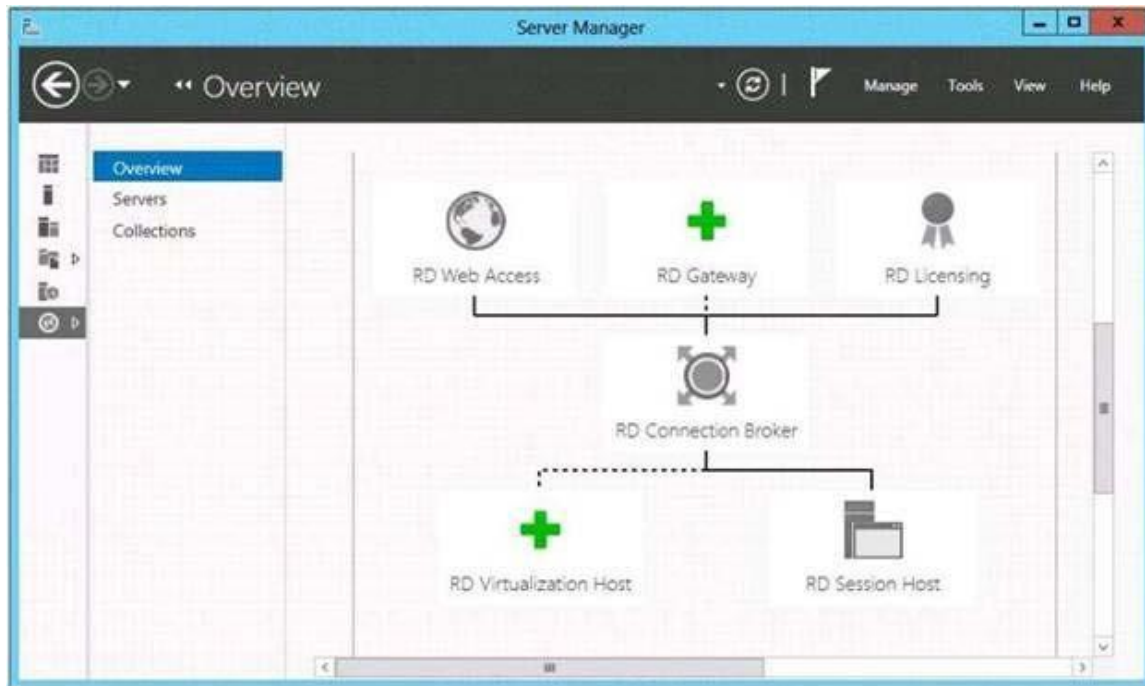
Answer: CF

Explanation:

You must have a SQL Server setup that can be used by the RD Connection Broker servers to store data. At least SQL Server 2008 R2 must be used, and the minimum recommended SQL Server SKU for this is Standard with at least 4GB of RAM. RD Connection Broker High Availability in Windows Server

QUESTION 4

You have a server named Server1.



You need to ensure that you can publish RemoteApp programs.
What should you do?

- A. Create a Remote Desktop connection authorization policy (RD CAP).
- B. Install the Remote Desktop Gateway role service.
- C. Create a collection.
- D. Install the Remote Desktop Virtualization Host role service.

Answer: C

Explanation:

A RD CAP isn't right as this isn't a RD Gateway scenario B RD Gateway doesn't appear to be in play here C RemoteApp programs are published to either a session collection or virtual desktop collection using Server Manager. D RD Virtual Host implies we are using a VDI pool and that doesn't appear to be the case with a RemoteApp. Test Lab Guide: Remote Desktop Services Publishing <http://technet.microsoft.com/en-us/library/hh831442.aspx>
<http://class10e.com/Microsoft/you-need-to-ensure-that-you-can-publish-remoteappprograms/>

QUESTION 5

Your network contains an Active Directory domain named contoso.com. The domain has Remote Desktop Services (RDS) deployed.

The domain contains two servers named Server1 and Server2 that have the Remote Desktop Web Access role service installed. The RD Web Access sites are accessible by using the URL <https://rdp.contoso.com/rdweb>.

You connect to <https://rdp.contoso.com/rdweb> and you receive the error message shown in the exhibit. (Click the Exhibit button.)



You need to prevent the error message from appearing when users connect to the RD Web Access sites.

You obtain a server certificate for rdp.contoso.com from a trusted certification authority (CA). What should you do next? More than one answer choice may achieve the goal. Select the BEST answer.

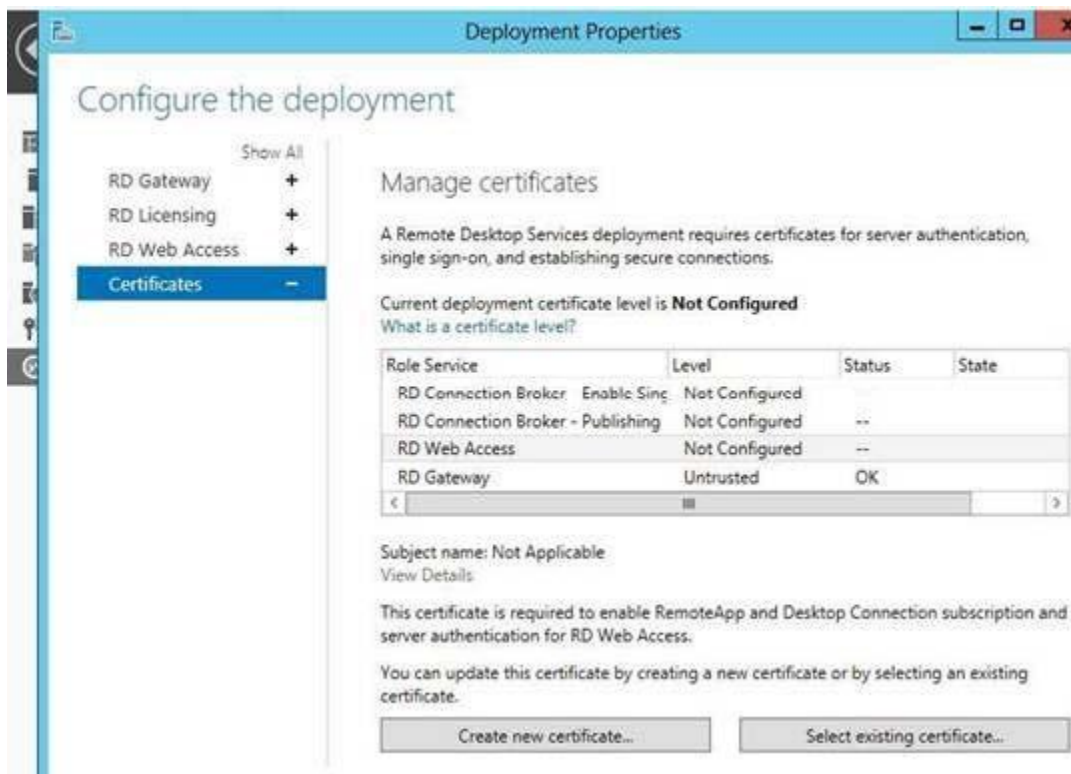
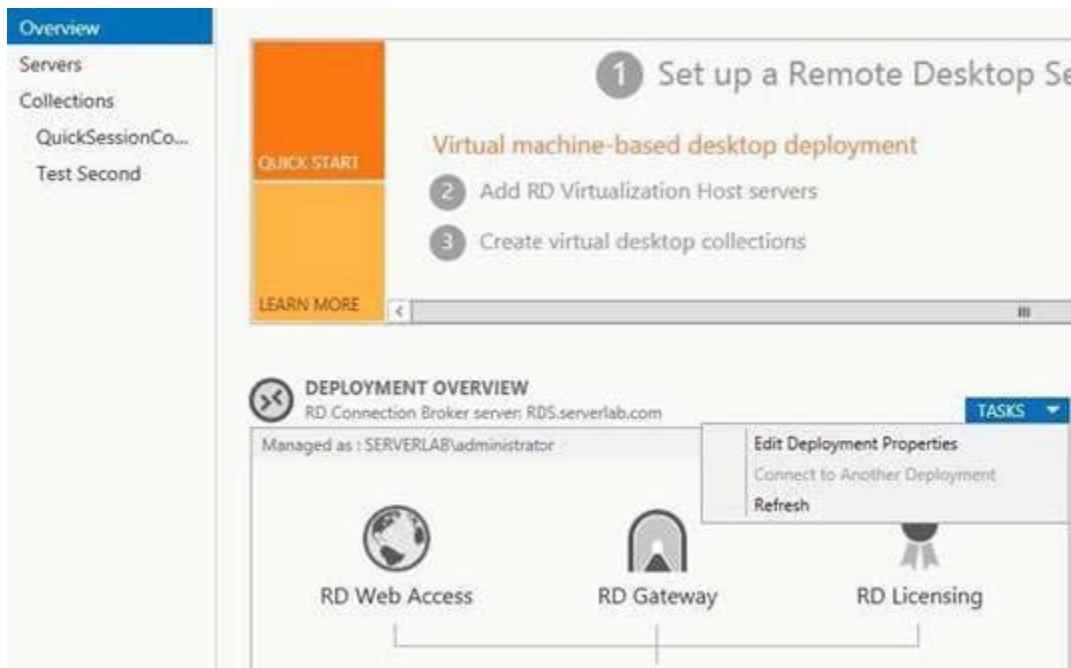
- A. On Server1 and Server2, open the Certificates console and import the server certificate to the Trusted Publishers store.
- B. On Server1 and Server2, open the Certificates console and import the server certificate to the Remote Desktop certificate store.
- C. From Server Manager, open the properties of the RDS deployment and select the server certificate.
- D. On Server1 and Server2, open Internet Information Services (IIS) Manager and modify the bindings of the Default Web Site.

Answer: C

Explanation:

You can click Task -> Edit Deployment Properties, in the Certificate tab, you can configure the certificate for RD Web Access.

<http://social.technet.microsoft.com/Forums/windowsserver/en-US/b71b2aaf-9f00-44f88c7bb6d369af14c9/rd-web-access-certificate-in-server-2012-how-to-install?forum=winserverTS>



QUESTION 6

You manage a pooled virtual desktop collection named Collection1.

Collection1 is configured to use user profile disks.

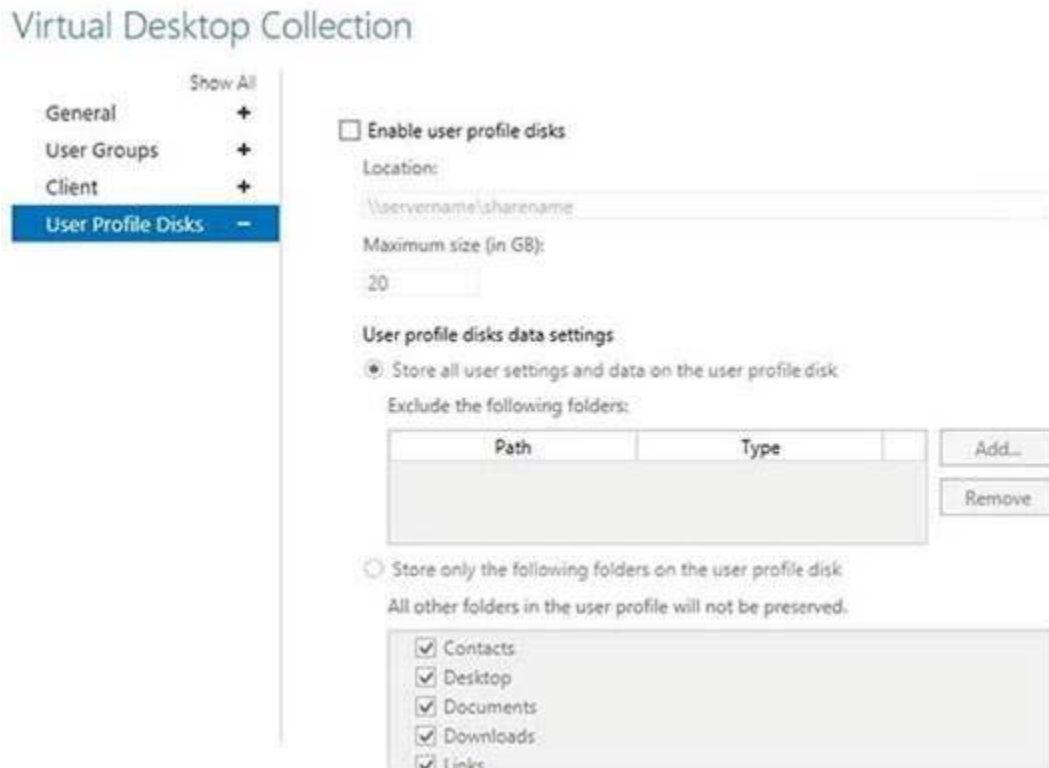
You need to ensure that when users log off of their virtual desktop, the contents of the Downloads, Music, and Pictures folders are deleted. The contents of the other profile folders must be retained.

What should you do?

- A. From a Group Policy object (GPO), modify the Folder Redirection settings.
- B. From the properties of each user account, modify the Remote Desktop Service Profile settings.
- C. From Server Manager, modify the properties of Collection1.
- D. From the properties of each user account, modify the Sessions settings.

Answer: C

Explanation:



QUESTION 7

You have a server named Server1 that runs Windows Server 2012. Server1 has the Remote Desktop Virtualization Host role service installed.

You plan to create two virtual desktop collections named Collection1 and Collection2. Each collection will support a separate group of users.

The requirements of each collection are shown in the following table.

Collection	Requirement
Collection1	<ul style="list-style-type: none"> • Updates must be applied automatically. • Data must NOT persist between sessions. • The template virtual machine image must be the same for all users. • New virtual desktops must be created automatically when the users connect.
Collection2	<ul style="list-style-type: none"> • Updates must be applied manually. • All virtual desktops must be created manually. • User data and applications must persist between sessions. • Users must be able to install applications on their virtual desktop.

You need to identify the required configuration for each collection.
 What should you identify? To answer, select the appropriate Collection type and Management type for each collection in the dialog box in the answer area.

Collection name	Collection type	Management type
Collection1	<input type="text"/> Pooled Personal	<input type="text"/> Managed Unmanaged
Collection2	<input type="text"/> Pooled Personal	<input type="text"/> Managed Unmanaged

Answer:

Collection name	Collection type	Management type
Collection1	<input type="text"/> Pooled Personal	<input type="text"/> Managed Unmanaged
Collection2	<input type="text"/> Pooled Personal	<input type="text"/> Managed Unmanaged

QUESTION 8

Your network contains an Active Directory domain named contoso.com. The domain contains five servers. The servers are configured as shown in the following table.

Server name	Configuration
Server1	Microsoft System Center 2012 Service Manager
Server2	Microsoft System Center 2012 Virtual Machine Manager (VMM) Administrator Console
Server3	Microsoft System Center 2012 Virtual Machine Manager (VMM) management server
Server4	Library server
Server5	Hyper-V host

You plan to deploy the Virtual Machine Servicing Tool (VMST) 3.0. You need to identify on which server VMST 3.0 must be installed.

Which server should you identify?

- A. Server1
- B. Server2
- C. Server3
- D. Server4
- E. Server5

Answer: B

Explanation:

VMST3 must be installed on the same server as the VMM Administrator Console (which provides the Windows PowerShell support).

QUESTION 9

You have a corporate image of Windows 8 named Image1.wim.

You deploy Image1 from a bootable USB flash drive to a client computer named Computer1.

You add several applications to Image1 and configure the applications.

You need to capture the modified image to the bootable USB flash drive as Image2. The solution must meet the following requirements:

- The amount of disk space required for storage must be minimized.
- The settings of Image1 must be retained.

You start the client computer from a Windows Pre-installation Environment (Windows PE) deployment image.

What should you do next? (Each correct answer presents a complete solution. Choose all that apply.)

- A. Run the imagex.exe command and specify the /capture parameter.
- B. Run the imagex.exe command and specify the /append parameter.
- C. Run the dism.exe command and specify the /capture-image parameter.
- D. Run the dism.exe command and specify the /append-image parameter.

- E. Run the diskpart attach command.
- F. Run the diskpart select command.

Answer: CF

Explanation:

Run the dism.exe command and specify the /capture-image parameter
[http://msdn.microsoft.com/en-us/library/jj980032\(v=winembedded.81\).aspx](http://msdn.microsoft.com/en-us/library/jj980032(v=winembedded.81).aspx)

<pre> /Capture-Image /ImageFile: <path_to_image_file> /CaptureDir: <source_directory> /Name: <image_name> [/Description: <image_description>] [/ConfigFile: <configuration_file.ini>] [/Compress: max fast none] [/Bootable] [/CheckIntegrity] [/Verify] [/NoRpFix] </pre>	<p>Captures an image of a drive to a new .wim file. Captured directories include all subfolders. The source directory must contain at least one file. This command-line option does not apply to virtual hard disk (VHD) files.</p> <p>Important:</p> <p>DISM does not support extended attributes. DISM ignores extended attributes during a capture operation.</p> <p>/ConfigFile specifies the location of a configuration file that lists exclusions for image capture. The file must be in the same directory as the .wim file.</p> <p>/Compress specifies the type of compression used for the initial capture operation. The max option takes more time to capture the image. The fast option provides faster image compression. The none option does not compress the captured image at all.</p> <p>/Bootable marks a volume image as being a bootable image. This argument is available only when capturing a volume image. The image can be marked as bootable in a .wim file.</p> <p>/CheckIntegrity detects and tracks .wim file corruption when used with capture, mount, or apply. It stops the operation if DISM detects that the .wim file is corrupted when used with apply.</p> <p>/Verify checks for errors and file duplication.</p> <p>/NoRpFix disables the reparse point tag fix. A reparse point is a file that contains a link to a specified reparse point that resolves to paths outside of the value specified by /ImageFile.</p>
<pre> Dism /Capture-Image /ImageFile:install.wim /CaptureDir:D:\ /Name:DriveD </pre>	

Run the imagex.exe command and specify the /append parameter.
[http://technet.microsoft.com/en-us/library/cc749447\(v=ws.10\).aspx](http://technet.microsoft.com/en-us/library/cc749447(v=ws.10).aspx)

<pre> imagex /append image_path image_file ("description") [/boot /check /config configuration_file.ini /scroll /verify] </pre>	<p>Appends a volume image to an existing Windows image (.wim) file. Creates a single instance of the image in the .wim file, so you do not capture the same file twice.</p> <p>Important:</p> <p>You must run this option from the Windows Preinstallation Environment (Windows PE). In addition, you must use the /append option to run. If you run out of disk space during the /append option, you may receive an error.</p> <p>Important:</p> <p>The .wim file can have only one assigned compression type; therefore, you can append only files of the same compression type.</p> <p>image_path Specifies the name and the location of the existing .wim file to append.</p> <p>image_file Specifies the name and the location of the volume image that appends the existing file.</p> <p>"description" Specifies the text that provides additional reference information. The straight quotation marks are required. You can also set the following options:</p> <p>/boot Marks a volume image as bootable. This option applies only to Windows PE images. Only one /boot option can be used.</p> <p>/check Checks the integrity of the .wim file. If not provided, existing checks are removed.</p> <p>/config configuration_file.ini Specifies the name and the location of the configuration file. You can rename this file as necessary.</p> <p>/scroll Scrolls output for redirection.</p> <p>/verify Enables file resource verification by checking for errors and file duplication. For example:</p> <pre> imagex /append d: d:\imaging\data.wim "Drive D" /verify </pre>
---	---

You can append a volume to an existing image. DISM and ImageX can both be used for this function.

QUESTION 10

Your network contains an Active Directory domain named contoso.com.

You have a custom image of Windows 8 that contains a Windows Store application named Appl.

You need to remove App1 completely from the image.

You must achieve the goal by using the minimum amount of administrative effort.

What should you do?

- A. Run the `dism.exe` command and specify the `/image` parameter and the `/Remove-Package` parameter.
- B. Run the `dism.exe` command and specify the `/image` parameter and the `/Remove-ProvisionedAppxPackage` parameter.
- C. Run the `imagex.exe` command and specify the `/mountw` parameter and the `/delete` parameter.
- D. Run the `imagex.exe` command and specify the `/mountw` parameter and the `/cleanup` parameter.

Answer: B

Explanation:

You run `dism -online /Remove-ProvisionedAppxPackage /PackageName:<packagename>` to un-provision the Appx Packages.

Removing or Updating Windows 8 built-in Windows Store apps causes Sysprep to fail.

The correct way of removing the package is to remove the package for the user running sysprep and also remove the provisioning. This can be done using the following Powershell cmdlets:

1. `Import-Module Appx`
2. `Import-Module Dism`
3. `Get-AppxPackage -AllUser | Where PublisherId -eq 9wekyb3d8bbwe | Format-List -Property PackageFullName,PackageUserInformation`

Notes:

- From the output of the above command, check the users for whom the package is showing up as **installed**. Delete these user accounts from the reference machine, or log in to the machine using these user accounts and run Step 4 to remove the Appx Package.
- The above command lists all packages that were published by Microsoft and installed by any user of that reference machine. Since the machine is to be sysprepped, we assume that these user profiles no longer need the package.
- If you have manually provisioned apps belonging to other publishers, then use the command below to list them:

Get-AppxPackage -AllUser | Format-List -Property PackageFullName,PackageUserInformation

4. `Remove-AppxPackage -Package <packagefullname>`
5. Remove the Provisioning using the following cmdlet: `Remove-AppxProvisionedPackage -Online -PackageName <packagefullname>`

Note: The issue will not occur if you are servicing an offline image since then the provisioning is automatically cleared for all users, including the user who runs the command.

Thank You for Trying Our Product

Braindump2go Certification Exam Features:

- ★ More than **99,900** Satisfied Customers Worldwide.
- ★ Average **99.9%** Success Rate.
- ★ **Free Update** to match latest and real exam scenarios.
- ★ **Instant Download** Access! No Setup required.
- ★ Questions & Answers are downloadable in **PDF** format and **VCE** test engine format.
- ★ Multi-Platform capabilities - **Windows, Laptop, Mac, Android, iPhone, iPod, iPad.**
- ★ **100%** Guaranteed Success or **100%** Money Back Guarantee.
- ★ **Fast**, helpful support **24x7**.



View list of all certification exams: <http://www.braindump2go.com/all-products.html>



Microsoft



ORACLE



CITRIX



JUNIPER
NETWORKS



EMC²
where information lives[®]

10% Discount Coupon Code: BDNT2014