



Vendor: IBM

Exam Code: A2150-575

Exam Name: Assess: IBM Tivoli Federated Identity Manager
V6.2.2

Version: DEMO

QUESTION 1

Which HTTP status code is always issued by an identity provider using SAML 1.1 Browser/POST when communicating with the Assertion Consumer Service?

- A. 101
- B. 200
- C. 206
- D. 302

Answer: B

QUESTION 2

Custom Java mapping functions must be deployed into which IBM Tivoli Federated Identity Manager V6.2.2 directory?

- A. Plug-ins
- B. Add-ins
- C. Mappings
- D. Extensions

Answer: A

QUESTION 3

What is always required when deploying the IBM Tivoli Federated Identity Manager V6.2.2 runtime and management service?

- A. WebSEAL
- B. IBM HTTP Server
- C. IBM Tivoli Identity Manager
- D. IBM WebSphere Application Server

Answer: D

QUESTION 4

What does this XSL code do?

```
<xsl:template match="@* | node()">
<xsl:copy>
<xsl:apply-templates select="@* | node()" />
</xsl:copy>
</xsl:template>
```

- A. It makes a copy of the template transforms on the input document.
- B. It performs a series of transforms on a copy of the input document.
- C. It creates a new copy of the input document, copying all attributes, but not elements.
- D. It creates a new copy of the input document, copying all elements, but not attributes.

Answer: B

QUESTION 5

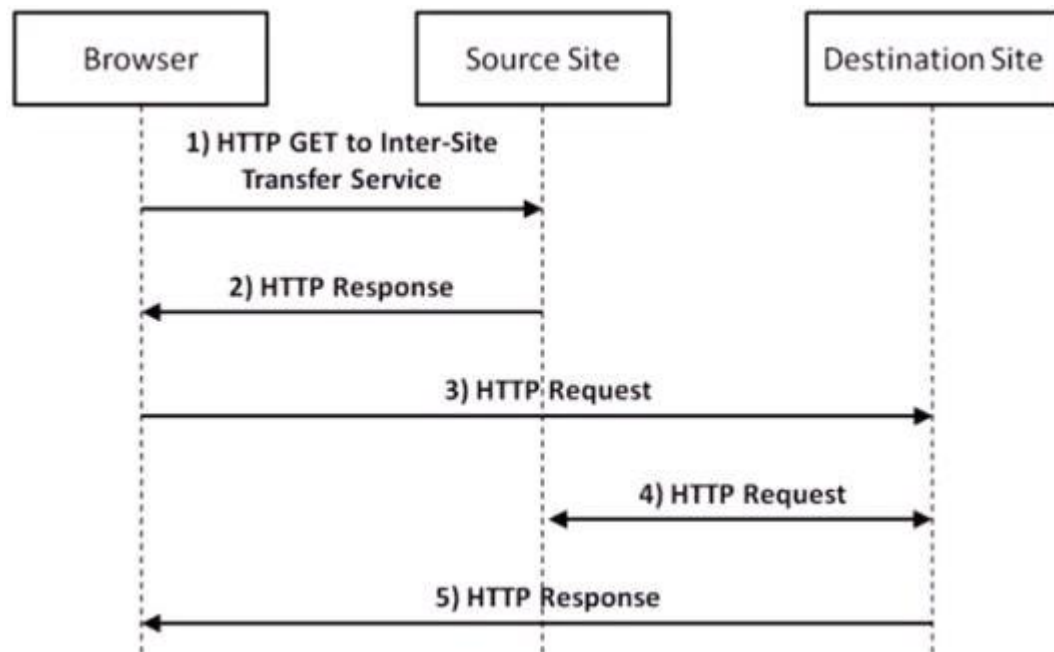
What is the default file name of the IBM Tivoli Directory Integrator log?

- A. tdi.log
- B. ibmdi.log
- C. ibmdisrv.log
- D. ibmdirectoryintegrator.log

Answer: B

QUESTION 6

Click the Exhibit button.



Which three statements are true regarding this SAML 1.1 flow diagram? (Choose three.)

- A. The HTTP request in Step 3 is a GET.
- B. The assertion is sent with an HTTP 200 response in Step 2.
- C. An artifact value is sent with an HTTP 302 response in Step 2.
- D. This is a Browser/POST profile, so in Step 3 the assertion is sent to the Assertion Consumer Service endpoint through an HTTP POST of an HTML form.
- E. The HTTP response in Step 5 must be a 302 redirect based upon the resource requested and the user's authorized access which is determined by the response in Step 4.
- F. This is a Browser/Artifact profile, so the artifact received in Step 2 must be sent to the Artifact Resolution Service in Step 3, and the assertion must be retrieved through a SOAP backchannel in Step 4.

Answer: ACF

QUESTION 7

What is XSLT?

- A. A concatenative language for transforming input XML documents into new documents, which typically takes an XML source document and applies template rules to subexpressions, producing a new output document.
- B. A declarative language for transforming input XML documents into new documents, which typically takes an XML source document and applies template rules in an XSLT stylesheet to it, producing a new output document.
- C. An imperative language for transforming input XML documents into new documents, which typically takes an XML source document and applies template rules in an XSLT stylesheet to it, producing a new output document.
- D. A automata-based language for transforming input XML documents into new documents, which typically takes an XML source document and applies template rules to transition element states, producing a new output document.

Answer: B

QUESTION 8

What is always required when creating an IBM Tivoli Federated Identity Manager V6.2.2 (TFIM) Single Sign-On federation partner?

- A. A signer certificate
- B. A login protocol endpoint
- C. A metadata file containing the partner definitions
- D. A federation default or partner-specific mapping rule or function

Answer: D

QUESTION 9

Given IBM Tivoli Federated Identity Manager V6.2.2 configured as an OpenID provider, what is a correct statement regarding processing of attributes when using an IBM Tivoli Directory Integrator AssemblyLine as a mapping function?

- A. Only requested attributes can be returned.
- B. All attributes requested must be BASE64 encoded to ensure proper handling.
- C. The AssemblyLine must assure that values for non-optional attributes are returned.
- D. Requested attributes that have an empty value (not an empty string) must be removed and cannot be returned.

Answer: C

QUESTION 10

Which statement is true regarding event pages when creating a federation in IBM Tivoli Federated Identity Manager V6.2.2 (TFIM)?

- A. Event pages are tied to a protocol and not to a specific federation.
- B. Event pages must be created (or copied from the defaults) and stored in the federation event directory.
- C. Event pages can use the @FEDSTATUS@ macro to provide detailed Single Sign-On status information to the user.
- D. When creating event pages for a federation, it is important to append the federation name to the event page filename so the TFIM runtime will use that instead of the default protocol event page.

Answer: A

QUESTION 11

A customer uses WebSEAL as the point of contact for IBM Tivoli Federated Identity Manager V6.2.2 (TFIM) where IBM Tivoli Access Manager (TAM) is configured to support Federal Information Processing Standards (FIPS). When running the tfimcfg.jar tool this error is received: FBTTAC1161 The SSL handshake failed. Retrying connection with certificate validation disabled. What must be done?

- A. TFIM must be configured for SSL communication.
- B. FIPS must be enabled on all TFIM WebSphere servers.
- C. The TAM public certificates must be imported to the WebSphere trust store.
- D. The tfimcfg.jar tool needs to run with the-sslfactory TLS argument.

Answer: D

QUESTION 12

What is a trust service chain in IBM Tivoli Federated Identity Manager V6.2.2 (TFIM)?

- A. It is a defined set of WS-Trust security tokens, which together form a proof of trust and are organized sequentially in their correct order of precedence.
- B. It is a defined set of WS-Security trust tokens, which together form a proof of claim and are organized sequentially in their correct order of precedence.
- C. It is a defined set of individual processing module instances, collectively executed in a specific order, with the interface to and roles for each module conforming to the WS-Trust model.
- D. It is a defined set of individual processing module instances which are always executed in the specific order required by the authentication flow, with the interface to and roles for each module conforming to the WS-Trust model.

Answer: C

Thank You for Trying Our Product

Braindump2go Certification Exam Features:

- ★ More than **99,900** Satisfied Customers Worldwide.
- ★ Average **99.9%** Success Rate.
- ★ **Free Update** to match latest and real exam scenarios.
- ★ **Instant Download** Access! No Setup required.
- ★ Questions & Answers are downloadable in **PDF** format and **VCE** test engine format.
- ★ Multi-Platform capabilities - **Windows, Laptop, Mac, Android, iPhone, iPod, iPad**.
- ★ **100%** Guaranteed Success or **100%** Money Back Guarantee.
- ★ **Fast**, helpful support **24x7**.



View list of all certification exams: <http://www.braindump2go.com/all-products.html>



Microsoft



ORACLE



JUNIPER
NETWORKS



EMC²
where information lives[®]

10% Discount Coupon Code: BDNT2014