



Vendor: Cisco

Exam Code: 200-401

Exam Name: Managing Industrial Networks with Cisco
Networking

Version: DEMO

QUESTION 1

Drag and Drop Question

Drag the steps on the left and arrange them in the order they should be completed when commissioning an industrial Ethernet switch on the right.	
Wire the switch to the DC power supply	Step 1
Wire the DC power supply	Step 2
Mount the switch on the DIN rail	Step 3
Connect Patch cords	Step 4
Wire the switch ground to common ground	Step 5
Perform Switch configuration	Step 6

Answer:

Drag the steps on the left and arrange them in the order they should be completed when commissioning an industrial Ethernet switch on the right.	
Wire the switch to the DC power supply	Mount the switch on the DIN rail
Wire the DC power supply	Wire the switch ground to common ground
Mount the switch on the DIN rail	Wire the DC power supply
Connect Patch cords	Wire the switch to the DC power supply
Wire the switch ground to common ground	Perform Switch configuration
Perform Switch configuration	Connect Patch cords

QUESTION 2

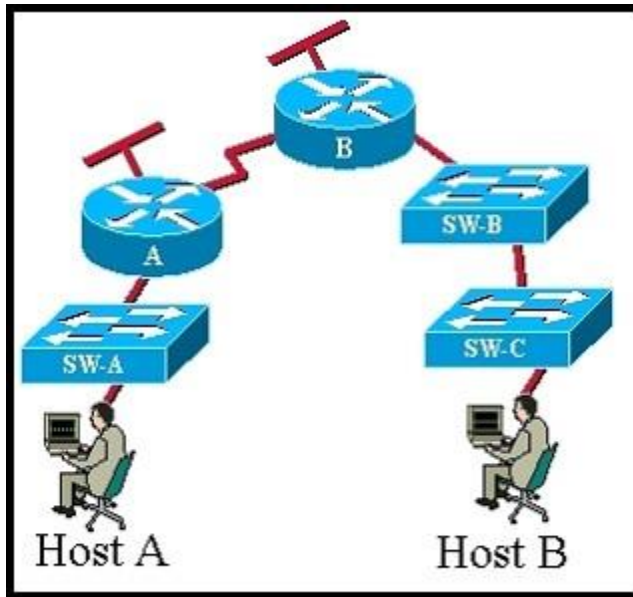
According to the Purdue Reference Model, at which layer would you perform manufacturing operations and control?

- A. Level 0
- B. Level 1
- C. Level 2
- D. Level 3
- E. Level 4

Answer: D

QUESTION 3

Refer to the exhibit. CCNA.com has the industrial network shown in the exhibit. All switches are configured as layer 2 switches and are using VLAN 1 as their management VLAN. Each VLAN 1 interface has been assigned the correct IP address. What is the purpose of assigning a default gateway to SW-C switch?



- A. allows connectivity between the VLAN 1 interface on SW-C and other devices in the network.
- B. allows connectivity between Host A and other devices in the network.
- C. allows connectivity between Host B and other devices in the network.
- D. allows the switch to pass traffic between Host A and Host B

Answer: A

QUESTION 4

What should be done with unused conductors in copper unshielded or shielded twisted-pair network cables?

- A. terminate in their characteristic impedance
- B. trim back and properly insulate
- C. connect to protective earth
- D. splice to a used conductor

Answer: A

QUESTION 5

Which option best describes a mechanical, ingress, climatic, chemical and electromagnetic environment that is classified as M3 I3 C3 E3?

- A. the highest quality
- B. office environment
- C. severe
- D. serviced by multiple cable segments

Answer: C

QUESTION 6

With what are APC connectors used?

- A. Category 6a cables that need tight radius bends
- B. copper network cables in corrosive environments
- C. single-mode fiber-optic cables to reduce return loss
- D. high-density copper patch panels

Answer: C

QUESTION 7

Which characteristic causes multimode fiber-optic cable to differ from single mode?

- A. by allowing multiple network services in the same cable
- B. shorter maximum network segment length for a given bandwidth
- C. a wider variety of available connector types
- D. use outdoors as well as indoors

Answer: B

QUESTION 8

For which three issues should fiber-optic network segments be tested? (Choose three.)

- A. attenuation
- B. near-end crosstalk
- C. length
- D. polarity
- E. jitter
- F. tensile stress

Answer: ACD

QUESTION 9

An Ethernet cable is attached to a PC NIC and then attached to a switch port. The PC power is turned on and the switch port link LED turns green. The link light indicates what two conditions? (Choose two.)

- A. Layer 2 communication has been established between the PC and switch.
- B. The PC has received a DHCP address.
- C. Traffic is being sent from the switch to the PC.
- D. If flashing, the green LED indicates port speed of 100 Mb/s.
- E. The Layer 1 media is functioning between the PC and switch.
- F. The switch port is functioning as a half-duplex connection.

Answer: AE

QUESTION 10

At which Layer would you check ACLs for TCP ports being blocked?

- A. Layer 1

- B. Layer 2
- C. Layer 3
- D. Layer 4

Answer: D

QUESTION 11

What two things does a router do when it forwards a packet? (Choose two.)

- A. switches the packet to the appropriate outgoing interfaces
- B. computes the destination host address
- C. determines the next hop on the path
- D. updates the destination IP address
- E. forwards ARP requests

Answer: AC

QUESTION 12

You are a called upon to troubleshoot connectivity problems to a network device on a production floor. You have used ping and traceroute to verify that you cannot connect to the device from the management network. The network is 209.165.202.128/27 and the device has been given the IP address 209.165.202.158 and mask 255.255.255.224. You have verified that you can reach the device with your computer connected to the same switch as the device. What could be the cause of this problem?

- A. The device is set to the wrong subnet mask.
- B. The device is set to the wrong IP address.
- C. The device has no IP default gateway.
- D. The device is connected to a switchport in the wrong VLAN.

Answer: C

QUESTION 13

At which Layer would you use trace route to validate the path?

- A. Layer 1
- B. Layer 2
- C. Layer 3
- D. Layer 4

Answer: C

Thank You for Trying Our Product

Braindump2go Certification Exam Features:

- ★ More than **99,900** Satisfied Customers Worldwide.
- ★ Average **99.9%** Success Rate.
- ★ **Free Update** to match latest and real exam scenarios.
- ★ **Instant Download** Access! No Setup required.
- ★ Questions & Answers are downloadable in **PDF** format and **VCE** test engine format.
- ★ Multi-Platform capabilities - **Windows, Laptop, Mac, Android, iPhone, iPod, iPad.**
- ★ **100%** Guaranteed Success or **100%** Money Back Guarantee.
- ★ **Fast**, helpful support **24x7**.



View list of all certification exams: <http://www.braindump2go.com/all-products.html>



Microsoft



ORACLE



CITRIX



JUNIPER
NETWORKS



EMC²
where information lives[®]

10% Discount Coupon Code: BDNT2014