



**Vendor:** HP

**Exam Code:** HPE2-Z39

**Exam Name:** Fast Track - Applying Aruba Switching  
Fundamentals for Mobility

**Version:** DEMO

### QUESTION 1

A network administrator needs to configure Virtual Switching Framework (VSF) for the first time on an ArubaOS switch. The administrator enters this command:

```
Switch-1(config)# vsf member 1 link 1 a23,a24
```

The administrator then wants to provision member 2 settings.

What must the administrator do before provisioning these settings?

- A. Specify the model type for member 1.
- B. Configure SNMP settings that match settings configured on member 2
- C. Join member 2 to the VSF fabric.
- D. Enable VSF on the switch and reboot.

**Answer: B**

### QUESTION 2

What is the effect if a network administrator sets a spanning tree priority on an ArubaOS switch interface?

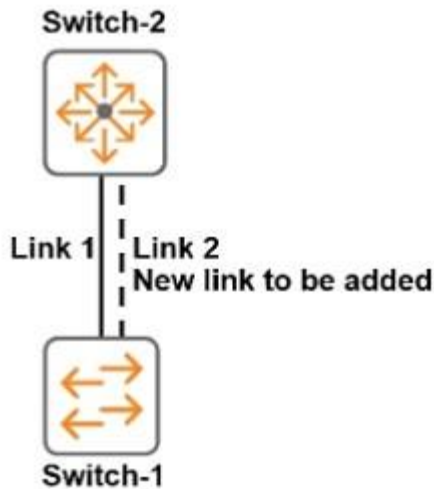
- A. The interface priority helps to determine which switch on the link is elected root.
- B. The interface priority determines whether this switch or the connected switch has the Designated port on the link.
- C. The interface priority breaks a tie when multiple interfaces offer the same lowest cost path to the root through the same neighbor
- D. The interface priority prevents a rogue switch connected to the interface from becoming root.

**Answer: C**

### QUESTION 3

The switches in the exhibit use RSTP The network administrator needs to add Link 2. Why should the administrator configure Links 1 and 2 as a link aggregation?

Refer to the exhibit.



- A. to combine traffic statistics for the interfaces
- B. to prevent a loop from occurring
- C. to share traffic more evenly over both links
- D. to automatically apply the settings already configured for Link 1 to Link 2

**Answer: C**

#### QUESTION 4

Two ArubaOS switches connect on a VLAN, and both enable OSPF on that VLAN. Which VLAN OSPF setting must match for the switches to become fully adjacent neighbors?

- A. DR priority
- B. area ID
- C. cost
- D. router ID

**Answer: D**

#### QUESTION 5

A network administrator has set up a link between two ArubaOS switches. Both switches have an IP address in VLAN 1 and can ping each other in VLAN 1. The administrator then creates VLAN 2 and tags it on the same link of both switches.

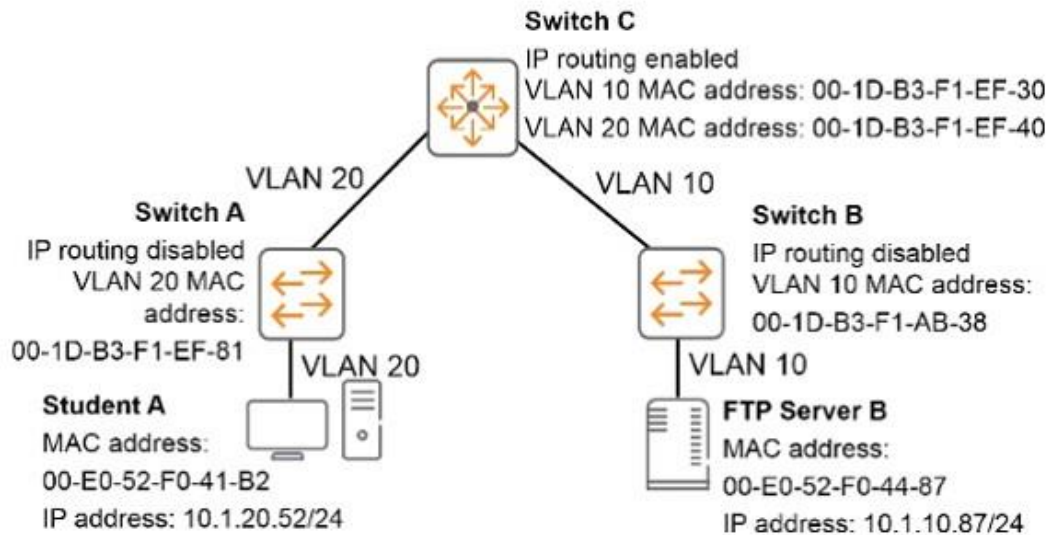
- A. How can the administrator verify that the connectivity in VLAN 2 is functional between the two switches? Use either LLDP or ARP to test connectivity.
- B. Use LLDP to test connectivity.
- C. Assign each switch an IP address in VLAN 2, and use ICMP to test connectivity.
- D. Assign each switch an IP address in VLAN 2, and use LLDP to test connectivity.

**Answer: B**

### QUESTION 6

The Student A client needs to connect to FTP Server B. Student A sends the necessary ARP request and receives a reply. Which destination MAC address does the Student A client use in the FTP packet to FTP Server B?

Refer to the exhibit.



- A. 00-E0-52-F0-41-B2
- B. 00-E0-52-F0-44-87
- C. 00-1D-B3-F1-EF-81
- D. 00-1D-B3-F1-EF-40

**Answer: D**

### QUESTION 7

Network administrators need to access an ArubaOS switch CLI remotely. How can the administrator ensure that all data passed between management stations and the switch is encrypted?

- A. Create local user accounts and enable command authorization.
- B. Configure operator and manager passwords for Telnet access.
- C. Create an SSH key, enable SSH, and disable Telnet.
- D. Enable HTTPS access.

**Answer: D**

## Thank You for Trying Our Product

### Braindump2go Certification Exam Features:

- ★ More than **99,900** Satisfied Customers Worldwide.
- ★ Average **99.9%** Success Rate.
- ★ **Free Update** to match latest and real exam scenarios.
- ★ **Instant Download** Access! No Setup required.
- ★ Questions & Answers are downloadable in **PDF** format and **VCE** test engine format.
- ★ Multi-Platform capabilities - **Windows, Laptop, Mac, Android, iPhone, iPod, iPad**.
- ★ **100%** Guaranteed Success or **100%** Money Back Guarantee.
- ★ **Fast**, helpful support **24x7**.



View list of all certification exams: <http://www.braindump2go.com/all-products.html>



Microsoft



ORACLE



CITRIX



JUNIPER  
NETWORKS



EMC<sup>2</sup>  
where information lives<sup>®</sup>

**10% Discount Coupon Code: BDN2014**