



**Vendor:** Microsoft

**Exam Code:** MD-100

**Exam Name:** Windows 10

**Version:** DEMO

## QUESTION 1

### Case Study 1 - Fabrikam, Inc

#### Overview

#### Existing Environment

Fabrikam, Inc. is a distribution company that has 500 employees and 100 contractors.

#### Active Directory

The network contains an Active Directory forest named fabrikam.com. The forest is synced to Microsoft Azure Active Directory (Azure AD). All the employees are assigned Microsoft 365 E3 licenses.

The domain contains a user account for an employee named User10.

#### Client Computers

All the employees have computers that run Windows 10 Enterprise. All the computers are installed without Volume License Keys. Windows 10 license keys are never issued.

All the employees register their computer to Azure AD when they first receive the computer.

User10 has a computer named Computer10.

All the contractors have their own computer that runs Windows 10. None of the computers are joined to Azure AD.

You need to ensure that User10 can activate Computer10.

What should you do?

- A. Request that a Windows 10 Enterprise license be assigned to User10, and then activate Computer10.
- B. From the Microsoft Deployment Toolkit (MDT), add a Volume License Key to a task sequence, and then redeploy Computer10.
- C. From System Properties on Computer10, enter a Volume License Key, and then activate Computer10.
- D. Request that User10 perform a local AutoPilot Reset on Computer10, and then activate Computer10.

**Answer: D**

#### Explanation:

The case study states: User10 reports that Computer10 is not activated.

The solution is to perform a local AutoPilot Reset on the computer. This will restore the computer settings to a fully-configured or known IT-approved state. When

User10 signs in to the computer after the reset, the computer should activate.

You can use Autopilot Reset to remove personal files, apps, and settings from your devices. The devices remain enrolled in Intune and are returned to a fully- configured or known IT-approved state. You can Autopilot Reset a device locally or remotely from the Intune for Education portal.

Incorrect Answers:

A: All users have Microsoft 365 E3 licenses. This license includes Windows 10 Enterprise so we don't need to assign a Windows 10 Enterprise license to User10.

B: Volume License Keys aren't required.

C: Volume License Keys aren't required.

Reference:

<https://docs.microsoft.com/en-us/windows/deployment/windows-autopilot/windows-autopilot-requirements-licensing>

<https://docs.microsoft.com/en-us/intune-education/autopilot-reset>

## QUESTION 2

### Case Study 2 - Contoso, Ltd

#### Overview

Contoso, Ltd. is a consulting company that has a main office in Montreal and two branch offices in Seattle and New York.

Contoso has IT, human resources (HR), and finance departments.

Contoso recently opened a new branch office in San Diego. All the users in the San Diego office work from home.

#### Existing environment

Contoso uses Microsoft 365.

The on-premises network contains an Active Directory domain named contoso.com. The domain is synced to Microsoft Azure Active Directory (Azure AD).

All computers run Windows 10 Enterprise.

You have four computers named Computer1, Computer2, Computer3, and ComputerA.

ComputerA is in a workgroup on an isolated network segment and runs the Long Term Servicing Channel version of Windows 10. ComputerA connects to a manufacturing system and is business critical. All the other computers are joined to the domain and run the Semi-Annual Channel version of Windows 10.

You need to meet the technical requirements for EFS on ComputerA.

What should you do?

- A. Run certutil.exe, and then add a certificate to the local computer certificate store.
- B. Run cipher.exe, and then add a certificate to the local computer certificate store.
- C. Run cipher.exe, and then add a certificate to the local Group Policy.
- D. Run certutil.exe, and then add a certificate to the local Group Policy.

**Answer: C**

#### Explanation:

You run Cipher.exe to create the files, and then install the DRA via: Security Settings\Public Key Policies\Encrypting File System > Right-Click "Add Data Recovery Agent" In the Local Policy settings.

## QUESTION 3

### Case Study 3 - Litware, Inc

#### Overview

##### General Overview

Litware, Inc. is a consulting company that has a main office in Montreal and branch offices in Seattle and New York.

#### Environment

##### Existing Environment

The network contains an on-premises Active Directory domain named litware.com. The domain contains the computers shown in the following table.

Name	Operating system	Configuration	IP address
DC1	Windows Server 2019	Domain controller	192.168.10.1/24
Server1	Windows Server 2019	Domain-joined	192.168.10.11/24
Computer1	Windows 10	Domain-joined	192.168.10.20/24
Computer2	Windows 10	Domain-joined	192.168.10.21/24
Computer3	Windows 10	Workgroup	192.168.10.30/24

The network that uses 192.168.10.0/24 connects to the internet by using a Network Address Translation (NAT) device.

On Computer1, you need to configure the custom Visual Effects performance settings.

Which user accounts can you use?

- A. Admin1, User11, and User13 only
- B. Admin1 only
- C. Admin1, User11, User12, and User13
- D. Admin1, User11, and User12 only
- E. Admin1 and User 11 only

**Answer: C**

**Explanation:**

Domain admins and ANY LOCAL user are able to configure the custom Visual Effects performance settings. I Explain: if a normal user try using Control Panel or Settings App it will be prompted with admin credentials, BUT if you simply click Start and type: SystemPropertiesPerformance.exe it will open and you will be able to change settings.

#### QUESTION 4

You have a computer that runs Windows 10.

You need to identify the following information:

- The name, username, and SID of the computer
- The user groups to which your user account belongs

Which command should you run?

- A. whoami
- B. query
- C. msinfo32
- D. userinit

**Answer: A**

**Explanation:**

The whoami command displays the name of the current user, the security identifier (SID), and the group memberships for the current user. Additionally, the whoami /user command can be used to display the username and SID of the current user.

### QUESTION 5

You have 10 computers that run Windows 8.1 and have the following configurations:

- A single MBR disk
- A disabled TPM chip
- Disabled hardware virtualization
- UEFI firmware running in BIOS mode
- Enabled Data Execution Prevention (DEP)

You plan to upgrade the computers to Windows 10.  
You need to ensure that the computers can use Secure Boot.

Which two actions should you perform? Each correct answer presents part of the solution.

NOTE: Each correct selection is worth one point.

- A. Enable hardware virtualization.
- B. Disable DEP.
- C. Convert the MBR disk to a GPT disk.
- D. Enable the TPM chip.
- E. Convert the firmware from BIOS to UEFI.

**Answer:** CD

**Explanation:**

Secure Boot requires a UEFI firmware and a GPT disk. The TPM chip is also required to store Secure Boot keys. Enabling hardware virtualization and disabling DEP are not required to use Secure Boot. Converting the firmware from BIOS to UEFI is not required as the UEFI firmware is already running in BIOS mode.

### QUESTION 6

Your network contains an Active Directory domain and an intranet webpage named Intranet 1 that requires Internet Explorer 11.

You plan to deploy 100 Windows 10 devices that will be domain-joined and will use Microsoft Edge as their default browser.

You need to ensure that Internet Explorer 11 is used automatically to view Intranet1. All other webpages must be viewed by using Microsoft Edge.

Which Group Policy setting should you modify?

- A. Keep favorites in sync between Internet Explorer and Microsoft Edge
- B. Configure the Enterprise Mode Site List
- C. Allow Microsoft Compatibility Lists
- D. Configure Open Microsoft Edge With
- E. Send all intranet sites to Internet Explorer 11

**Answer:** B

**Explanation:**

Configure the Enterprise Mode Site List. This policy setting allows you to specify a list of websites that should be opened in Internet Explorer 11, even if the default browser is Microsoft Edge. This ensures that when users attempt to access Intranet 1, it will automatically open in Internet Explorer 11, while all other webpages will continue to be viewed using Microsoft Edge as the default browser.

### QUESTION 7

You have a computer that runs Windows 10 and contains a user named User1 and the following local Group Policy Objects (GPOs):

- Local Computer Policy
- Local Computer\User1 Policy
- Local Computer\Administrators Policy
- Local Computer\Non-Administrators Policy

You need to ensure that User1 must use a password that is at least 10 characters. Which GPO should you modify?

- A. Local Computer Policy
- B. Local Computer\Administrators Policy
- C. Local Computer \Non-Administrators Policy
- D. Local Computer\User1 Policy

**Answer:** A

**Explanation:**

It is available at LGPO > Computer Configuration > Windows Settings > Account Policies > Password Policies > Minimum password length policy.  
Remember that Computer Configuration is only available through LGPO.

### QUESTION 8

Hotspot Question

You have a computer that runs Windows 10 and contains two users named User1 and User2.

User1 needs to add a custom environment variable. The variable must be present when User2 signs in to the computer. The solution must use the principle of least privilege.

To which group should you add User1, and what should User1 use to add the environment variable? To answer, select the appropriate options in the answer area.

NOTE: Each correct selection is worth one point

Group:

Administrators
Device Owners
Power Users
System Managed Accounts Group

Use:

Computer Management
Device Manager
Security and Maintenance
System Properties

**Answer:**



**Explanation:**

To add a custom environment variable that is present when another user signs in to the computer, you should add User1 to the "Administrators" group, which has the necessary permissions to set system-wide environment variables. User1 can use the System Properties app to add the environment variable.

**QUESTION 9**

Your network contains an Active Directory domain. The domain contains 1,000 computers that run Windows 10.

You configure Microsoft Edge settings by using domain and local Group Policy Objects (GPOs). You need to generate a report that contains all the Microsoft Edge policy settings applied to a computer.

What should you do?

- A. From Microsoft Edge, open `edge://settings`.
- B. From a command prompt, run `scanstate` and specify the `/apps` parameter.
- C. From a command prompt, run `scanstate` and specify the `/genconfig` parameter.
- D. From a command prompt, run `gresult` and specify the `/H` parameter.

**Answer: D**

**Explanation:**

Gresult displays the Resultant Set of Policy (RSoP) information for a remote user and computer. To use RSoP reporting for remotely targeted computers through the firewall, you must have firewall rules that enable inbound network traffic on the ports.

Gresult [/x | /h] <filename> - Saves the report in either XML (/x) or HTML (/h) format at the location and with the file name that is specified by the filename parameter.

Incorrect:

\* `edge://settings` opens the Microsoft Edge settings page.

\* `scanstate /apps` - Scans the image for apps and includes them and their associated registry settings.

\* `scanstate /genconfig`

The Config.xml File

The Config.xml file is an optional file that you create using the `/genconfig` option with the ScanState command. You should create and modify this file if you want to exclude certain components from the migration. In addition, you must create and modify this file if you want to exclude any of the operating system settings from being migrated. The Config.xml file format is

different from that of the migration .xml files because it does not contain any migration rules. It contains only a list of the operating system components, applications, and the user documents that can be migrated.

Reference:

<https://docs.microsoft.com/en-us/windows-server/administration/windows-commands/gpresult>

#### QUESTION 10

Your network contains an on-premises Active Directory domain. The domain contains two computers named Computer1 and Computer2 that run Windows 10.

You install Windows Admin Center on Computer1.

You need to manage Computer2 from Computer1 by using Windows Admin Center.

What should you do on Computer2?

- A. Add an inbound Microsoft Defender Firewall rule.
- B. Allow Windows Remote Management (WinRM) through the Microsoft Defender firewall.
- C. Update the TrustedHosts list.
- D. Run the Enable-PSRemoting cmdlet.

**Answer: B**

#### Explanation:

When you access the Windows Admin Center platform and add a new computer (Windows PC) without any configuration yet, you will get the message as shown below. This confirms definitively that it is necessary to perform the configuration of the response in question.

Connecting to remote server (COMPUTER NAME) failed with the following error message:

WinRM cannot complete the operation. Verify that the specified computer name is valid, that the computer is accessible over the network, and that a firewall exception for the WinRM service is enabled and allows access from this computer. By default, the WinRM firewall exception for public profiles limits access to remote computers within the same local subnet.

#### QUESTION 11

You have Windows 10 devices that use custom device drivers.

You need to test new builds of Windows before the builds are made available to the general public. The solution must ensure that the builds are installed as soon as possible.

Which Windows readiness level should you configure?

- A. Preview Build -Slow
- B. Semi-Annual Channel
- C. Release Preview
- D. Preview Build -Fast

**Answer:**

#### Explanation:

People who join the free Windows Insider program receive regular updates, or builds, with the latest changes that Microsoft is planning for Windows 10. By working with these prerelease builds, insiders can share feedback with the company to help it fix bugs and smooth over the rough spots before an update hits the general public.

In the current model, Microsoft offers three rings: Fast, Slow, and Release Preview. The Fast ring is for Windows Insiders who want updates the fastest and are willing to put up with more bugs and glitches. The Slow ring is for those who'd rather wait for more stable updates. The Preview Release ring is the most stable of the three and is geared toward people who want to get an upcoming major Windows update before it's released to the public.

Reference:



<https://www.techrepublic.com/article/how-microsoft-is-changing-its-windows-insider-program>

### QUESTION 12

Hotspot Question

You have computers that run Windows 10.

You have users who report issues about computers as shown in the following table.

You need to resolve the issues as quickly as possible. The solution must minimize manual reconfigurations of the computers.

What should you do on each computer? To answer, select the appropriate options in the answer area.

NOTE: Each correct selection is worth one point.

#### Answer Area

Computer1:

<input type="checkbox"/>	Uninstall an update.
<input type="checkbox"/>	Restore from a system restore point.
<input type="checkbox"/>	Go back to a previous version of Windows 10.

Computer2:

<input type="checkbox"/>	Uninstall an update.
<input type="checkbox"/>	Restore from a system restore point.
<input type="checkbox"/>	Go back to a previous version of Windows 10.

Answer:

#### Answer Area

Computer1:

<input type="checkbox"/>	Uninstall an update.
<input checked="" type="checkbox"/>	Restore from a system restore point.
<input type="checkbox"/>	Go back to a previous version of Windows 10.

Computer2:

<input type="checkbox"/>	Uninstall an update.
<input type="checkbox"/>	Restore from a system restore point.
<input checked="" type="checkbox"/>	Go back to a previous version of Windows 10.

#### Explanation:

Box 1: Restore from a system restore point.

If your PC isn't working well and you recently installed an app. -> Restore from a system restore point

Box 2: Uninstall an update.

If your PC isn't working well and you recently installed an update. -> Remove an installed Windows update

Reference:

<https://support.microsoft.com/en-us/windows/recovery-options-in-windows-31ce2444-7de3-818c-d626-e3b5a3024da5>

### QUESTION 13

You have a computer that runs Windows 11 and has Windows Sandbox enabled. You need to create a custom Windows Sandbox configuration file.

Which file extension should you use?

- A. .ps
- B. .json
- C. .xml
- D. .wsb

**Answer: D**

#### Explanation:

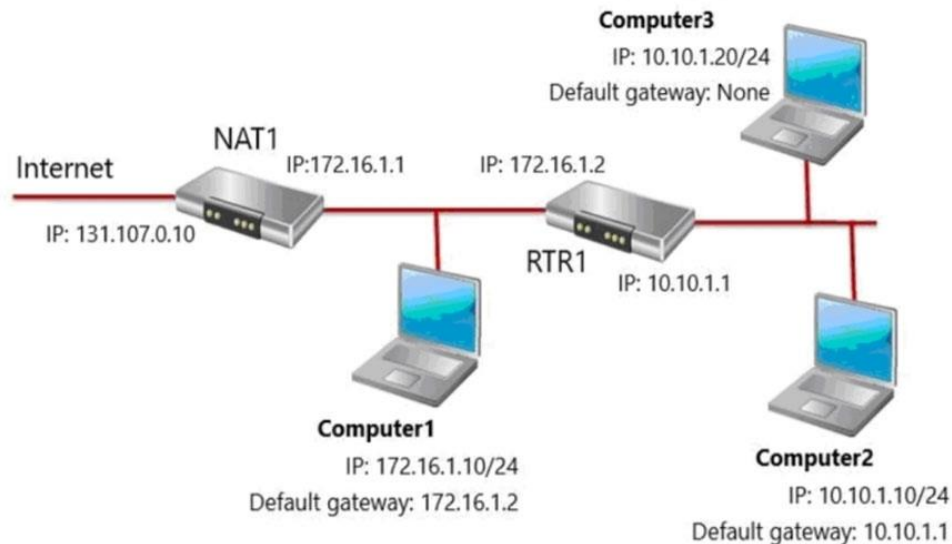
The Windows Sandbox configuration file uses the .wsb file extension. This file is an XML file that contains the configuration settings for the Sandbox. You can create a custom configuration file to customize the Sandbox environment to meet your specific needs, such as enabling or disabling networking, configuring shared folders, or specifying the amount of memory allocated to the Sandbox.

<https://learn.microsoft.com/en-us/windows/security/threat-protection/windows-sandbox/windows-sandbox-configure-using-wsb-file>

### QUESTION 14

Hotspot Question

You have the network shown in the following exhibit.



Computer1, Computer2, and Computer3 run Windows 10. Windows Defender Firewall is configured to allow ICMP traffic. RTR1 is a router.

For each of the following statements, select Yes if the statement is true. Otherwise, select No.  
NOTE: Each correct selection is worth one point.

**Answer Area**

Statements	Yes	No
If Computer1 pings the IP address of Computer2, Computer1 will receive a reply.	<input type="checkbox"/>	<input type="checkbox"/>
If Computer1 pings the IP address of Computer3, Computer1 will receive a reply.	<input type="checkbox"/>	<input type="checkbox"/>
If Computer2 pings the IP address of Computer3, Computer2 will receive a reply.	<input type="checkbox"/>	<input type="checkbox"/>

**Answer:**

**Answer Area**

Statements	Yes	No
If Computer1 pings the IP address of Computer2, Computer1 will receive a reply.	<input checked="" type="checkbox"/>	<input type="checkbox"/>
If Computer1 pings the IP address of Computer3, Computer1 will receive a reply.	<input type="checkbox"/>	<input checked="" type="checkbox"/>
If Computer2 pings the IP address of Computer3, Computer2 will receive a reply.	<input checked="" type="checkbox"/>	<input type="checkbox"/>

**Explanation:**

Box 1: Yes

Through RTR1 which has been configured as the default gateway for Computer1.

Box 2: No

From computer1 gets to computer3 via router1 but can't send reply since default gateway is not configured and sender is behind the router.

Box 3: Yes

From computer2 to computer3 works since they are not separated by a router, therefore default gateway must not be configured for this ping.

**QUESTION 15**

Your network contains an Active Directory domain. The domain contains computers that run

Windows 10.

All users use Roaming User Profiles.

You have a user named Public1 that is used to sign-in to a public computer.

You need to prevent changes to the user settings of Public1 from being saved to the user profile.

What should you do?

- A. Rename Ntuser.dat to Ntuser.v6.
- B. Rename the Roaming User Profile folder to Public 1.v1.
- C. Rename the Roaming User Profile folder to Public1.man.
- D. Rename Ntuser.dat to Ntuser.man.

**Answer: D**

**Explanation:**

User profiles become mandatory profiles when the administrator renames the NTuser.dat file (the registry hive) of each user's profile in the file system of the profile server from NTuser.dat to NTuser.man. The .man extension causes the user profile to be a read-only profile.

<https://learn.microsoft.com/en-us/windows/client-management/mandatory-user-profile#how-to-make-the-user-profile-mandatory>

#### QUESTION 16

**Note: This question is part of a series of questions that present the same scenario. Each question in the series contains a unique solution that might meet the stated goals. Some question sets might have more than one correct solution, while others might not have a correct solution.**

**After you answer a question in this section, you will NOT be able to return to it. As a result, these questions will not appear in the review screen.**

You have a computer that runs Windows 10. The computer contains a folder named D:\Scripts. D:\Scripts contains several PowerShell scripts.

You need to ensure that you can run the PowerShell scripts without specifying the full path to the scripts. The solution must persist between PowerShell sessions.

Solution: From System Properties, you add D:\Scripts to the PATH environment variable.

Does this meet the goal?

- A. Yes
- B. No

**Answer: A**

**Explanation:**

The PATH environment variable is a system variable that contains a list of directories where the operating system looks for executable files. By adding D:\Scripts to the PATH environment variable, you can run PowerShell scripts in that directory without specifying the full path to the scripts.

#### QUESTION 17

You install Windows 10 Pro on a computer named CLIENT1.

You need to ensure that all per-user services are disabled on CLIENT1. The solution must minimize administrative effort.

What should you use?

- A. the sc command
- B. Task Manager
- C. Services
- D. the sfc command

**Answer: A**

**Explanation:**

You can create a script to change the Startup Type for the per-user services. Then use Group Policy or another management solution to deploy the script in your environment.

Use a script to manage per-user services:

<https://learn.microsoft.com/en-us/windows/application-management/per-user-services-in-windows#use-a-script-to-manage-per-user-services>

### QUESTION 18

You have a computer that runs Windows 10.

You need to view the Windows Update diagnostic log.

What should you do first?

- A. From File Explorer, go to the C:\Windows\Logs\WindowsUpdate folder and select **Show hidden files, folders, and drives**.
- B. From Windows Update in the Settings app, configure Advanced options.
- C. From Event Viewer, modify the properties of the WindowsUpdateClient operational log.
- D. From Windows PowerShell, run the `Get-WindowsUpdateLog` cmdlet.

**Answer: D**

**Explanation:**

To merge and convert Windows Update trace files (.etl files) into a single readable WindowsUpdate.log file, see `Get-WindowsUpdateLog`.

<https://docs.microsoft.com/en-us/powershell/module/windowsupdate/get-windowsupdate-log?view=windowsserver2022-ps>

### QUESTION 19

Your company has a branch office that contains 25 workgroup computers. The computers run Windows 10 Pro.

Users report that they cannot see other computers from Network in File Explorer.

What should you do to resolve the issue?

- A. Set Network profile to Private.
- B. Turn off random hardware addresses for the network connection.
- C. Set Network profile to Public.
- D. Configure the network connection as a metered connection.

**Answer: A**

**Explanation:**

When the device profile was set to Private I could see my other client via File Explorer- >Network.  
When it was on set to public, there was no client visible.  
Public: your device is not discoverable.  
Private: your device is discoverable on the network

### QUESTION 20

Your company has an on-premises network that contains an Active Directory domain. The domain is synced to Microsoft Azure Active Directory (Azure AD). All computers in the domain run Windows 10 Enterprise.

You are logged on as the local administrator on a Computer named Computer1.

A user named Mia Hamm has a computer named Computer2. Mia Hamm reports that she is experiencing problems with Computer2.

You want to use Event Viewer on Computer1 to view the event logs on Computer2.

What should you do?

- A. On Computer1, run the Connect-WSMan -ComputerName "Computer1" cmdlet.
- B. On Computer1, run the Get-Eventlog -List -ComputerName "Computer1" cmdlet.
- C. On Computer1, log on as a domain administrator, then open Event Viewer and select the Connect to another computer ... option.
- D. On Computer1, open the Windows Defender Firewall and enable the Remote Event Log Management inbound rule.

**Answer: C**

#### Explanation:

You are logged on as a local administrator. You need the required permissions to access Event Viewer logs on all remote Windows computers.

Reference:

<https://docs.microsoft.com/en-us/windows/win32/winrm/about-windows-remote-management>

### QUESTION 21

You have a computer named Computer1. Computer1 runs Windows 10 Pro.

Computer1 is experiencing connectivity issues.

You need to view the IP addresses of any remote computer that Computer1 has an active TCP connection to.

Should you do?

- A. In Windows Administrative Tools, open Performance Monitor.
- B. In the Control Panel, open Network and Internet. Then select Network and Sharing Center.
- C. In Windows Administrative Tools, open Resource Monitor.
- D. In the Setting app, open Update and Security. Then open Windows Security and select Firewall and Network protection.

**Answer: C**

#### Explanation:

Open the Resource Monitor --> Network tab --> TCP Connections --> Remote Address.

## Thank You for Trying Our Product

### Braindump2go Certification Exam Features:

- ★ More than **99,900** Satisfied Customers Worldwide.
- ★ Average **99.9%** Success Rate.
- ★ **Free Update** to match latest and real exam scenarios.
- ★ **Instant Download** Access! No Setup required.
- ★ Questions & Answers are downloadable in **PDF** format and **VCE** test engine format.
- ★ Multi-Platform capabilities - **Windows, Laptop, Mac, Android, iPhone, iPod, iPad**.
- ★ **100%** Guaranteed Success or **100%** Money Back Guarantee.
- ★ **Fast**, helpful support **24x7**.



View list of all certification exams: <http://www.braindump2go.com/all-products.html>



Microsoft



ORACLE



JUNIPER  
NETWORKS



EMC<sup>2</sup>  
where information lives

**10% Discount Coupon Code: ASTR14**