



Vendor: Juniper

Exam Code: JN0-348

Exam Name: Enterprise Routing and Switching, Specialist
(JNCIS-ENT)

Version: DEMO

QUESTION 1

Referring to the exhibit, what is the problem?

```
user@switch> show interfaces ae0
error: device ae0 not found

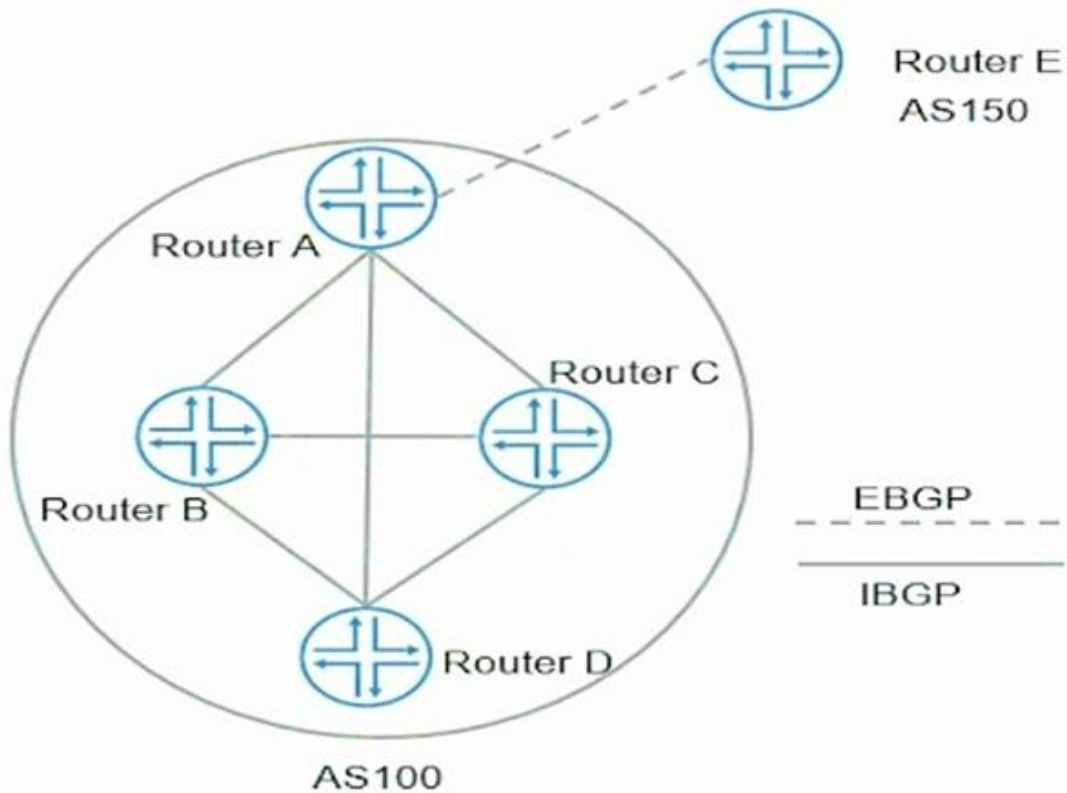
user@switch> show configuration
...
chassis {
    nssu;
}
interfaces {
    ge-0/0/3 {
        ether-options {
            802.3ad ae0;
        }
    }
    ge-1/0/4 {
        ether-options {
            802.3ad ae0;
        }
    }
}
ae0 {
    unit 0 {
        family ethernet-switching {
            vlan {
                members default;
            }
        }
    }
}
vlangs {
    default {
        vlan-id 1;
    }
}
```

- A. The LAG member interfaces are configured across different line cards
- B. LAG requires more than two member links
- C. LACP is required for LAG to work
- D. Aggregated interfaces must be defined under the chassis stanza

Answer: D

QUESTION 2

Referring to the exhibit, which two statements are correct? (Choose two.)



- A. Router A does not send routes learned from Router E to Router B, Router C, and Router D
- B. Router A sends routes learned from Router E to Router B, Router C, and Router D
- C. Router A sends routes learned from Router D to Router B and Router C
- D. Router A does not send routes learned from Router D to Router B and Router C

Answer: BD

QUESTION 3

Which statement is correct about the ISO NET address shown in the exhibit?

```
[edit]
user@router# show interfaces
...
lo0 {
    unit 0 {
        family inet {
            address 1.1.1.1/32;
        }
        family iso {
            address 49.0001.1921.6800.1001.00;
        }
    }
}
```

- A. The system identifier is 6800.1001.00
- B. The area identifier is 0001
- C. The authority and format identifier (AFI) is 00
- D. This is not a valid NET address

Answer: B

QUESTION 4

Which statement is true about the configuration shown in the exhibit?

```
[edit protocols bgp]
user@router# show
import add-community;
export next-hop-self;
group ISPs {
    type external;
    import local-pref;
    export adv-aggregate;
    neighbor 172.30.1.1 {
        peer-as 65100;
    }
    neighbor 172.30.2.1 {
        export adv-custom;
        peer-as 65200;
    }
}
group Internal-Peers {
    type internal;
    neighbor 192.168.110.10;
    neighbor 192.168.110.20;
}
```

- A. Only the local-pref import policy will be evaluated when routes are learned from neighbor 172.30.1.1
- B. Only the add-community import policy will be evaluated when routes are learned from neighbor 172.30.1.1
- C. No import policy will be evaluated when routes are learned from neighbor 172.30.2.1
- D. Both the add-community and local-pref import policies will be evaluated when routes are learned from neighbor 172.30.2.1

Answer: D

Thank You for Trying Our Product

Braindump2go Certification Exam Features:

- ★ More than **99,900** Satisfied Customers Worldwide.
- ★ Average **99.9%** Success Rate.
- ★ **Free Update** to match latest and real exam scenarios.
- ★ **Instant Download** Access! No Setup required.
- ★ Questions & Answers are downloadable in **PDF** format and **VCE** test engine format.
- ★ Multi-Platform capabilities - **Windows, Laptop, Mac, Android, iPhone, iPod, iPad**.
- ★ **100%** Guaranteed Success or **100%** Money Back Guarantee.
- ★ **Fast**, helpful support **24x7**.



View list of all certification exams: <http://www.braindump2go.com/all-products.html>



Microsoft



ORACLE



JUNIPER
NETWORKS



EMC²
where information lives[®]

10% Discount Coupon Code: BDN2014