



Vendor: Juniper

Exam Code: JN0-1301

Exam Name: Data Center Design, Specialist (JNCDS-DC)

Version: DEMO

QUESTION 1

You are creating a design proposal and deciding whether to use 10 GbE copper or 10GbE fiber cabling to connect your ToR switches to the servers.

Which statement is correct regarding this scenario?

- A. Fiber has a lower power consumption on a per-port basis.
- B. Copper cabling requires special transceivers for different speeds.
- C. Fiber is much cheaper to purchase but has a higher long-term cost.
- D. Copper will allow you to reach the greatest distance between devices.

Answer: A

QUESTION 2

What are two Layer 2 traffic tunneling schemes that are supported in a Juniper Networks IP fabric? (Choose two.)

- A. EVPN
- B. MPLSoGRE
- C. GENEVE
- D. VXLAN

Answer: AD

QUESTION 3

A customer has selected QFX5110 switches. The initial installation will contain two switches located in racks about two meters apart.

What is the most cost-effective way to interconnect these switches?

- A. Use SMF between the racks and interconnect the switches with LX4 transceivers.
- B. Use a Virtual Chassis cable between the VCP cards.
- C. Use MMF between the racks and interconnect the switches with SR4 transceivers.
- D. Use a three-meter passive DAC cable between the racks and interconnect the switches with it.

Answer: D

QUESTION 4

Which two statements are true about IP fabrics? (Choose two.)

- A. IP-based applications do not require an overlay network to maintain connectivity.
- B. Applications that require security needs an overlay to provide the security.
- C. Applications that require Layer 2 adjacencies require an overlay network to maintain connectivity.
- D. IP fabrics can natively support both Layer 2 and Layer 3 applications.

Answer: CD

QUESTION 5

Clos architectures are based on which network topology?

- A. ring
- B. VLANs
- C. hybrid
- D. spine and leaf

Answer: D

QUESTION 6

What are two methods used to protect the data center perimeter? (Choose two.)

- A. session authentication
- B. DDoS protection
- C. asset classification
- D. network subnetting

Answer: AB

QUESTION 7

What are two requirements for a VXLAN tunnel endpoint (VTEP)? (Choose two.)

- A. TCP session tracking
- B. MAC address learning
- C. IGMP filtering
- D. IP address learning of interested VTEPs

Answer: BD

QUESTION 8

You are designing a Layer 2 fabric implementation for a small data center and have chosen to implement a Virtual Chassis Fabric. You must accommodate two racks of servers with 1 Gbps connectivity, 10 racks of servers with 10 Gbps connectivity, and maintain a single management interface.

Which device would satisfy the requirements in this implementation?

- A. QFX5110
- B. QFX10002
- C. EX4600
- D. EX4300

Answer: A

QUESTION 9

You are implementing a new financial application in your data center. You must ensure Web traffic to this server is secure.

Which Junos feature would you use to accomplish this task?

- A. graceful restart

- B. antispam
- C. AppSecure
- D. Virtual Chassis

Answer: C

QUESTION 10

Your data center uses a Virtual Chassis Fabric. The ToR switches have 48 ports and each rack supports 20 servers. Each server has two ports that are configured as a LAG.

You need to implement link level redundancy but you cannot use two ports on the same device for this redundancy.

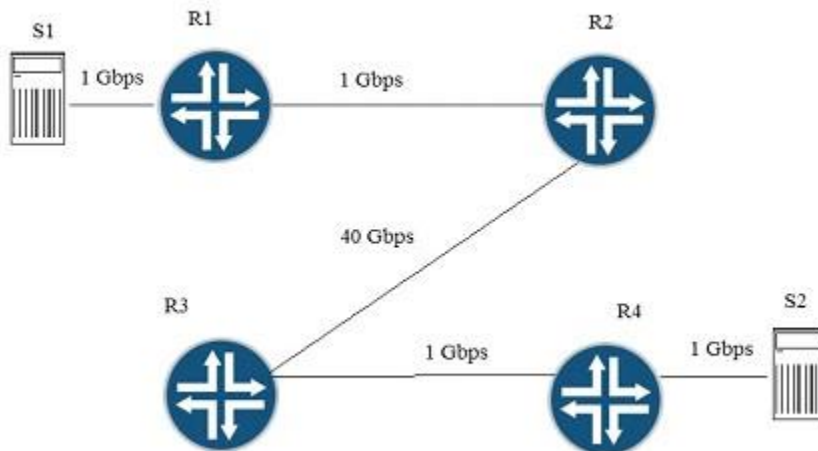
Which type of connection should you use to complete this task?

- A. MC-LAG
- B. RTG
- C. LAG
- D. ESI

Answer: C

QUESTION 11

Click the Exhibit button. Traffic congestion is noticed when sending traffic from S1 to S2. You must design a CoS deployment to address the traffic congestion issue. Referring to the exhibit, which two statements are true? (Choose two.)



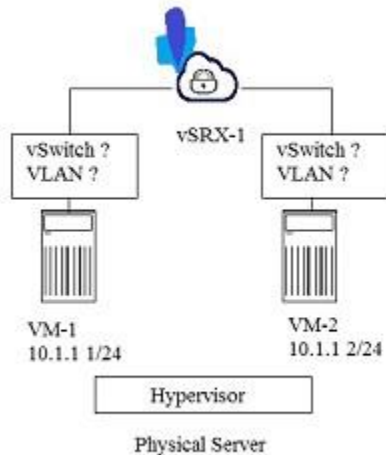
- A. You should use BA classifiers on R1.
- B. You should use multifield classifiers on R2, R3, and R4.
- C. You should use multifield classifiers on R1.
- D. You should use BA classifiers on R2, R3, and R4.

Answer: AB

QUESTION 12

Click the Exhibit button. Referring to the exhibit, you want the vSRX device to inspect inter-VM traffic.

Which two actions must you take to accomplish this task? (Choose two.)



- A. You must put the connections between the VMs and the vSRX device in separate VLANs.
- B. You must put the connections between the VMs and the vSRX device in separate vSwitches.
- C. You must put the connection between the VMs and the vSRX device in the same VLAN.
- D. You must put the connection between the VMs and the vSRX device in the same vSwitch.

Answer: AB

QUESTION 14

A large multinational corporation wants to implement SDN for rapid deployment of application environments.

You are asked to define SDN service chaining for a presentation to executive management.

In this scenario, which statement would satisfy the requirement?

- A. Integrated software is used to insert a software widget into the flow of network traffic.
- B. Stacked hardware is used to insert a software widget into the flow of network traffic.
- C. Software is used to virtually insert services into the flow of network traffic.
- D. Hardware is used to virtually insert services into the flow of network traffic.

Answer: C

Thank You for Trying Our Product

Lead2pass Certification Exam Features:

- ★ More than **99,900** Satisfied Customers Worldwide.
- ★ Average **99.9%** Success Rate.
- ★ **Free Update** to match latest and real exam scenarios.
- ★ **Instant Download** Access! No Setup required.
- ★ Questions & Answers are downloadable in **PDF** format and **VCE** test engine format.
- ★ Multi-Platform capabilities - **Windows, Laptop, Mac, Android, iPhone, iPod, iPad**.
- ★ **100%** Guaranteed Success or **100%** Money Back Guarantee.
- ★ **Fast**, helpful support **24x7**.



View list of all certification exams: <http://www.lead2pass.com/all-products.html>



10% Discount Coupon Code: ASTR14