

# **Dell EMC**

## **DES-5121 Exam**

**Dell EMC Specialist - Implementation Engineer Campus  
Networking Exam**

---

**Question: 1**

---

If a VRRP Master router is rebooted, what is the default behavior once it comes back online?

- A. An election occurs to determine which router will have the Master role
- B. Original VRRP Master will take back control of the Master role
- C. Original VRRP Backup will retain the Master role
- D. VRRP Master role is determined by the router with the lowest MAC address

---

**Answer: B**

---

---

**Question: 2**

---

If a group of routers are running VRRP with a virtual router ID of 155, which MAC address will be used to respond to the ARP requests for the virtual IP?

- A. 0000-5E00-0155
- B. 0000-5E00-019B
- C. 0001-5500-005E
- D. 0001-9B00-005E

---

**Answer: B**

---

---

**Question: 3**

---

An administrator just finished configuring a Dell EMC N-Series switch. After rebooting the switch, the administrator notices that all the configuration settings just entered are gone. Which command did the administrator fail to enter?

- A. Copy running-config startup-config
- B. Copy running-config backup-config
- C. Copy startup-config backup-config
- D. Copy startup-config running-config

---

**Answer: A**

---

---

**Question: 4**

---

When configuring a PBR route-map, what are the configurable "SET" options?

- A. set ip source, set ip next-hop, and set ip default next-hop
- B. set ip next-hop, set ip source, and set ip precedence
- C. set ip next-hop, set ip default next-hop, and set ip precedence
- D. set ip source, set ip default next-hop and set ip precedence

---

**Answer: C**

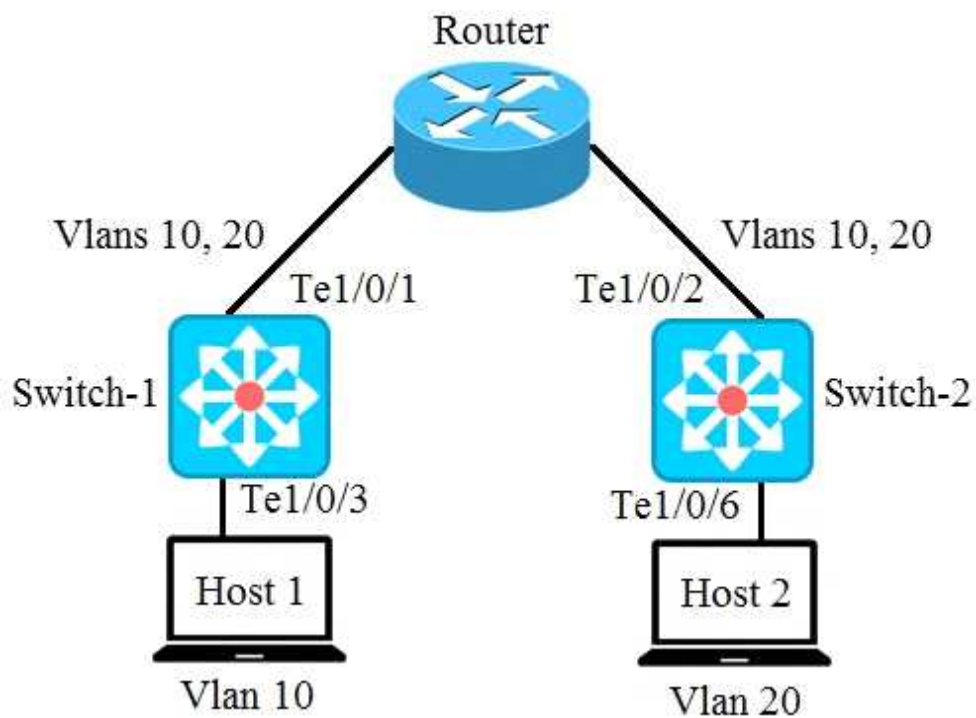
---

---

**Question: 5**

---

```
Switch-1(config)# interface tengigabitethernet 1/0/1
Switch-1(config)# switchport mode access
Switch-1(config)# switchport trunk allowed vlan 10, 20
Switch-1(config)#
Switch-1(config)# interface tengigabitethernet 1/0/3
Switch-1(config)# switchport mode access
Switch-1(config)# switchport access vlan 10
Switch-2(config)# interface tengigabitethernet 1/0/2
Switch-2(config)# switchport mode trunk
Switch-2(config)# switchport trunk allowed vlan 10, 20
Switch-2(config)#
Switch-2(config)# interface tengigabitethernet 1/0/6
Switch-2(config)# switchport mode access
Switch-2(config)# switchport access vlan 20
```



A network administrator is troubleshooting why Host 1 cannot communicate with Host 2. Based on the switch output shown in the exhibit, what is the reason for the communication issue?

- A. Port Te1/0/1 on Switch-1 is configured incorrectly
- B. Port Te1/0/2 on Switch-2 is configured incorrectly
- C. Port Te1/0/3 for Host 1 is configured incorrectly on Switch-1
- D. Port Te1/0/6 for Host 2 is configured incorrectly on Switch-2

---

**Answer: A**

---