



Vendor: EMC

Exam Code: E20-532

Exam Name: Storage Area Network (SAN) Specialist Exam
for Storage Administrators

Version: DEMO

QUESTION 1

How many buffer-to-buffer (BB) credits can be used on ports 4-23 in a DS-24M2 switch?

- A. 5
- B. 12
- C. 24
- D. 60

Answer: A

QUESTION 2

Which native command on a B-series switch will provide data for EMC Customer Service?

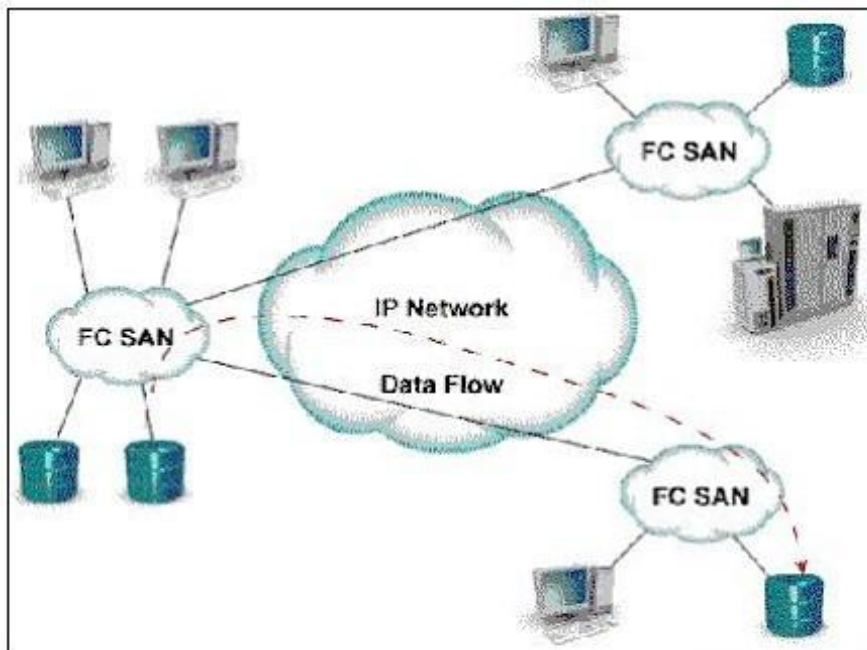
- A. showtech
- B. supportshow
- C. supportlogs
- D. switchsupport

Answer: B

QUESTION 3

Click the Exhibit button.

What is represented by data flow in the picture?



- A. FCIP representation of remote DR
- B. ISCSI representation of remote DR
- C. FCIP representation of remote backup
- D. ISCSI representation of remote backup

Answer: A

QUESTION 4

A new HBA is added to a Sun Solaris host. After a reconfiguration reboot, the new HBA is logged into the FA port on the Symmetrix, but it cannot see any devices. Which two [2] must be verified?

- A. Correct HBA WWN and FA association exists in the VCMDB
- B. LUN number conversion from hexadecimal to decimal in the sd.conf file
- C. LUN number conversion from decimal to hexadecimal in the sd.conf file
- D. LUN number conversion from hexadecimal to decimal in HBA driver configuration file on the host

Answer: AB

QUESTION 5

How many buffer-to-buffer (BB) credits can be allocated to a port on a Brocade DS16-B2 (Brocade 3x00) series switch?

- A. 27
- B. 54
- C. 64
- D. 108

Answer: D

QUESTION 6

Which statement about the MDS 9000 32-port switch module is correct?

- A. Can support 16 ISLs
- B. Has a non-blocking architecture
- C. Shares 2Gb bandwidth among four ports
- D. Has more bandwidth than the 16 port module

Answer: C

QUESTION 7

What is the difference between the native long-wave Fibre Channel distance that EMC supports vs. what Brocade supports?

- A. EMC: 10 km, Brocade: 35 km
- B. EMC: 20 km, Brocade: 10 km
- C. EMC: 35 km, Brocade: 15 km
- D. EMC: 35 km, Brocade: 80 km

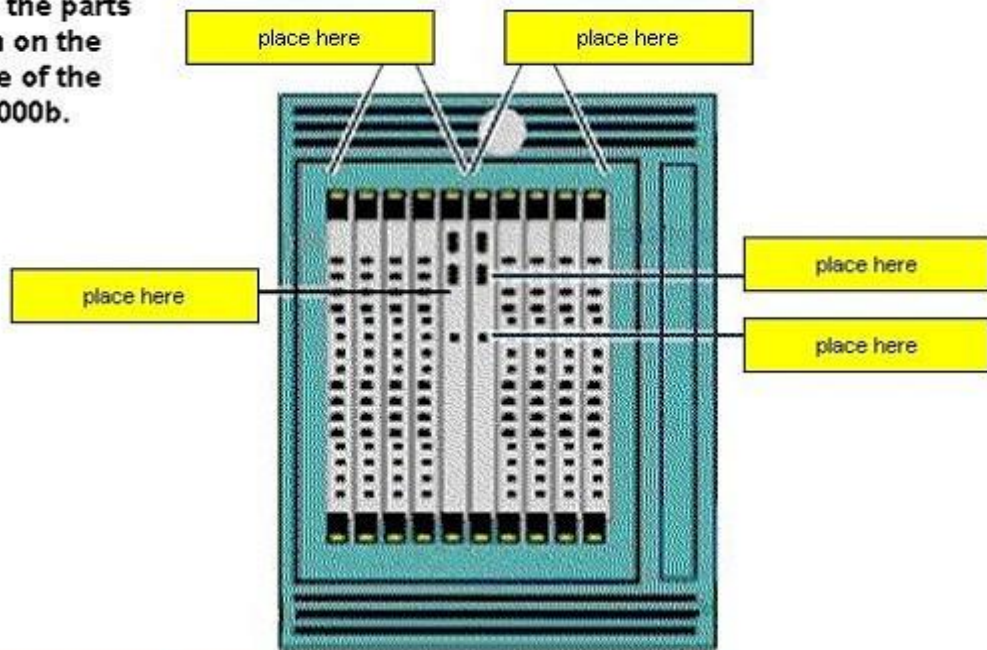
Answer: D

QUESTION 8

Drag and Drop Question

Click the Task button. Match the parts shown on the picture of the ED-12000b.

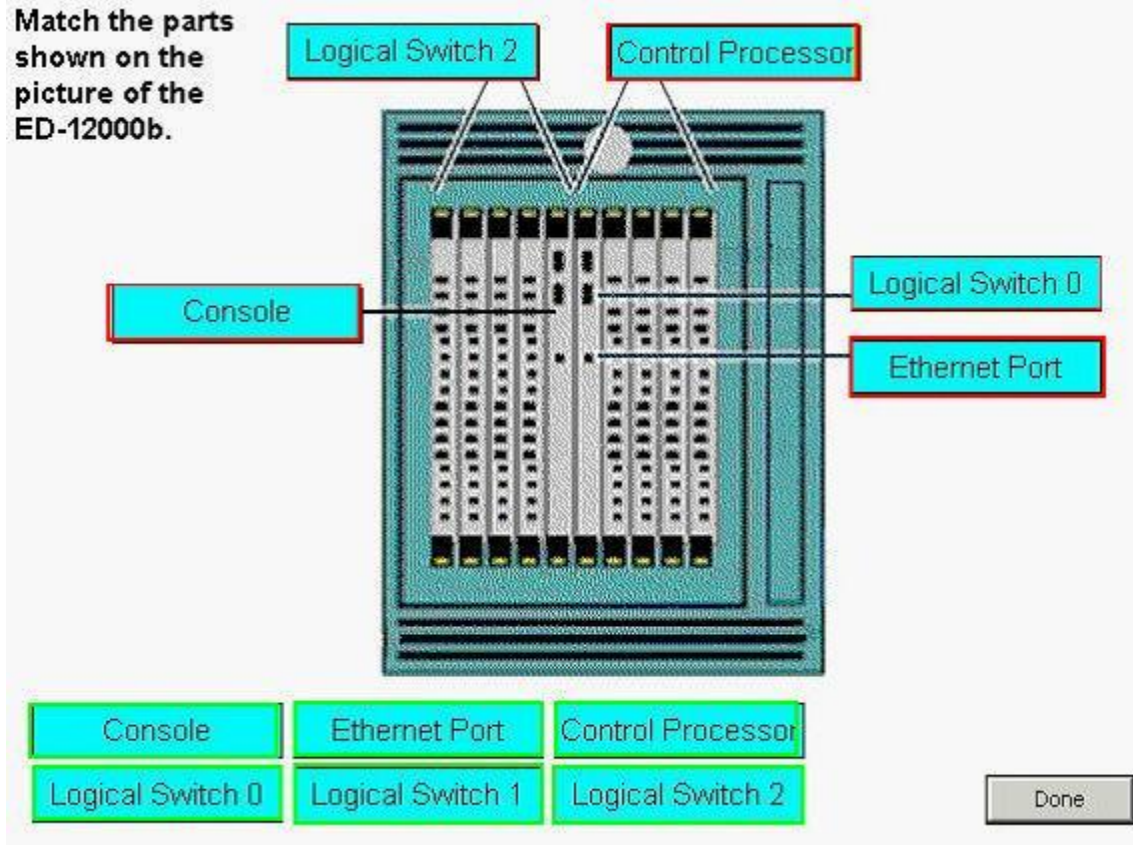
Match the parts shown on the picture of the ED-12000b.



- Console
- Ethernet Port
- Control Processor
- Logical Switch 0
- Logical Switch 1
- Logical Switch 2

Done

Answer:



QUESTION 9

Which three (3) are valid types of persistent bindings?

- A. S_ID
- B. D_ID
- C. WWNN
- D. WWPN

Answer: BCD

QUESTION 10

What does EMC VisualSAN 4.0 use to gather Brocade Switch information?

- A. SNMP
- B. Webtools
- C. SCSI INQ
- D. Navisphere CLI

Answer: A

Thank You for Trying Our Product

Braindump2go Certification Exam Features:

- ★ More than **99,900** Satisfied Customers Worldwide.
- ★ Average **99.9%** Success Rate.
- ★ **Free Update** to match latest and real exam scenarios.
- ★ **Instant Download** Access! No Setup required.
- ★ Questions & Answers are downloadable in **PDF** format and **VCE** test engine format.
- ★ Multi-Platform capabilities - **Windows, Laptop, Mac, Android, iPhone, iPod, iPad.**
- ★ **100%** Guaranteed Success or **100%** Money Back Guarantee.
- ★ **Fast**, helpful support **24x7**.



View list of all certification exams: <http://www.braindump2go.com/all-products.html>



Microsoft



ORACLE



CITRIX



JUNIPER
NETWORKS



EMC²
where information lives[®]

10% Discount Coupon Code: BDNT2014