

➤ **Vendor: Cisco**

➤ **Exam Code: 010-151**

➤ **Exam Name: Supporting Cisco Data Center System Devices**

➤ **New Updated Questions from [Braindump2go](#)**

➤ **(Updated in [November/2022](#))**

[Visit Braindump2go and Download Full Version 010-151 Exam Dumps](#)

QUESTION 1

Which three statements about FCoE are true? (Choose three.)

- A. Allows Fibre Channel and Ethernet networks to share a single, integrated infrastructure.
- B. Encapsulates Fibre Channel frames into Ethernet frames, which allows them to run alongside traditional IP traffic.
- C. Increases capital costs due to the difficulty to manage.
- D. Consolidates I/O traffic in the data center.

Answer: ABD

QUESTION 2

Which cable is used to access the command-line interface of a Cisco UCS 6120XP Fabric Interconnects?

- A. KVM cable
- B. console cable
- C. Ethernet cable
- D. SFP+ Ethernet transceiver cable

Answer: B

QUESTION 3

Where do you find the model number of a Cisco MDS 9200 Series chassis?

- A. on the top front of the chassis next to the serial number
- B. on the bottom front of the chassis next to the Cisco logo
- C. on the top front of the chassis next to the Cisco logo
- D. on the bottom front of the chassis next to the serial number

Answer: C

QUESTION 4

How do you find the serial number of a Cisco UCS 5108 Blade Server chassis?

- A. Use the Cisco UCS Admin.
- B. Use the Cisco UCS Application.
- C. Use the Cisco UCS Assistant.

[010-151 Exam Dumps](#) [010-151 Exam Questions](#) [010-151 PDF Dumps](#) [010-151 VCE Dumps](#)

<https://www.braindump2go.com/010-151.html>

D. Use the Cisco UCS Manager.

Answer: D

QUESTION 5

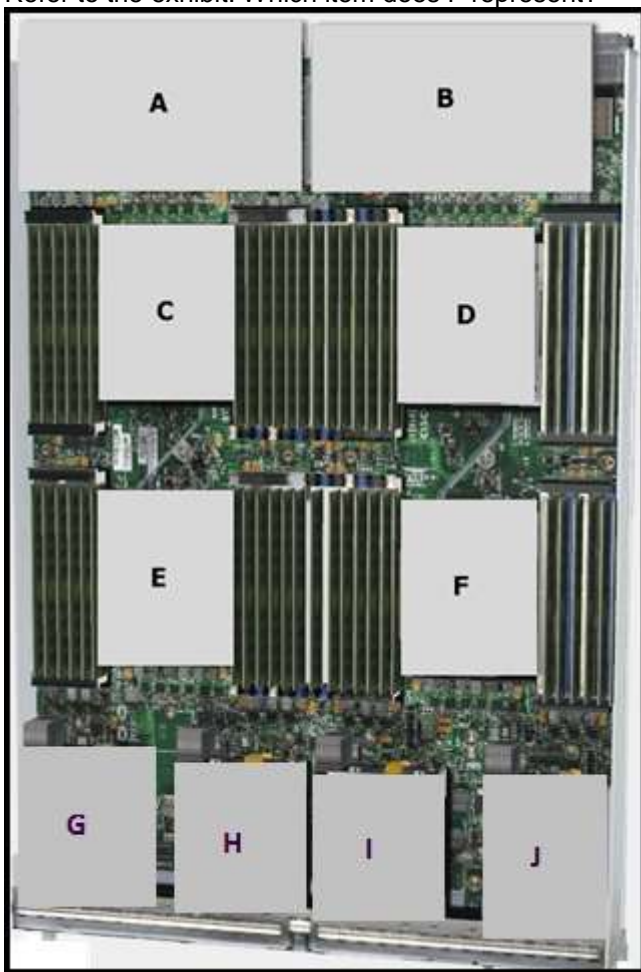
What does the system status LED look like when an over temperature or major alarm occurs on the Cisco UCS 6120XP Fabric Interconnect?

- A. Amber
- B. Red
- C. Blinking amber
- D. Blinking red

Answer: C

QUESTION 6

Refer to the exhibit. Which item does F represent?

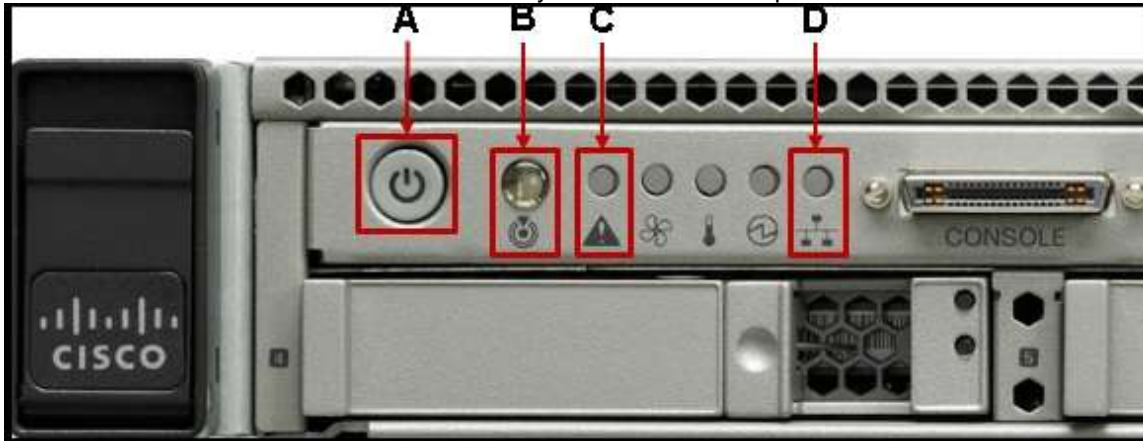


- A. HDD 1
- B. TFP Module
- C. SuperCap Module
- D. CPU 2
- E. CMOS Battery

Answer: D

QUESTION 7

Refer to the exhibit. Which statement correctly identifies the front panel LEDs on the Cisco UCS C220 Server?



- A. A is power button and power status LED;
B is identification button and LED;
C is system status LED;
D is network link activity LED.
- B. A is network link activity LED;
B is system status LED;
C is power button and power status LED;
D is identification button and LED.
- C. A is system status LED;
B is network link activity LED;
C is power button and power status LED;
D is identification button and LED.
- D. A is network link activity LED;
B is system status LED;
C is identification button and LED;
D is power button and power status LED.

Answer: A

QUESTION 8

Which processor option is supported in the Cisco UCS C420 M3 Server?

- A. up to two Intel Xeon E5-4600 series multicore processors
- B. up to two Intel Xeon E7-4800 series multicore processors
- C. up to four Intel Xeon E5-4600 series multicore processors
- D. two or four Intel Xeon E7-8800 series multicore processors

Answer: C

QUESTION 9

Which two major components does a Cisco Nexus 1000V Series Switch have? (Choose two.)

- A. Virtual Fiber Channel Module
- B. Virtual Ethernet Module
- C. Virtual Supervisor Module
- D. Virtual Memory Controller Module
- E. Virtual Network Module

Answer: BC

QUESTION 10

Which Cisco Nexus 5000 Series model supports 1/10G BASE-T ports?

- A. Cisco Nexus 5548P
- B. Cisco Nexus 5548UP
- C. Cisco Nexus 5596UP
- D. Cisco Nexus 5596T

Answer: D

QUESTION 11

Which Cisco MDS model supports the most Fibre Channel ports per chassis?

- A. MDS 9513
- B. MDS 9509
- C. MDS 9506
- D. MDS 9250i

Answer: A

QUESTION 12

Refer to the exhibit. Which Cisco MDS chassis supports the 48-Port 16-Gbps Fibre Channel Switching Module?



- A. MDS 9509
- B. MDS 9513
- C. MDS 9710
- D. MDS 9506

Answer: C

QUESTION 13

Refer to the exhibit. What is the name of this rack-mount server?



- A. Cisco UCS C220 Rack-Mount Server
- B. Cisco UCS C240 Rack-Mount Server
- C. Cisco UCS C420 Rack-Mount Server
- D. Cisco UCS C460 Rack-Mount Server

Answer: C

QUESTION 14

Which supervisor module is supported by a Cisco Nexus 7700 Series Switch?

- A. first-generation supervisor module
- B. second-generation supervisor module (Sup2)
- C. second-generation supervisor enhanced module (Sup2E)
- D. third-generation supervisor enhanced module (Sup3E)

Answer: C

QUESTION 15

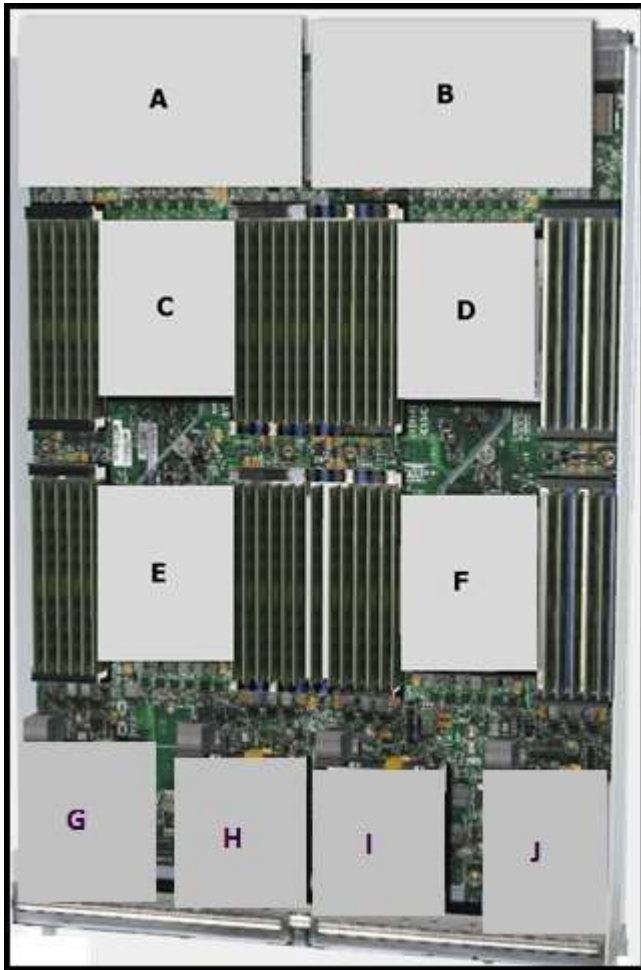
Which type of optics module is supported by a 12-port 100 GE Cisco Nexus 7700 F3 Series I/O module?

- A. CPAK
- B. QSFP+
- C. SFP/SFP+
- D. CFP

Answer: A

QUESTION 16

Refer to the exhibit. Which item does A represent?

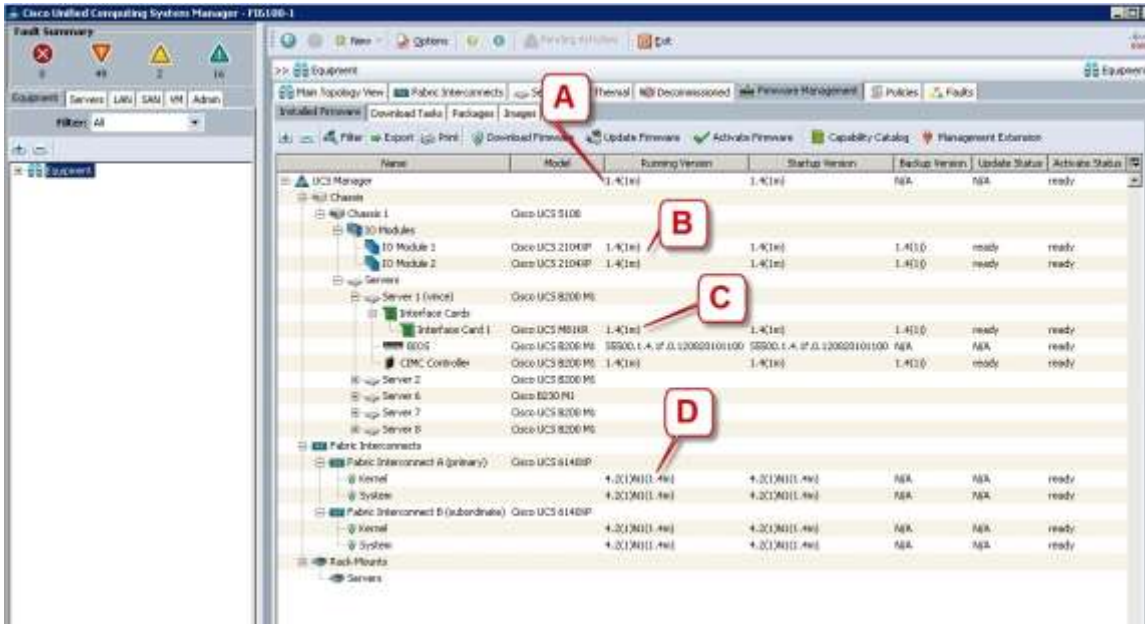


- A. Emulex Adapter Card for Cisco UCS B420 M3 Blade Servers
- B. Virtual Interface Card for Cisco UCS B420 M3 Blade Servers
- C. mLOM for Cisco UCS B420 M3 Blade Servers
- D. Virtual Emulex Adapter Card for Cisco UCS B420 M3 Blade Servers
- E. SuperCap module for Cisco UCS B420 M3 Blade Servers

Answer: C

QUESTION 17

Refer to the exhibit. Which call-out accurately shows the current running version of the Cisco UCS Manager management software?



- A. A - UCS Manager running version 1.4(1m)
- B. B - IO Module 1 running version 1.4(1m)
- C. C - Interface Card 1 running version 1.4(1m)
- D. D - Kernel running version 4.2(1)N(1.4m)

Answer: A

QUESTION 18

Which command-line interface mode is best described by this prompt?

UCS-switch-A (nxos) #

- A. maintenance mode
- B. EXEC mode
- C. local management mode
- D. global configuration mode
- E. Cisco IOS mode

Answer: B

QUESTION 19

Which command can be used to exit to EXEC mode from this current mode?

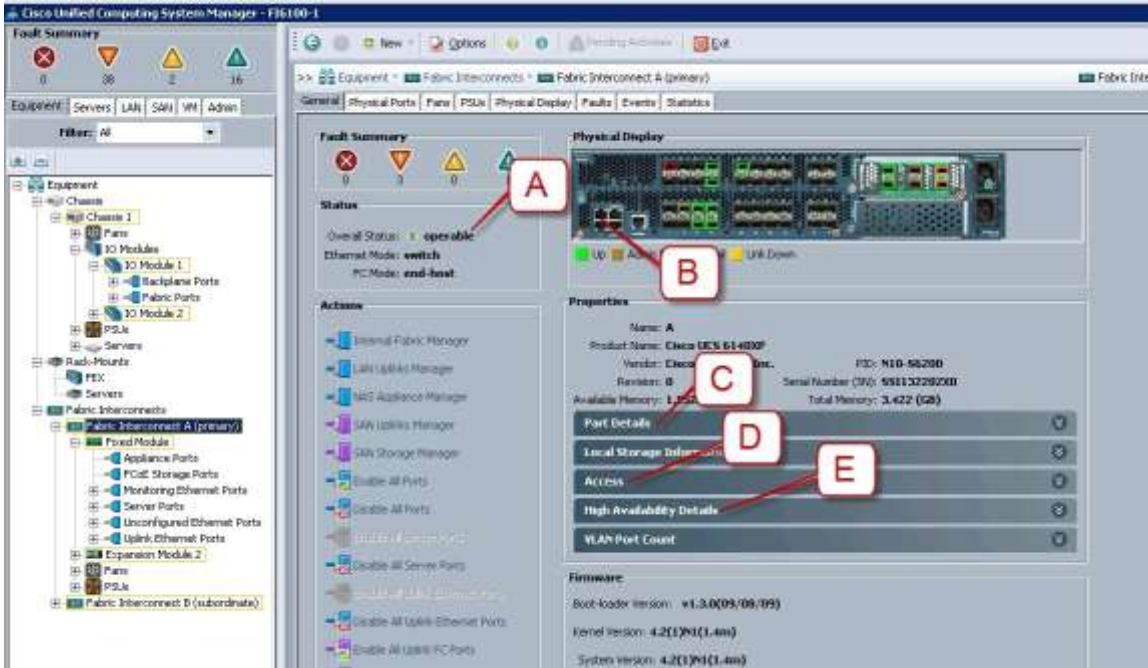
switch(config-if) #

- A. Ctrl-C
- B. Ctrl-L
- C. quit
- D. exit
- E. end

Answer: E

QUESTION 20

Refer to the exhibit. Where is the best place to see whether the system is ready for a Fabric Interconnect failover?



- A. A - Overall Status operable
- B. B - L1 Connection
- C. C - Part Details
- D. D - Access
- E. E - High Availability Details

Answer: E

QUESTION 21

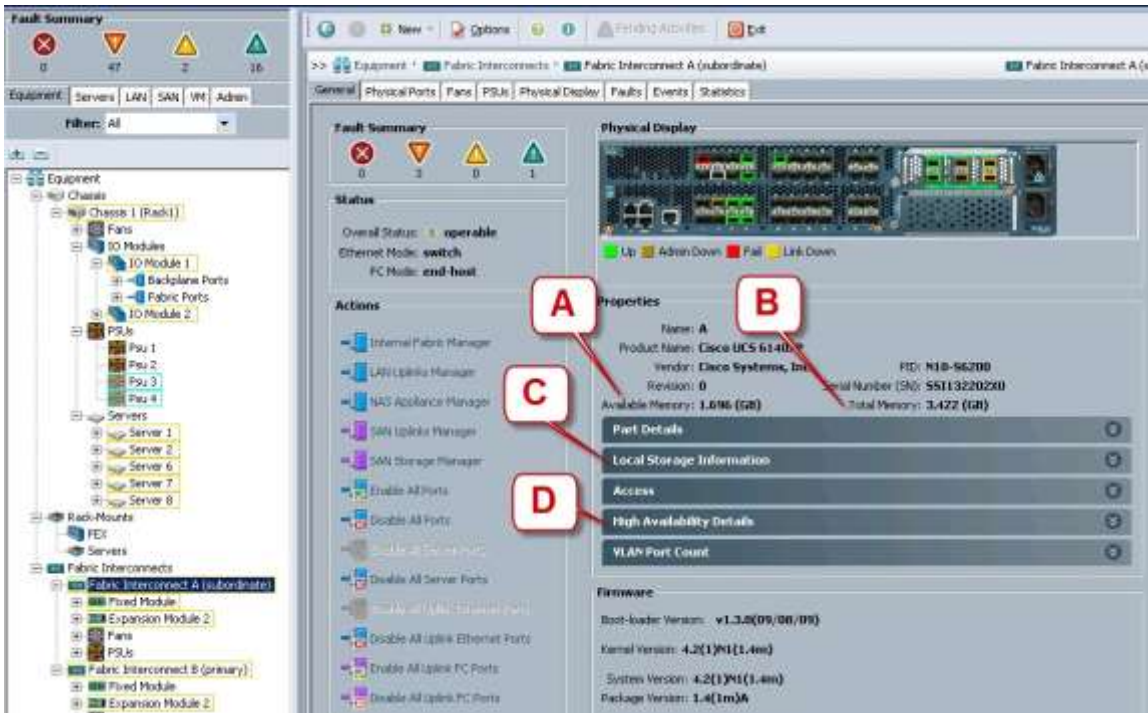
Which command saves the active configuration to NVRAM?

- A. copy startup-config running-config
- B. copy active-config backup-config
- C. copy running-config startup-config
- D. copy backup-config active-config

Answer: C

QUESTION 22

Refer to the exhibit. Where is the best place to see bootflash free space?



- A. A - Available Memory
- B. B - Total Memory
- C. C - Local Storage Information
- D. D - High Availability Details

Answer: C

QUESTION 23

Refer to the exhibit. Where is the best place to find the B200 BIOS version used in a specific Cisco UCS Manager version?

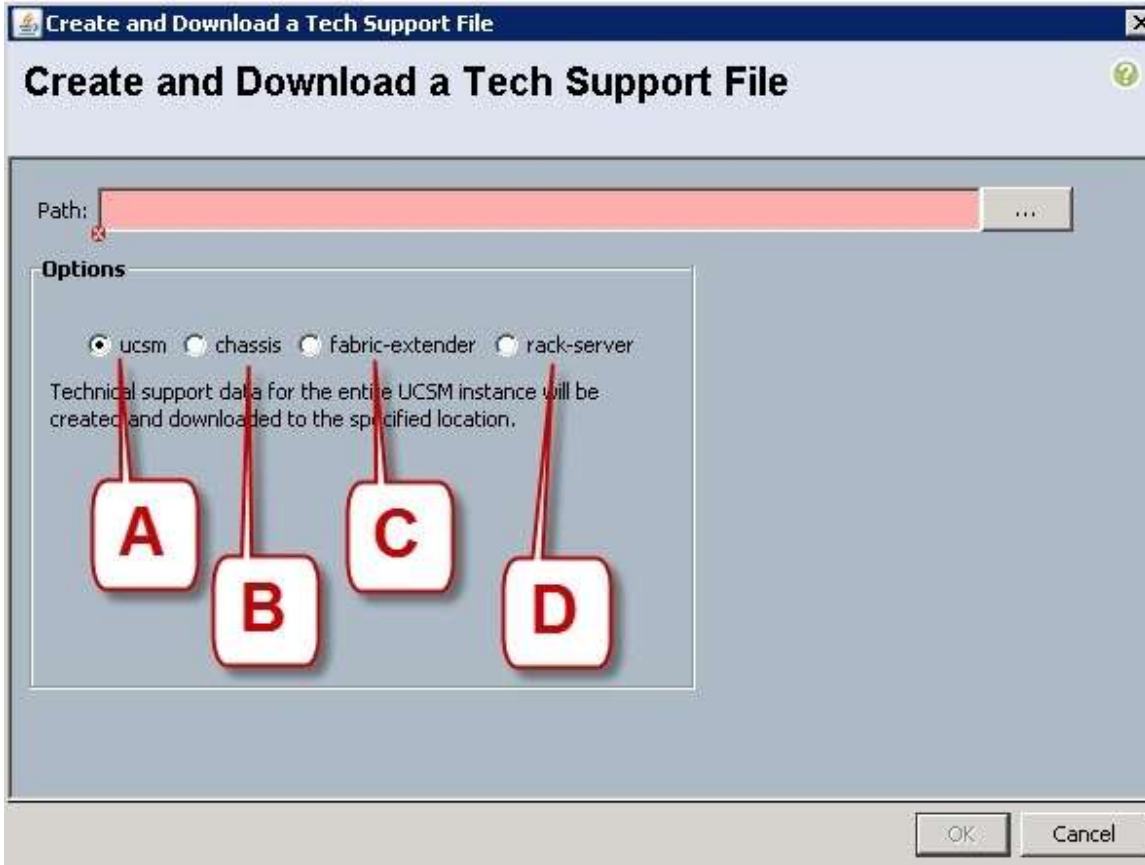


- A. A - Installed Firmware
- B. B - Packages
- C. C - Images
- D. D - Capability Catalog
- E. E - Management Extension

Answer: B

QUESTION 24

Refer to the exhibit. Which option should you select to get the output of the show tech-support detail command for the Cisco UCS B-Series blade?



- A. A - ucsm
- B. B - chassis
- C. C - fabric-extender
- D. D - rack-server

Answer: B

Explanation:

https://www.cisco.com/en/US/docs/unified_computing/ucs/ts/Frame-Files-Converted-to-DITA--Do-Not-Use/TS_GeneralTroubleshooting.html#wpixref13629

Radio Button	Description
ucsm	Saves a file that contains technical support data for the entire Cisco UCS Manager instance in the specified directory.
chassis	<p>Saves a file that contains technical support data for either the CIMCs or I/O modules in a given chassis. When you select this option, the Cisco UCS Manager GUI displays the following fields:</p> <ul style="list-style-type: none"> • Chassis ID field—The chassis for which you want technical support data. • CIMC radio button—Select this option to get CIMC technical support data. To get the data for a single server within the chassis, enter that server's ID in the CIMC ID field. To get the CIMC data for all servers in the chassis, enter all in this field. • IOM radio button—Select this option to get I/O module technical support data. To get the data for a single I/O module within the chassis, enter that I/O module's ID in the IOM ID field. To get the data for all I/O modules in the chassis, enter all in this field.
fabric-extender	Saves a file that contains technical support data for a Fabric Extender in the specified directory. When you select this option, Cisco UCS Manager GUI displays the FEX ID field. Enter the unique identifier of the FEX for which you want technical support data.
rack-server	<p>Saves a file that contains technical support data for a C-Series rack-mount server to the specified directory. When you select this option, the Cisco UCS Manager GUI displays the following fields:</p> <ul style="list-style-type: none"> • Rack Server ID field—The unique identifier of the rack server for which you want technical support data. • Rack Server Adapter ID field—The unique identifier of the adapter for which you want technical support data. To get the data for all adapters in the server, enter all in this field.

QUESTION 25

Which command syntax is correct to reset the admin password when the switch is in the kickstart prompt "switch(boot)#"?

- A. `exec -> admin-password <password>`
- B. `connect local-mgmt -> admin-password <password>`
- C. `configure terminal -> admin-password <password>`
- D. `connect nxos -> admin-password <password>`
- E. `admin-password <password>`

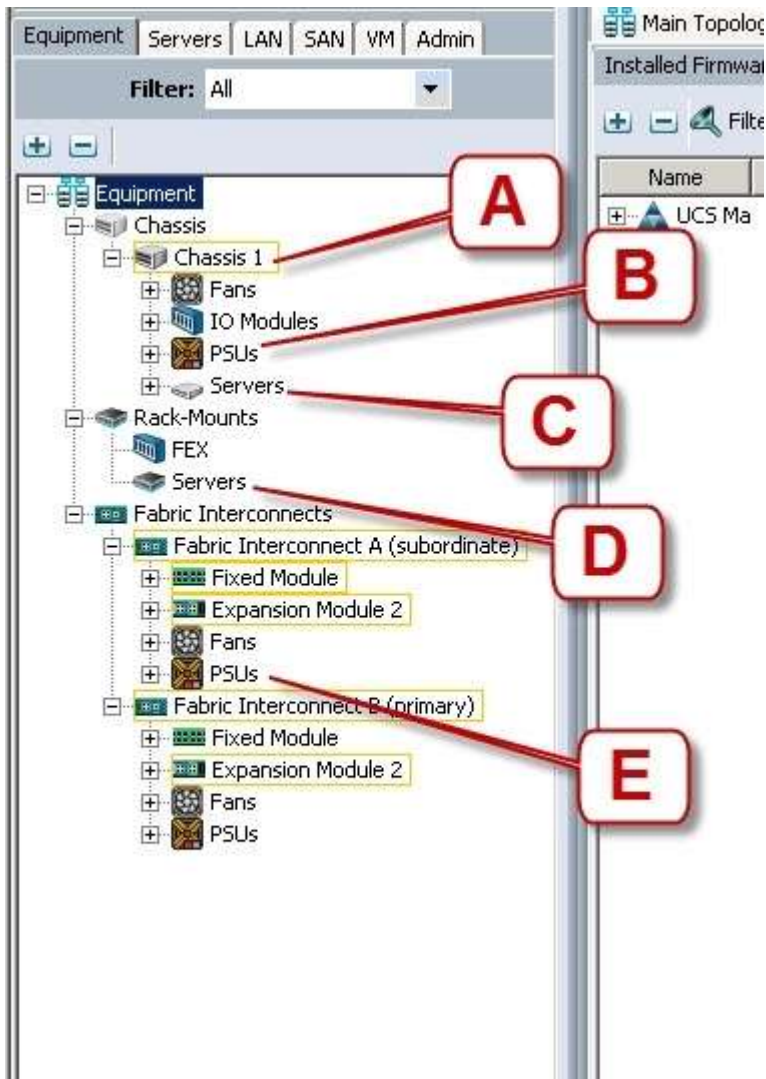
Answer: C

QUESTION 26

Refer to the exhibit. Where is the best place to see the power supply status of the blade server enclosure?

[010-151 Exam Dumps](#) [010-151 Exam Questions](#) [010-151 PDF Dumps](#) [010-151 VCE Dumps](#)

<https://www.braindump2go.com/010-151.html>



- A. A - Chassis 1
- B. B - Chassis 1 - PSUs
- C. C - Chassis1 - Servers
- D. D - Rack-Mounts - Servers
- E. E - Fabric Interconnects A - PSUs

Answer: B

QUESTION 27

To do a password recovery on a Cisco NX-OS Switch, which option shows the correct syntax to display the bootflash contents at the switch(boot)#?

- A. display bootflash:
- B. show bootflash:
- C. dir bootflash:
- D. find bootflash:

Answer: C

QUESTION 28

Which Cisco NX-OS command displays kernel uptime?

[010-151 Exam Dumps](#) [010-151 Exam Questions](#) [010-151 PDF Dumps](#) [010-151 VCE Dumps](#)

<https://www.braindump2go.com/010-151.html>

- A. show module
- B. show version
- C. show license
- D. show boot
- E. show interface

Answer: B

QUESTION 29

Which two commands display the version of Cisco NX-OS code that the device is currently running on? (Choose two.)

- A. show version
- B. show module
- C. show interface
- D. show boot
- E. show license

Answer: AB

QUESTION 30

On the Sensors page from the CIMC view, which four tabs are displayed to view further information? (Choose four.)

- A. Power Supply
- B. Fan
- C. Memory
- D. CPU
- E. LEDs
- F. Temperature

Answer: ABEF