

➤ **Vendor: Cisco**

➤ **Exam Code: 200-301**

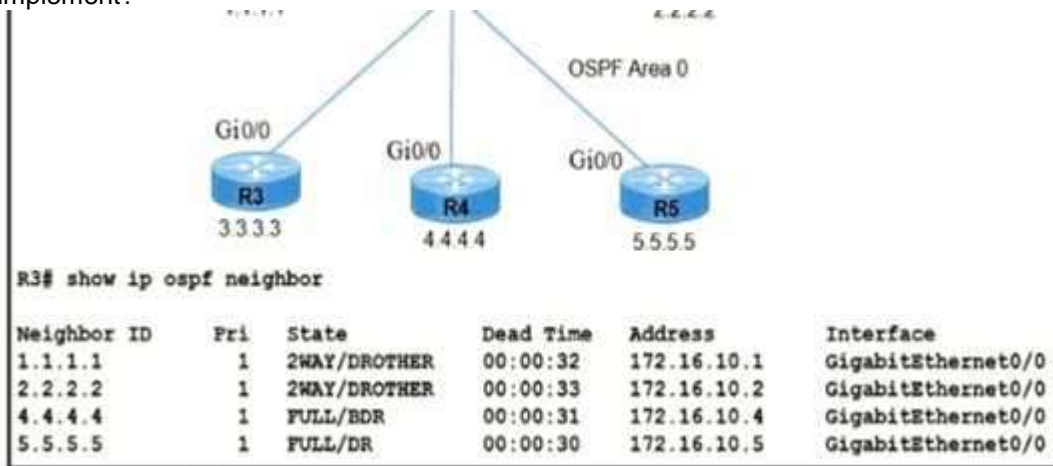
➤ **Exam Name: CCNA - Cisco Certified Network Associate**

➤ **New Updated Questions from [Braindump2go](https://www.braindump2go.com) (Updated in [May/2021](#))**

Visit Braindump2go and Download Full Version 200-301 Exam Dumps

QUESTION 479

Refer to the exhibit. R5 is the current DR on the network, and R4 is the BDR. Their interfaces are flapping, so a network engineer wants the OSPF network to elect a different DR and BDR. Which set of configurations must the engineer implement?



- A. R4(config)#interface gi0/0
R4(config-if)#ip ospf priority 20

R5(config)#interface gi0/0
R5(config-if)#ip ospf priority 10
- B. R2(config)#interface gi0/0
R2(config-if)#ip ospf priority 259

R3(config)#interface gi0/0
R3(config-if)#ip ospf priority 255
- C. R5(config)#interface gi0/0
R5(config-if)#ip ospf priority 120

R4(config)#interface gi0/0
R4(config-if)#ip ospf priority 110
- D. R3(config)#interface gi0/0
R3(config-if)#ip ospf priority 255

R2(config)#interface gi0/0
R2(config-if)#ip ospf priority 240

Answer: D

QUESTION 480

What are network endpoints?

[200-301 Exam Dumps](#) [200-301 Exam Questions](#) [200-301 PDF Dumps](#) [200-301 VCE Dumps](#)

<https://www.braindump2go.com/200-301.html>

- A. act as routers to connect a user to the service provider network
- B. a threat to the network if they are compromised
- C. support inter-VLAN connectivity
- D. enforce policies for campus-wide traffic going to the internet

Answer: B

QUESTION 481

Refer to the exhibit. Which two prefixes are included in this routing table entry? (Choose two.)

```
R2#show ip route  
C    192.168.1.0/26 is directly connected, FastEthernet0/1
```

- A. 192.168.1.17
- B. 192.168.1.61
- C. 192.168.1.64
- D. 192.168.1.127
- E. 192.168.1.254

Answer: BC

QUESTION 482

Which two components are needed to create an Ansible script that configures a VLAN on a switch? (Choose two.)

- A. cookbook
- B. task
- C. playbook
- D. model
- E. recipe

Answer: CD

QUESTION 483

Which two events occur automatically when a device is added to Cisco DNA Center? (Choose two.)

- A. The device is assigned to the Global site.
- B. The device is placed into the Unmanaged state.
- C. The device is placed into the Provisioned state.
- D. The device is placed into the Managed state.
- E. The device is assigned to the Local site.

Answer: AB

QUESTION 484

Which virtual MAC address is used by VRRP group 1?

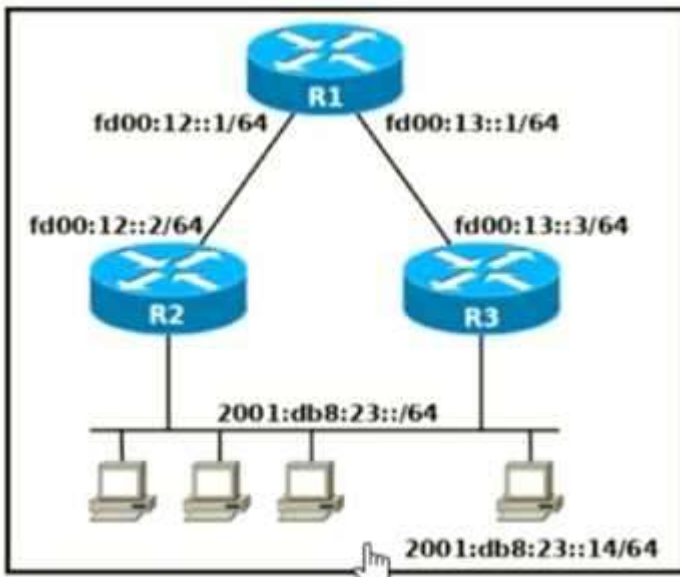
- A. 0050.0c05.ad81
- B. 0007.c061.bc01
- C. 0000.5E00.0101
- D. 0500.3976.6401

Answer: C

QUESTION 485

Refer to the exhibit. Which two commands, when configured on router R1, fulfill these requirements? (Choose two.)

- Packets towards the entire network 2001:db8:23::/64 must be forwarded through router R2.
- Packets toward host 2001:db8:23::14 preferably must be forwarded through R3.

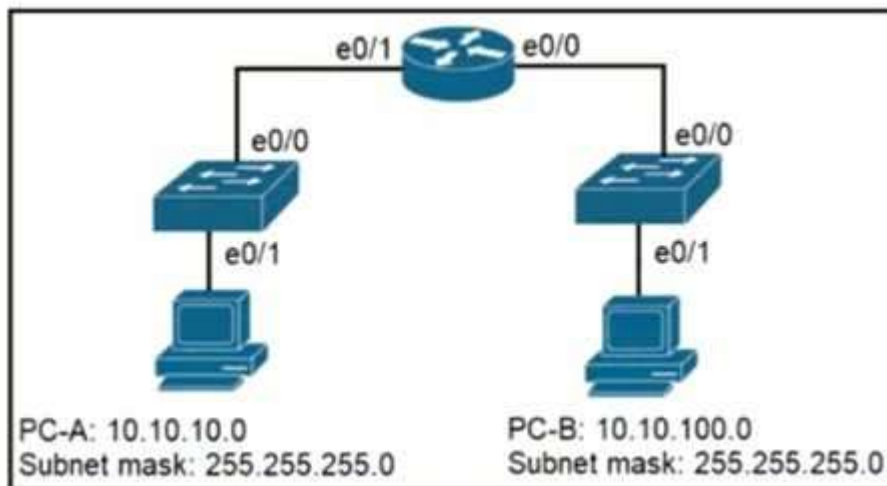


- A. Ipv6 route 2001:db8:23::/128 fd00:12::2
- B. Ipv6 route 2001:db8:23::14/128 fd00:13::3
- C. Ipv6 route 2001:db8:23::14/64 fd00:12::2
- D. Ipv6 route 2001:db8:23::/64 fd00:12::2
- E. Ipv6 route 2001:db8:23::14/64 fd00:12::2 200

Answer: DE

QUESTION 486

Refer to the exhibit. When PC-A sends traffic to PC-B, which network component is in charge of receiving the packet from PC-A verifying the IP addresses, and forwarding the packet to PC-B?



- A. Layer 2 switch
- B. Router
- C. Load balancer
- D. firewall

Answer: B

QUESTION 487

In software-defined architecture, which place handles switching for traffic through a Cisco router?

- A. Control
- B. Management
- C. Data
- D. application

Answer: C

QUESTION 488

Which level of severity must be set to get informational syslogs?

- A. alert
- B. critical
- C. notice
- D. debug

Answer: C

QUESTION 489

When a switch receives a frame for a known destination MAC address, how is the frame handed?

- A. sent to the port identified for the known MAC address
- B. broadcast to all ports
- C. forwarded to the first available port
- D. flooded to all ports except the one from which it originated

Answer: C

QUESTION 490

How does QoS optimize voice traffic?

- A. reducing bandwidth usage
- B. by reducing packet loss
- C. by differentiating voice and video traffic
- D. by increasing jitter

Answer: C

QUESTION 491

What is the function of a controller in controller-based networking?

- A. It serves as the centralized management point of an SDN architecture.
- B. It centralizes the data plane for the network.
- C. It is the card on a core router that maintains all routing decisions for a campus.
- D. It is a pair of core routers that maintain all routing decisions for a campus

Answer: A

QUESTION 492

Which action does the router take as it forwards a packet through the network?

[200-301 Exam Dumps](#) [200-301 Exam Questions](#) [200-301 PDF Dumps](#) [200-301 VCE Dumps](#)

<https://www.braindump2go.com/200-301.html>

- A. The router replaces the original source and destination MAC addresses with the sending router MAC address as the source and neighbor MAC address as the destination
- B. The router encapsulates the original packet and then includes a tag that identifies the source router MAC address and transmits it transparently to the destination
- C. The router encapsulates the source and destination IP addresses with the sending router IP address as the source and the neighbor IP address as the destination
- D. The router replaces the source and destination labels with the sending router interface label as a source and the next hop router label as a destination

Answer: C

QUESTION 493

What are two similarities between UTP Cat 5e and Cat 6a cabling? (Choose two.)

- A. Both operate at a frequency of 500 MHz.
- B. Both support runs of up to 55 meters.
- C. Both support runs of up to 100 meters.
- D. Both support speeds of at least 1 Gigabit.
- E. Both support speeds up to 10 Gigabit.

Answer: CD

QUESTION 494

What is a characteristic of cloud-based network topology?

- A. wireless connections provide the sole access method to services
- B. onsite network services are provided with physical Layer 2 and Layer 3 components
- C. services are provided by a public, private, or hybrid deployment
- D. physical workstations are configured to share resources

Answer: A

QUESTION 495

What is the difference in data transmission delivery and reliability between TCP and UDP?

- A. TCP transmits data at a higher rate and ensures packet delivery. UDP retransmits lost data to ensure applications receive the data on the remote end.
- B. UDP sets up a connection between both devices before transmitting data. TCP uses the three-way handshake to transmit data with a reliable connection.
- C. UDP is used for multicast and broadcast communication. TCP is used for unicast communication and transmits data at a higher rate with error checking.
- D. TCP requires the connection to be established before transmitting data. UDP transmits data at a higher rate without ensuring packet delivery.

Answer: D

QUESTION 496

How are the switches in a spine-and-leaf topology interconnected?

- A. Each leaf switch is connected to one of the spine switches.
- B. Each leaf switch is connected to two spine switches, making a loop.
- C. Each leaf switch is connected to each spine switch.
- D. Each leaf switch is connected to a central leaf switch, then uplinked to a core spine switch.

Answer: B

QUESTION 497

Refer to the exhibit. What is the metric of the route to the 192.168.10.33/28 subnet?

```
R1#show ip route
Codes: C - connected, S - static, R - RIP, M - mobile, B - BGP
       D - EIGRP, EX - EIGRP external, O - OSPF, IA - OSPF inter area
       N1 - OSPF NSSA external type 1, N2 - OSPF NSSA external type 2
       E1 - OSPF external type 1, E2 - OSPF external type 2
       i - IS-IS, su - IS-IS summary, L1 - IS-IS level-1, L2 - IS-IS level-2
       ia - IS-IS inter area, * - candidate default, U - per-user static route
       o - ODR, P - periodic downloaded static route
Gateway of last resort is 192.168.30.10 to network 0.0.0.0
 192.168.30.0/29 is subnetted, 2 subnets
C      192.168.30.0 is directly connected, FastEthernet0/0
C      192.168.30.8 is directly connected, Serial0/0.1
 192.168.10.0/24 is variably subnetted, 2 subnets, 2 masks
O IA   192.168.10.32/28 [110/193] via 192.168.30.10, 00:18:49, Serial0/0.1
O IA   192.168.10.0/27 [110/192] via 192.168.30.10, 00:18:49, Serial0/0.1
 192.168.20.0/30 is subnetted, 1 subnets
O IA   192.168.20.0 [110/128] via 192.168.30.10, 00:18:49, Serial0/0.1
 192.168.30.0/32 is subnetted, 1 subnets
C      192.168.30.1 is directly connected, Loopback0
O*IA 0.0.0.0/0 [110/84] via 192.168.30.10, 00:10:36, Serial0/0.1
```

- A. 84
- B. 110
- C. 128
- D. 192
- E. 193

Answer: E

QUESTION 498

Which two protocols must be disabled to increase security for management connections to a Wireless LAN Controller? (Choose two)

- A. Telnet
- B. SSH
- C. HTTP
- D. HTTPS
- E. TFTP

Answer: AC

QUESTION 499

What are two benefits of using the PortFast feature? (Choose two)

- A. Enabled interfaces are automatically placed in listening state
- B. Enabled interfaces come up and move to the forwarding state immediately
- C. Enabled interfaces never generate topology change notifications.
- D. Enabled interfaces that move to the learning state generate switch topology change notifications
- E. Enabled interfaces wait 50 seconds before they move to the forwarding state

Answer: AB

[200-301 Exam Dumps](#) [200-301 Exam Questions](#) [200-301 PDF Dumps](#) [200-301 VCE Dumps](#)

<https://www.braindump2go.com/200-301.html>

QUESTION 500

Which function is performed by DHCP snooping?

- A. propagates VLAN information between switches
- B. listens to multicast traffic for packet forwarding
- C. provides DDoS mitigation
- D. rate-limits certain traffic

Answer: A

QUESTION 501

When a client and server are not on the same physical network, which device is used to forward requests and replies between client and server for DHCP?

- A. DHCP relay agent
- B. DHCP server
- C. DHCPDISCOVER
- D. DHCPOFFER

Answer: A

QUESTION 502

Where is the interface between the control plane and data plane within the software-defined architecture?

- A. control layer and the infrastructure layer
- B. application layer and the infrastructure layer
- C. control layer and the application layer
- D. application layer and the management layer

Answer: A

QUESTION 503

Which plane is centralized by an SDN controller?

- A. management-plane
- B. control-plane
- C. data-plane
- D. services-plane

Answer: B

QUESTION 504

An engineer configures interface Gi1/0 on the company PE router to connect to an ISP. Neighbor discovery is disabled.

```
interface Gi1/0
description HQ_DC3978-87297
duplex full
speed 100
negotiation auto
lldp transmit
lldp receive
```

Which action is necessary to complete the configuration if the ISP uses third-party network devices?

[200-301 Exam Dumps](#) [200-301 Exam Questions](#) [200-301 PDF Dumps](#) [200-301 VCE Dumps](#)

<https://www.braindump2go.com/200-301.html>

- A. Enable LLDP globally
- B. Disable autonegotiation
- C. Disable Cisco Discovery Protocol on the interface
- D. Enable LLDP-MED on the ISP device

Answer: D

QUESTION 505

What is the benefit of configuring PortFast on an interface?

- A. After the cable is connected, the interface uses the fastest speed setting available for that cable type
- B. After the cable is connected, the interface is available faster to send and receive user data
- C. The frames entering the interface are marked with higher priority and then processed faster by a switch.
- D. Real-time voice and video frames entering the interface are processed faster

Answer: B

QUESTION 506

Drag and Drop Question

Drag and drop the DNS lookup components from the left onto the functions on the right.

Answer Area

cache	local database of address mappings that improves name-resolution performance
DNS	service that maps hostnames to IP addresses
domain	disable DNS services on a Cisco device
name resolver	in response to client requests, queries a name server for IP address information
no ip domain lookup	component of a URL that indicates the location or organization type, such as .com or .edu

Answer:

Answer Area

	cache
	DNS
	no ip domain lookup
	name resolver
	domain

QUESTION 507

Drag and Drop Question

Drag and drop the statement about networking from the left into the Corresponding networking types on the right. Not all statements are used.

This type deploys a consistent configuration across multiple devices.	Controller-Based Networking
A distributed control plane is needed.	
This type requires a distributed management plane.	Traditional Networking
Southbound APIs are used to apply configurations.	
Northbound APIs interact with end devices.	

Answer:

	Controller-Based Networking
	A distributed control plane is needed.
	Southbound APIs are used to apply configurations.
	Traditional Networking
	This type deploys a consistent configuration across multiple devices.
	This type requires a distributed management plane.

QUESTION 508

Drag and Drop Question

[200-301 Exam Dumps](#) [200-301 Exam Questions](#) [200-301 PDF Dumps](#) [200-301 VCE Dumps](#)

<https://www.braindump2go.com/200-301.html>

Drag and drop the IPv6 address type characteristics from the left to the right.

attached to a single subnet	Link-Local Address
addresses with prefix FC00::/7	
configured only once per interface	Unique Local Address
addressing for exclusive use internally without Internet routing	

Answer:

	Link-Local Address
	addresses with prefix FC00::/7
	addressing for exclusive use internally without Internet routing
	Unique Local Address
	attached to a single subnet
	configured only once per interface

QUESTION 509

Drag and Drop Question

An engineer is configuring an encrypted password for the enable command on a router where the local user database has already been configured. Drag and drop the configuration commands from the left into the correct sequence on the right. Not all commands are used

configure terminal	first
enable	second
enable secret \$hfl@4fs	third
exit	fourth
line vty 0 4	
service password-encryption	

Answer:

	enable
	configure terminal
	enable secret \$hfl@4fs
exit	line vty 0 4
service password-encryption	

QUESTION 510

Drag and Drop Question

Drag and drop the functions of DHCP from the left onto any of the positions on the right Not all functions are used.

provides local control for network segments using a client-server scheme	1
reduces the administrative burden for onboarding end users	2
associates hostnames to IP addresses	3
maintains an address pool	4
assigns IP addresses to local hosts for a configurable lease time	
offers domain name server configuration	
uses authoritative servers for record keeping	

Answer:

