

➤ **Vendor: Cisco**

➤ **Exam Code: 200-301**

➤ **Exam Name: CCNA - Cisco Certified Network Associate**

➤ **New Updated Questions from [Braindump2go](#) (Updated in [May/2020](#))**

Visit Braindump2go and Download Full Version 200-301 Exam Dumps

QUESTION 227

Refer to the exhibit. Router R1 is running three different routing protocols. Which route characteristic is used by the router to forward the packet that it receives for destination IP 172.16.32.1?

```
R1# show ip route
```

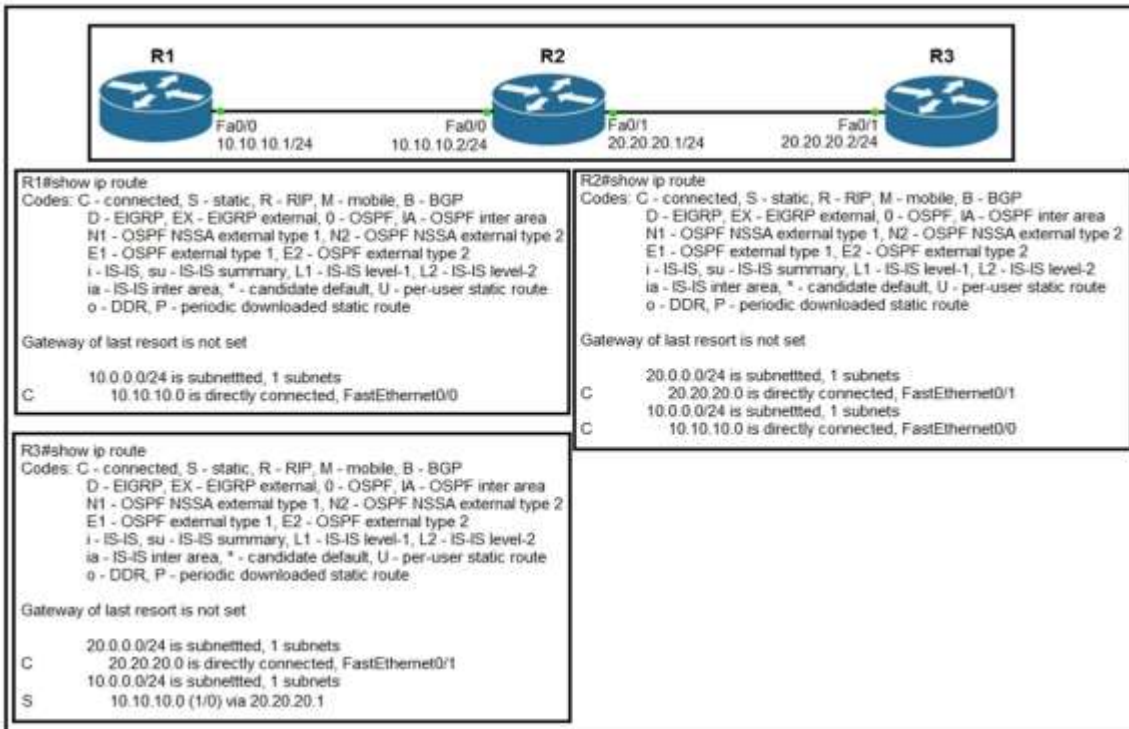
```
....  
D    172.16.32.0/27    [90/2888597172] via 20.1.1.1  
O    172.16.32.0/19    [110/292094] via 20.1.1.10  
R    172.16.32.0/24    [120/2] via 20.1.1.3
```

- A. longest prefix
- B. administrative distance
- C. cost
- D. metric

Answer: A

QUESTION 228

Refer to the exhibit. Router R1 Fa0/0 cannot ping router R3 Fa0/1. Which action must be taken in router R1 to help resolve the configuration issue?



- A. set the default gateway as 20.20.20.2
- B. configure a static route with Fa0/1 as the egress interface to reach the 20.20.20.0/24 network
- C. configure a static route with 10.10.10.2 as the next hop to reach the 20.20.20.0/24 network
- D. set the default network as 20.20.20.0/24

Answer: C

QUESTION 229

By default, how does EIGRP determine the metric of a route for the routing table?

- A. It uses the bandwidth and delay values of the path to calculate the route metric.
- B. It uses a default metric of 10 for all routes that are learned by the router.
- C. It counts the number of hops between the receiving and destination routers and uses that value as the metric.
- D. It uses a reference bandwidth and the actual bandwidth of the connected link to calculate the route metric.

Answer: A

QUESTION 230

A packet is destined for 10.10.1.22. Which static route does the router choose to forward the packet?

- A. ip route 10.10.1.0 255.255.255.240 10.10.255.1
- B. ip route 10.10.1.20 255.255.255.252 10.10.255.1
- C. ip route 10.10.1.16 255.255.255.252 10.10.255.1
- D. ip route 10.10.1.20 255.255.255.254 10.10.255.1

Answer: B

QUESTION 231

Refer to the exhibit. How does the router manage traffic to 192.168.12.16?

```
EIGRP: 192.168.12.0/24
RIP: 192.168.12.0/27
OSPF: 192.168.12.0/28
```

- A. It chooses the EIGRP route because it has the lowest administrative distance.
- B. It load-balances traffic between all three routes.
- C. It chooses the OSPF route because it has the longest prefix inclusive of the destination address.
- D. It selects the RIP route because it has the longest prefix inclusive of the destination address.

Answer: C

QUESTION 232

What are two reasons for an engineer to configure a floating static route? (Choose two.)

- A. to enable fallback static routing when the dynamic routing protocol fails
- B. to route traffic differently based on the source IP of the packet
- C. to automatically route traffic on a secondary path when the primary path goes down
- D. to support load balancing via static routing
- E. to control the return path of traffic that is sent from the router

Answer: AC

QUESTION 233

Refer to the exhibit. How does router R1 handle traffic to 192.168.10.16?

```
R1# show ip route
```

| | | |
|------|-----------------|------------------------------|
| D | 192.168.10.0/24 | [90/2679326] via 192.168.1.1 |
| R | 192.168.10.0/27 | [120/3] via 192.168.1.2 |
| O | 192.168.10.0/23 | [110/2] via 192.168.1.3 |
| i L1 | 192.168.10.0/13 | [115/30] via 192.168.1.4 |

- A. It selects the IS-IS route because it has the shortest prefix inclusive of the destination address
- B. It selects the RIP route because it has the longest prefix inclusive of the destination address
- C. It selects the OSPF route because it has the lowest cost
- D. It selects the EIGRP route because it has the lowest administrative distance

Answer: B

QUESTION 234

Refer to the exhibit. A router received these five routes from different routing information sources. Which two routes does the router install in its routing table? (Choose two)

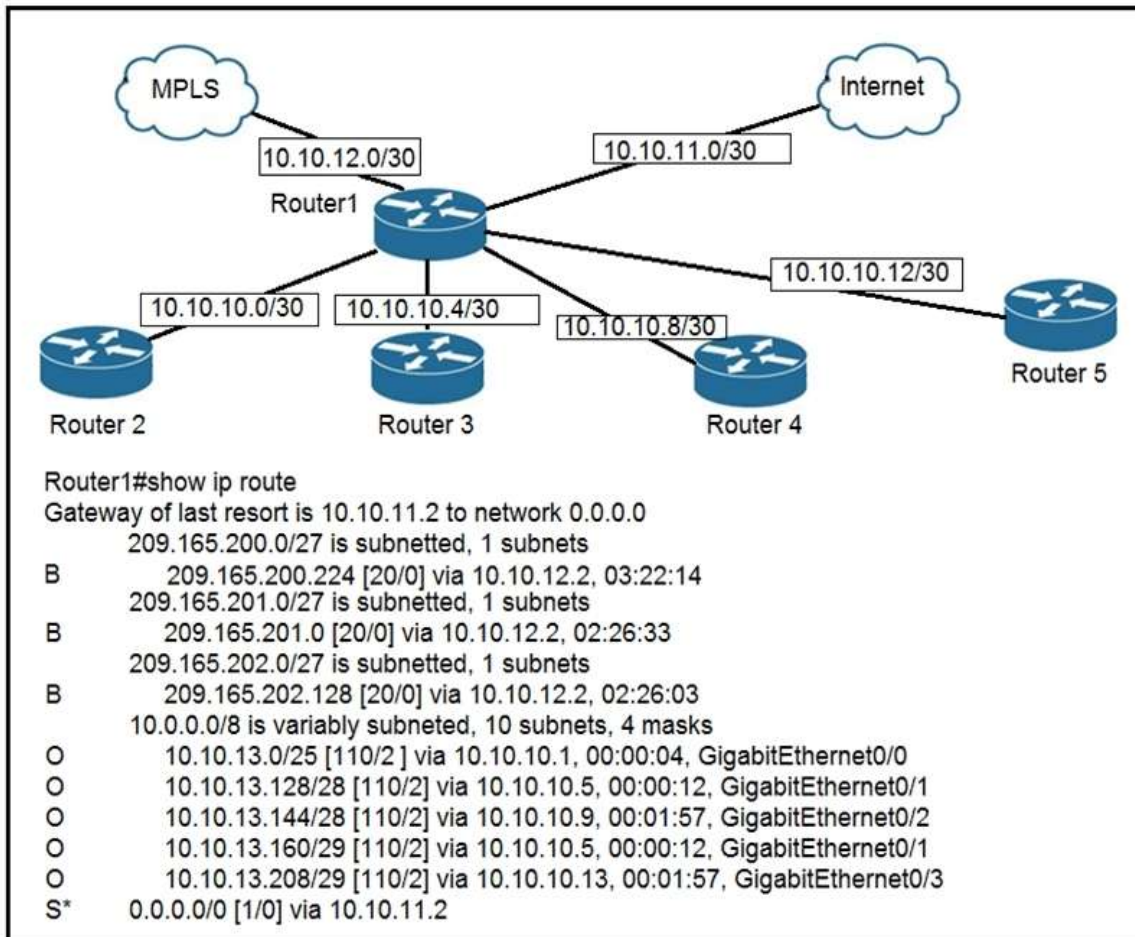
IBGP route 10.0.0.0/30
RIP route 10.0.0.0/30
OSPF route 10.0.0.0/16
OSPF route 10.0.0.0/30
EIGRP route 10.0.0.1/32

- A. OSPF route 10.0.0.0/30
- B. IBGP route 10.0.0.0/30
- C. OSPF route 10.0.0.0/16
- D. EIGRP route 10.0.0.1/32
- E. RIP route 10.0.0.0/30

Answer: CD

QUESTION 235

Refer to the exhibit. To which device does Router1 send packets that are destined to host 10.10.13.165?



- A. Router2
- B. Router3
- C. Router4
- D. Router5

Answer: B

QUESTION 236

R1 has learned route 10.10.10.0/24 via numerous routing protocols. Which route is installed?

- A. route with the next hop that has the highest IP
- B. route with the lowest cost
- C. route with the lowest administrative distance
- D. route with the shortest prefix length

Answer: C

QUESTION 237

Which two minimum parameters must be configured on an active interface to enable OSPFV2 to operate? (Choose two.)

- A. OSPF process ID
- B. OSPF MD5 authentication key
- C. OSPF stub flag
- D. IPv6 address
- E. OSPF area

Answer: AE