

➤ **Vendor: Cisco**

➤ **Exam Code: 200-301**

➤ **Exam Name: CCNA - Cisco Certified Network Associate**

➤ **New Updated Questions from [Braindump2go](#) (Updated in [May/2021](#))**

Visit Braindump2go and Download Full Version 200-301 Exam Dumps

QUESTION 456

What are two characteristics of the distribution layer in a three-tier network architecture? (Choose two.)

- A. *serves as the network aggregation point*
- B. *provides a boundary between Layer 2 and Layer 3 communications*
- C. *designed to meet continuous, redundant uptime requirements*
- D. *is the backbone for the network topology*
- E. *physical connection point for a LAN printer*

Answer: BC

QUESTION 457

What is the purpose of using First Hop Redundancy Protocol in a specific subnet?

- A. Filter traffic based on destination IP addressing
- B. Sends the default route to the hosts on a network
- C. ensures a loop-free physical topology
- D. forwards multicast hello messages between routers

Answer: C

QUESTION 458

Which access layer threat-mitigation technique provides security based on identity?

- A. Dynamic ARP Inspection
- B. using a non-default native VLAN
- C. 802.1x
- D. DHCP snooping

Answer: C

QUESTION 459

What must be considered when using 802.11a?

- A. It is compatible with 802.11b- and 802.11g-compliant wireless devices
- B. It is used in place of 802.11b/g when many nonoverlapping channels are required
- C. It is susceptible to interference from 2.4 GHz devices such as microwave ovens.
- D. It is chosen over 802.11b/g when a lower-cost solution is necessary

Answer: A

[200-301 Exam Dumps](#) [200-301 Exam Questions](#) [200-301 PDF Dumps](#) [200-301 VCE Dumps](#)

<https://www.braindump2go.com/200-301.html>

QUESTION 460

When a site-to-site VPN is configured, which IPsec mode provides encapsulation and encryption of the entire original P packet?

- A. IPsec tunnel mode with AH
- B. IPsec transport mode with AH
- C. IPsec tunnel mode with ESP
- D. IPsec transport mode with ESP

Answer: C

QUESTION 461

What does physical access control regulate?

- A. access to specific networks based on business function
- B. access to servers to prevent malicious activity
- C. access to computer networks and file systems
- D. access to networking equipment and facilities

Answer: D

QUESTION 462

On workstations running Microsoft Windows, which protocol provides the default gateway for the device?

- A. DHCP
- B. STP
- C. SNMP
- D. DNS

Answer: A

QUESTION 463

How are VLAN hopping attacks mitigated?

- A. enable dynamic ARP inspection
- B. manually implement trunk ports and disable DTP
- C. activate all ports and place in the default VLAN
- D. configure extended VLANs

Answer: B

QUESTION 464

What is the role of a firewall in an enterprise network?

- A. Forwards packets based on stateless packet inspection
- B. Processes unauthorized packets and allows passage to less secure segments of the network
- C. determines which packets are allowed to cross from unsecured to secured networks
- D. explicitly denies all packets from entering an administrative domain

Answer: C

QUESTION 465

Which two primary drivers support the need for network automation? (Choose two.)

- A. Eliminating training needs
- B. Increasing reliance on self-diagnostic and self-healing
- C. Policy-derived provisioning of resources
- D. Providing a ship entry point for resource provisioning
- E. Reducing hardware footprint

Answer: CD

QUESTION 466

What is a function of the Cisco DNA Center Overall Health Dashboard?

- A. It provides a summary of the top 10 global issues.
- B. It provides detailed activity logging for the 10 devices and users on the network.
- C. It summarizes the operational status of each wireless device on the network.
- D. It summarizes daily and weekly CPU usage for servers and workstations in the network.

Answer: A

QUESTION 467

Which protocol requires authentication to transfer a backup configuration file from a router to a remote server?

- A. DTP
- B. FTP
- C. SMTP
- D. TFTP

Answer: B

QUESTION 468

After installing a new Cisco ISE server, which task must the engineer perform on the Cisco WLC to connect wireless clients on a specific VLAN based on their credentials?

- A. Enable the allow AAA Override
- B. Enable the Event-Driven RRM.
- C. Disable the LAG Mode or Next Reboot.
- D. Enable the Authorized MAC APs against auth-list or AAA.

Answer: A

QUESTION 469

Which QoS tool is used to optimize voice traffic on a network that is primarily intended for data traffic?

- A. FIFO
- B. WFQ
- C. PQ
- D. WRED

Answer: C

QUESTION 470

Which action does the router take as it forwards a packet through the network?

- A. The router replaces the source and destination labels with the sending router interface label as a source and the next hop router label as a destination
- B. The router encapsulates the source and destination IP addresses with the sending router IP

[200-301 Exam Dumps](#) [200-301 Exam Questions](#) [200-301 PDF Dumps](#) [200-301 VCE Dumps](#)

<https://www.braindump2go.com/200-301.html>

address as the source and the neighbor IP address as the destination

- C. The router replaces the original source and destination MAC addresses with the sending router MAC address as the source and neighbor MAC address as the destination
- D. The router encapsulates the original packet and then includes a tag that identifies the source router MAC address and transmit transparently to the destination

Answer: C

QUESTION 471

Where is the interface between the control plane and data plane within the software-defined architecture?

- A. control layer and the infrastructure layer
- B. application layer and the infrastructure layer
- C. application layer and the management layer
- D. control layer and the application layer

Answer: C

QUESTION 472

An implementer is preparing hardware for virtualization to create virtual machines on a host. What is needed to provide communication between hardware and virtual machines?

- A. hypervisor
- B. router
- C. straight cable
- D. switch

Answer: A

QUESTION 473

A network analyst is tasked with configured the date and time on a router using EXEC mode. The date must be set to 12:00am. Which command should be used?

- A. Clock timezone
- B. Clock summer-time-recurring
- C. Clock summer-time date
- D. Clock set

Answer: D

QUESTION 474

Refer to the exhibit. If R1 receives a packet destined to 172.161.1, to which IP address does it send the packet?

R1#show ip route
#output suppressed

Gateway of last resort is 192.168.14.4 to network 0.0.0.0

```
C    172.16.1.128/25 is directly connected, GigabitEthernet1/1/0
C    192.168.12.0/24 is directly connected, FastEthernet0/0
C    192.168.13.0/24 is directly connected, FastEthernet0/1
C    192.168.14.0/24 is directly connected, FastEthernet1/0
C    172.16.16.1 is directly connected, Loopback1
    192.168.10.0/24 is variably subnetted, 3 subnets, 3 masks
O    192.168.10.0/24 [110/2] via 192.168.14.4, 00:02:01, FastEthernet1/0
O    192.168.10.32/27 [110/11] via 192.168.13.3, 00:00:52, FastEthernet0/1
O    192.168.0.0/16 [110/2] via 192.168.15.5, 00:05:01, FastEthernet1/1
D    192.168.10.1/32 [90/52778] via 192.168.12.2, 00:03:44, FastEthernet0/0
O*E2 0.0.0.0/0 [110/1] via 192.168.14.4, 00:00:10, FastEthernet1/0
```

- A. 192.168.12.2
- B. 192.168.13.3
- C. 192.168.14.4
- D. 192.168.15.5

Answer: C

QUESTION 475

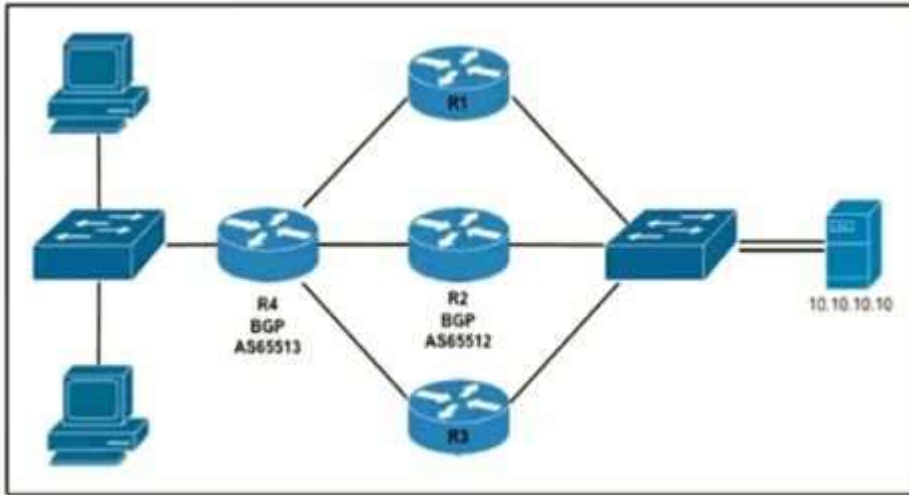
A network administrator is asked to configure VLANS 2, 3 and 4 for a new implementation. Some ports must be assigned to the new VLANS with unused remaining. Which action should be taken for the unused ports?

- A. configure port in the native VLAN
- B. configure ports in a black hole VLAN
- C. configure in a nondefault native VLAN
- D. configure ports as access ports

Answer: B

QUESTION 476

Refer to the exhibit. Router R4 is dynamically learning the path to the server. If R4 is connected to R1 via OSPF Area 20, to R2 via R2 BGP, and to R3 via EIGRP 777, which path is installed in the routing table of R4?



- A. the path through R1, because the OSPF administrative distance is 110
- B. the path through R2, because the IBGP administrative distance is 200
- C. the path through R2 because the EBGP administrative distance is 20
- D. the path through R3, because the EIGRP administrative distance is lower than OSPF and BGP

Answer: C

QUESTION 477

Why was the RFC 1918 address space defined?

- A. conserve public IPv4 addressing
- B. preserve public IPv6 address space
- C. reduce instances of overlapping IP addresses
- D. support the NAT protocol

Answer: A

QUESTION 478

Which HTTP status code is returned after a successful REST API request?

- A. 200
- B. 301
- C. 404
- D. 500

Answer: A