

➤ **Vendor: Cisco**

➤ **Exam Code: 300-420**

➤ **Exam Name: Designing Cisco Enterprise Networks (ENSLD)**

➤ **New Updated Questions from [Braindump2go](#) (Updated in [August/2020](#))**

Visit Braindump2go and Download Full Version 300-420 Exam Dumps

QUESTION 1

Which routes does the overlay management protocol advertise in an SD-WAN overlay?

- A. underlay, MPLS, and overlay
- B. primary, backup, and load-balanced
- C. prefix, TLOC, and service
- D. Internet, MPLS, and backup

Answer: C

QUESTION 2

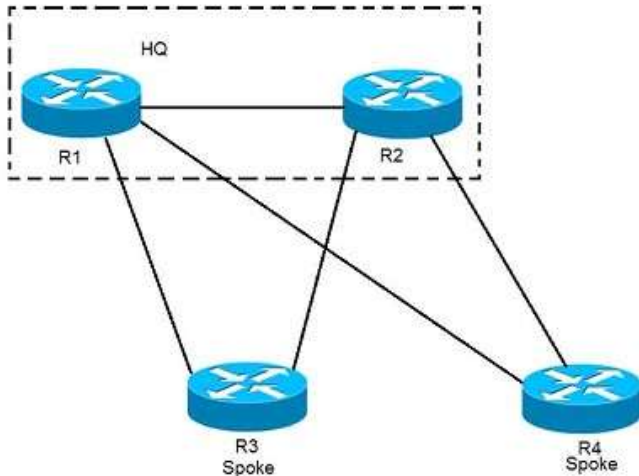
A network solution is being designed for a company that connects to multiple Internet service providers. Which Cisco proprietary BGP path attribute will influence outbound traffic flow?

- A. Local Preference
- B. MED
- C. Weight
- D. AS Path
- E. Community

Answer: C

QUESTION 3

Refer to the exhibit. EIGRP has been configured on all links. The spoke nodes have been configured as EIGRP stubs, and the WAN links to R3 have higher bandwidth and lower delay than the links to R4. When a link failure occurs at the R1-R2 link, what happens to traffic on R1 that is destined for a subnet attached to R2?



- A. R1 has no route to R2 and drops the traffic
- B. R1 load-balances across the paths through R3 and R4 to reach R2
- C. R1 forwards the traffic to R3, but R3 drops the traffic
- D. R1 forwards the traffic to R3 in order to reach R2

Answer: D

QUESTION 4

A company is using OSPF between its HQ location and a branch office. HQ is assigned area 0 and the branch office is assigned area 1.

The company purchases a second branch office, but due to circuit delays to HQ, it decides to connect the new branch office to the existing branch office as a temporary measure.

The new branch office is assigned area 2.

Which OSPF configuration enables all three locations to exchange routes?

- A. The existing branch office must be configured as a stub area
- B. A virtual link must be configured between the new branch office and HQ
- C. A sham link must be configured between the new branch office and HQ
- D. The new branch office must be configured as a stub area

Answer: B

QUESTION 5

An engineer must design a multicast network for a financial application.

Most of the multicast sources also receive multicast traffic (many-to-many deployment model).

To better scale routing tables, the design must not use source trees.

Which multicast protocol satisfies these requirements?

- A. PIM-SSM
- B. PIM-SM
- C. MSDP
- D. BIDIR-PIM

Answer: B

QUESTION 6

An engineer is working for a large cable TV provider that requires multiple sources streaming video on different channels using multicast with no rendezvous point.

Which multicast protocol meets these requirements?

[300-420 Exam Dumps](#) [300-420 Exam Questions](#) [300-420 PDF Dumps](#) [300-420 VCE Dumps](#)

<https://www.braindump2go.com/300-420.html>

- A. PIM-SM
- B. PIM-SSM
- C. any-source multicast
- D. BIDIR-PIM

Answer: D

QUESTION 7

What are two valid scaling techniques when an EIGRP network is designed that consists of more than 1000 routers? (Choose two.)

- A. Use structured hierarchical topology with route summarization
- B. Used sub-second timers
- C. Use the distribute-list command to filter routes
- D. Modify delay parameters on the links
- E. Implement multiple EIGRP autonomous systems

Answer: AE

QUESTION 8

A customer with an IPv4 only network topology wants to enable IPv6 connectivity while preserving the IPv4 topology services.

The customer plans to migrate IPv4 services to the IPv6 topology, then decommission the IPv4 topology. Which topology supports these requirements?

- A. dual stack
- B. 6VPE
- C. 6to4
- D. NAT64

Answer: A

QUESTION 9

A company with multiple service providers wants to speed up BGP convergence time in the event a failure occurs with their primary link.

Which approach achieves this goal and does not impact router CPU utilization?

- A. Utilize BFD and tune the multiplier to 50
- B. Lower the BGP hello interval
- C. Decrease the BGP keepalive timer
- D. Utilize BFD and keep the default BGP timers

Answer: C

QUESTION 10

An engineer is working with NETCONF and Cisco NX-OS based devices.

The engineer needs a YANG model that supports a specific feature relevant only to Cisco NX-OS.

Which model must the engineer choose?

- A. Native
- B. IEEE
- C. OpenConfig
- D. IETF

Answer: D

QUESTION 11

When designing interdomain multicast, which two protocols are deployed to achieve communication between multicast sources and receivers? (Choose two.)

- A. IGMPv2
- B. BIDIR-PIM
- C. MP-BGP
- D. MSDP
- E. MLD

Answer: CD

QUESTION 12

A branch office has a primary L3VPN MPLS connection back to the main office and an IPSEC VPN tunnel that serves as backup.

Which design ensures that data is sent over the backup connection only if the primary MPLS circuit is down?

- A. Use EIGRP to establish a neighbor relationship with the main office via L3VPN MPLS and the IPSEC VPN tunnel.
- B. Use BGP with the multipath feature enabled to force traffic via the primary path when available.
- C. Use static routes tied to an IP SLA to prefer the primary path while a floating static route points to the backup connection.
- D. Use OSPF with a passive-interface command on the backup connection.

Answer: C

QUESTION 13

Company A recently acquired another company. Users of the newly acquired company must be able to access a server that exists on Company A's network, both companies use overlapping IP address ranges.

Which action conserves IP address space and provides access to the server?

- A. Use a single IP address to create overload NAT
- B. Use a single IP address to create a static NAT entry
- C. Build one-to-one NAT translation for every user that needs access
- D. Re-IP overlapping address space in the acquired company

Answer: A

QUESTION 14

In an SD-WAN architecture, which methods are used to bootstrap a vEdge router?

- A. DHCP options or manual configuration
- B. vManage or DNS records
- C. ZTP or manual configuration
- D. DNS records or DHCP options

Answer: C

QUESTION 15

Which two statements about VRRP advertisements are true? (Choose two.)

- A. They are sent from the master router and standby routers.
- B. They include VRRP timer information.

- C. They are sent only from the master router.
- D. They include priority information.
- E. They are sent every three seconds by default.

Answer: AD