

➤ **Vendor:** Cisco

➤ **Exam Code:** 300-420

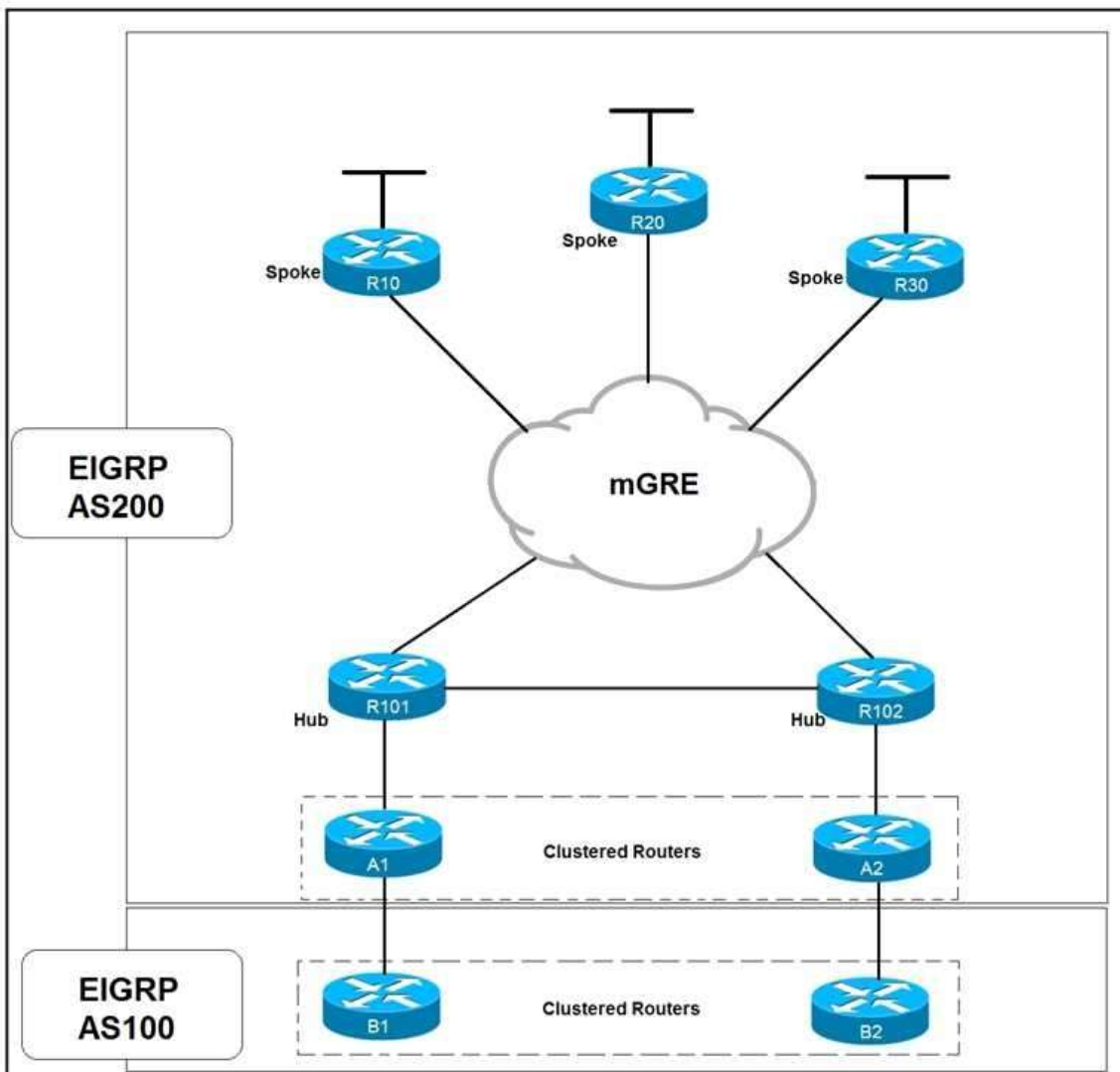
➤ **Exam Name:** Designing Cisco Enterprise Networks (ENSLD)

➤ **New Updated Questions from** [Braindump2go](https://www.braindump2go.com) (Updated in [August/2020](https://www.braindump2go.com))

Visit Braindump2go and Download Full Version 300-420 Exam Dumps

QUESTION 40

Refer to the exhibit. Which solution decreases the EIGRP convergence time?



- A. Enable subsecond timers
- B. Increase the hold time value
- C. Increase the dead timer value
- D. Enable stub routing on the spokes

[300-420 Exam Dumps](https://www.braindump2go.com/300-420.html) [300-420 Exam Questions](https://www.braindump2go.com/300-420.html) [300-420 PDF Dumps](https://www.braindump2go.com/300-420.html) [300-420 VCE Dumps](https://www.braindump2go.com/300-420.html)

<https://www.braindump2go.com/300-420.html>

Answer: D

QUESTION 41

A router running ISIS is showing high CPU and bandwidth utilization.
An engineer discovers that the router is configured as L1/L2 and has L1 and L2 neighbors.
Which step optimizes the design to address the issue?

- A. Make this router a DIS for each of the interfaces
- B. Disable the default behavior of advertising the default route on the L1/L2 router
- C. Configure the router to be either L1 or L2
- D. Configure each interface as either L1 or L2 circuit type

Answer: D

QUESTION 42

A network engineer must connect two sites across a public network using a secure tunneling technology that supports multicast traffic. Which technology must be chosen?

- A. IPsec
- B. GRE
- C. PTP
- D. GRE over IPsec

Answer: D

QUESTION 43

Which control-plane technology allows the same subnet to exist across multiple network locations?

- A. LISP
- B. VXLAN
- C. FabricPath
- D. ISE mobility services

Answer: B

QUESTION 44

Which two statements describe source trees in a multicast environment? (Choose two.)

- A. Source trees guarantee the minimum amount of network latency for forwarding multicast traffic
- B. Source trees create an optimal path between the source and the receivers
- C. Source trees use a single common root placed at some chosen point in the network
- D. Source trees can introduce latency in packet delivery
- E. Source trees can create suboptimal paths between the source and the receivers

Answer: AB

QUESTION 45

Which of the following are valid methods of VRRP authentication? (Choose three.)

- A. SHA-124
- B. SHA-254
- C. No authentication
- D. WAP
- E. Plain text authentication

F. MD5

Answer: CEF

QUESTION 46

Which three basic types of SD-WAN deployments are out on the market? (Choose three.)

- A. SD-WAN as-a-Service
- B. secure SD-WAN service
- C. internet-based SD-WAN
- D. policy-based SD-WAN
- E. managed service SD-WAN
- F. MPLS-based

Answer: ACE

QUESTION 47

Which two statements about VRRP are true? (Choose two.)

- A. Authentication commands must be entered under the interface.
- B. It sends advertisements to multicast address 224.0.0.9.
- C. It supports MD5 and IP sec authentication.
- D. It can use an interface IP address as the virtual IP address.
- E. It sends advertisements to multicast address 224.0.0.18.
- F. It is a Cisco proprietary protocol.

Answer: DE

QUESTION 48

What following parameters for the EIGRP authentication need to match in order for EIGRP neighbors to establish a neighbor relationship?

- A. Autonomous System number.
- B. K-Values
- C. If authentication is used both: the key number, the password, and the date/time.
- D. The neighbors must be on common subnet (all IGP's follow this rule).

Answer: C

QUESTION 49

Which feature must be incorporated into the campus LAN design to enable Wake on LAN?

- A. dynamic ARP Inspection Snooping on layer 2 devices
- B. directed broadcasts on layer 3 devices
- C. proxy ARP on layer 3 devices
- D. DHCP Snooping on layer 2 devices

Answer: B

QUESTION 50

Which function are fabric intermediate nodes responsible for in an SD-Access Architecture?

- A. mapping EIDs to RLOCs
- B. encapsulating user traffic in a VXLAN header including the SGT
- C. registering new endpoints in the HTDB

D. transporting IP packets between edge nodes and border nodes

Answer: D

QUESTION 51

An engineer is designing a QoS policy that queues excess packets for later transmission. Which mechanism must be included in the design?

- A. shaping
- B. WRED
- C. policing
- D. RED

Answer: A

QUESTION 52

An organization is designing a detailed QoS plan that limits bandwidth to specific rates. Which two parameters are supported by the traffic policing feature? (Choose two.)

- A. violating
- B. marking
- C. shaping
- D. bursting
- E. conforming

Answer: BC