

➤ **Vendor: Cisco**

➤ **Exam Code: 300-615**

➤ **Exam Name: Troubleshooting Cisco Data Center Infrastructure (DCIT)**

➤ **New Updated Questions from [Braindump2go](https://www.braindump2go.com) (Updated in [Sep/2020](#))**

Visit Braindump2go and Download Full Version 300-615 Exam Dumps

QUESTION 60

Refer to the exhibit. Cisco UCS Manager reports that the number of disks assigned to a server exceeds the number of available disk slots. What could cause this issue?

```
RAID Controller 1:  
Local Disk 1:  
Product Name: 73GB 6Gb SAS 15K RPM SFF HDD/hot plug/drive  
sled mounted  
PID: A03-D073GC2  
Serial: D3B0P99001R9  
Presence: Equipped  
Local Disk 2:  
Product Name:  
Presence: Equipped  
Size (MB): Unknown  
Local Disk 5:  
Product Name: 73GB 6Gb SAS 15K RPM SFF HDD/hot plug/drive  
sled mounted  
Serial: D3B0P99001R9  
HW Rev: 0  
Size (MB): 70136
```

- A. The fault detection tests on the disk drive failed
- B. Communication between the fabric interconnects failed
- C. Communication between Cisco UCS Manager and the server failed
- D. The Cisco UCS B-Series Blade Server is connected incorrectly to the fabric interconnects

Answer: C

Explanation:

https://www.cisco.com/c/en/us/td/docs/unified_computing/ucs/ts/guide/UCSTroubleshooting/UCSTroubleshooting_chapter_0100.html

QUESTION 61

Refer to the exhibit. Interfaces Ethernet 7/1-8 are members of the CORE-SW1 VDC, and CORE- 7700-1 is the admin VDC. Which cause of the error is likely?

[300-615 Exam Dumps](#) [300-615 Exam Questions](#) [300-615 PDF Dumps](#) [300-615 VCE Dumps](#)

<https://www.braindump2go.com/300-615.html>

```
CORE-7700-1(config-vdc)# vdc FC-CORE-SW1 type storage
CORE-7700-1(config-vdc)# allocate shared interface ethernet
7/1-8
Ports that share the port group of the interfaces you have
specified will be affected as well. Continue (y/n)? [yes]
yes
ERROR: Ports being shared must belong to a vdc that has been
configured for fcoe sharing
```

- A. The FCoE VLANs associated to Ethernet 7/1-8 must be assigned to the FC-CORE-SW1 VDC in the admin VDCs.
- B. Interfaces Ethernet 7/1-8 must be configured for FCoE sharing.
- C. All the interfaces in the FC-CORE-SW1 VDC must be configured for FCoE sharing.
- D. The Fibre Channel VSANs associated to Ethernet 7/1-8 must be assigned to the FC- CORE-SW1 VDC in the admin VDCs.

Answer: A

QUESTION 62

Refer to the exhibit. HSRP adjacency fails to form between Nexus7K-1 and Nexus7K-2. Which action should be taken to solve the problem?

```
Nexus7K-1# show configuration interface
vlan50
interface Vlan50
  no shutdown
  ip address 10.35.164.2/25
  hsrp version 2
  hsrp 50
    preempt
    priority 150
    ip 10.35.164.1

Nexus7K-2# show configuration interface
vlan50
interface Vlan50
  no shutdown
  ip address 10.35.164.3/25
  hsrp 50
    preempt
    priority 50
    ip 10.35.164.1
```

- A. Configure preempt on one of the switches in the HSRP group.
- B. Configure the same HSRP priority between the two switches.
- C. Configure the correct subnet mask on Nexus7K-1.
- D. Configure HSRP version 2 on Nexus7K-2.

Answer: D

QUESTION 63

An engineer is troubleshooting a packet flow from an access leaf to spine. Which EVPN routes are expected on this connection?

- A. EVPN Type 1-5
- B. EVPN Type 0,9,15
- C. EVPN Type 9-15
- D. EVPN Type 0,16

Answer: A

QUESTION 64

Refer to the exhibit. Interface fc1/5 is offline. Which action should be taken to troubleshoot the issue?

```
switch# show interface fc1/5
fc1/5 is down (NPV upstream port not available)
Hardware is Fibre Channel, SFP is short wave laser w/o OFC (SN)
Port WWN is 20:47:00:0d:ac:a4:3b:83
Admin port mode is F, turnk mode is off
snmp link state traps are enabled
Port vsan is 100
    Receive data field Size is 2112
```

- A. Activate the correct zoneset for VSAN 100.
- B. Update the FLOGI database to contain the FLOGI entries for interface fc1/5 in VSAN 100.
- C. Update the FCNs database to contain names for VSAN 100.
- D. Configure the upstream ports and the server ports to be in VSAN 100.

Answer: D

QUESTION 65

Refer to the exhibit. A switch is being downgraded to an earlier release because of a problem with the current release. After the switch is downgraded, it can no longer forward traffic. Which action resolves the issue?

```
Nexus# show install all impact system bootflash:///n5000-uk9.7.1.4.N1.1.bin

<...>
Extracting "bios" version from image bootflash:/n5000-uk9.7.1.4.N1.1.bin.
[#####] 100% -- SUCCESS

Extracting "fexth" version from image bootflash:/n5000-uk9.7.1.4.N1.1.bin.
[#####] 100% -- SUCCESS

Recommended action::
"Module 1 3 might not be supported in the new image,
it should be powered off before proceeding with install".

Performing module support checks.
[#####] 100% -- SUCCESS

Compatibility check is done:
Module bootable Impact Install-type Reason
-----
1 no disruptive reset ISSD is not supported and switch will reset with ascii
configuration
3 no n/a n/a Incompatible image
105 yes disruptive reset ISSD is not supported and switch will reset with ascii
configuration

Nexus# show module
Mod Ports Module-Type Model Status
-----
1 32 02 32X10GE/Modular Universal Platfo N5K-C5548UP-SUP active *
3 0 02 Daughter Card with L3 ASIC N55-D160L3-V2 ok

Mod Sw Hw World-Wide-Name(s) (WWN)
-----
1 7.3(4) N1(1) 1.0 - -
3 7.3(4) N1(1) 1.0 - -

Nexus# show fex
FEX FEX FEX FEX Fex
Number Description State Model Serial
-----
105 FEX0105 Online N2K-C2248TP-1GE FOX1938GPUY
Nexus# sh incompatibility-all system bootflash:///n5000-uk9.7.1.4.N1.1.bin

The following configurations on active are incompatible with the system image

1) Service : nxapi, Capability : CAP_FEATURE_NXAPI
Description : NX-API is enabled.
Capability requirement : STRICT
Enable/Disable command : Disable NX-API with the command: "no feature nxapi"
```

- A. Enable ISSD after the downgrade is complete.
- B. Roll back to the original image.
- C. Reload the switch.
- D. Shut and no shut the interfaces to the FEX.

Answer: B

QUESTION 66

An engineer is implementing a storage VDC, but fails. Which two prerequisites must be in place before a storage VDC is implemented? (Choose two.)

[300-615 Exam Dumps](#) [300-615 Exam Questions](#) [300-615 PDF Dumps](#) [300-615 VCE Dumps](#)

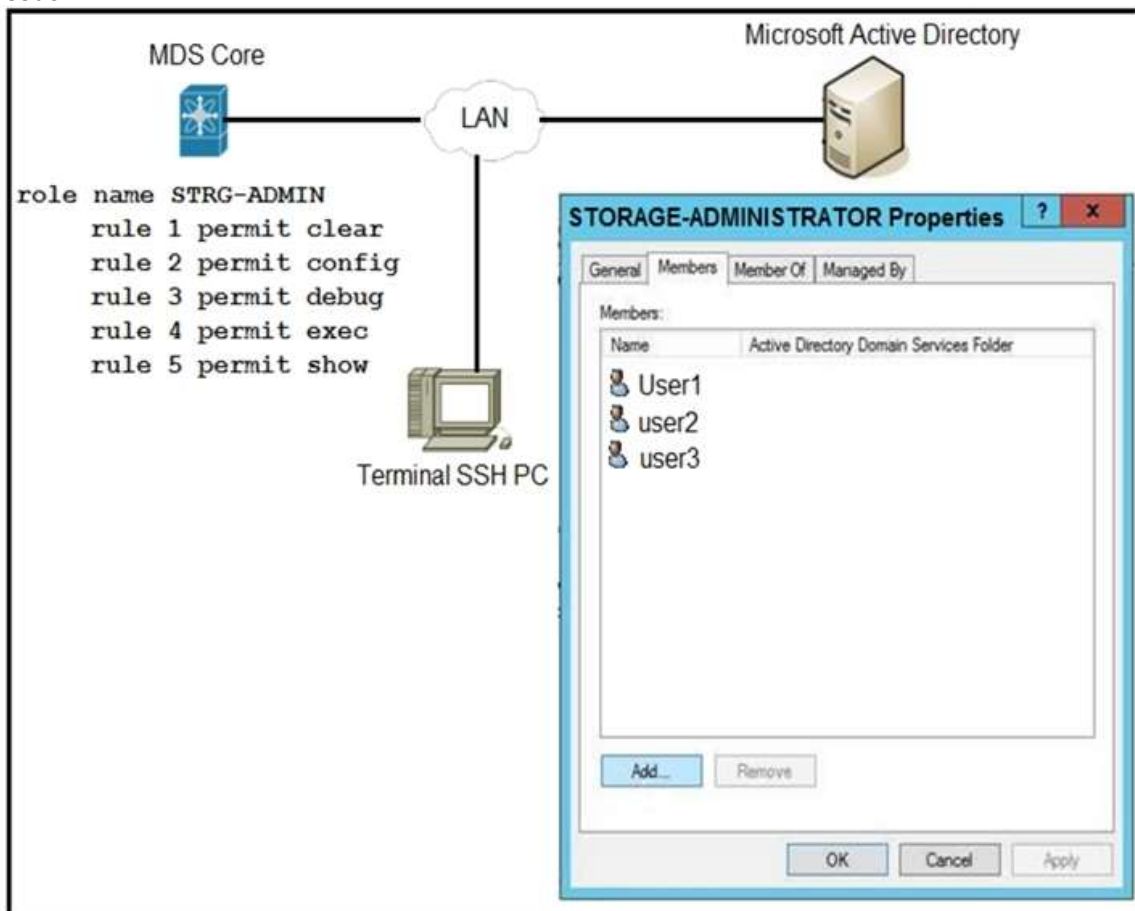
<https://www.braindump2go.com/300-615.html>

- A. M-Series module
- B. ESSENTIALS license
- C. STORAGE-ENT license
- D. FCoE license
- E. F-Series module

Answer: DE

QUESTION 67

Refer to the exhibit. An engineer is troubleshooting why user1, user2, and user3 from group STORAGE-ADMINISTRATOR in Microsoft Active Directory cannot log in to the Cisco MDS SSH CLI. Which action resolves the issue?



- A. Configure the role name to match the group name on Microsoft Active Directory.
- B. Include specific users into MDS role configuration.
- C. Configure SSH logins on Cisco MDS switch.
- D. Integrate Cisco MDS with Microsoft Active Directory.

Answer: A

QUESTION 68

Refer to the exhibit. An attempt to bind the Ethernet interface to vFC fails. Which action resolves the issue?


```
vlan 100
fcoe vsan 200

interface ethernet 1/1
  switchport
  switchport access vlan 100
  spanning-tree port type edge
  mtu 9216
  no shutdown
```

- A. Add the FCoE VLAN to the allowed VLAN list.
- B. Configure the FCoE VLAN that corresponds to the vFC VSAN as a private VLAN.
- C. Configure the interface as a trunk port.
- D. Configure the interface to use the native VLAN of the trunk port.

Answer: C

QUESTION 69

Refer to the exhibit. A new Cisco Nexus 5548 Switch connects to a network. SAN switching is configured on the switch. The switch fc2/10 NP uplink is shown in the exhibit. Which action ensures that fc2/10 is in an up state?

```
Test-5548-A# sh int fc2/10
fc2/10 is down (Initializing)
Hardware is Fibre Channel, SFP is short wave laser w/o OFC (SN)
Por WWN is 20:42:00:0d:fc:a5:3b:81
Admin port mode is NP, trunk mode is on
```

- A. Replace the SFP port module in fc2/10.
- B. Configure the admin port type E on the upstream switch that connects the port.
- C. Enable NPIV on the upstream switch that connects the port.
- D. Configure the BB_credit buffers on the upstream switch that connects the port.

Answer: C

QUESTION 70

A customer is troubleshooting FCoE in its network. They have discovered that vFC is currently down and there is no active STP port state on the bound Ethernet interface. What should the STP port state be to correct this issue?

- A. The bound interface should be in an STP forwarding state for the native VLAN only.
- B. The bound interface should be in an STP learning state for both the native VLAN and the member FCoE VLAN that is mapped to the active VSAN.
- C. The bound interface should be in an STP forwarding state for both the native VLAN and the member FCoE VLAN that is mapped to the active VSAN.
- D. The bound interface should be in an STP blocking state for both the native VLAN and the member FCoE VLAN that is mapped to the active VSAN.

Answer: C