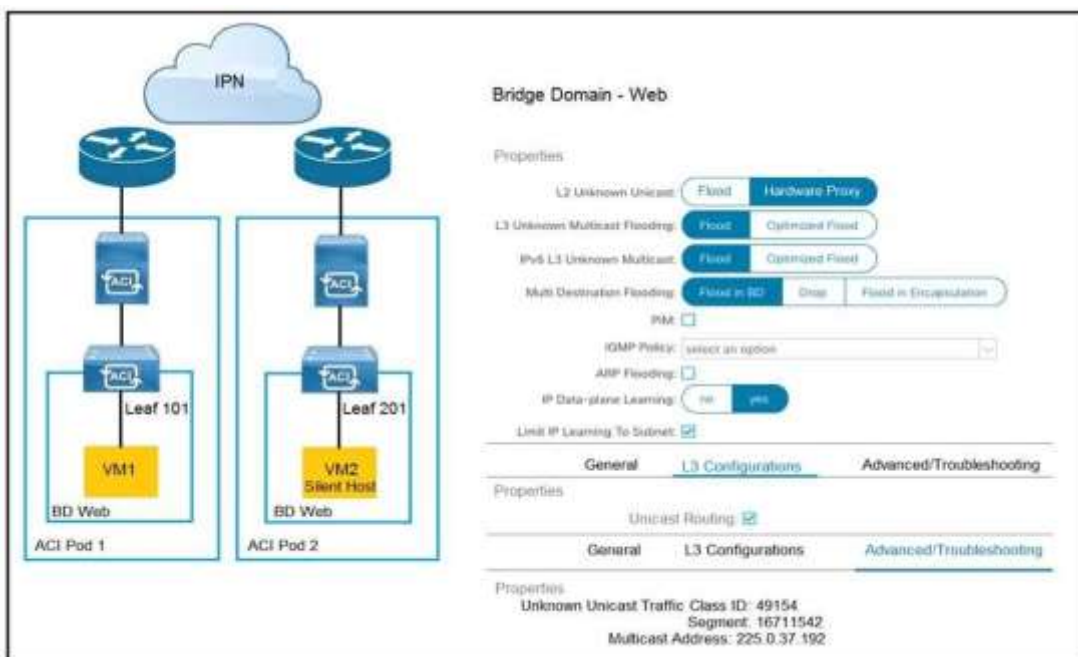


- **Vendor:** Cisco
- **Exam Code:** 300-630
- **Exam Name:** Implementing Cisco Application Centric Infrastructure - Advanced
- **New Updated Questions from** [Braindump2go](#)
- **(Updated in** [March/2021](#)**)**

[Visit Braindump2go and Download Full Version 300-630 Exam Dumps](#)

**Question:1**

Refer to the exhibit.



How is the ARP request from VM1 forwarded when VM2 is not learned in the Cisco ACI fabric?

- A. Leaf 101 forwards the ARP request to one of the proxy VTEP spines.
- B. POD1 spine responds to the ARP request after the POD1 COOP is updated with the VM2 location.
- C. Leaf101 encapsulates the ARP request into a multicast packet that is destined to 225.0.37.192.
- D. Leaf 101 switch consumes the ARP reply of VM2 to update the local endpoint table.

**Answer:A**

[300-630 Exam Dumps](#) [300-630 Exam Questions](#) [300-630 PDF Dumps](#) [300-630 VCE Dumps](#)

<https://www.braindump2go.com/300-630.html>

---

**Question:2**

---

Which approach does Cisco ACI use to achieve multidestination packet forwarding between leaf switches in the same fabric?

- A. Map VXLAN VTEP to the multicast group
- B. Map VXLAN to PIM-SM protocol
- C. Map VXLAN VNI to the multicast group
- D. Map VXLAN to PIM-DM protocol

---

**Answer: C**

---

---

**Question:3**

---

What does the VXLAN source port add to the overlay packet forwarding when it uses the hash of Layer 2, Layer 3, and Layer 4 headers of the inner packet?

- A. ECMP
- B. TCP optimization
- C. disabled fragmentation
- D. jumbo frames

---

**Answer: A**

---

Reference: <https://www.cisco.com/c/en/us/support/docs/l3-ipv4-switching/vlan/212682-virtual-extensible-lan-and-ethernet-virt.html>

---

**Question:4**

---

Which two actions are the Cisco best practices to configure NIC teaming load balancing for Cisco UCS B-Series blades that are connected to the Cisco ACI leaf switches? (Choose two.)

- A. Create vPC+
- B. Enable LACP active mode
- C. Create PAgP
- D. Create vPC
- E. Enable MAC pinning

---

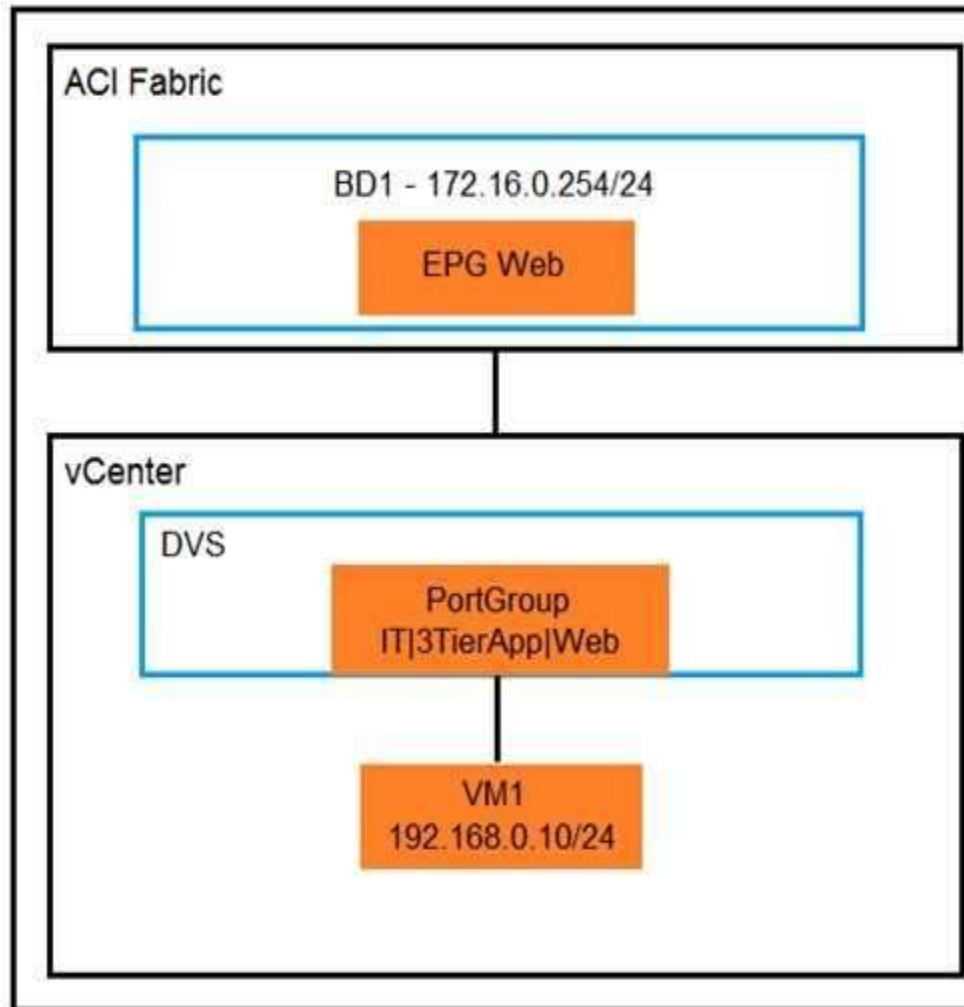
**Answer: BE**

---

---

**Question:5**

---



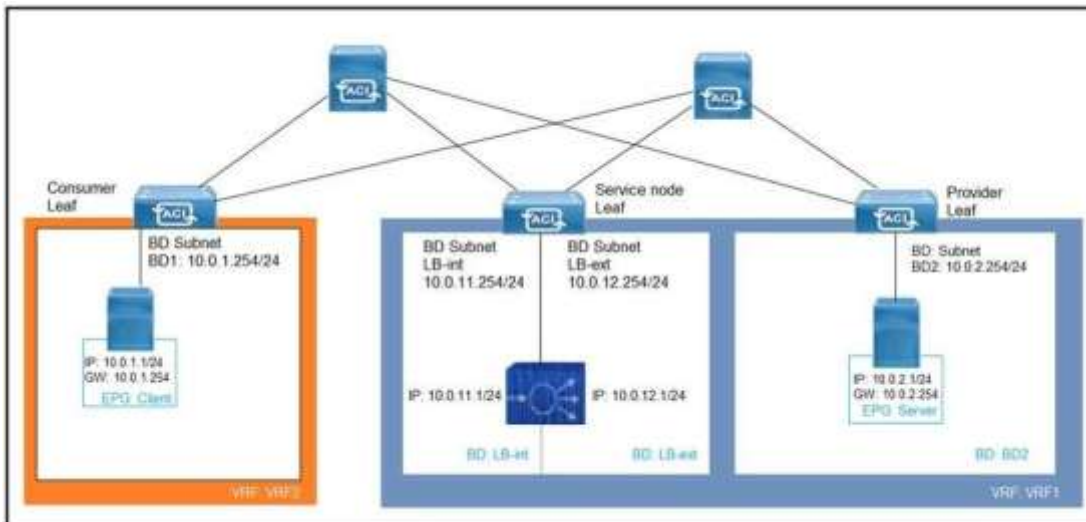
An organization migrates its virtualized servers from a legacy environment to Cisco ACI. VM1 is incorrectly attached to PortGroup IT|3TierApp|Web. Which action limits IP address learning in BD1?

- A. Enable Enforce Subnet Check
- B. Enable Rouge Endpoint Control
- C. Enable GARP-based EP Move Detection Mode
- D. Disable Remote EP Learn

**Answer: C**

**Question:6**

Refer to the exhibit.



What must be configured to allow the PBR node (LB-int) to monitor the availability of the endpoint that is in the EPG server?

- A. Endpoint Dataplane Learning
- B. Unicast Route disabled for client and server bridge domains
- C. PBR node tracking
- D. Direct Connect in the service graph template

---

**Answer: A**

---

### Question: 7

An engineer must limit local and remote endpoint learning to the bridge domain subnet. Which action should be taken inside the Cisco APIC?

- A. Disable Remote EP Learn
- B. Enable Enforce Subnet Check
- C. Disable Endpoint Dataplane Learning
- D. Enable Limit IP Learning to Subnet

---

**Answer: B**

---

Reference: <https://www.cisco.com/c/en/us/solutions/collateral/data-center-virtualization/application-centric-infrastructure/white-paper-c11-739989.html>

### Question: 8

What is the purpose of the Forwarding Tag (FTAG) in Cisco ACI?

- A. FTAG is used in Cisco ACI to add a label to the iVXLAN traffic in the fabric to apply the correct

[300-630 Exam Dumps](#) [300-630 Exam Questions](#) [300-630 PDF Dumps](#) [300-630 VCE Dumps](#)

<https://www.braindump2go.com/300-630.html>

policy.

- B. FTAG is used in Cisco ACI to add a label to the VXLAN traffic in the fabric to apply the correct policy.
- C. FTAG trees in Cisco ACI are used to load balance unicast traffic.
- D. FTAG trees in Cisco ACI are used to load balance mutli-destination traffic.

---

**Answer: D**

---

Reference: [https://www.cisco.com/c/en/us/td/docs/switches/datacenter/aci/apic/sw/1-x/aci-fundamentals/b\\_ACI-Fundamentals/b\\_ACI-Fundamentals\\_chapter\\_010010.html#concept\\_1E8BF286E1C043EF839D80935FDF9F50](https://www.cisco.com/c/en/us/td/docs/switches/datacenter/aci/apic/sw/1-x/aci-fundamentals/b_ACI-Fundamentals/b_ACI-Fundamentals_chapter_010010.html#concept_1E8BF286E1C043EF839D80935FDF9F50)

---

**Question:9**

---

DRAG DROP

A leaf receives unicast traffic that is destined to an unknown source, and spine proxy is enabled in the corresponding bridge domain. Drag and drop the Cisco ACI forwarding operations from the left into the order the operation occurs on the right.

**Answer Area**

Spine lookup occurs dMACi or dIPi	Step 1
Packet is sent out of the fabric	Step 2
Packet is routed in VRF overlay-1 based on dIPo	Step 3
Source leaf forwards the packet to anycast TEP encapsulated with VXLAN header	Step 4
Packet reaches destination leaf and is VXLAN decapsulated	Step 5

---

**Answer:**

---

**Answer Area**

Spine lookup occurs dMACi or dIPi

Source leaf forwards the packet to anycast TEP encapsulated with VXLAN header

Packet is sent out of the fabric

Spine lookup occurs dMACi or dIPi

Packet is routed in VRF overlay-1 based on dIPo

Packet is sent out of the fabric

Source leaf forwards the packet to anycast TEP encapsulated with VXLAN header

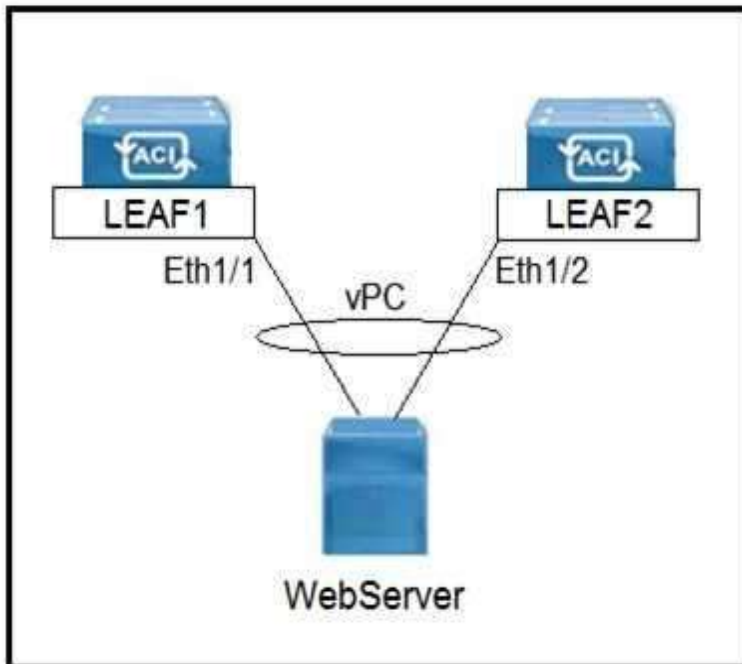
Packet reaches destination leaf and is VXLAN decapsulated

Packet reaches destination leaf and is VXLAN decapsulated

Packet is routed in VRF overlay based on dIPo

**Question: 10**

Refer to the exhibit.



Which three actions should be taken to implement the vPC in the Cisco ACI fabric? (Choose three.)

[300-630 Exam Dumps](#) [300-630 Exam Questions](#) [300-630 PDF Dumps](#) [300-630 VCE](#)

[Dumps https://www.braindump2go.com/300-630.html](https://www.braindump2go.com/300-630.html)

- A. Select a common vPC interface policy group
- B. Select individual interface profiles
- C. Select common interface profiles
- D. Select individual switch profiles
- E. Select common switch profiles

---

**Answer: ABE**

---

---

**Question: 11**

---

Which action should be taken in Cisco ACI to reassign a unique globally scoped pcTag to an EPG that provides a global contract?

- A. Configure subnets that are treated as virtual IP
- B. Configure subnets that advertise externally
- C. Configure subnets that are shared between VRFs
- D. Configure subnets that are private to VRF

---

**Answer: C**

---

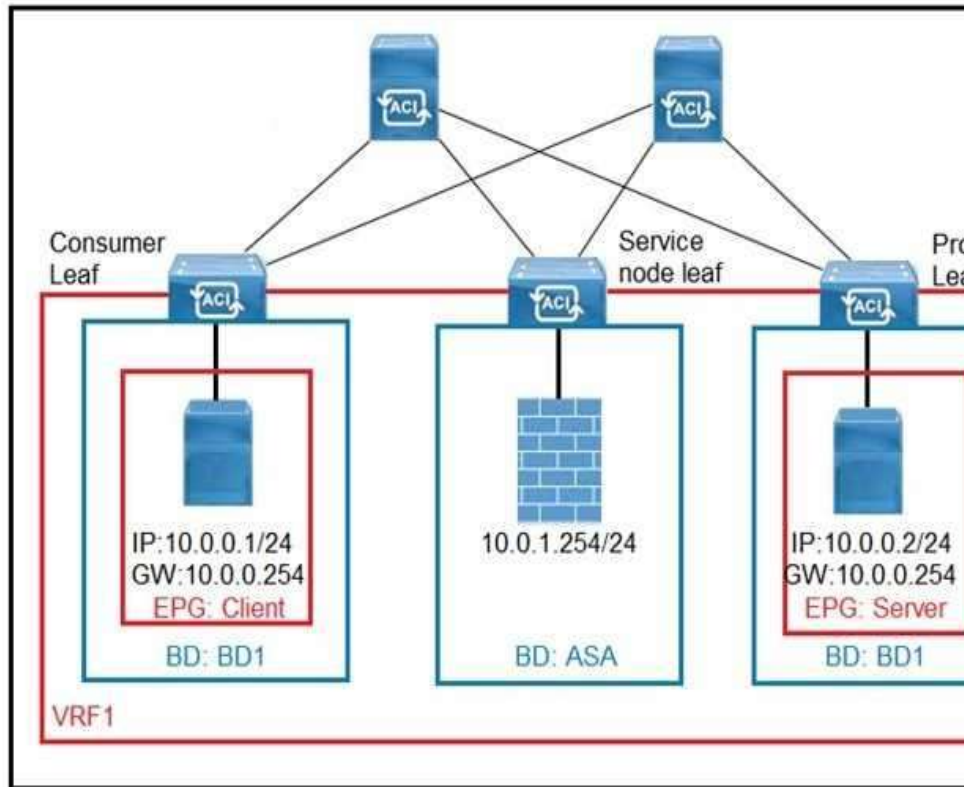
Reference: <https://www.cisco.com/c/en/us/support/docs/cloud-systems-management/application-policy-infrastructure-controller-apic/119023-techno e-apic-00.html>

---

**Question: 12**

---

Refer to the exhibit.



What must be configured in the service graph to redirect HTTP traffic between the EPG client and EPG server to go through the Cisco ASA firewall?

- A. contract filter to allow ARP and HTTP
- B. precise filter to allow only HTTP traffic
- C. contract with no filter
- D. permit-all contract filter

**Answer: A**

**Question: 13**

Refer to th exhibits.



Filter - SSH

Policy Fa

Properties

Name: SSH

Alias:

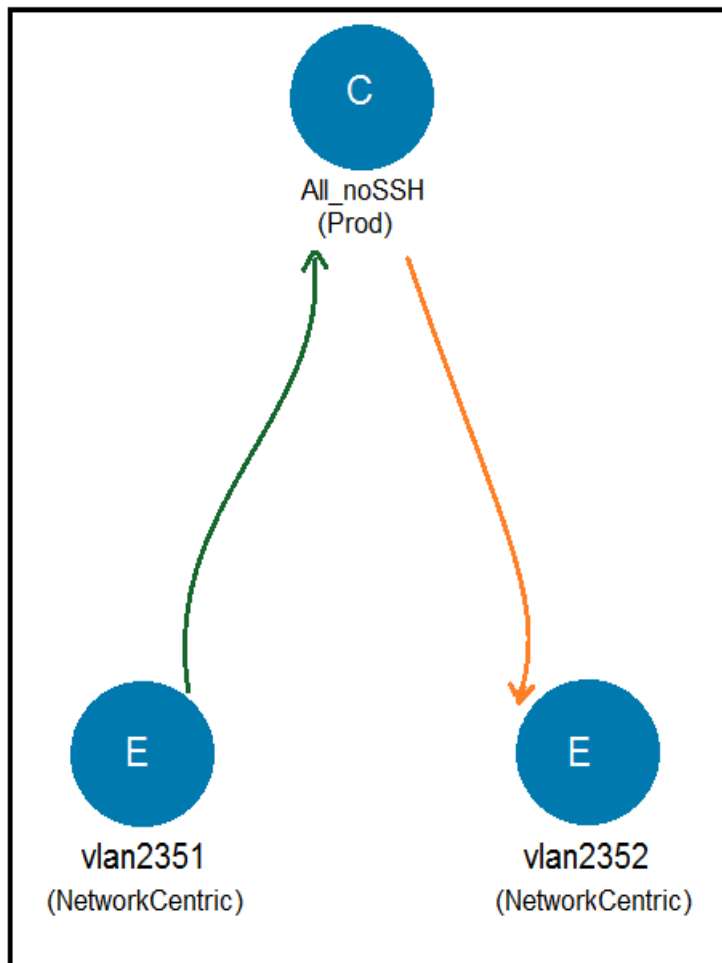
Description: optional

Tags:   
enter tags separated by comma

Global Alias:

Entries:

Name	Alias	EtherType	ARP Flag	IP Protocol	Match Only Fragme	Stateful	Source Port/Range	De
							From To	From
ssh	IP			tcp	False	False	unspecified unspecified	22



Which subject must be configured for the All\_noSSH contract to allow all IP traffic except SSH between the two EPGs?

A.

Apply Both Directions: false

Reverse Filter Ports:

Filters:

Name	Action	Priority
common/ip	permit	default level
Prod/SSH	Deny	highest prio

B.

Apply Both Directions: false

Reverse Filter Ports:

Filters:

Name	Action	Priority
common/ip	permit	default level
Prod/SSH	Deny	lowest prio

C.

Apply Both Directions: true

Reverse Filter Ports:

Filters:

Name	Tenant	Action	Priority
SSH	Prod	Deny	highest p
ip	common	permit	default lev

D.

Apply Both Directions: true

Reverse Filter Ports:

Filters:

Name	Tenant	Action	Priority
SSH	Prod	Deny	lowest p
ip	common	permit	default lev

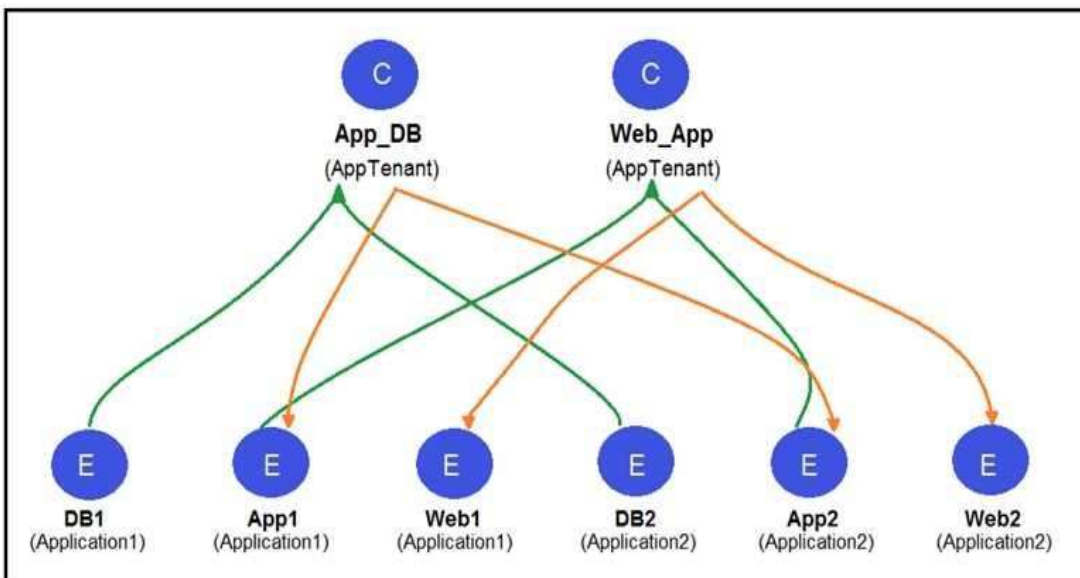
- A. Option A
- B. Option B
- C. Option C
- D. Option D

**Answer: D**

Reference: [https://www.cisco.com/c/en/us/td/docs/switches/datacenter/aci/apic/sw/1-x/ACI\\_Best\\_Practices/b\\_ACI\\_Best\\_Practices/b\\_ACI\\_Best\\_Practices\\_chapter\\_010.html](https://www.cisco.com/c/en/us/td/docs/switches/datacenter/aci/apic/sw/1-x/ACI_Best_Practices/b_ACI_Best_Practices/b_ACI_Best_Practices_chapter_010.html)

**Question: 14**

Refer to the exhibit.



Two application profiles are configured in the same tenant and different VRFs. Which contract scope is configured to allow communication between the two application profiles?

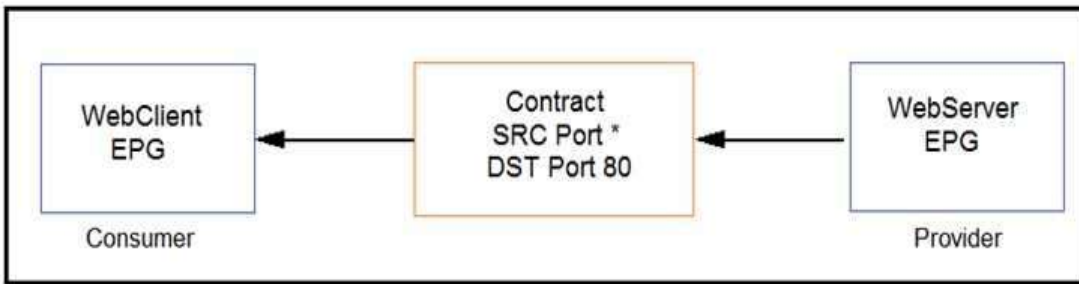
- A. global
- B. VRF
- C. application
- D. tenant

**Answer: D**

Reference: [https://www.cisco.com/c/en/us/td/docs/switches/datacenter/aci/apic/sw/1-x/Operating\\_ACI/guide/b\\_Cisco\\_Operating\\_ACI/b\\_Cisco\\_Operating\\_ACI\\_chapter\\_01000.html](https://www.cisco.com/c/en/us/td/docs/switches/datacenter/aci/apic/sw/1-x/Operating_ACI/guide/b_Cisco_Operating_ACI/b_Cisco_Operating_ACI_chapter_01000.html)

**Question: 15**

Refer to the exhibit.



Which combination of flags in the Cisco ACI contract allows a client in WebClient EPG to establish an HTTP connection toward a server in WebServer EPG?

- A. Apply Both Direction ENABLED and Reverse Port Filter ENABLED
- B. Apply Both Direction DISABLED and Reverse Port Filter DISABLED
- C. Apply Both Direction DISABLED and Reverse Port Filter ENABLED
- D. Apply Both Direction ENABLED and Reverse Port Filter DISABLED

**Answer: C**