

➤ **Vendor: Cisco**➤ **Exam Code: 300-730**➤ **Exam Name: Implementing Secure Solutions with Virtual Private Networks (SVPN)**➤ **New Updated Questions from [Braindump2go](#) (Updated in [May/2020](#))****[Visit Braindump2go and Download Full Version 300-730 Exam Dumps](#)****QUESTION 23**

Refer to the exhibit. Which two tunnel types produce the show crypto ipsec sa output seen in the exhibit? (Choose two.)

```
interface: Tunnell
  Crypto map tag: Tunnell-head-0, local addr 192.168.0.1

protected vrf: (none)
local ident (addr/mask/prot/port): (0.0.0.0/0.0.0.0/0/0)
remote ident (addr/mask/prot/port): (0.0.0.0/0.0.0.0/0/0)
current_peer 192.168.0.2 port 500
  PERMIT, flags={origin_is_acl,}
  #pkts encaps: 0, #pkts encrypt: 0, #pkts digest: 0
  #pkts decaps: 0, #pkts decrypt: 0, #pkts verify: 0
  #pkts compressed: 0, #pkts decompressed: 0
  #pkts not compressed: 0, #pkts compr. failed: 0
  #pkts not decompressed: 0, #pkts decompress failed: 0
  #send errors 0, #recv errors 0

local crypto endpt.: 192.168.0.1, remote crypto endpt.: 192.168.0.2
plaintext mtu 1438, path mtu 1500, ip mtu 1500, ip mtu idb GigabitEthernet1
current outbound spi: 0x3D05D003(1023791107)
PFS (Y/N): N, DH group: none
```

- A. crypto map
- B. DMVPN
- C. GRE
- D. FlexVPN
- E. VTI

Answer: BE**QUESTION 24**

Which two changes must be made in order to migrate from DMVPN Phase 2 to Phase 3 when EIGRP is configured? (Choose two.)

- A. Add NHRP shortcuts on the hub.
- B. Add NHRP redirects on the spoke.
- C. Disable EIGRP next-hop-self on the hub.
- D. Enable EIGRP next-hop-self on the hub.
- E. Add NHRP redirects on the hub.

Answer: CE**[300-730 Exam Dumps](#) **[300-730 Exam Questions](#) **[300-730 PDF Dumps](#) **[300-730 VCE Dumps](#)**********<https://www.braindump2go.com/300-730.html>**

QUESTION 25

Refer to the exhibit. A customer cannot establish an IKEv2 site-to-site VPN tunnel between two Cisco ASA devices. Based on the syslog message, which action brings up the VPN tunnel?

```
ASA-4-751015 Local:0.0.0.0:0 Remote:0.0.0.0:0 Username:Unknown SA request  
rejected by CAC. Reason: IN-NEGOTIATION SA LIMIT REACHED
```

- A. Reduce the maximum SA limit on the local Cisco ASA.
- B. Increase the maximum in-negotiation SA limit on the local Cisco ASA.
- C. Remove the maximum SA limit on the remote Cisco ASA.
- D. Correct the crypto access list on both Cisco ASA devices.

Answer: B

QUESTION 26

Refer to the exhibit. Which action is demonstrated by this debug output?

```
%LINK-3-UPDOWN: Interface Tunnel0, changed state to up  
NHRP: if_up: Tunnel0 proto 0  
NHRP: Tunnel0: Cache update for target 10.1.1.254/32 next-hop 10.1.1.254/32  
IPSEC-IFC GRE/Tu0(172.16.1.1/172.16.10.1): connection lookup returned 961D220  
NHRP: Attempting to send packet via DEST 10.1.1.25
```

- A. NHRP initial registration by a spoke.
- B. NHRP registration acknowledgement by the hub.
- C. Disabling of the DMVPN tunnel interface.
- D. IPsec ISAKMP phase 1 negotiation.

Answer: A

QUESTION 27

Which is used by GETVPN, FlexVPN and DMVPN?

- A. NHRP
- B. MPLS
- C. GRE
- D. ESP

Answer: D

QUESTION 28

Which IKEv2 feature minimizes the configuration of a FlexVPN on Cisco IOS devices?

- A. IKEv2 Suite-B
- B. IKEv2 proposals
- C. IKEv2 profiles
- D. IKEv2 Smart Defaults

Answer: D

QUESTION 29

Which two parameters help to map a VPN session to a tunnel group without using the tunnel-group list? (Choose two.)

[300-730 Exam Dumps](#) [300-730 Exam Questions](#) [300-730 PDF Dumps](#) [300-730 VCE Dumps](#)

<https://www.braindump2go.com/300-730.html>

- A. group-alias
- B. certificate map
- C. optimal gateway selection
- D. group-url
- E. AnyConnect client version

Answer: BD

QUESTION 30

Which method dynamically installs the network routes for remote tunnel endpoints?

- A. policy-based routing
- B. CEF
- C. reverse route injection
- D. route filtering

Answer: C

Explanation:

https://www.cisco.com/c/en/us/td/docs/ios-xml/ios/sec_conn_vpnnav/configuration/12-4t/sec-vpn-availability-12-4t-book/sec-rev-rte-inject.html

QUESTION 31

Which command identifies a Cisco AnyConnect profile that was uploaded to the flash of an IOS router?

- A. svc import profile SSL_profile flash:simos-profile.xml
- B. anyconnect profile SSL_profile flash:simos-profile.xml
- C. crypto vpn anyconnect profile SSL_profile flash:simos-profile.xml
- D. webvpn import profile SSL_profile flash:simos-profile.xml

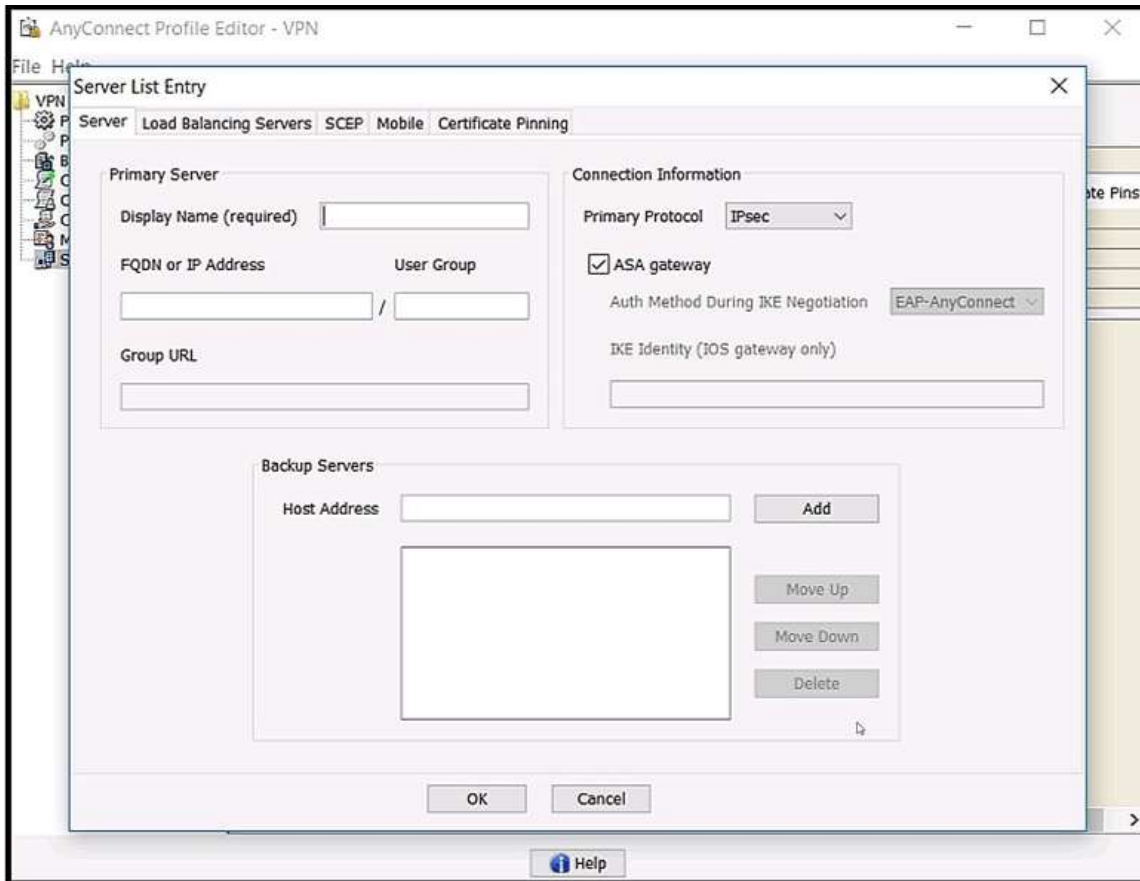
Answer: C

Explanation:

<https://www.cisco.com/c/en/us/support/docs/security/anyconnect-secure-mobility-client/200533-AnyConnect-Configure-Basic-SSLVPN-for-I.html>

QUESTION 32

Refer to the exhibit. Which value must be configured in the User Group field when the Cisco AnyConnect Profile is created to connect to an ASA headend with IPsec as the primary protocol?



- A. address-pool
- B. group-alias
- C. group-policy
- D. tunnel-group

Answer: D

Explanation:

https://www.cisco.com/c/en/us/td/docs/security/vpn_client/anyconnect/anyconnect41/administration/guide/b_AnyConnect_Administrator_Guide_4-1/configure-vpn.html

QUESTION 33

Refer to the exhibit. What is configured as a result of this command set?

```
aaa new-model
!
aaa authorization network local-group-author-list local
!
crypto pki trustpoint trustpoint1
  enrollment url http://192.168.3.1:80
  revocation-check crl
!
crypto pki certificate map certmap1 1
  subject-name co cisco
!
crypto ikev2 authorization policy author-policy1
  ipv6 pool v6-pool
  ipv6 dns 2001:DB8:1::11 2001:DB8:1::12
  ipv6 subnet-acl v6-acl
!
crypto ikev2 profile ikev2-profile1
  match certificate certmap1
  authentication local rsa-sig
  authentication remote rsa-sig
  pki trustpoint trustpoint1
  aaa authorization group cert list local-group-author-list
  author-policy1
  virtual-template 1
!
crypto ipsec transform-set transform1 esp-aes esp-sha-hmac
!
crypto ipsec profile ipsec-profile1
  set transform-set trans transform1
  set ikev2-profile ikev2-profile1
!
interface Ethernet0/0
  ipv6 address 2001:DB8:1::1/32
!
interface Virtual-Template1 type tunnel
  ipv6 unnumbered Ethernet0/0
  tunnel mode ipsec ipv6
  tunnel protection ipsec profile ipsec-profile1
!
ipv6 local pool v6-pool 2001:DB8:1::10/32 48
!
ipv6 access-list v6-acl
  permit ipv6 host 2001:DB8:1::20 any
  permit ipv6 host 2001:DB8:1::30 any
```

- A. FlexVPN client profile for IPv6
- B. FlexVPN server to authorize groups by using an IPv6 external AAA

- C. FlexVPN server for an IPv6 dVTI session
- D. FlexVPN server to authenticate IPv6 peers by using EAP

Answer: A

Explanation:

https://www.cisco.com/c/en/us/td/docs/ios-xml/ios/sec_conn_ike2vpn/configuration/xr-3s/sec-flex-vpn-xr-3s-book/sec-cfg-flex-clnt.html