

➤ **Vendor: Cisco**

➤ **Exam Code: 300-730**

➤ **Exam Name: Implementing Secure Solutions with Virtual Private Networks (SVPN)**

➤ **New Updated Questions from [Braindump2go](#) (Updated in [Nov./2020](#))**

[Visit Braindump2go and Download Full Version 300-730 Exam Dumps](#)

QUESTION 27

Which is used by GETVPN, FlexVPN and DMVPN?

- A. NHRP
- B. MPLS
- C. GRE
- D. ESP

Answer: D

QUESTION 28

Which IKEv2 feature minimizes the configuration of a FlexVPN on Cisco IOS devices?

- A. IKEv2 Suite-B
- B. IKEv2 proposals
- C. IKEv2 profiles
- D. IKEv2 Smart Defaults

Answer: D

QUESTION 29

Which two parameters help to map a VPN session to a tunnel group without using the tunnel-group list? (Choose two.)

- A. group-alias
- B. certificate map
- C. optimal gateway selection
- D. group-url
- E. AnyConnect client version

Answer: BD

QUESTION 30

Which method dynamically installs the network routes for remote tunnel endpoints?

- A. policy-based routing
- B. CEF
- C. reverse route injection
- D. route filtering

[300-730 Exam Dumps](#) [300-730 Exam Questions](#) [300-730 PDF Dumps](#) [300-730 VCE Dumps](#)

<https://www.braindump2go.com/300-730.html>

Answer: C

Explanation:

https://www.cisco.com/c/en/us/td/docs/ios-xml/ios/sec_conn_vpnav/configuration/12-4t/sec-vpn-availability-12-4t-book/sec-rev-rte-inject.html

QUESTION 31

Which command identifies a Cisco AnyConnect profile that was uploaded to the flash of an IOS router?

- A. svc import profile SSL_profile flash:simos-profile.xml
- B. anyconnect profile SSL_profile flash:simos-profile.xml
- C. crypto vpn anyconnect profile SSL_profile flash:simos-profile.xml
- D. webvpn import profile SSL_profile flash:simos-profile.xml

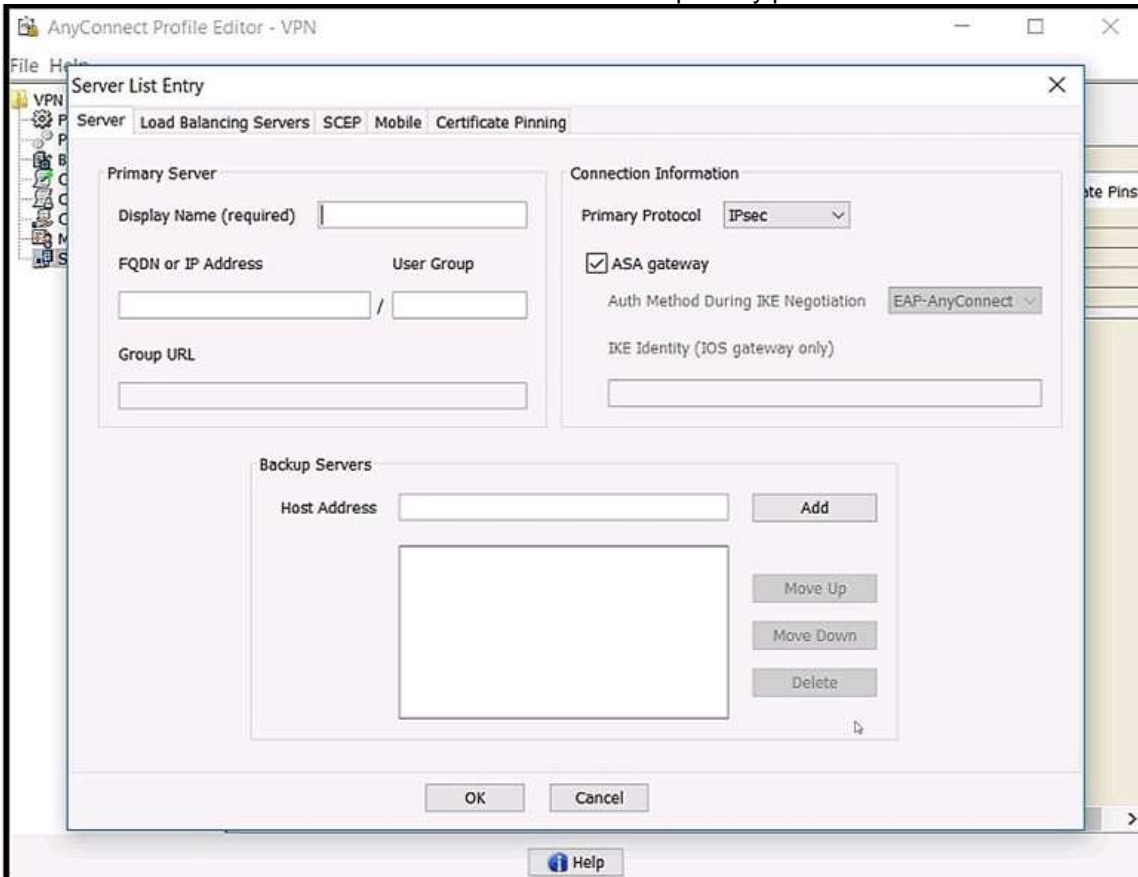
Answer: C

Explanation:

<https://www.cisco.com/c/en/us/support/docs/security/anyconnect-secure-mobility-client/200533-AnyConnect-Configure-Basic-SSLVPN-for-I.html>

QUESTION 32

Refer to the exhibit. Which value must be configured in the User Group field when the Cisco AnyConnect Profile is created to connect to an ASA headend with IPsec as the primary protocol?



- A. address-pool
- B. group-alias
- C. group-policy
- D. tunnel-group

Answer: D

Explanation:

[300-730 Exam Dumps](#) [300-730 Exam Questions](#) [300-730 PDF Dumps](#) [300-730 VCE Dumps](#)

<https://www.braindump2go.com/300-730.html>

https://www.cisco.com/c/en/us/td/docs/security/vpn_client/anyconnect/anyconnect41/administration/guide/b_AnyConnect_Administrator_Guide_4-1/configure-vpn.html

QUESTION 33

Refer to the exhibit. What is configured as a result of this command set?

```
aaa new-model
!
aaa authorization network local-group-author-list local
!
crypto pki trustpoint trustpoint1
  enrollment url http://192.168.3.1:80
  revocation-check crl
!
crypto pki certificate map certmap1 1
  subject-name co cisco
!
crypto ikev2 authorization policy author-policy1
  ipv6 pool v6-pool
  ipv6 dns 2001:DB8:1::11 2001:DB8:1::12
  ipv6 subnet-acl v6-acl
!
crypto ikev2 profile ikev2-profile1
  match certificate certmap1
  authentication local rsa-sig
  authentication remote rsa-sig
  pki trustpoint trustpoint1
  aaa authorization group cert list local-group-author-list
author-policy1
  virtual-template 1
!
crypto ipsec transform-set transform1 esp-aes esp-sha-hmac
!
crypto ipsec profile ipsec-profile1
  set transform-set trans transform1
  set ikev2-profile ikev2-profile1
!
interface Ethernet0/0
  ipv6 address 2001:DB8:1::1/32
!
interface Virtual-Template1 type tunnel
  ipv6 unnumbered Ethernet0/0
  tunnel mode ipsec ipv6
  tunnel protection ipsec profile ipsec-profile1
!
ipv6 local pool v6-pool 2001:DB8:1::10/32 48
!
ipv6 access-list v6-acl
  permit ipv6 host 2001:DB8:1::20 any
  permit ipv6 host 2001:DB8:1::30 any
```

- A. FlexVPN client profile for IPv6
- B. FlexVPN server to authorize groups by using an IPv6 external AAA

- C. FlexVPN server for an IPv6 dVTI session
- D. FlexVPN server to authenticate IPv6 peers by using EAP

Answer: A

Explanation:

https://www.cisco.com/c/en/us/td/docs/ios-xml/ios/sec_conn_ike2vpn/configuration/xr-3s/sec-flex-vpn-xr-3s-book/sec-cfg-flex-clnt.html

QUESTION 34

Which two types of web resources or protocols are enabled by default on the Cisco ASA Clientless SSL VPN portal? (Choose two.)

- A. HTTP
- B. ICA (Citrix)
- C. VNC
- D. RDP
- E. CIFS

Answer: DE

Explanation:

<https://www.cisco.com/c/en/us/td/docs/security/asa/asa94/config-guides/cli/vpn/asa-94-vpn-config/webvpn-configure-gateway.html>

QUESTION 35

Which configuration construct must be used in a FlexVPN tunnel?

- A. EAP configuration
- B. multipoint GRE tunnel interface
- C. IKEv1 policy
- D. IKEv2 profile

Answer: D

QUESTION 36

A Cisco AnyConnect client establishes a SSL VPN connection with an ASA at the corporate office. An engineer must ensure that the client computer meets the enterprise security policy. Which feature can update the client to meet an enterprise security policy?

- A. Endpoint Assessment
- B. Cisco Secure Desktop
- C. Basic Host Scan
- D. Advanced Endpoint Assessment

Answer: D

QUESTION 37

Refer to the exhibit. The customer can establish an AnyConnect connection on the first attempt only. Subsequent attempts fail. What might be the issue?

```
tunnel-group IKEV2 type remote-access
tunnel-group IKEV2 general-attributes
  address-pool split
  default-group-policy GroupPolicy1
tunnel-group IKEV2 webvpn-attributes
  group-alias ikev2 enable
```

```
-<HostEntry>
<HostName>ikev2</HostName>
<HostAddress>10.106.45.221</HostAddress>
<UserGroup>ikev2</UserGroup>
<PrimaryProtocol>IPsec</PrimaryProtocol>
</HostEntry>
```

- A. IKEv2 is blocked over the path.
- B. UserGroup must be different than the name of the connection profile.
- C. The primary protocol should be SSL.
- D. UserGroup must be the same as the name of the connection profile.

Answer: D