

➤ **Vendor: Cisco**➤ **Exam Code: 300-730**➤ **Exam Name: Implementing Secure Solutions with Virtual Private Networks (SVPN)**➤ **New Updated Questions from Braindump2go (Updated in June/2021)****Visit Braindump2go and Download Full Version 300-730 Exam Dumps****QUESTION 95**

An administrator is designing a VPN with a partner's non-Cisco VPN solution. The partner's VPN device will negotiate an IKEv2 tunnel that will only encrypt subnets 192.168.0.0/24 going to 10.0.0.0/24. Which technology must be used to meet these requirements?

- A. VTI
- B. crypto map
- C. GETVPN
- D. DMVPN

**Answer: B****QUESTION 96**

A company's remote locations connect to the data centers via MPLS. A new request requires that unicast and multicast traffic that exits in the remote locations be encrypted. Which non-tunneled technology should be used to satisfy this requirement?

- A. SSL
- B. FlexVPN
- C. DMVPN
- D. GETVPN

**Answer: D****QUESTION 97**

While troubleshooting, an engineer finds that the show crypto isakmp sa command indicates that the last state of the tunnel is MM\_KEY\_EXCH. What is the next step that should be taken to resolve this issue?

- A. Verify that the ISAKMP proposals match.
- B. Ensure that UDP 500 is not being blocked between the devices.
- C. Correct the peer's IP address on the crypto map.
- D. Confirm that the pre-shared keys match on both devices.

**Answer: C****QUESTION 98**

Which VPN technology must be used to ensure that routers are able to dynamically form connections with each other rather than sending traffic through a hub and be able to advertise routes without the use of a dynamic routing protocol?

**[300-730 Exam Dumps](#) [300-730 Exam Questions](#) [300-730 PDF Dumps](#) [300-730 VCE Dumps](#)**

**<https://www.braindump2go.com/300-730.html>**

- A. FlexVPN
- B. DMVPN Phase 3
- C. DMVPN Phase 2
- D. GETVPN

**Answer:** B

**QUESTION 99**

An administrator is setting up AnyConnect for the first time for a few users. Currently, the router does not have access to a RADIUS server. Which AnyConnect protocol must be used to allow users to authenticate?

- A. EAP-GTC
- B. EAP-MSCHAPv2
- C. EAP-MD5
- D. EAP-AnyConnect

**Answer:** D

**QUESTION 100**

Refer to the exhibit. DMVPN spoke-to-spoke traffic works, but it passes through the hub, and never sends direct spoke-to-spoke traffic. Based on the tunnel interface configuration shown, what must be configured on the hub to solve the issue?

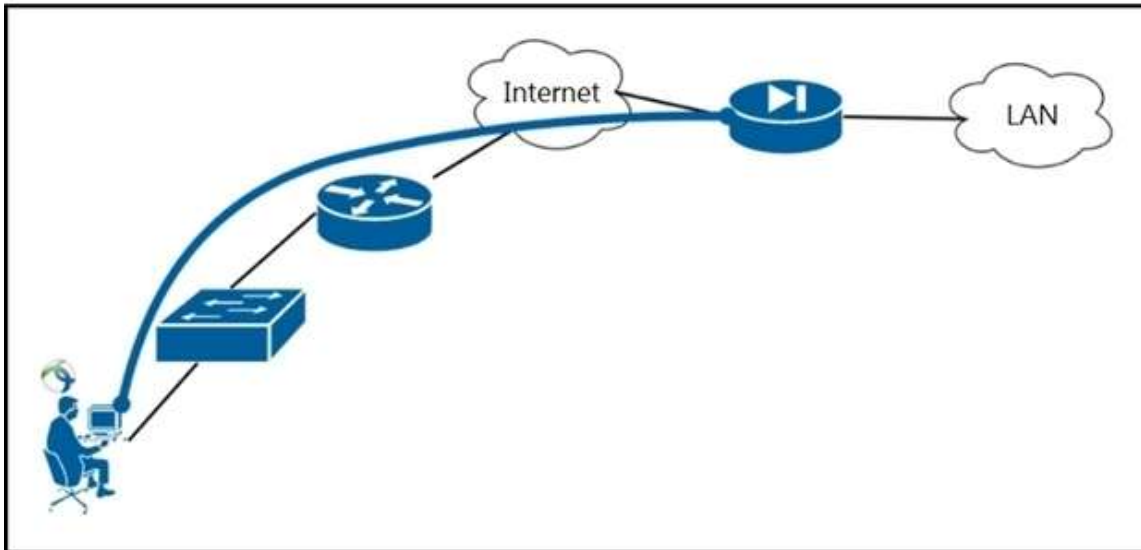
```
interface Tunnel0
ip address 192.168.1.1 255.255.255.0
no ip redirects
ip mtu 1440
ip nhrp map multicast dynamic
ip nhrp network-id 1
no ip split-horizon eigrp 90
ip next-hop-self eigrp 90
tunnel source FastEthernet0/0
tunnel mode gre multipoint
tunnel key 0
tunnel protection ipsec profile cisco
```

- A. Enable NHRP redirect.
- B. Enable split horizon.
- C. Enable IP redirects.
- D. Enable NHRP shortcut.

**Answer:** D

**QUESTION 101**

Refer to the exhibit. A user is connecting from behind a PC with a private IP Address. Their ISP provider is blocking TCP port 443. Which AnyConnect XML configuration will allow the user to establish a connection with the ASA?



- A. `<HostEntry>`  
     `<HostName>RAVPN</HostName>`  
     `<HostAddress>209.165.202.129</HostAddress>`  
     `<PrimaryProtocol>IPsec`  
         `<StandardAuthenticationOnly>>false</StandardAuthenticationOnly>`  
     `</PrimaryProtocol>`  
`</HostEntry>`
- B. `<HostEntry>`  
     `<HostName>RAVPN</HostName>`  
     `<HostAddress>209.165.200.225</HostAddress>`  
     `<PrimaryProtocol>IPsec`  
         `<StandardAuthenticationOnly>>false</StandardAuthenticationOnly>`  
     `</PrimaryProtocol>`  
`</HostEntry>`
- C. `<HostEntry>`  
     `<HostName>RAVPN</HostName>`  
     `<HostAddress>209.165.202.129</HostAddress>`  
`</HostEntry>`
- D. `<HostEntry>`  
     `<HostName>RAVPN</HostName>`  
     `<HostAddress>209.165.200.225</HostAddress>`  
`</HostEntry>`

**Answer: D**

#### QUESTION 102

Refer to the exhibit. Which two conclusions should be drawn from the DMVPN phase 2 configuration? (Choose two.)

[300-730 Exam Dumps](#) [300-730 Exam Questions](#) [300-730 PDF Dumps](#) [300-730 VCE Dumps](#)

<https://www.braindump2go.com/300-730.html>

```
interface Tunnel0
  ip address 172.16.1.1 255.255.255.0
  no ip redirects
  ip mtu 1440
  ip nhrp authentication cisco
  ip nhrp map multicast dynamic
  ip nhrp network-id 150
  no ip split-horizon eigrp 100
  no ip next-hop-self eigrp 100
  tunnel source GigabitEthernet0/0
  tunnel mode gre multipoint
  tunnel key 0
  tunnel protection ipsec profile cisco
```

- A. Next-hop-self is required.
- B. EIGRP neighbor adjacency will fail.
- C. EIGRP is used as the dynamic routing protocol.
- D. EIGRP route redistribution is not allowed.
- E. Spoke-to-spoke communication is allowed.

**Answer:** CE

**QUESTION 103**

Refer to the exhibit. The VPN tunnel between the FlexVPN spoke and FlexVPN hub 192.168.0.12 is failing. What should be done to correct this issue?

```
aaa authentication login default local
aaa authorization network Flex_AAA local

crypto ikev2 authorization policy Flex_Auth
  route set remote ipv4 10.0.0.0 255.255.255.0

crypto ikev2 proposal Crypto_Proposal
  encryption aes-cbc-256
  integrity sha256
  group 14

crypto ikev2 policy Crypto_Policy
  proposal Crypto_Proposal

crypto ikev2 keyring FlexKey
  peer any
    address 0.0.0.0 0.0.0.0
    pre-shared-key cisco
!

crypto ikev2 profile IKEv2_Profile
  match identity remote address 192.168.0.12 255.255.255.255
  authentication local pre-share
  authentication remote pre-share
  keyring local FlexKey
  aaa authorization group cert list Flex_AAA Flex_Auth

crypto ipsec transform-set TS esp-aes 256 esp-sha256-hmac
  mode tunnel

crypto ipsec profile FlexVPN_Ipsec
  set transform-set TS
  set ikev2-profile IKEv2_Profile

interface Tunnell
  ip address negotiated
  tunnel source GigabitEthernet1
  tunnel mode ipsec ipv4
  tunnel destination 192.168.0.12
  tunnel protection ipsec profile FlexVPN_Ipsec
```

- A. Add the address 192.168.0.12 255.255.255.255 command to the keyring configuration.
- B. Add the match fvr any command to the IKEv2 policy.
- C. Add the aaa authorization group psk list Flex\_AAA Flex\_Auth command to the IKEv2 profile configuration.
- D. Add the tunnel mode gre ip command to the tunnel configuration.

**Answer: C**

#### QUESTION 104

Refer to the exhibit. An IKEv2 site-to-site tunnel between an ASA and a remote peer is not building successfully. What will fix the problem based on the debug output?



```
*Dec 5 20:49:53.785: IKEv2:(SA ID = 1070):Failed to verify the proposed policies
*Dec 5 20:49:53.785: IKEv2:(SA ID = 1070):There was no IPSEC policy found for received TS

*Dec 5 20:49:53.785: IKEv2:(SA ID = 1070):
*Dec 5 20:49:53.785: IKEv2:(SA ID = 1070):SM Trace-> SA:
I_SPI=527FCACA776C4724 R_SPI=EFBD7D296CCB08CA (R) MsgID = 00000001
CurState: R VERIFY_AUTH Event: EV_TS UNACCEPT
*Dec 5 20:49:53.785: IKEv2:(SA ID = 1070):Sending TS unacceptable notify
```

- A. Ensure crypto IPsec policy matches on both VPN devices.
- B. Install the correct certificate to validate the peer.
- C. Correct crypto access list on both VPN devices.
- D. Specify the peer IP address in the tunnel group name.

**Answer: A**

#### QUESTION 105

Refer to the exhibit. A network engineer is reconfiguring clientless SSLVPN during a maintenance window, and after testing the new configuration, is unable to establish the connection. What must be done to remediate this problem?

```
webvpn
port 9443
enable outside
dtls port 9443
anyconnect-essentials
anyconnect image disk0:/anyconnect-win-4.9.03049-webdeploy-k9.pkg 3
anyconnect profiles vpn_profile_1 disk0:/vpn_profile_1.xml
anyconnect enable
tunnel-group-list enable
cache
disable
error-recovery disable
group-policy vpn_policy internal
group-policy vpn_policy attributes
dns-server value 192.168.1.3
vpn-tunnel-protocol ssl-client
address-pools value vpn_pool
```

- A. Enable client services on the outside interface.
- B. Enable clientless protocol under the group policy.
- C. Enable DTLS under the group policy.
- D. Enable auto sign-on for the user's IP address.

**Answer: B**

#### QUESTION 106

What are two purposes of the key server in Cisco IOS GETVPN? (Choose two.)

- A. to download encryption keys
- B. to maintain encryption policies
- C. to distribute routing information

- D. to encrypt data traffic
- E. to authenticate group members

**Answer:** BE

**QUESTION 107**

An engineer notices that while an employee is connected remotely, all traffic is being routed to the corporate network. Which split-tunnel policy allows a remote client to use their local provider for Internet access when working from home?

- A. tunnelall
- B. excludeall
- C. tunnelspecified
- D. excludespecified

**Answer:** C

**QUESTION 108**

In order to enable FlexVPN to use a AAA attribute list, which two tasks must be performed? (Choose two.)

- A. Define the RADIUS server.
- B. Verify that clients are using the correct authorization policy.
- C. Define the AAA server.
- D. Assign the list to an authorization policy.
- E. Set the maximum segment size.

**Answer:** BD

**QUESTION 109**

Which technology and VPN component allows a VPN headend to dynamically learn post NAT IP addresses of remote routers at different sites?

- A. DMVPN with ISAKMP
- B. GETVPN with ISAKMP
- C. DMVPN with NHRP
- D. GETVPN with NHRP

**Answer:** C

**QUESTION 110**

An engineer must configure remote desktop connectivity for offsite admins via clientless SSL VPN, configured on a Cisco ASA to Windows Vista workstations. Which two configurations provide the requested access? (Choose two.)

- A. Telnet bookmark via the Telnet plugin
- B. RDP2 bookmark via the RDP2 plugin
- C. VNC bookmark via the VNC plugin
- D. Citrix bookmark via the ICA plugin
- E. SSH bookmark via the SSH plugin

**Answer:** BE

**QUESTION 111**

A network engineer must design a clientless VPN solution for a company. VPN users must be able to access several internal web servers. When reachability to those web servers was tested, it was found that one website is not being rewritten correctly by the ASA. What is a potential solution for this issue while still allowing it to be a clientless VPN setup?

**[300-730 Exam Dumps](#) **[300-730 Exam Questions](#) **[300-730 PDF Dumps](#) **[300-730 VCE Dumps](#)********

**<https://www.braindump2go.com/300-730.html>**

- A. Set up a smart tunnel with the IP address of the web server.
- B. Set up a NAT rule that translates the ASA public address to the web server private address on port 80.
- C. Set up Cisco AnyConnect with a split tunnel that has the IP address of the web server.
- D. Set up a WebACL to permit the IP address of the web server.

**Answer:** A

**QUESTION 112**

Which two types of SSO functionality are available on the Cisco ASA without any external SSO servers? (Choose two.)

- A. SAML
- B. NTLM
- C. Kerberos
- D. OAuth 2.0
- E. HTTP Basic

**Answer:** BE

**QUESTION 113**

Refer to the exhibit. Which type of VPN implementation is displayed?

```
hostname RouterA
interface GigabitEthernet 0/0/0
ip address 10.0.0.1 255.255.255.0
standby 1 priority 110
standby ikev1-cluster
end

crypto ikev2 cluster
 standby-group ikev1-cluster
 slave max-session 500
 port 2000
 no shutdown

crypto ikev2 redirect gateway init
```

- A. IKEv1 cluster
- B. IKEv2 backup gateway
- C. IKEv2 load balancer
- D. IKEv2 reconnect

**Answer:** C



Exam B