

➤ **Vendor: Cisco**

➤ **Exam Code: 300-820**

➤ **Exam Name: Implementing Cisco Collaboration Cloud and Edge Solutions (CLCEI)**

➤ **New Updated Questions from [Braindump2go](#) (Updated in [Sep/2020](#))**

[Visit Braindump2go and Download Full Version 300-820 Exam Dumps](#)

QUESTION 1

Which two statements about Mobile and Remote Access certificate are true? (Choose two.)

- A. Expressway Core can use private CA signed certificate.
- B. You must upload the root certificates in the phone trust store.
- C. Expressway must generate certificate signing request.
- D. Expressway Edge must use public CA signed certificate.
- E. The Jabber client can work with public or private CA signed certificate.

Answer: CD

QUESTION 2

In a Mobile and Remote Access deployment, where must communications be encrypted with TLS?

- A. Cisco Expressway-E and endpoints outside the enterprise
- B. Cisco Expressway-C, Cisco Unified Communications Manager, and IM&P
- C. Cisco Expressway-C, Cisco Expressway-E, and Cisco Unified Communications Manager
- D. Cisco Expressway-C, Cisco Expressway-E, and endpoints outside the enterprise

Answer: A

QUESTION 3

What is the Cisco-recommended key length in bits for a Cisco Expressway certificate?

- A. 1024
- B. 2048
- C. 4096
- D. 8192

Answer: C

QUESTION 4

A company has enabled ICE to optimize call flows and improve video quality between their Cisco Collaboration endpoints internally and externally.

For which reason would you see activity on the TURN server when a call is established between two external endpoints?

- A. The video call is using encryption, which is not supported by ICE with CUCM 12.5
- B. ICE cannot reduce the packet loss on the link

[300-820 Exam Dumps](#) [300-820 Exam Questions](#) [300-820 PDF Dumps](#) [300-820 VCE Dumps](#)

<https://www.braindump2go.com/300-820.html>

- C. A STUN cannot punch holes in the firewall
- D. The video call is using 4K resolution, which is not supported by ICE with CUCM 12.5

Answer: A

QUESTION 5

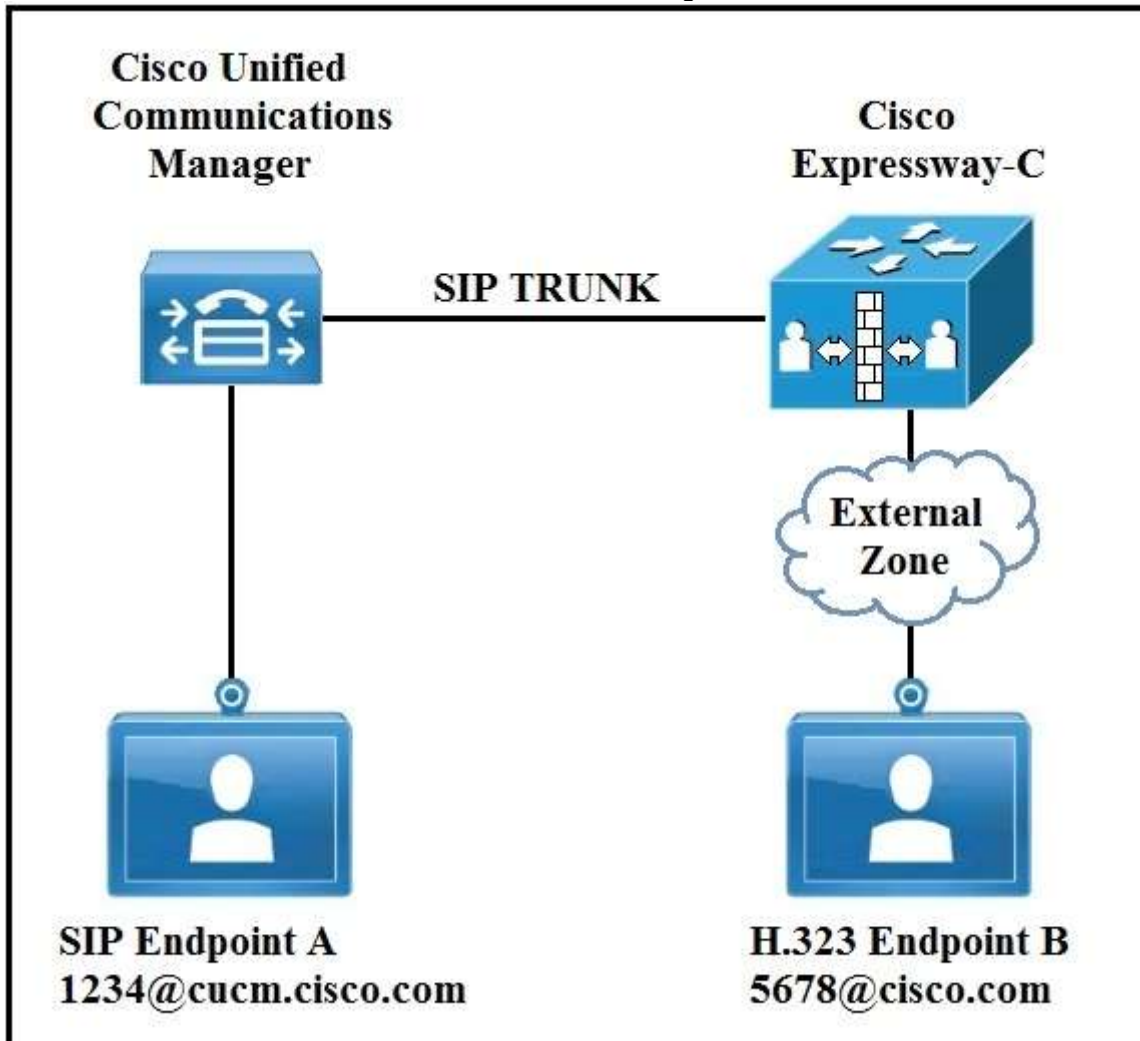
Where are voice calls handled in a Cisco Jabber hybrid cloud-based deployment with Cisco Webex Platform Service?

- A. Voice calls use Webex Calling platform for call control and use hybrid media nodes for local conferencing.
- B. Voice calls use local media nodes to keep traffic internal for internal traffic and use Webex Calling for external calls.
- C. Voice call use Cisco Unified Communications Manager for local calls and Webex Calling for external calls.
- D. Voice calls use local Cisco Unified Communications Manager for all calls.

Answer: D

QUESTION 6

Refer to the exhibit. In an environment SIP devices are registered to CUCM and H.323 devices to VCS.



What would be required to enable these calls to setup correctly?

- A. Create a presearch transform.

- B. Change the domain of SIP endpoint A to cisco.com.
- C. Disable SIP in the external zone.
- D. Change the interworking mode to On.

Answer: D

QUESTION 7

Refer to the exhibit. Which two numbers match the regular expression? (Choose two.)

`(\d{3}) (\d{3}) (\d{3}) (\d{3})`

- A. d20d16d20d22
- B. 2091652010224
- C. 209165200225
- D. d209d165d200d224
- E. 209165200224

Answer: CE

QUESTION 8

Which step is required when configuring cloud and hybrid deployments for Cisco Jabber?

- A. Add the Jabber user to Cisco Unity Connection.
- B. Add the Jabber user to Expressway-E.
- C. Add the Jabber user to Expressway-C.
- D. Add Jabber Users to the Cisco Webex Administration Tool.

Answer: D

QUESTION 9

Which two licenses are required for the B2B feature to work? (Choose two.)

- A. Traversal Server
- B. TURN Relays
- C. Rich Media Sessions
- D. Advanced Networking
- E. Device Provisioning

Answer: CE

QUESTION 10

An Expressway-E is configured using a single NIC with NAT.

How must the Expressway-C traversal client zone be configured to connect to the Expressway-E?

- A. TLS verify must be enabled.
- B. The zone profile must be set to default.
- C. The peer address must be the Expressway-E NAT address.
- D. The peer address must be the Expressway-E LAN 1 IP address.

Answer: C

QUESTION 11

Refer to the exhibit. An ISDN gateway is registered to Expressway-C with a prefix of 9 and/or it has a neighbor zone

[300-820 Exam Dumps](#) [300-820 Exam Questions](#) [300-820 PDF Dumps](#) [300-820 VCE Dumps](#)

<https://www.braindump2go.com/300-820.html>

specified that routes calls starting with a 9.

	Expressway-E
Rule name	Enter Block ISDN call for example
Description	Enter Block everything (including nonregistered endpoints)
Priority	Enter 41
Protocol	<i>Any</i>
Source	
Request must be authenticated	<i>No</i>
Mode	<i>Alias pattern match</i>
Pattern type	<i>Regex</i>
Pattern string	Enter (9\d+) (.*) (@example.com)
Pattern behavior	<i>Replace</i>
Replace string	Enter do-not-route-this-call for example
On successful match	<i>Stop</i>
Target	<i>TraversalZone</i>
State	<i>Enabled</i>

Which value should be entered into the "Source" field to prevent toll fraud regardless at origin of the call?

- A. Traversal Zone
- B. Any
- C. Neighbor Zone
- D. All

Answer: D

QUESTION 12

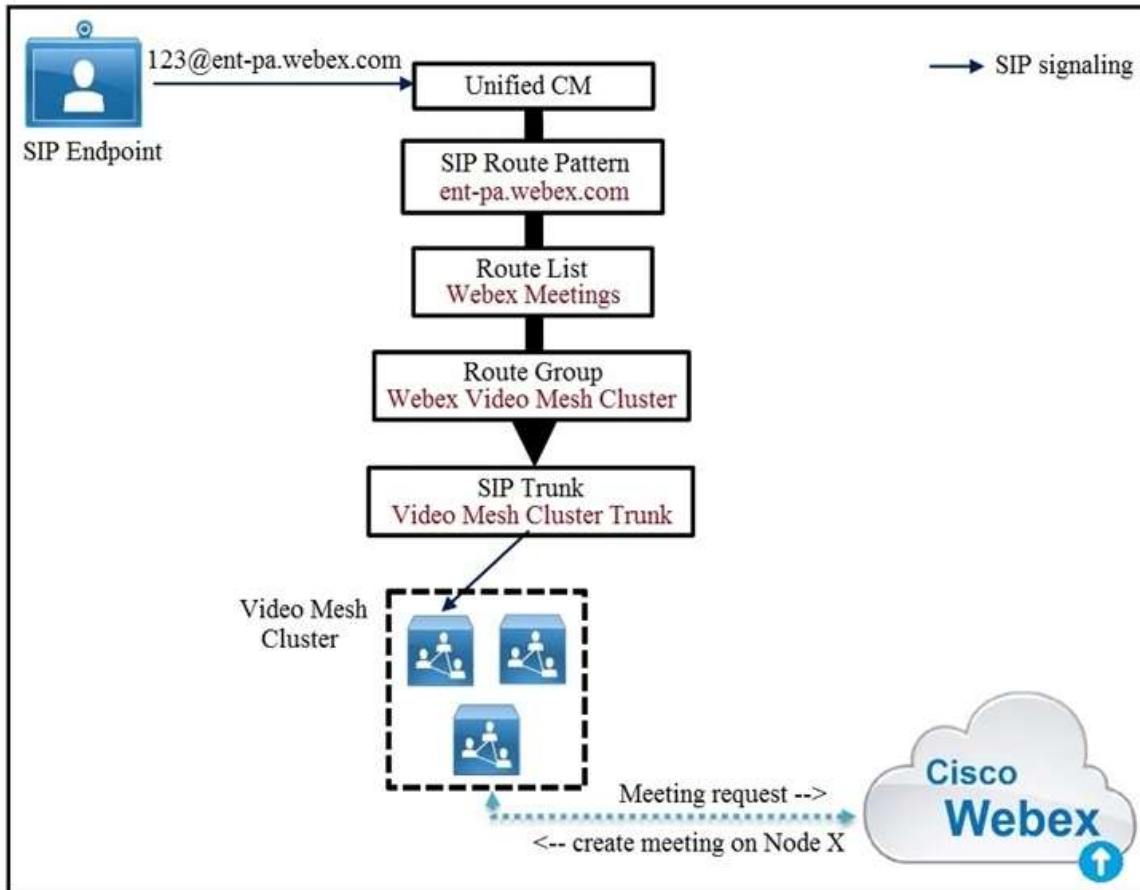
When determining why Mobile and Remote Access to Cisco TelePresence equipment does not work anymore for an organization. There are several administrators and configuration changes could have happened without anyone knowing. Internal communication seems to be working, but no external system can register or call anywhere. Gathering symptoms, you also discover that no internal systems can call out either. What is TraversalZone missing that causes this issue?

- A. link to the DefaultZone
- B. pipe to the DefaultZone
- C. SIP trunk to the DefaultZone
- D. route pattern to the DefaultZone

Answer: C

QUESTION 13

Refer to the exhibit. Cisco Unified Communications Manager routes the call via the Webex Meetings route list and route group to the Video Mesh cluster Node#1 in the Video Mesh cluster is hosting the meeting and has reached full capacity, but other nodes in the cluster still have spare capacity.



What happens to the participant's call?

- A. Another node in the cluster is used and an intra-cluster cascade between the two Video Mesh nodes is formed.
- B. The call is queued.
- C. The call fails.
- D. Another node in the cluster is used and an intra-cluster cascade between Webex and the new Video Mesh node is formed.

Answer: D

QUESTION 14

Refer to the exhibit. When a Jabber user attempts to connect from outside of the organization, the user enters the login information as "user@example.com" and receives the error "Cannot find your services Automatically". The engineer tries to resolve SRV records used by Jabber.

```
C:\Users\Administrator>nslookup
Default Server: Win2016-AD.example.com
Address: 192.168.10.10

> set type=all
> _cisco-uds._tcp.example.com4
Server: Win2016-AD.example.com
Address: 192.168.10.10

_cisco-uds._tcp.example.com      SRV service location:
        priority      = 10
        weight        = 10
        port          = 8443
        svr hostname  = cucm.example.com

> _collab-edge._tls.example.com
Server: Win2016-AD.example.com
Address: 192.168.10.10

_collab-edge._tls.example.com    SRV service location:
        priority      = 10
        weight        = 10
        port          = 8443
        svr hostname  = expressway-e.example.com

>
```

DNS A record "expressway-e.example.com" points to the Expressway-E IP and "cucm.example.com" points to the Cisco Unified Communications Manager.
Which change resolves the DNS problem?

- A. Change cisco-uds to point to the Expressway-E FQDN.
- B. Change the collab-edge record to point to 5061.
- C. Remove the cisco-uds SRV record for the external DNS.
- D. Change the priority of the SRV record for cisco-uds.

Answer: C

QUESTION 15

An organization wants to enable a Cisco Webex connector to synchronize all employees automatically with Cisco Webex instead of using a manual list.

Where is the Webex Hybrid Directory Service configured?

- A. Install Cisco Directory Connector on a Microsoft Windows Domain server and configure the software and Webex Control Hub.
- B. Enable the directory service in Cisco Unified Communications Manager under Cisco Unified Serviceability and add the service in Webex Control Hub.
- C. Enable the directory service on Cisco Expressway Edge for Office 365 or Cisco Expressway Core for internal Active Directory and add the service in Webex Control Hub.
- D. Install the Cisco Express Connector and configure the device in Cisco Unified Communications Manager under Cisco Unified Serviceability and add the service in Webex Control Hub.

Answer: A