

➤ **Vendor: Cisco**

➤ **Exam Code: 300-835**

➤ **Exam Name: Implementing Automation for Cisco Collaboration Solutions**

➤ **New Updated Questions from [Braindump2go](#) (Updated in [Sep/2020](#))**

**[Visit Braindump2go and Download Full Version 300-835 Exam Dumps](#)**

#### QUESTION 1

What are two key features of Cisco Unified Communications Manager Serviceability APIs? (Choose two.)

- A. save alarms and events for troubleshooting
- B. connect to serial console on phone hardware
- C. configure firewall rules on phone hardware
- D. scan servers and devices for malware
- E. real-time monitoring of components

**Answer: AE**

#### QUESTION 2

Which two files must be downloaded from a Cisco Unified Communications Manager server in order to build requests for the AXL API? (Choose two.)

- A. AXLEnums.xsd
- B. AXL\_CUCM.xsd
- C. AXLSOap.xsd
- D. CUCM\_AXL.json
- E. AXLWSDL.xml

**Answer: AC**

#### QUESTION 3

Which statement describes the function of the perfmonCollectCounterData operation used in the Cisco Unified Communications Manager Serviceability Perfmon API?

- A. It returns the Perfmon data for all counters that belong to an object on a particular host.
- B. It collects files from RTMT.
- C. It collects the Perfmon data for all counters that have been added with perfmonAddCounter to the session handle returned from perfmonOpenSession.
- D. It returns the list of available Perfmon objects and counters on a particular host.

**Answer: A**

#### QUESTION 4

Which two capabilities can be implemented in a custom application using the Cisco Unified IP Phone Services API? (Choose two.)

- A. Authenticate the phone to the network.
- B. Display corporate directory information.
- C. Play multicast messages.
- D. Upgrade phone firmware.
- E. Create new phone devices.

**Answer: CE**

#### QUESTION 5

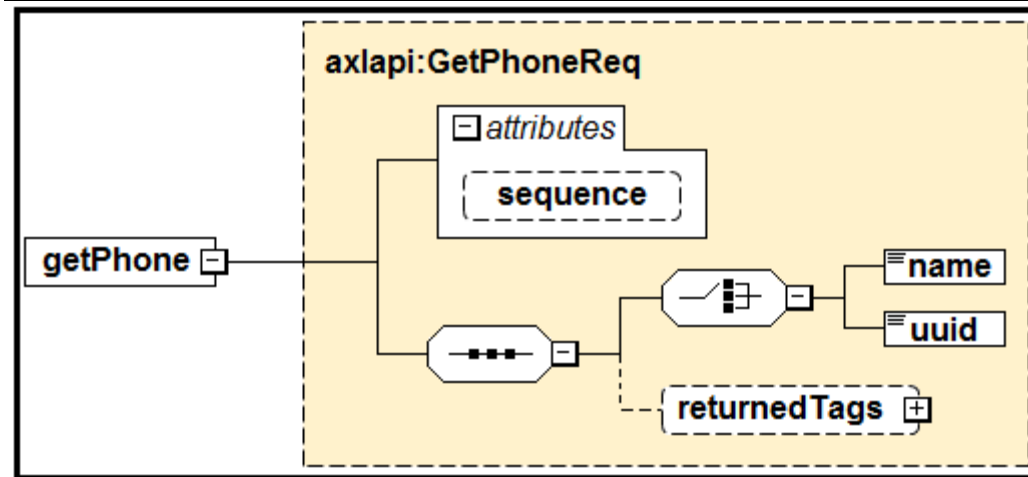
After the AXL query ns:updatePhone is used to upgrade a phone configuration successfully, the phone does not reflect the change. Which other method must be performed for the change to take effect?

- A. ns:getPhone
- B. ns:restartPhone
- C. ns:rebootPhone
- D. ns:savePhone

**Answer: B**

#### QUESTION 6

Refer to the exhibit. Based on the schema diagram in the exhibit, which two XML objects are valid AXL <getPhone> request <Body> elements? (Choose two.)

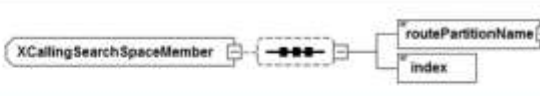
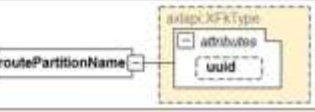
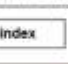


- A. `<soapenv:Body>  
 <ns:getPhone sequence="1">  
 <name>BOT209342098</name>  
 <returnedtags><model/></returnedtags>  
 </ns:getPhone>  
 </soapenv:Body>`
- B. `<soapenv:Body>  
 <ns:getPhone>  
 <name>BOT209342098</name>  
 <returnedTags><model/></returnedTags>  
 </ns:getPhone>  
 </soapenv:Body>`
- C. `<soapenv:Body>  
 <ns:getPhone>  
 <name>BOT209342098</name>  
 <uuid>{2B1931A2-8FC2-A0C2-7282-B88B5A6356A0}</uuid>  
 </ns:getPhone>  
 </soapenv:Body>`
- D. `<soapenv:Body>  
 <ns:getPhone sequence="1">  
 <uuid>{2B1931A2-8FC2-A0C2-7282-B88B5A6356A0}</uuid>  
 </ns:getPhone>  
 </soapenv:Body>`
- E. `<soapenv:Body>  
 <ns:getPhone sequence="1">  
 <name>BOT209342098</name>  
 <returnedTags>All</returnedTags>  
 </ns:getPhone>  
 </soapenv:Body>`

Answer: E

**QUESTION 7**

Refer to the exhibit. When a Calling Search Space is updated and a new member is added, how is a member defined?

complexType XCallingSearchSpaceMember													
diagram													
namespace	http://www.cisco.com/AXL/API/12.5												
children	routePartitionName index												
used by	elements XCas/members/member UpdateCasReq/removeMembers/member UpdateCasReq/addMembers/member UpdateCasReq/members/member												
source	<pre>&lt;xsd:complexType name="XCallingSearchSpaceMember"&gt;   &lt;xsd:sequence minOccurs="0"&gt;     &lt;xsd:element name="routePartitionName" type="axlapi:XfkType" minOccurs="1" maxOccurs="1"/&gt;     &lt;xsd:element name="index" type="axlapi:Xinteger" minOccurs="1" maxOccurs="1"/&gt;   &lt;/xsd:sequence&gt; &lt;/xsd:complexType&gt;</pre>												
element XCallingSearchSpaceMember/routePartitionName													
diagram													
type	axlapi:XfkType												
properties	content: complex												
attributes	<table border="1"> <thead> <tr> <th>Name</th> <th>Type</th> <th>Use</th> <th>Default</th> <th>Fixed</th> <th>Annotation</th> </tr> </thead> <tbody> <tr> <td>uuid</td> <td>axlapi:XUUID</td> <td>optional</td> <td></td> <td></td> <td></td> </tr> </tbody> </table>	Name	Type	Use	Default	Fixed	Annotation	uuid	axlapi:XUUID	optional			
Name	Type	Use	Default	Fixed	Annotation								
uuid	axlapi:XUUID	optional											
source	<pre>&lt;xsd:element name="routePartitionName" type="axlapi:XfkType" minOccurs="1" maxOccurs="1"/&gt;</pre>												
element XCallingSearchSpaceMember/routePartitionName/index													
diagram													
type	axlapi:Xinteger												
properties	content: simple												
attributes	<table border="1"> <thead> <tr> <th>Name</th> <th>Type</th> <th>Use</th> <th>Default</th> <th>Fixed</th> <th>Annotation</th> </tr> </thead> <tbody> <tr> <td>uuid</td> <td>axlapi:XUUID</td> <td>optional</td> <td></td> <td></td> <td></td> </tr> </tbody> </table>	Name	Type	Use	Default	Fixed	Annotation	uuid	axlapi:XUUID	optional			
Name	Type	Use	Default	Fixed	Annotation								
uuid	axlapi:XUUID	optional											
source	<pre>&lt;xsd:element name="index" type="axlapi:Xinteger" minOccurs="1" maxOccurs="1"/&gt;</pre>												

- A. 

```
<member uuid="{F6E0CD00-EC18-F16D-32E1-80C9A7A3D602}">
  <routePartitionName uuid="{5F2B2FFD-C7D2-4F30-9EF5-60110B56B939}">pt_translation-
    pattern_n</routePartitionName>
  <index>1</index>
</member>
```
- B. 

```
<member uuid="{F6E0CD00-EC18-F16D-32E1-80C9A7A3D602}">
  <routePartitionName>
    <uuid="{5F2B2FFD-C7D2-4F30-9EF5-60110B56B939}"</uuid>
    <name>pt_translation-pattern_n</name>
  </routePartitionName>
  <index>1</index>
</member>
```
- C. 

```
<member>
  <routePartitionName uuid="{5F2B2FFD-C7D2-4F30-9EF5-60110B56B939}">pt_translation-
    pattern_n</routePartitionName>
  <index>1</index>
</member>
```
- D. 

```
<member">
  <routePartitionName uuid="{5F2B2FFD-C7D2-4F30-9EF5-60110B56B939}">
    <name>pt_translation-pattern_n</name>
  </routePartitionName>
  <index>1</index>
</member>
```

Answer: D

#### QUESTION 8

Which two use cases can be accomplished using the Finesse JavaScript library? (Choose two.)

- A. Integrate customer relationship management capabilities into the Finesse agent desktop.
- B. Build a custom browser-based agent desktop.
- C. Build a Finesse gadget to add quick dial to the Finesse agent desktop.
- D. Build a Finesse gadget to create new agents on the Finesse system.
- E. Build a Finesse gadget to configure Finesse log levels for the Finesse administrator console.

Answer: AB

#### QUESTION 9

How is a message created using Webex Teams REST APIs?

- A. POST https://api.ciscospark.com/v1/messages/{messageID}
- B. POST https://api.ciscospark.com/v1/messages/
- C. GET https://api.ciscospark.com/v1/messages/
- D. PUT https://api.ciscospark.com/v1/messages/

Answer: B

#### QUESTION 10

When a Webex site has single-sign-on enabled, which type of data is required in the body element of an AuthenticateUser XML API Request?

- A. Webex username and password
- B. Webex Teams OAuth access token
- C. JWT token
- D. BOT access token

Answer: B

#### QUESTION 11

[300-835 Exam Dumps](https://www.braindump2go.com) [300-835 Exam Questions](https://www.braindump2go.com) [300-835 PDF Dumps](https://www.braindump2go.com) [300-835 VCE Dumps](https://www.braindump2go.com)

<https://www.braindump2go.com/300-835.html>

Refer to the exhibit. Which snippet of code does a user with the administrator role use in the missing "body" section to create a new user in a Webex Teams organization?

```
import requests

def createUser(apiKey, email, firstName, lastName, displayName):
    url = "https://api.ciscospark.com/v1/people"
    headers = {
        'Authorization': "Bearer " + apiKey,
        'Content-Type': "application/json"
    }
    body = {
        
    }
    response = requests.post(url = url, headers = headers, json=body)
    return response
```

- A. "displayName": displayName,  
"firstName": firstName,  
"lastName": lastName
- B. "emails": {  
    email  
},  
"displayName": displayName,  
"firstName": firstName,  
"lastName": lastName
- C. "email": email,  
"displayName": displayName,  
"firstName": firstName,  
"lastName": lastName
- D. "emails": [  
    email  
],  
"displayName": displayName,  
"firstName": firstName,  
"lastName": lastName

Answer: C

**QUESTION 12**

A Webex Teams bot receives a Webhook payload, which notifies the bot that a message was created in a space. Which two API requests must be issued for the bot to answer the author of the message? (Choose two.)

- A. POST /v1/messages
- B. GET /v1/messages/{messageId}
- C. GET /v1/webhooks/{webhookId}
- D. PUT /v1/messages/{messageId}
- E. POST /v1/webhooks

Answer: CE

**QUESTION 13**

Refer to the exhibit. The code includes the beginning of a short Python script that is constructed to notify the guard in case of an intruder alert. Which code snippet completes the script?

```
import requests

token = 'YzE1NTNiMjEtYzc0ZC00MjE2LWI5ZD_leb65fdf-9643-417f-9974-ad72cat0e10f'
room = 'Y2lzY29zcGFyazovL3VzLlJPT00BmNy0zY2NkLTg4Y2UtNDQwOWJmODBjNWE0'
```

- A. request.put('https://api.ciscospark.com/v1/rooms' + room,  
    headers = {'Authorization': 'Bearer' + token },  
    data = {  
        'toPersonEmail' : 'guard2319@perimeter.net',  
        'html' : '<b>Warning!</b> Intruder alert in Section 12'  
    }  
)
- B. request.post('https://api.ciscospark.com/v1/messages',  
    headers = {'Authorization': 'Bearer' + token },  
    data = {  
        'roomId' : 'Perimeter Guard Space',  
        'markdown' : '\*\*Warning!\*\* Intruder alert in Section 12'  
    }  
)

```
C. request.post('https://api.ciscospark.com/v1/ rooms' + room,
  headers = {'Authorization': 'Bearer' + token },
  data = {
    'text' : 'Warning! Intruder alert in Section 12'
    'markdown' : '**Warning!** Intruder alert in Section 12'
  }
)

D. request.post('https://api.ciscospark.com/v1/messages' ,
  headers = {'Authorization': 'Bearer' + token },
  data = {
    'toPersonEmail' : 'guard2319@perimeter.net',
    'markdown' : '**Warning!** Intruder alert in Section 12'
  }
)
```

**Answer:** A

**QUESTION 14**

Which two functions are provided by the Java-based computer telephony applications API? (Choose two.)

- A. Provide call blocking and screening for applications.
- B. Provide analytics about Cisco Unified Communications Manager endpoints and users.
- C. Control and observe Cisco Unified Communications Manager phones.
- D. Route calls by using computer telephony integration ports and route points (virtual devices).
- E. Allow provisioning of Cisco Unified Communications Manager endpoints and users.

**Answer:** DE

**QUESTION 15**

Which type of endpoint is used by the Cisco Unified JTAPI implementation in Cisco Unified Communications Manager?

- A. gateways
- B. gatekeepers
- C. phones
- D. SIP trunks

**Answer:** C