

➤ **Vendor:** Cisco

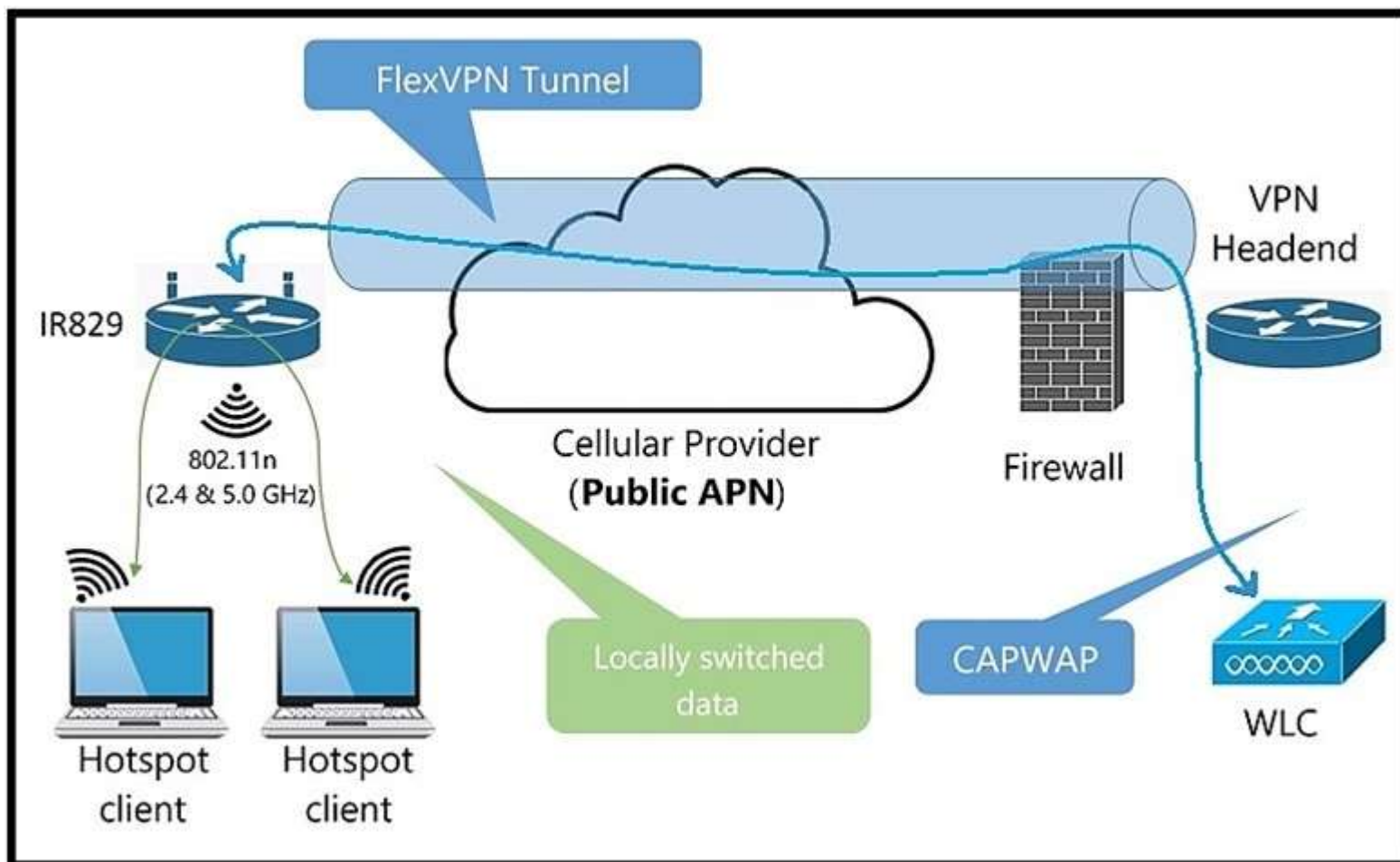
➤ **Exam Code:** 300-915

➤ **Exam Name:** Developing Solutions using Cisco IoT and Edge Platforms (DEVIOT)

➤ **New Updated Questions from** [Braindump2go](https://www.braindump2go.com) **(Updated in August/2020)**

Visit Braindump2go and Download Full Version 300-915 Exam Dumps

QUESTION 38



Refer to the exhibit. Which protocol is used to make a FlexVPN connection from a Cisco IR829 router to a headend router?

- A. SSL
- B. IKEv2
- C. NAT
- D. IS-IS

Correct Answer: B

QUESTION 39

Which method is used to gather data from a sensor?

- A. Configure the edge application to push data to the cloud.
- B. Set up a rendezvous point where the sensor and edge application meet.
- C. Set up a dedicate process for each sensor that grabs data.
- D. Pull data from the sensor.

Correct Answer: A

QUESTION 40

DRAG DROP

Drag and drop the tasks from the left into the correct order on the right for transporting data from sensors to the cloud, in order to extract the machine data and use the cloud-based analytics for predictive maintenance.

Select and Place:

Develop a dashboard for data consumption based on business needs.	
Remove duplicates and send filtered data to cloud.	
Extract information from OPC using custom drivers or DLink.	
Interface the machine sensors using OPC based middleware.	
Process real time critical alerts for immediate action.	

Correct Answer:

Develop a dashboard for data consumption based on business needs.	Develop a dashboard for data consumption based on business needs.
Remove duplicates and send filtered data to cloud.	Interface the machine sensors using OPC based middleware.
Extract information from OPC using custom drivers or DLink.	Extract information from OPC using custom drivers or DLink.
Interface the machine sensors using OPC based middleware.	Remove duplicates and send filtered data to cloud.
Process real time critical alerts for immediate action.	Process real time critical alerts for immediate action.

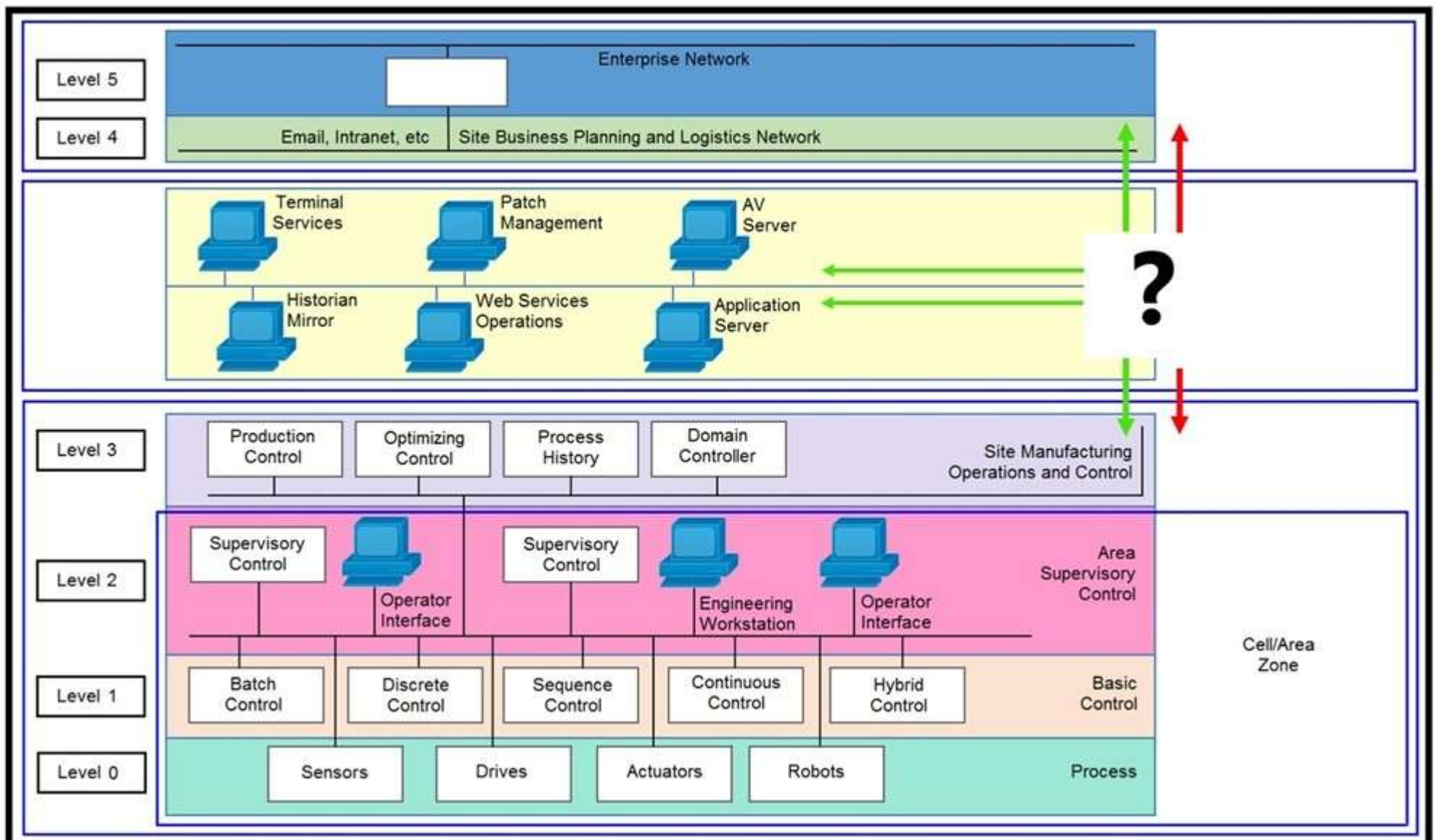
QUESTION 41

Which element ensures that PKI is used to establish the identity of IoT devices?

- A. unique device identifier
- B. encryption key
- C. air gap
- D. hashed routes

Correct Answer: A

QUESTION 42



Refer to the exhibit. Which product must be positioned where the “?” is placed to connect these different network levels?

- A. firewall
- B. switch
- C. router
- D. wireless access port

Correct Answer: C

QUESTION 43

Which computer security concept is violated when a web server is written that uses the “root” account for all interactions with a Linux system?

- A. principle of least privilege
- B. PermitRootLogin
- C. certificate-based authentication
- D. RBAC

Correct Answer: A

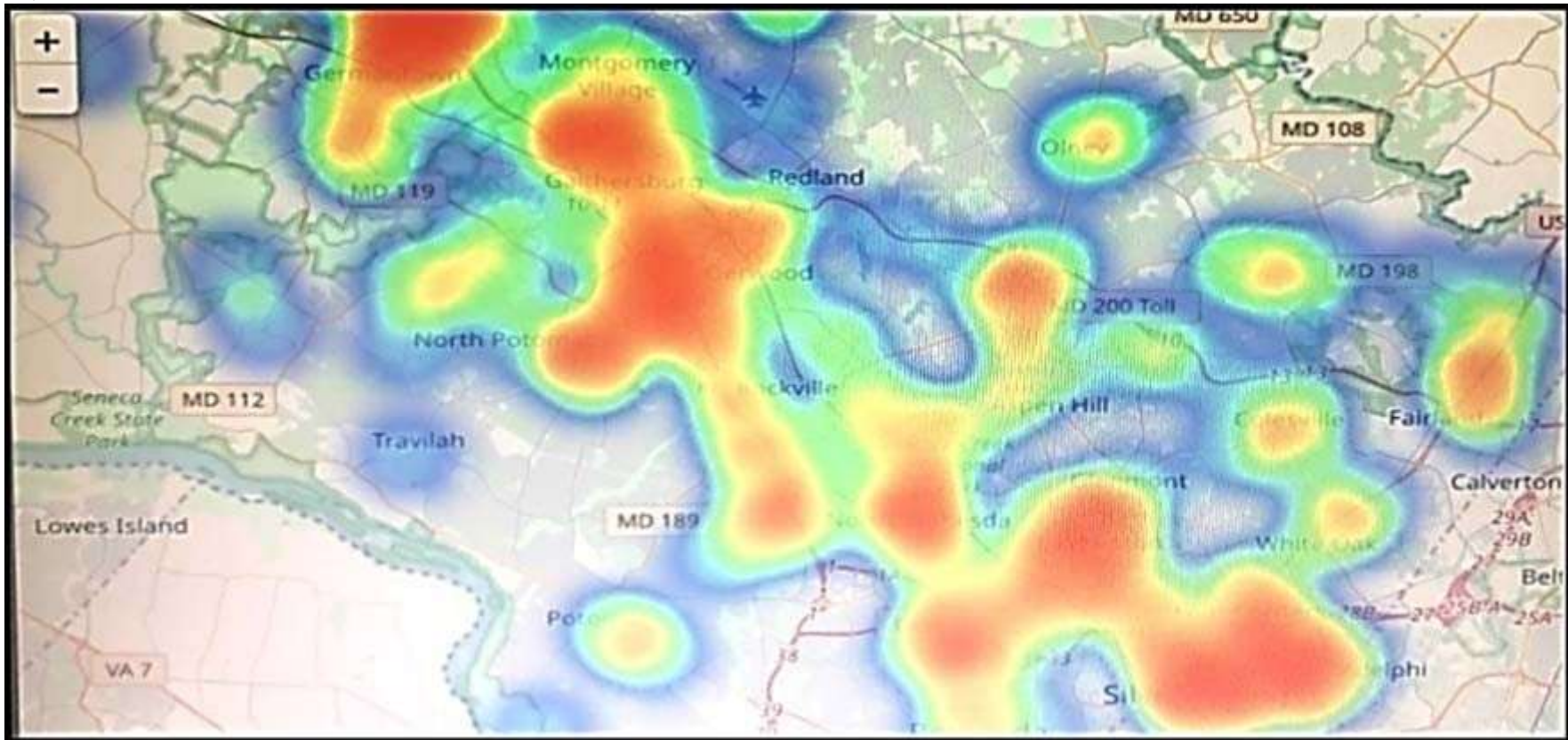
QUESTION 44

Which method defines the integration of Cisco Industrial Network Director with the Cisco identity Service Engine?

- A. Cisco IND integrates with ISE via Cisco Stealthwatch services.
- B. Cisco IND integrates with ISE using RADIUS services.
- C. Cisco IND is registered with pxGrid on ISE as a publisher.
- D. Cisco IND pulls the profiling information from ISE.

Correct Answer: C

QUESTION 45



Refer to the exhibit. Which two statements are true? (Choose two.)

- A. That is a heatmap projected on top of a geographic map.
- B. That is a treemap projected on top of a geographic map.
- C. The color red usually stands for lower values and the color blue usually stands for higher values.
- D. Another suitable visualization technique for this image would be line graphs.
- E. The color blue usually stands for lower values and the color red usually stands for higher values.

Correct Answer: AE

QUESTION 46

```
{
  "set1": {
    "Source.IP": "192.168.0.52",
    "Source.Port": 443,
    "Destination.IP": "192.168.0.55",
    "Destination.Port": 44447,
    "Protocol": 6,
    "Timestamp": "07/10/201911:12:20",
    "Flow.Duration": "131",
    "Total.Fwd.Packets": "8"
  },
  "set2": {
    "Source.IP": "192.168.0.48",
    "Source.Port": 80,
    "Destination.IP": "192.168.0.49",
    "Destination.Port": 5000,
    "Protocol": 6,
    "Timestamp": "07/10/201911:12:20",
    "Flow.Duration": "246",
    "Total.Fwd.Packets": "21"
  },
  "set3": {
    "Source.IP": "192.168.5.50",
    "Source.Port": 8000,
    "Destination.IP": "10.0.0.91",
    "Destination.Port": 8000,
    "Protocol": 6,
    "Timestamp": "07/10/201911:12:20",
    "Flow.Duration": "567",
    "Total.Fwd.Packets": "321"
  },
  "set4": "Output shorted..."
}
```

Refer to the exhibit. The code snippet provides information about the packet captures within a network. How can the most used source IP addresses within a specific time be visualized?

- A. line graph
- B. bar histogram
- C. scatter plot
- D. heatmap

Correct Answer: B

QUESTION 47

Which two security approaches help build a strong authentication scheme? (Choose two.)

- A. connection based on location
- B. session IDs accepted only from cookies
- C. maximum allowed connections
- D. user logout
- E. session logout because of inactivity

Correct Answer: CE

QUESTION 48

An IOx application is installed via Local Manager. Every time the application is started, it instantly stops. Which troubleshooting steps should be taken?

- A. There is something wrong with the application code itself.
- B. Check the startup and entrypoint parameters.
- C. Give the IOx application more CPU units.
- D. Check local IOx settings, especially the network settings.

Correct Answer: C