

➤ **Vendor: Cisco**

➤ **Exam Code: 350-401**

➤ **Exam Name: Implementing and Operating Cisco Enterprise Network Core Technologies (ENCOR)**

➤ **New Updated Questions from [Braindump2go](#) (Updated in [Jan./2021](#))**

[Visit Braindump2go and Download Full Version 350-401 Exam Dumps](#)

QUESTION 367

Which two actions, when applied in the LAN network segment, will facilitate Layer 3 CAPWAP discovery for lightweight AP? (Choose two.)

- A. Utilize DHCP option 17.
- B. Configure WLC IP address on LAN switch.
- C. Utilize DHCP option 43.
- D. Configure an ip helper-address on the router interface
- E. Enable port security on the switch port

Answer: CD

QUESTION 368

Refer to the exhibit. Which JSON syntax is derived from this data?

```
Person#1:
First Name is Johnny
Last Name is Table
Hobbies are:
• Running
• Video games

Person#2:
First Name is Billy
Last Name is Smith
Hobbies are:
• Napping
• Reading
```

- A. `{('First Name': 'Johnny', 'Last Name': 'Table', 'Hobbies': ['Running', 'Video games']), ('First Name': 'Billy', 'Last Name': 'Smith', 'Hobbies': ['Napping', 'Reading'])}`
- B. `{'Person': [{'First Name': 'Johnny', 'Last Name': 'Table', 'Hobbies': 'Running', 'Video games'}, {'First Name': 'Billy', 'Last Name': 'Smith', 'Hobbies': 'Napping', 'Reading'}]}`
- C. `{(['First Name': 'Johnny', 'Last Name': 'Table', 'Hobbies': 'Running', 'Hobbies': 'Video games'], ('First Name': 'Billy', 'Last Name': 'Smith', 'Hobbies': 'Napping', 'Hobbies': 'Reading'))}`
- D. `{'Person': [{'First Name': 'Johnny', 'Last Name': 'Table', 'Hobbies': ['Running', 'Video games']}, {'First Name': 'Billy', 'Last Name': 'Smith', 'Hobbies': ['Napping', 'Reading']}]}`

Answer: C

[350-401 Exam Dumps](#) [350-401 Exam Questions](#) [350-401 PDF Dumps](#) [350-401 VCE Dumps](#)

<https://www.braindump2go.com/350-401.html>

QUESTION 369

Which two network problems indicate a need to implement QoS in a campus network? (Choose two)

- A. port flapping
- B. excess jitter
- C. misrouted network packets
- D. duplicate IP addresses
- E. bandwidth-related packet loss

Answer: BD

QUESTION 370

Which outcome is achieved with this Python code?

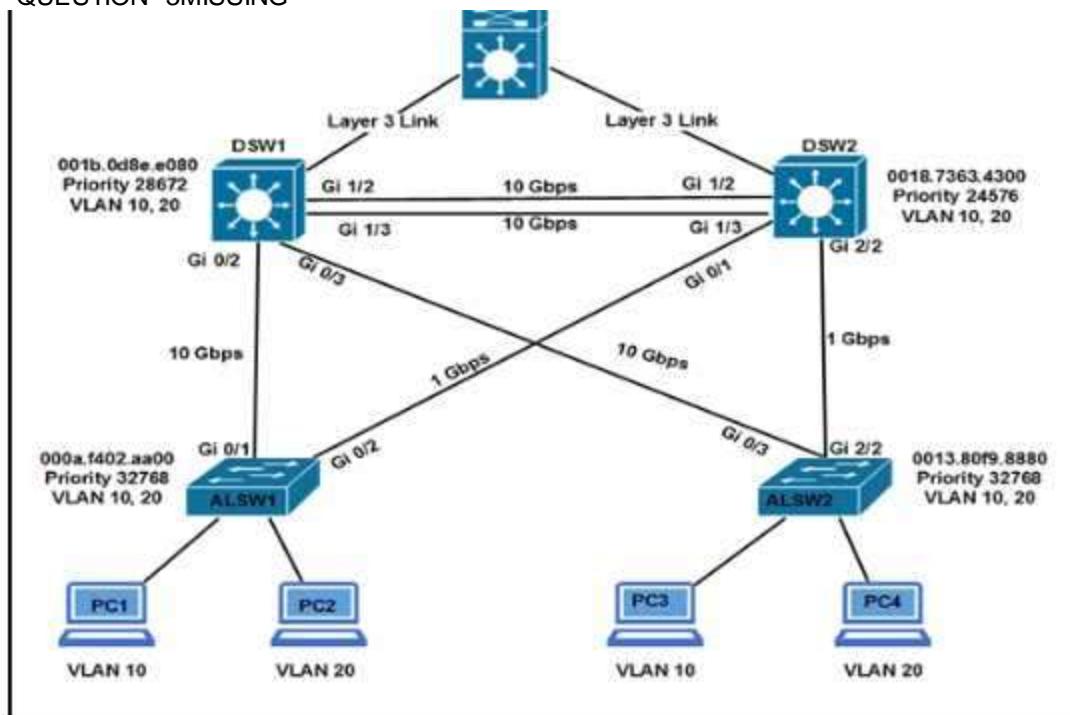
```
client.connect ( ip, port= 22, username= usr, password= pswd )
stdin, stdout, stderr = client.exec_command ( 'show ip bgp 192.168.101.0 bestpath\n ' )
print (stdout)
```

- A. connects to a Cisco device using SSH and exports the routing table information
- B. displays the output of the show command in a formatted way
- C. connects to a Cisco device using SSH and exports the BGP table for the prefix
- D. connects to a Cisco device using Telnet and exports the routing table information

Answer: C

QUESTION 371

---QUESTION 3 MISSING----



- A. DSW2(config-if)#spanning-tree port-priority 128
- B. DSW2(config-if)#spanning-tree port-priority 16
- C. DSW2(onfig-if)#interface gi1/3
- D. DSW1(config-if)#interface gi1/3
- E. DWS1(config-if)#spanning-tree port-priority 0

[350-401 Exam Dumps](#) [350-401 Exam Questions](#) [350-401 PDF Dumps](#) [350-401 VCE Dumps](#)

<https://www.braindump2go.com/350-401.html>

Answer: DE

QUESTION 372

In a Cisco SD-Access solution, what is the role of the Identity Services Engine?

- A. It is leveraged for dynamic endpoint to group mapping and policy definition.
- B. It provides GUI management and abstraction via apps that share context.
- C. it is used to analyze endpoint to app flows and monitor fabric status.
- D. It manages the LISP EID database.

Answer: C

QUESTION 373

What is the data policy in a Cisco SD-WAN deployment?

- A. list of ordered statements that define node configurations and authentication used within the SD-WAN overlay
- B. Set of statements that defines how data is forwarded based on IP packet information and specific VPNs
- C. detailed database mapping several kinds of addresses with their corresponding location
- D. group of services tested to guarantee devices and links liveliness within the SD-WAN overlay

Answer: B

QUESTION 374

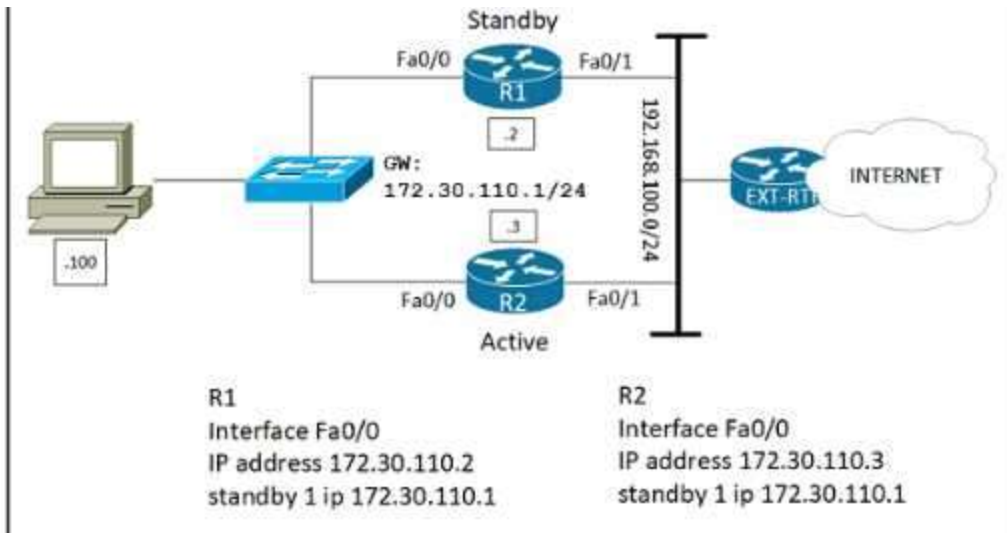
In a three-tier hierarchical campus network design, which action is a design best-practice for the core layer?

- A. provide QoS prioritization services such as marking, queueing, and classification for critical network traffic
- B. provide redundant Layer 3 point-to-point links between the core devices for more predictable and faster convergence
- C. provide advanced network security features such as 802.1X, DHCP snooping, VACLs, and port security
- D. provide redundant aggregation for access layer devices and first-hop redundancy protocols such as VRRP

Answer: A

QUESTION 375

Refer to the exhibit. Which configuration change ensures that R1 is the active gateway whenever it is in a functional state for the 172.30.110.0/24 network?



- A. R1
standby 1 preempt
R2
standby 1 priority 90
- B. R1
standby 1 preempt
R2
standby 1 priority 100
- C. R2
standby 1 priority 100
standby 1 preempt
- D. R2
standby 1 priority 90
standby 1 preempt

Answer: D

QUESTION 376

What are two characteristics of Cisco SD-Access elements? (Choose two)

- A. The border node is required for communication between fabric and nonfabric devices.
- B. Fabric endpoints are connected directly to the border node
- C. Traffic within the fabric always goes through the control plane node
- D. The control plane node has the full RLOC-to-EID mapping database
- E. The border node has the full RLOC-to-EID mapping database

Answer: AD

QUESTION 377

What is YANG used for?

- A. scraping data via CLI
- B. processing SNMP read-only polls
- C. describing data models
- D. providing a transport for network configuration data between client and server

[350-401 Exam Dumps](#) [350-401 Exam Questions](#) [350-401 PDF Dumps](#) [350-401 VCE Dumps](#)

<https://www.braindump2go.com/350-401.html>

Answer: C

QUESTION 378

Refer to the exhibit. Which action resolves the EtherChannel issue between SW2 and SW3?

```

Flags: D - down P - bundled in port-channel
I - stand-alone s - suspended
H - Hot-standby (LACP only)
R - Layer3 S - Layer2
U - in use f - failed to allocate aggregator
M - not in use, minimum links not met
u - unsuitable for bundling
w - waiting to be aggregated
d - default port
Number of channel-groups in use: 1
Number of aggregators: 1
Group Port-channel Protocol Ports
-----
1 Po1(S D) PAgP Gi0/0(I) Gi0/1(I)

SW3# show etherchannel summary
Flags: D - down P - bundled in port-channel
I - stand-alone s - suspended
H - Hot-standby (LACP only)
R - Layer3 S - Layer2
U - in use f - failed to allocate aggregator
M - not in use, minimum links not met
u - unsuitable for bundling
w - waiting to be aggregated
d - default port
Number of channel-groups in use: 1
Number of aggregators: 1
Group Port-channel Protocol Ports
-----
1 Po1(S D) LACP Gi0/0(I) Gi0/1(I)

```

- A. Configure switchport mode trunk on SW2.
- B. Configure switchport nonegotiate on SW3
- C. Configure channel-group 1 mode desirable on both interfaces.
- D. Configure channel-group 1 mode active on both interfaces.

Answer: D

QUESTION 379

A customer has completed the installation of a Wi-Fi 6 greenfield deployment at their new campus. They want to leverage Wi-Fi 6 enhanced speeds on the trusted employee WLAN. To configure the employee WLAN, which two Layer 2 security policies should be used? (Choose two.)

- A. 802.1X
- B. WPA (AES)
- C. WPA2 (AES) jWEK
- D. OPEN

Answer: AC

QUESTION 380

The following system log message is presented after a network administrator configures a GRE tunnel %TUN-RECURDOWN Interface Tunnel 0 temporarily disabled due to recursive routing. Why is Tunnel 0 disabled?

- A. Because dynamic routing is not enabled

- B. Because the tunnel cannot reach its tunnel destination
- C. Because the best path to the tunnel destination is through the tunnel itself
- D. Because the router cannot recursively identify its egress forwarding interface.

Answer: C

QUESTION 381

Which encryption hashing algorithm does NTP use for authentication?

- A. SSL
- B. MD5
- C. AES128
- D. AES256

Answer: B

QUESTION 382

Which data is properly formatted with JSON?

- A.

```
{
  "name": "Peter"
  "age": "25"
  "likesJson": true
  "characteristics": ["small", "strong", 18]
}
```
- B.

```
{
  "name": Peter,
  "age": 25,
  "likesJson": true,
  "characteristics": ["small", "strong", "18"],
}
```
- C.

```
{
  "name": "Peter",
  "age": "25",
  "likesJson": true,
  "characteristics": ["small", "strong", 18]
}
```
- D.

```
{
  "name": "Peter",
  "age": "25",
  "likesJson": true,
  "characteristics": ["small", "strong", "18"],
}
```

Answer: C

QUESTION 383

Refer to the exhibit. An engineer must assign an IP address of 192.168.1.1/24 to the GigabitEthernet1 interface. Which two commands must be added to the existing configuration to accomplish this task (Choose two)


```
Current configuration : 142 bytes
vrf definition STAFF
!
!
interface GigabitEthernet1
 vrf forwarding STAFF
 no ip address
 negotiation auto
 no mop enabled
 no mop sysid
end
```

- A. Router(config-vrf)# address-family ipv6
- B. Router(config-if)# ip address 192.168.1.1 255.255.255.0
- C. Router(config-vrf)# ip address 192.168.1.1 255.255.255.0
- D. Router(config-if)# address-family ipv4
- E. Router(config-vrf)# address-family ipv4

Answer: BE

QUESTION 384

How does Protocol Independent Multicast function?

- A. In sparse mode it establishes neighbor adjacencies and sends hello messages at 5-second intervals.
- B. It uses the multicast routing table to perform the multicast forwarding function.
- C. It uses unicast routing information to perform the multicast forwarding function.
- D. It uses broadcast routing information to perform the multicast forwarding function.

Answer: C

QUESTION 385

Which technology does VXLAN use to provide segmentation for Layer 2 and Layer 3 traffic?

- A. bridge domain
- B. VLAN
- C. VRF
- D. VNI

Answer: D

QUESTION 386

What are two methods of ensuring that the multicast RPF check passes without changing the unicast routing table? (Choose two.)

- A. implementing static mroutes
- B. disabling BGP routing protocol
- C. implementing MBGP
- D. disabling the interface of the router back to the multicast source
- E. implementing OSPF routing protocol

Answer: AC

Explanation:

<https://www.cisco.com/c/en/us/support/docs/ip/ip-multicast/16450-mcastguide0.html>

QUESTION 387

Under which network conditions is an outbound QoS policy that is applied on a router WAN interface most beneficial?

- A. under all network conditions
- B. under network convergence conditions
- C. under traffic classification and marking conditions
- D. under interface saturation conditions

Answer: C

QUESTION 388

What is provided by the Stealthwatch component of the Cisco Cyber Threat Defense solution?

- A. real-time threat management to stop DDoS attacks to the core and access networks
- B. real-time awareness of users, devices and traffic on the network
- C. malware control
- D. dynamic threat control for web traffic

Answer: A

QUESTION 389

A company has an existing Cisco 5520 HA cluster using SSO. An engineer deploys a new single Cisco Catalyst 9800 WLC to test new features. The engineer successfully configures a mobility tunnel between the 5520 cluster and 9800 WLC. Clients connected to the corporate WLAN roam seamlessly between access points on the 5520 and 9800 WLC. After a failure on the primary 5520 WLC, all WLAN services remain functional; however clients cannot roam between the 5520 and 9800 controllers without dropping their connection.

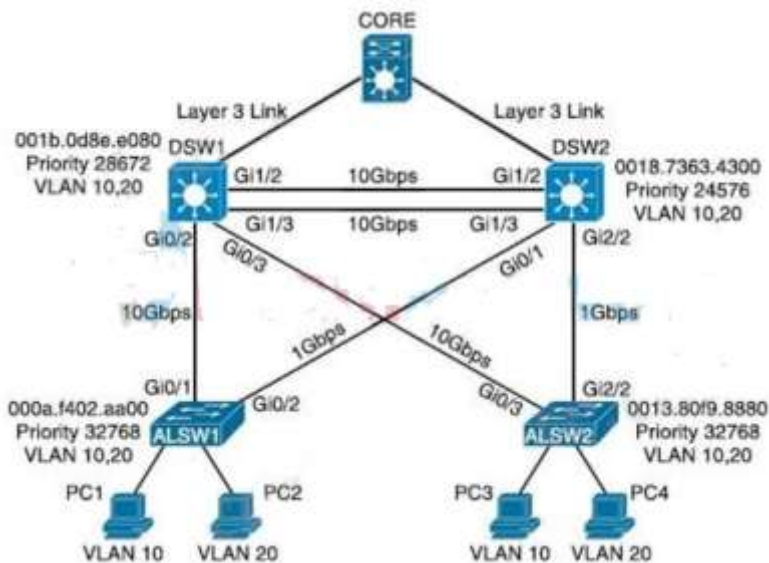
Which feature must be configured to remedy the issue?

- A. mobility MAC on the 5520 cluster
- B. mobility MAC on the 9800 WLC
- C. new mobility on the 5520 cluster
- D. new mobility on the 9800 WLC

Answer: B

QUESTION 390

Refer to the exhibit. Assuming all links are functional, which path does PC1 take to reach DSW1?



- A. PC1 goes from ALSW1 to DSW1
- B. PC1 goes from ALSW1 to DSW2 to ALSW2 to DSW1
- C. PC1 goes from ALSW1 to DSW2 to Core to DSW1
- D. PC1 goes from ALSW1 to DSW2 to DSW1

Answer: D

Explanation:

In the topology above, we see DSW2 has lowest priority 24576 so it is the root bridge for VLAN 10 so surely all traffic for this VLAN must go through it. All of DSW2 ports must be in forwarding state. And:

+ The direct link between DSW1 and ALSW1 is blocked by STP.

+ The direct link between DSW1 and ALSW2 is also blocked by STP.

Therefore PC1 must go via this path: PC1 -> ALSW1 -> DSW2 -> DSW1.

QUESTION 391

Drag and Drop Question

An engineer creates the configuration below. Drag and drop the authentication methods from the left into the order of priority on the right. Not all options are used.

```
R1#sh run | i aaa
aaa new-model
aaa authentication login default group ACE group AAA_RADIUS local-case
aaa session-id common
R1#
```

- AAA servers of AAA_RADIUS group
- local configured username in non-case-sensitive format
- local configured username in case-sensitive format
- AAA servers of ACE group
- tacacs servers of group ACE
- If no method works, then deny login.

Answer:

- local configured username in case-sensitive format
- local configured username in non-case-sensitive format
- AAA servers of ACE group
- AAA servers of AAA_RADIUS group
- tacacs servers of group ACE
- If no method works, then deny login.