

➤ **Vendor: Cisco**

➤ **Exam Code: 350-401**

➤ **Exam Name: Implementing and Operating Cisco Enterprise Network Core Technologies (ENCOR)**

➤ **New Updated Questions from [Braindump2go](#) (Updated in [March/2021](#))**

**[Visit Braindump2go and Download Full Version 350-401 Exam Dumps](#)**

**QUESTION 392**

What does the number in an NTP stratum level represent?

- A. The number of hops it takes to reach the master time server.
- B. The number of hops it takes to reach the authoritative time source.
- C. The amount of offset between the device clock and true time.
- D. The amount of drift between the device clock and true time.

**Answer: B**

**QUESTION 393**

Which method should an engineer use to deal with a long-standing contention issue between any two VMs on the same host?

- A. Adjust the resource reservation limits
- B. Live migrate the VM to another host
- C. Reset the VM
- D. Reset the host

**Answer: A**

**QUESTION 394**

Refer to the exhibit. What is the effect of introducing the sampler feature into the Flexible NetFlow configuration on the router?

```

flow monitor FLOW-MONITOR-1
 record netflow ipv6 original-input
 exit
!
sampler SAMPLER-1
 mode deterministic 1 out-of 2
 exit
!
ip cef
ipv6 cef
!
interface GigabitEthernet 0/0/0
 ipv6 address 2001:DB8:2:ABCD::2/48
 ipv6 flow monitor FLOW-MONITOR-1 sampler SAMPLER-1 input
!

```

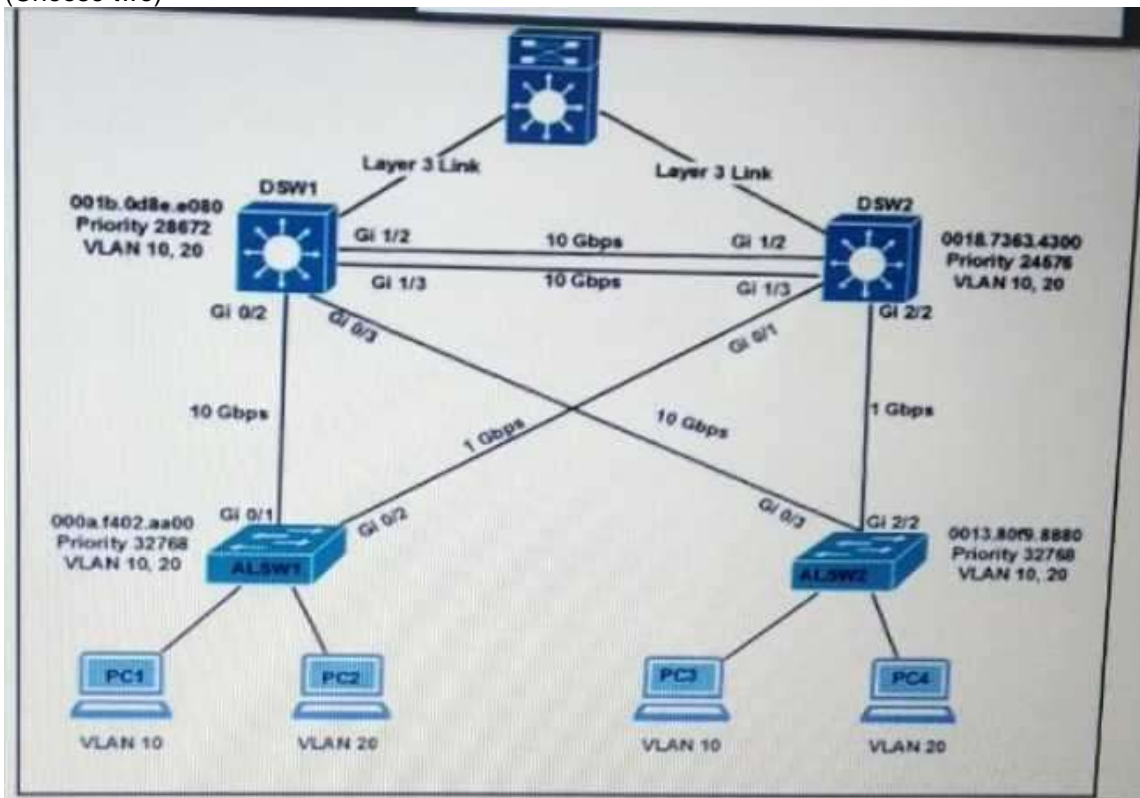
- A. NetFlow updates to the collector are sent 50% less frequently.
- B. Every second IPv4 packet is forwarded to the collector for inspection.
- C. CPU and memory utilization are reduced when compared with what is required for full NetFlow.
- D. The resolution of sampling data increases, but it requires more performance from the router.

Answer: C

**QUESTION 395**

Refer to the exhibit. All switches are configured with the default port priority value.

Which two commands ensure that traffic from PC1 is forwarded over Gi1/3 trunk port between DWS1 and DSW2? (Choose two)

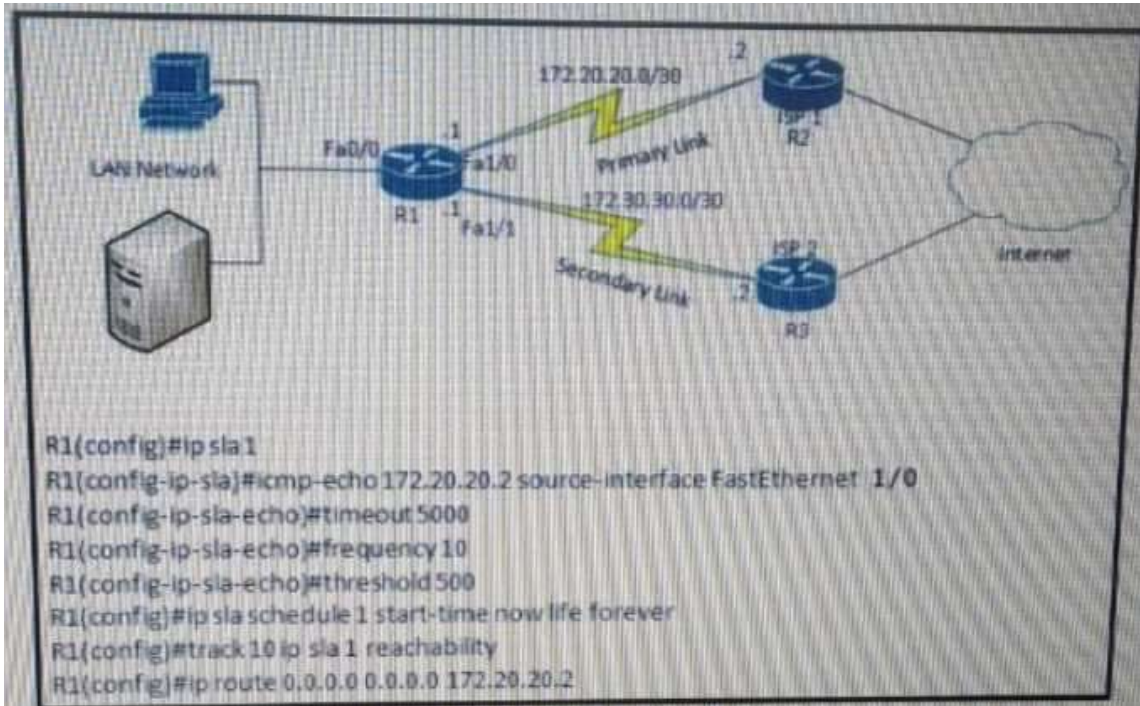


- A. DSW2(config-if)#spanning-tree port-priority 16
- B. DSW2(config)#interface gi1/3
- C. DSW1(config-if)#spanning-tree port-priority 0
- D. DSW1(config)#interface gi1/3
- E. DSW2(config-if)#spanning-tree port-priority 128

**Answer: AB**

**QUESTION 396**

Refer to the exhibit. After implementing the configuration 172.20.20.2 stops replaying to ICMP echoes, but the default route fails to be removed. What is the reason for this behavior?



- A. The source-interface is configured incorrectly.
- B. The destination must be 172.30.30.2 for icmp-echo
- C. The default route is missing the track feature
- D. The threshold value is wrong.

**Answer: C**

**QUESTION 397**

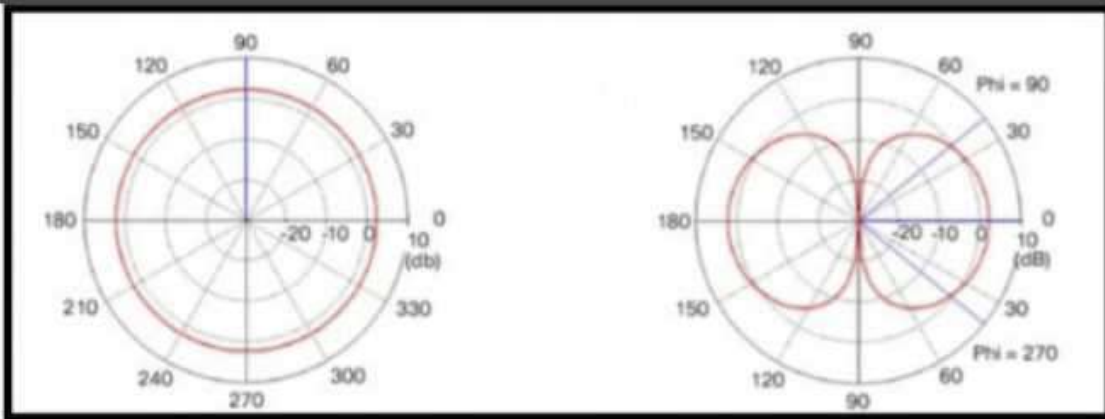
What are two features of NetFlow flow monitoring? (Choose two.)

- A. Copies all ingress flow information to an interface
- B. Include the flow record and the flow importer
- C. Can track ingress and egress information
- D. Can be used to track multicast, MPLS, or bridged traffic.
- E. Does not required packet sampling on interfaces

**Answer: CD**

**QUESTION 398**

Refer to the exhibit. Which type of antenna is show on the radiation patterns?



- A. Dipole
- B. Yagi
- C. Patch
- D. Omnidirectional

**Answer: A**

**QUESTION 399**

Which protocol is implemented to establish secure control plane adjacencies between Cisco SD-WAN nodes?

- A. IKE
- B. DTIS
- C. IPsec
- D. ESP

**Answer: C**

**QUESTION 400**

What is the recommended MTU size for a Cisco SD-Access Fabric?

- A. 1500
- B. 9100
- C. 4464
- D. 17914

**Answer: A**

**QUESTION 401**

What is the process for moving a virtual machine from one host machine to another with no downtime?

- A. high availability
- B. disaster recovery
- C. live migration
- D. multisite replication

**Answer: C**

**QUESTION 402**

What is the wireless received signal strength indicator?

- A. The value given to the strength of the wireless signal received compared to the noise level

[350-401 Exam Dumps](#) [350-401 Exam Questions](#) [350-401 PDF Dumps](#) [350-401 VCE Dumps](#)

<https://www.braindump2go.com/350-401.html>

- B. The value of how strong the wireless signal is leaving the antenna using transmit power, cable loss, and antenna gain
- C. The value of how much wireless signal is lost over a defined amount of distance
- D. The value of how strong a wireless signal is received, measured in dBm

**Answer: D**

**QUESTION 403**

What is the calculation that is used to measure the radiated power of a signal after it has gone through the radio, antenna cable, and antenna?

- A. EIRP
- B. mW
- C. dBm
- D. dBi

**Answer: A**

**QUESTION 404**

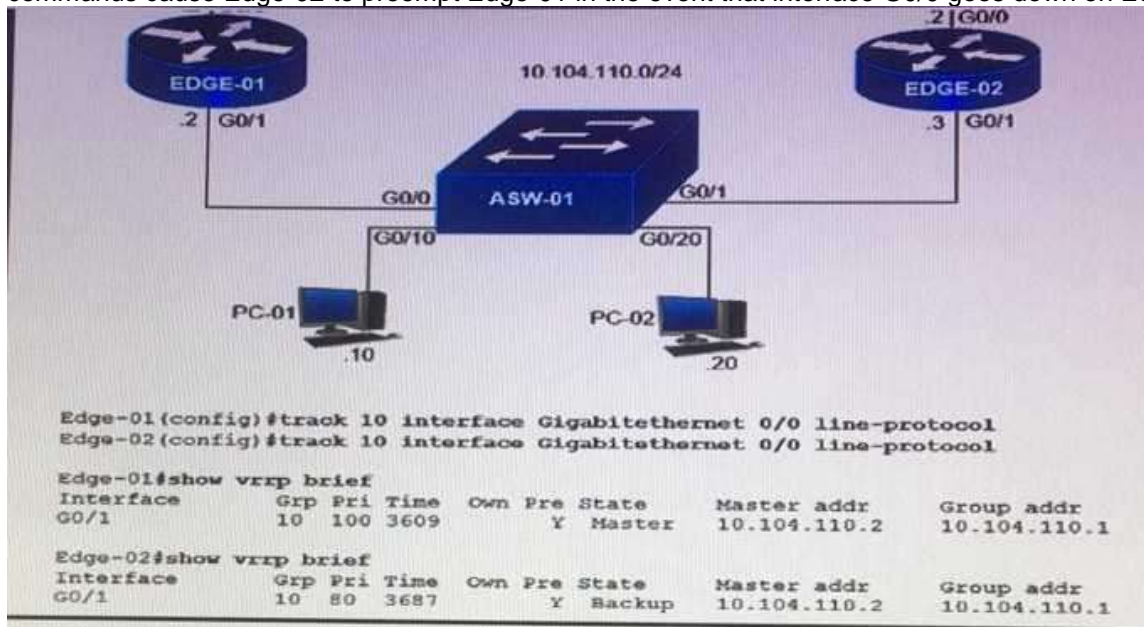
When does a stack master lose its role?

- A. When the priority value of a stack member is changed to a higher value
- B. when a switch with a higher priority is added to the stack
- C. when the stack master is reset
- D. when a stack member fails

**Answer: A**

**QUESTION 405**

Refer to the exhibit. Object tracking has been configured for VRRP. Enabled routers Edge-01 and Edge-02. Which commands cause Edge-02 to preempt Edge-01 in the event that interface G0/0 goes down on Edge-01?



```
Edge-01(config)#interface G0/1
Edge-01(config-if)#vrrp 10 track 10 decrement 30

Edge-02(config)#interface G0/1
Edge-02(config-if)#vrrp 10 track 10 decrement 30

Edge-02(config)#interface G0/1
Edge-02(config-if)#vrrp 10 track 10 decrement 10

Edge-01(config)#interface G0/1
Edge-01(config-if)#vrrp 10 track 10 decrement 10
```

- A. Option A
- B. Option B
- C. Option C
- D. Option D

**Answer:** A

**QUESTION 406**

Which controller is capable of acting as a STUN server during the onboarding process of Edge devices?

- A. vBond
- B. vSmart
- C. vManage
- D. PNP server

**Answer:** A

**QUESTION 407**

What is a benefit of a virtual machine when compared with a physical server?

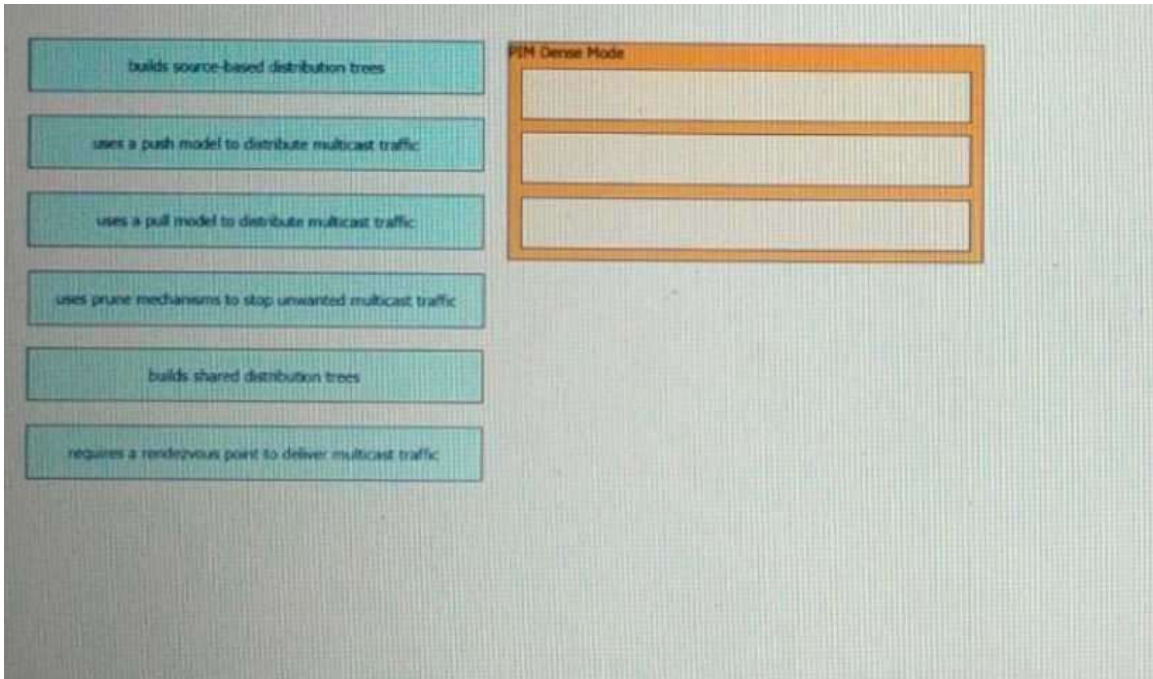
- A. Multiple virtual servers can be deployed on the same physical server without having to buy additional hardware.
- B. Virtual machines increase server processing performance.
- C. The CPU and RAM resources on a virtual machine cannot be affected by other virtual machines.
- D. Deploying a virtual machine is technically less complex than deploying a physical server.

**Answer:** A

**QUESTION 408**

Drag and Drop Question

Drag and drop characteristics of PIM dense mode from the left to the right.



Answer:

