

➤ **Vendor: Cisco**

➤ **Exam Code: 350-401**

➤ **Exam Name: Implementing and Operating Cisco Enterprise Network Core Technologies (ENCOR)**

➤ **New Updated Questions from [Braindump2go](#) (Updated in [May/2022](#))**

[Visit Braindump2go and Download Full Version 350-401 Exam Dumps](#)

QUESTION 771

A customer deploys a new wireless network to perform location-based services using Cisco DNA Spaces. The customer has a single WLC located on-premises in a secure data center. The security team does not want to expose the WLC to the public Internet. Which solution allows the customer to securely send RSSI updates to Cisco DNA Spaces?

- A. Implement Cisco Mobility Services Engine
- B. Replace the WLC with a cloud-based controller.
- C. Perform tethering with Cisco DNA Center.
- D. Deploy a Cisco DNA Spaces connector as a VM.

Answer: D

QUESTION 772

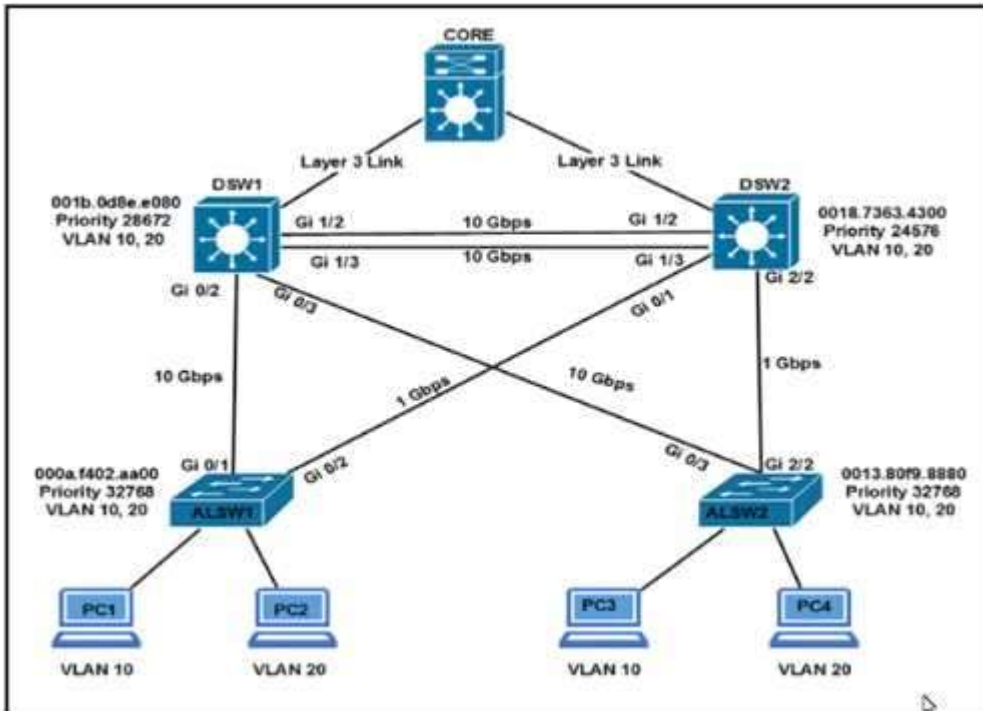
What does a YANG model provide?

- A. standardized data structure independent of the transport protocols
- B. creation of transport protocols and their interaction with the OS
- C. user access to interact directly with the CLI of the device to receive or modify network configurations
- D. standardized data structure that can be used only with NETCONF or RESTCONF transport protocols

Answer: D

QUESTION 773

Refer to the exhibit. Assuming all links are functional, which path does PC1 take to reach DSW1?

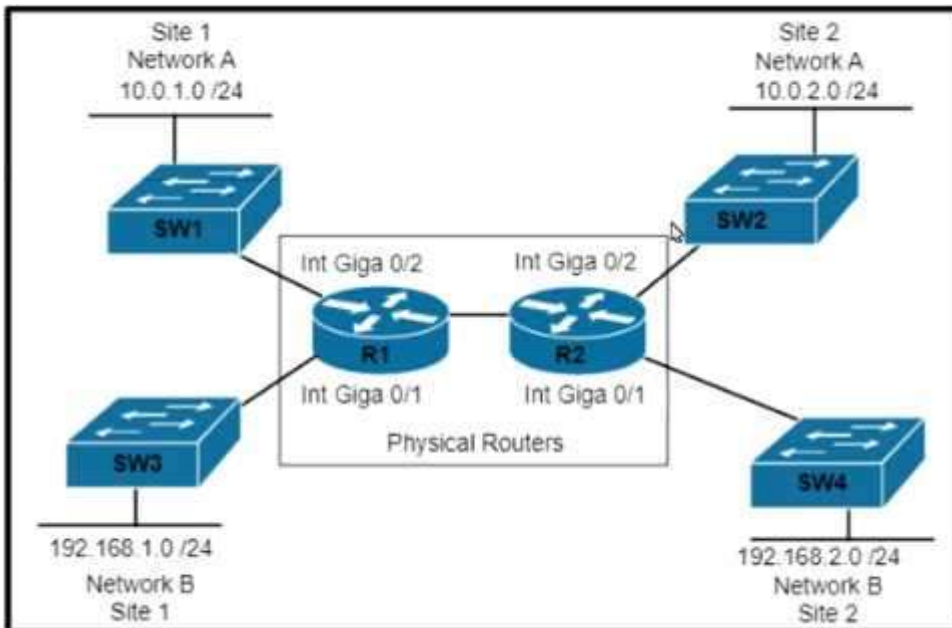


- A. PC1 goes from ALSW1 to DSW2 to CORE to DSW1.
- B. PC1 goes from ALSW1 to DSW2 to DSW1.
- C. PC1 goes from ALSW1 to DSW1.
- D. PC1 goes from ALSW1 to DSW2 to ALSW2 to DSW1.

Answer: B

QUESTION 774

Refer to the exhibit. Which set of commands is required to configure and verify the VRF for Site 1 Network A on router R1?



- ☐ R1#ip routing
R1(config)#ip vrf 100
!
R1(config)#interface Gi0/2
R1(config-if)#ip address 10.0.1.1 255.255.255.0

R1#show ip route
- ☐ R1#ip routing
R1(config)#ip vrf 100
R1(config-vrf)#rd 100:1
R1(config-vrf)# address family ipv4
!
R1(config)#interface Gi0/2
R1(config-if)#ip address 10.0.1.1 255.255.255.0

R1#show ip route
- ☐ R1#ip routing
R1(config)#ip vrf 100
!
R1(config)#interface Gi0/2
R1(config-if)#ip address 10.0.1.1 255.255.255.0

R1#show ip vrf
- ☐ R1#ip routing
R1(config)#ip vrf 100
!
R1(config)#interface Gi0/2
R1(config-if)#ip vrf forwarding 100
R1(config-if)#ip address 10.0.1.1 255.255.255.0

R1#show ip vrf

- A. Option A
B. Option B
C. Option C
D. Option D

Answer: D

QUESTION 775

By default, which virtual MAC address does HSRP group 22 use?

- A. c0:42:01:67:05:16
B. c0:07:0c:ac:00:22
C. 00:00:0c:07:ac:16
D. 00:00:0c:07:ac:22

Answer: D

QUESTION 776

Refer to the exhibit. An engineer must protect the CPU of the router from high rates of NTP, SNMP, and SSH traffic. Which two configurations must be applied to drop these types of traffic when it continuously exceeds 320 kbps? (Choose two)

```
ip access-list extended ACL-CoPP-Management
permit udp any eq ntp any
permit udp any any eq snmp
permit tcp any any eq 22
permit tcp any eq 22 any established
```

```
class-map match-all CLASS-CoPP-Management
match access-group name ACL-CoPP-Management
```

- ☐ R1(config)#policy-map POLICY-CoPP
R1(config-pmap)#class CLASS-CoPP-Management
R1(config-pmap-c)#police 320000 conform-action transmit exceed-action transmit violate-action drop
- ☐ R1(config)#control-plane
R1(config-cp)#service-policy input POLICY-CoPP
- ☐ R1(config-pmap)#class CLASS-CoPP-Management
R1(config-pmap-c)#police 32 conform-action transmit exceed-action drop violate-action transmit
- ☐ R1(config)#control-plane
R1(config-cp)#service-policy output POLICY-CoPP
- ☐ R1(config)#policy-map POLICY-CoPP
R1(config-pmap)#class CLASS-CoPP-Management
R1(config-pmap-c)#police 320000 conform-action transmit exceed-action drop violate-action drop

- A. Option A
- B. Option B
- C. Option C
- D. Option D
- E. Option E

Answer: BE

QUESTION 777

Based on the router's API output In JSON format below, which Python code will display the value of the 'role' key?

```
{
  "response": [{
    "family": "Routers",
    "macAddress": "00:c8:8b:80:bb:00",
    "hostname": "BorderA",
    "role": "BORDER ROUTER",
    "lastUpdateTime": 1577420167054,
    "serialNumber": "FXS8799Q1SE",
    "softwareVersion": "16.3.2",
    "upTime": "5 days, 9:22:32:17",
    "lastUpdated": "2021-03-05 23:30:37"
  }]
}
```

- ☐ json_data = json.loads(response.text)
print(json_data['response']['family']['role'])
- ☐ json_data = response.json()
print(json_data['response']['family']['role'])
- ☐ json_data = json.loads(response.text)
print(json_data['response'][0]['role'])
- ☐ json_data = response.json()
print(json_data['response'][0]['role'])

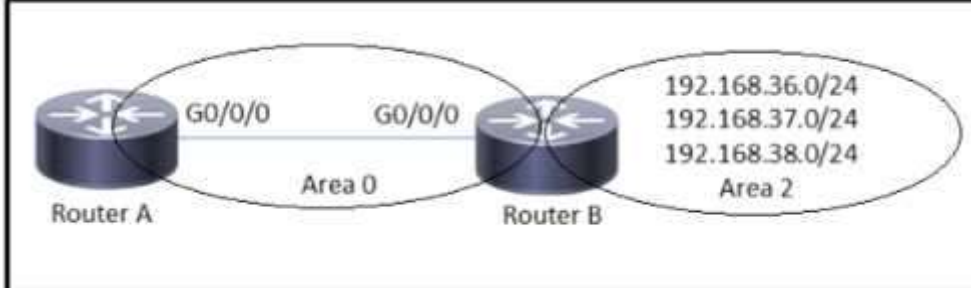
- A. Option A
- B. Option B

- C. Option C
- D. Option D

Answer: C

QUESTION 778

Refer to the exhibit. Which configuration is required to summarize the Area 2 networks that are advertised to Area 0?



- ☐ RouterB(config)# router ospf 1
RouterB(config-router)# network 192.168.38.0 255.255.252.0
- ☐ RouterB(config)# router ospf 1
RouterB(config-router)# network 192.168.38.0 255.255.255.0
- ☐ RouterB(config)# router ospf 1
RouterB(config-router)# area 2 range 192.168.36.0 255.255.252.0
- ☐ RouterB(config)# router ospf 1
RouterB(config-router)# area 2 range 192.168.36.0 255.255.255.0

- A. Option A
- B. Option B
- C. Option C
- D. Option D

Answer: C

QUESTION 779

A customer has a wireless network deployed within a multi-tenant building. The network provides client access, location-based services, and is monitored using Cisco DNA Center.

The security department wants to locate and track malicious devices based on threat signatures.

Which feature is required for this solution?

- A. Cisco aWIPS policies on the WLC
- B. Cisco aWIPS policies on Cisco DNA Center
- C. malicious rogue rules on the WLC
- D. malicious rogue rules on Cisco DNA Center

Answer: B

QUESTION 780

Refer to the exhibit. An engineer configures a trunk between SW1 and SW2 but tagged packets are not passing. Which action fixes the issue?

```

SW1#show cdp neighbors | include Local0/1
Device ID    Local Intf    Holdtime    Capability Platform Port ID
SW2          Fas 0/1       151         R/S WS-C3750- Fas 0/1

SW1#show interfaces FastEthernet0/1 switchport
Name: Fa0/1
Switchport: Enabled
Administrative Mode: dynamic desirable
Operational Mode: static access
Administrative Trunking Encapsulation: dot1q
Operational Trunking Encapsulation: native
Negotiation of Trunking: On

SW2#show cdp neighbors | include Local0/1
Device ID    Local Intf    Holdtime    Capability Platform Port ID
SW1          Fas 0/1       142         R/S WS-C3750- Fas 0/1

SW2#show interfaces FastEthernet0/1 switchport
Name: Fa0/1
Switchport: Enabled
Administrative Mode: dynamic desirable
Operational Mode: static access
Administrative Trunking Encapsulation: isl
Operational Trunking Encapsulation: native
Negotiation of Trunking: On

```

- A. Configure SW1 with dynamic auto mode on interface FastEthernet0/1.
- B. Configure the native VLAN to be the same VLAN on both switches on interface FastEthernet0/1.
- C. Configure SW2 with encapsulation dot1q on interface FastEthernet0/1.
- D. Configure FastEthernet0/1 on both switches for static trunking.

Answer: C

QUESTION 781

In a Cisco SD-Access wireless environment, which device is responsible for hosting the anycast gateway?

- A. fusion router
- B. control plane node
- C. fabric border node
- D. fabric edge node

Answer: D