

➤ **Vendor: Cisco**

➤ **Exam Code: 350-401**

➤ **Exam Name: Implementing and Operating Cisco Enterprise Network Core Technologies (ENCOR)**

➤ **New Updated Questions from [Braindump2go](#) (Updated in [Oct./2020](#))**

[Visit Braindump2go and Download Full Version 350-401 Exam Dumps](#)

QUESTION 217

Which three methods does Cisco DNA Centre use to discover devices? (Choose three)

- A. CDP
- B. SNMP
- C. LLDP
- D. ping
- E. NETCONF
- F. a specified range of IP addresses

Answer: ACF

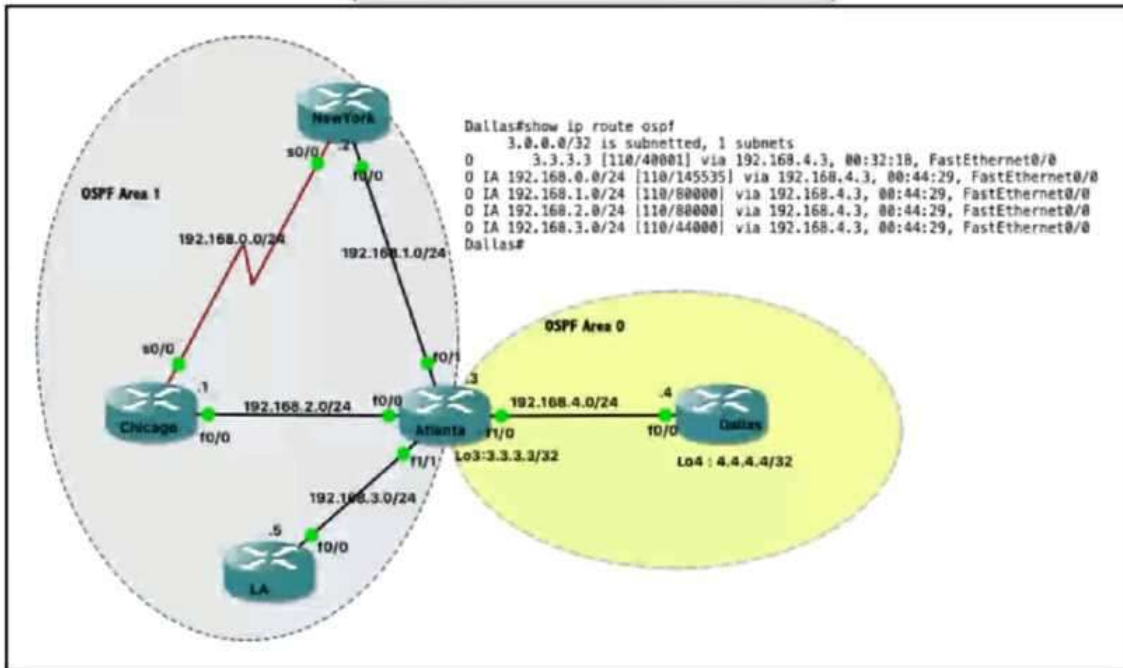
Explanation:

There are three ways for you to discover devices:

- Use Cisco Discovery Protocol (CDP) and provide a seed IP address.
- Specify a range of IP addresses. (A maximum range of 4096 devices is supported.)
- Use Link Layer Discovery Protocol (LLDP) and provide a seed IP address.

QUESTION 218

Refer to the exhibit. Which command when applied to the Atlanta router reduces type 3 LSA flooding into the backbone area and summarizes the inter-area routes on the Dallas router?



- A. Atlanta(config-route)#area 0 range 192.168.0.0 255.255.248.0
- B. Atlanta(config-route)#area 0 range 192.168.0.0 255.255.252.0
- C. Atlanta(config-route)#area 1 range 192.168.0.0 255.255.252.0
- D. Atlanta(config-route)#area 1 range 192.168.0.0 255.255.248.0

Answer: C

QUESTION 219

Refer to the exhibit. An engineer is installing a new pair of routers in a redundant configuration. Which protocol ensures that traffic is not disrupted in the event of a hardware failure?

<pre> R1 key chain cisco123 key 1 key-string cisco123! Ethernet0/0 - Group 10 State is Active 8 state changes, last state change 00:02:49 Virtual IP address is 192.168.0.1 Active virtual MAC address is 0000.0c07.ac0a </pre>	<pre> R2 key chain cisco123 key 1 key-string cisco123! Ethernet0/0 - Group 10 State is Active 17 state changes, last state change 00:02:17 Virtual IP address is 192.168.0.1 Active virtual MAC address is 0000.0c07.ac0a </pre>
---	--

- A. HSRPv1
- B. GLBP
- C. VRRP
- D. HSRPv2

Answer: B

QUESTION 220

An engineer must configure interface GigabitEthernet0/0 for VRRP group 10. When the router has the highest priority in the group, it must assume the master role. Which command set must be added to the initial configuration to accomplish this task?

```
Initial Configuration
Interface GigabitEthernet0/0
description To IDF A 38-18-216.62
ip address 172.16.13.2 255.255.255.0
```

- A. vrrp 10 ip 172.16.13.254
vrrp 10 preempt
- B. standby 10 ip 172.16.13.254
standby 10 priority 120
- C. vrrp group 10 ip 172.16.13 254.255.255.255.0
vrrp group 10 priority 120
- D. standby 10 ip 172.16.13.254 255.255.255.0
standby 10 preempt

Answer: C

Explanation:

By default, a preemptive scheme is enabled. A backup high-priority virtual router that becomes available takes over for the backup virtual router that was elected to become the virtual router master.

QUESTION 221

What are two reasons a company would choose a cloud deployment over an on-prem deployment? (Choose Two)

- A. In a cloud environment, the company controls technical issues. On-prem environments rely on the service provider to resolve technical issue.
- B. Cloud costs adjust up or down depending on the amount of resources consumed. On- Prem costs for hardware, power, and space are ongoing regardless of usage
- C. Cloud deployments require long implementation times due to capital expenditure processes. On- Prem deployments can be accomplished quickly using operational expenditure processes.
- D. Cloud resources scale automatically to an increase in demand. On-prem requires additional capital expenditure.
- E. In a cloud environment, the company is in full control of access to their data. On-prem risks access to data due to service provider outages

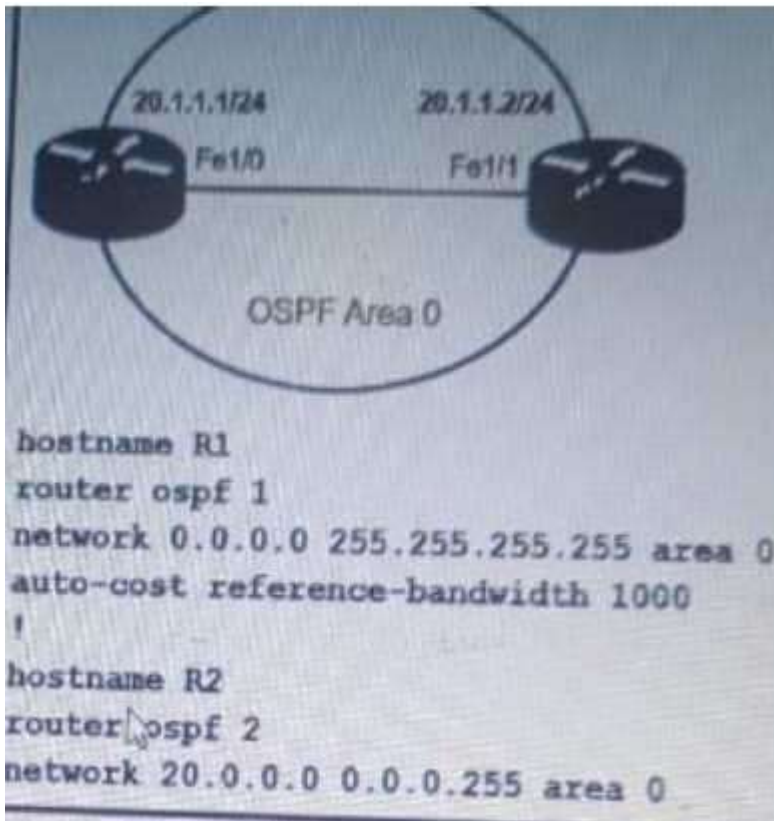
Answer: BD

Explanation:

AWS Auto Scaling monitors your applications and automatically adjusts capacity to maintain steady, predictable performance at the lowest possible cost. Using AWS Auto Scaling, it's easy to setup application scaling for

QUESTION 222

Refer to the exhibit. Which command must be applied to R2 for an OSPF neighborship to form?

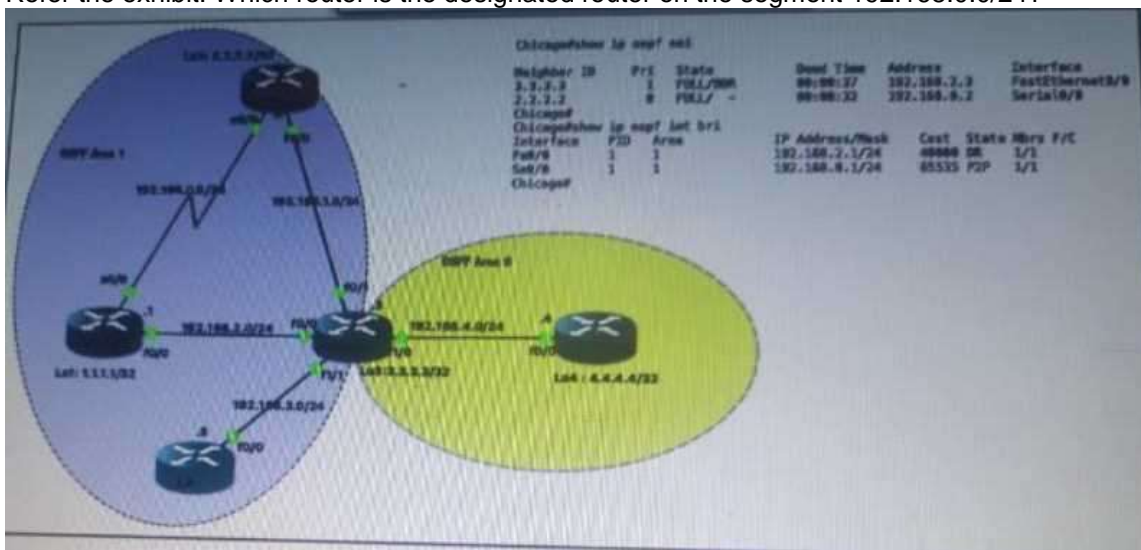


- A. network 20.1.1.2.0.0.0 area 0
- B. network 20.1.1.2 255.255.0.0. area 0
- C. network 20.1.1.2.0.0.255.255 area 0
- D. network 20.1.1.2 255.255.255 area 0

Answer: A

QUESTION 223

Refer the exhibit. Which router is the designated router on the segment 192.168.0.0/24?



- A. This segment has no designated router because it is a nonbroadcast network type.
- B. This segment has no designated router because it is a p2p network type.

- C. Router Chicago because it has a lower router ID
- D. Router NewYork because it has a higher router ID

Answer: A

QUESTION 224

Which antenna type should be used for a site-to-site wireless connection?

- A. Omnidirectional
- B. dipole
- C. patch
- D. Yagi

Answer: D

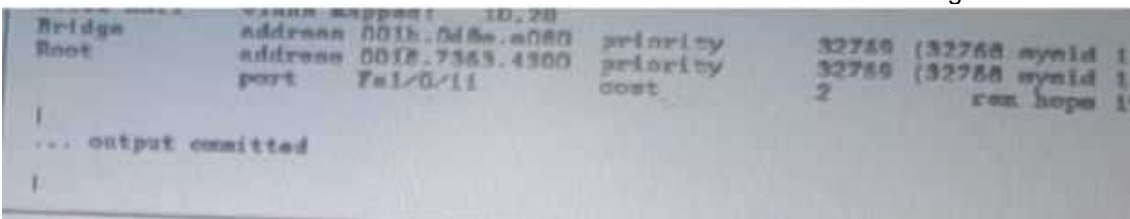
Explanation:

Yagi Antenna

- Used to communicate in one direction (unidirectional)
- They have a longer range in comparison to Omni Antennas
- Typically only communicate with one other radio, however can talk to multiple
- More common to see used in remote locations

QUESTION 225

Refer to the exhibit. Which two commands ensure that DSW1 becomes root bridge for VLAN 10 and 20?



```
Bridge          address 001b.0d5e.e080  priority 32768 (32768 sysid 1)
Root           address 0018.7363.4300  priority 32768 (32768 sysid 1)
                port Fa1/0/11             cost 2                res. hops 15
... output omitted
```

- A. spanning-tree mst 1 priority 1
- B. spanning-tree mst 1 root primary
- C. spanning-tree mstp vlan 10,20 root primary
- D. spanning-tree mst vlan 10,20 priority root
- E. spanning-tree mst 1 priority 4096

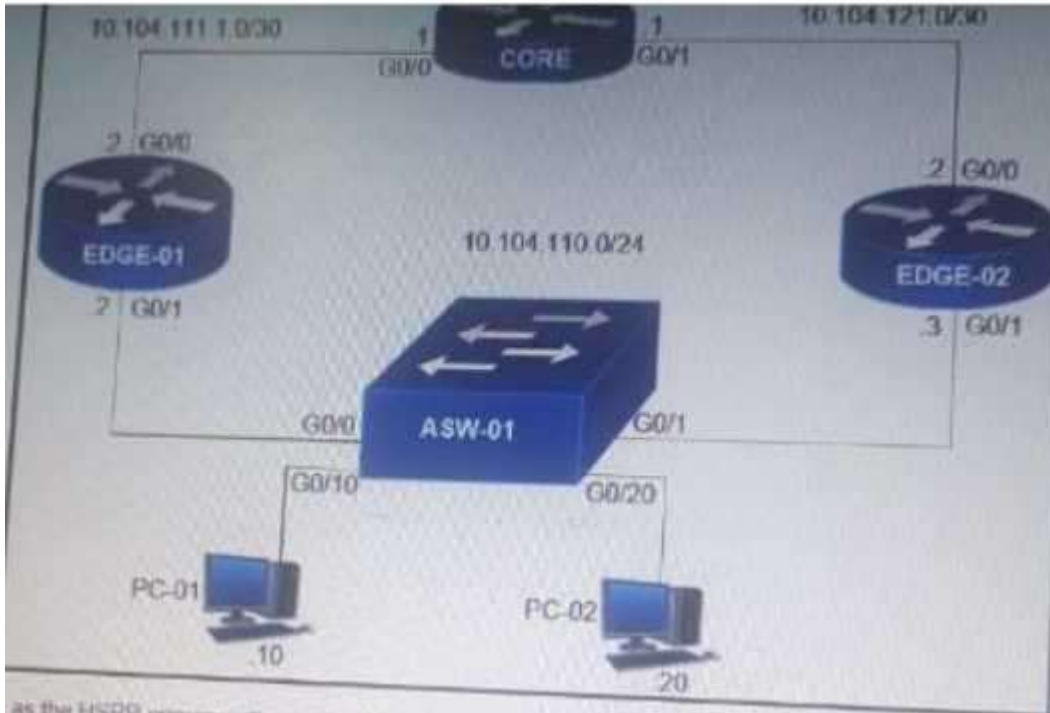
Answer: BE

Explanation:

Priority values are 0, 4096, 8192, 12288, 16384, 20480, 24576, 28672, 32768, 36864, 40960, 45056, 49152, 53248, 57344, and 61440. All other values are rejected.

QUESTION 226

Refer to the exhibit. Edge-01 is currently operational as the HSRP primary with priority 110. Which command on Edge-02 causes it to take over the forwarding role when Edge-01 is down?



- A. standby 10 priority
- B. standby 10 preempt
- C. standby 10 track
- D. standby 10 timers

Answer: A

QUESTION 227

What is the purpose of an RP in PIM?

- A. send join messages toward a multicast source SPT
- B. ensure the shortest path from the multicast source to the receiver.
- C. receive IGMP joins from multicast receivers.
- D. secure the communication channel between the multicast sender and receiver.

Answer: A

QUESTION 228

You are configuring a controller that runs Cisco IOS XE by using the CLI. Which three configuration options are used for 802.11w Protected Management Frames? (Choose three.)

- A. mandatory
- B. association-comeback
- C. SA teardown protection
- D. saquery-retry-time
- E. enable
- F. comeback-time

Answer: ABD