

➤ **Vendor: Cisco**➤ **Exam Code: 350-501**➤ **Exam Name: Implementing and Operating Cisco Service Provider
Network Core Technologies (SPCOR)**➤ **New Updated Questions from [Braindump2go](#) (Updated in [Oct./2020](#))****[Visit Braindump2go and Download Full Version 350-501 Exam Dumps](#)****QUESTION 134**

Refer to the exhibit. While troubleshooting the network, a network operator with an employee id: 3812:12:993 is trying to ping XR1.

Which result should the operator expect when trying to ping to an XR1 local address?

```
RP/0/RP0/CPU0:XR1#sh lpts pifib hardware entry location 0/0/CPU0
-----
L4 Protocol      : ICMP
VRF ID           : any
Destination IP   : any
Source IP/BFD Disc: any
Port/Type        : Port:8
Source Port      : any
Is Fragment      : 0
Is SYN           : any
Is Bundle        : na
Is Virtual       : na
Interface        : any
Slice            : 0
V/L/T/F          : 0/IPv4_STACK/0/ICMP-local
DestNode         : Local
DestAddr         : Punt
Accepted/Dropped : 16810/14
Po/Ar/Bu         : 19/0pps/100ms
State            : pl_pifib_state_complete
-----
```

- A. ICMP traffic works at a policed rate of 19 bytes per second every 100 ms
- B. All ICMP traffic responds successfully.
- C. All ICMP traffic is dropped.
- D. ICMP traffic works at a policed rate of 19 packets every 100 ms.

Answer: B

QUESTION 135

A network engineer is configuring a BGP route policy for the SUBNET prefix set. Matching traffic must be dropped, and

[350-501 Exam Dumps](#) [350-501 Exam Questions](#) [350-501 PDF Dumps](#) [350-501 VCE Dumps](#)

<https://www.braindump2go.com/350-501.html>

other traffic must have its MED value set to 400 and community 4:400 added to the route. Which configuration must an engineer apply?

- ☐ route-policy CISCO
if destination in SUBNET then
drop
else
set med 400
set community (4:400) additive
endif
end-policy
end
- ☐ route-policy CISCO
if destination in SUBNET then
drop
endif
set med 400
if community matches-any SUBNET then
set local-preference 400
set med 500
set community (4:400) additive
endif
end-policy
end
- ☐ route-policy SUBNET
if destination in SUBNET then
drop
endif
set med 400
set local-preference 400
if community matches-any SUBNET then
set community (4:400)
endif
end-policy
end
- ☐ route-policy SUBNET
if destination in BGP then
drop
else
set med 400
set community (4:400)
endif
end-policy
end

- A. Option A
- B. Option B
- C. Option C
- D. Option D

Answer: A

QUESTION 136

Refer to the exhibit. What does the number 2 mean in the configuration?

```
snmp-server community ciscotest ro 2
```

- A. It dictates the number of sessions that will be open with the SNMP manager
- B. It represents the version of SNMP running.
- C. It indicates two SNMP managers are able to read and write with the agent using community string ciscotest.
- D. It is the numeric name of the ACL that contains the list of SNMP managers with access to the agent.

Answer: D

QUESTION 137

Refer to the exhibit. Router 4 is added to the network and must be in the same area as router 1. Which NET should the engineer assign?

```
Router 1:
router isis
 net 49.0011.0000.0000.0001.00

Router 2:
router isis
 net 49.0001.0000.0000.0001.00

Router 3:
router isis
 net 49.0011.0000.0000.0002.00
```

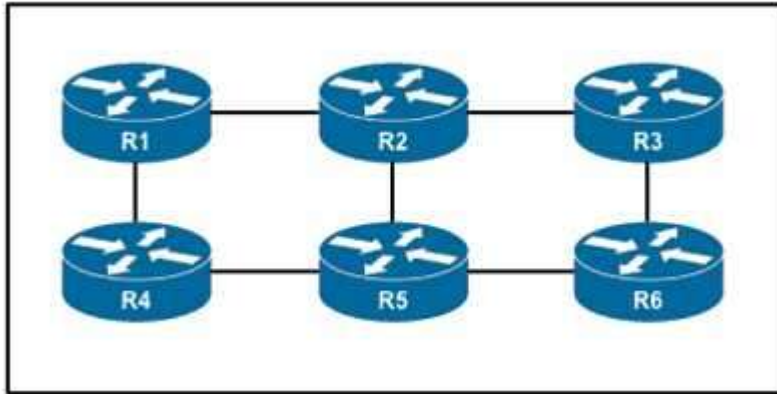
- A. 49.0001.0000.0000.0004.00
- B. 49.0111.0000.0000.0001.00
- C. 49.0011.0000.0000.0003.00
- D. 49.0011.0000.0000.0002.00

Answer: C

QUESTION 138

Refer to the exhibit. An engineer is configuring an administrative domain in the given multi-vendor environment with PIM-SM.

Which feature must the engineer implement so that devices will dynamically learn the RP?



- A. Auto-RP
- B. BIDIR-PIM
- C. SSM
- D. BSR

Answer: A

QUESTION 139

What causes multicast traffic to permanently stay on the shared tree and not switch to the source tree?

- A. The SPT threshold is set to infinity.
- B. The RP IP address is configured incorrectly.
- C. The RP announcements are being filtered.
- D. SSM range is being used.

Answer: C

QUESTION 140

Refer to the exhibit. A network engineer is configuring MPLS LDP synchronization on router R1. Which additional configuration must an engineer apply to R1 so that it will synchronize to OSPF process 1?

```
R1#configure terminal
R1(config)# mpls ip
R1(config)# mpls label protocol ldp

R1(config)# interface Ethernet1/0
R1(config-if)# ip address 10.1.1.1 255.255.255.255
R1(config-if)# mpls ip

R1(config)# router ospf 1
R1(config-router)# network 10.0.0.0 0.255.255.255 area 3
```

- ☐ R1(config)# router ospf 1
R1(config-router)# mpls ldp sync
- ☐ R1(config)# router ospf 1
R1(config-router)# mpls ldp autoconfig
- ☐ R1(config)# router ospf 1
R1(config-router)# mpls ldp igp sync holddown 60
- ☐ R1(config)# router ospf 1
R1(config-router)# no mpls ldp igp sync/strong>
R1(config-router)# bfd all-interfaces

- A. Option A
- B. Option B
- C. Option C
- D. Option D

Answer: A

QUESTION 141

What is a primary benefit of IPoATM or MPLS over ATM backbone service provider networks?

- A. dedicated circuits
- B. variable-length packets
- C. isochronous system
- D. fixed-length cells

Answer: A

QUESTION 142

How does model-driven telemetry use YANG?

- A. to reset network devices that malfunction
- B. to set informs and traps on clients to report back to a centralized server
- C. to subscribe to data that is streamed from a device
- D. to poll network devices on a 30-minute interval

Answer: C

QUESTION 143

Refer to the exhibit. Which show command should be implemented to display per-interface statistics about uRPF drops and suppressed drops?

```
!
configure terminal
ip cef distributed

interface gigabitethernet 1/0
ip verify unicast reverse-path 12
!
```

- A. show ip traffic
- B. show ip interface
- C. show cef interface
- D. show ip interface brief

Answer: B

QUESTION 144

Refer to the exhibit. What is the result of this configuration?

```
Router 1:

tacacs-server host 192.168.1.2 single-connection
tacacs-server key ciscotest
```

- A. Router 1 opens and closes a TCP connection to the TACACS+ server every time a user requires authorization.
- B. Router 1 and the TACACS+ server maintain one open connection between them only when network administrator is accessing the router with password ciscotest.
- C. Router 1 and the TACACS+ server maintain one open connection between them.
- D. Router 1 opens and closes a TCP connection to the TACACS+ server every time a user requires authentication.

Answer: B

QUESTION 145

Which OoS model allows hosts to report their OoS needs to the network?

- A. DiffServ
- B. CB-WFQ
- C. IntServ
- D. MQC

Answer: B

QUESTION 146

Refer to the exhibit. An engineer is configuring two routers to support MPLS LDP sessions between them. The R1 configuration is complete, and work has started on R2 as shown.

Which additional configuration must the engineer apply to R2 to complete the task?


```
R2# configure terminal
R2(config)# interface Ethernet1/0
R2(config-if)# ip address 10.1.1.1 255.255.255.255
```

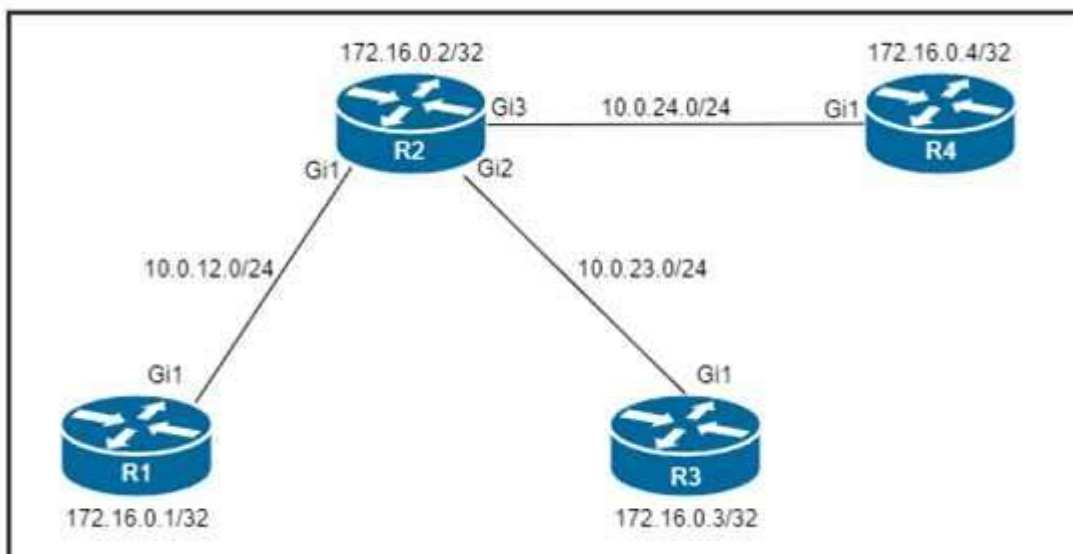
- R2(config)# mpls label protocol ldp
R2(config)# interface Ethernet1/0
R2(config-if)# mpls bgp forwarding
- R2(config)# mpls label protocol ldp
R2(config)# interface Ethernet1/1
R2(config-if)# ip vrf forwarding CISCO
R2(config-if)# ip ospf network point-to-point
- R2(config)# mpls ip
R2(config)# mpls label protocol ldp
R2(config)# interface Ethernet1/0
R2(config-if)# mpls ip
- R2(config)# mpls label protocol ldp
R2(config)# interface Ethernet1/0
R2(config-if)# ip vrf forwarding CISCO
R2(config-if)# ip ospf 1 area 0

- A. Option A
- B. Option B
- C. Option C
- D. Option D

Answer: C

QUESTION 147

Refer to the exhibit. Which configuration must be applied to each of the four routers on the network to reduce LDP LIB size and advertise label bindings for the /32 loopback IP space only?



- ☐ config t
ip prefix-list LOOPBACKS seq 5 permit 0.0.0.0/0 le 32
mpls ldp label
allocate global prefix-list LOOPBACKS
end
- ☐ config t
access-list 10 permit 172.16.0.0 0.0.0.7
access-list 20 permit 10.0.0.0 0.0.31.255
no mpls ldp advertise-labels
mpls ldp advertise-labels for 10 to 20
end
- ☐ config t
access-list 10 permit 172.16.0.0 0.0.0.7
access-list 20 permit 172.16.0.0 0.0.0.7
no mpls ldp advertise-labels
mpls ldp advertise-labels for 10 to 20
end
- ☐ config t
mpls ldp label
allocate global host-routes
end

- A. Option A
- B. Option B
- C. Option C
- D. Option D

Answer: A

QUESTION 148

Refer to the exhibit. Which type of DDoS attack will be mitigated by this configuration?

```
interface gigabitethernet 0/2
no ip directed-broadcast
```

- A. SYN flood
- B. smurf attack
- C. SIP INVITE flood attacks
- D. teardrop attack

Answer: B

QUESTION 149

Drag and Drop Question

Refer to the exhibit. An engineer wants to determine which paths are best, second best, third best, and fourth best. Drag and drop the peer addresses on the left to the corresponding BGP best-path selection order on the right.


```

R1#show ip bgp
BGP table version is 3, local router ID is 50.50.50.1
Status codes: s suppressed, d damped, h history, * valid, > best, i - internal,
               r RIB-failure, S Stale
Origin codes: i - IGP, e - EGP, ? - incomplete

   Network        Next Hop           Metric LocPrf Weight Path
*> 22.22.22.22/32  50.50.50.2             0         100 500 ?
*                  40.40.40.2             0          200   0 400 ?
*                  30.30.30.2             0           0 300 300 ?
*                  20.20.20.2             0           0 200 ?
R1#show ip bgp 22.22.22.22
BGP routing table entry for 22.22.22.22/32, version 3
Paths: (4 available, best #1, table Default-IP-Routing-Table)
Flag: 0x820
  Advertised to update-groups:
    1
  500
    50.50.50.2 from 50.50.50.2 (50.50.50.2)
      Origin incomplete, metric 0, localpref 100, weight 100, valid, external, best
  400
    40.40.40.2 from 40.40.40.2 (40.40.40.2)
      Origin incomplete, metric 0, localpref 200, valid, external
  300 300
    30.30.30.2 from 30.30.30.2 (30.30.30.2)
      Origin incomplete, metric 0, localpref 100, valid, external
  200
    20.20.20.2 from 20.20.20.2 (20.20.20.2)
      Origin incomplete, metric 0, localpref 100, valid, external

```

20.20.20.2	Best Path
30.30.30.2	2nd Best Path
40.40.40.2	3rd Best Path
50.50.50.2	4th Best Path

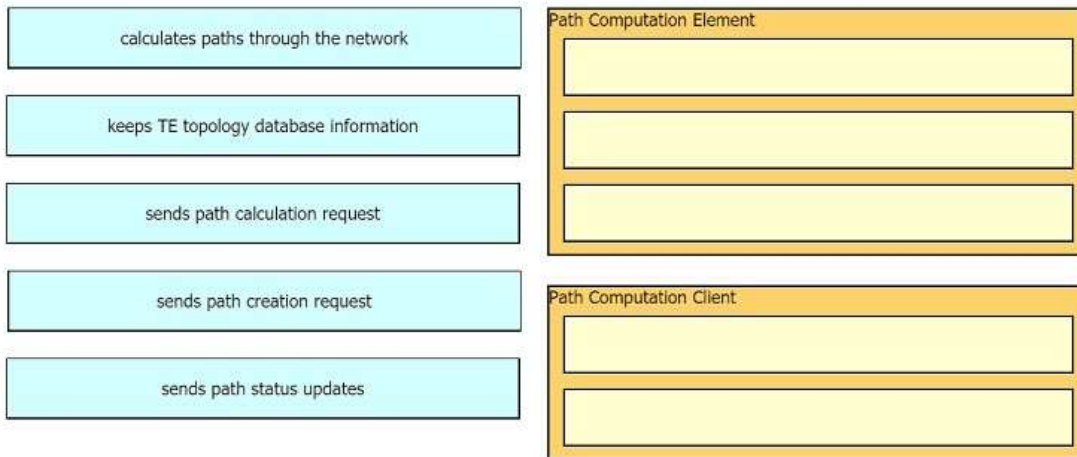
Answer:

50.50.50.2
40.40.40.2
20.20.20.2
30.30.30.2

QUESTION 150

Drag and Drop Question

Drag and drop the functions from the left onto the Path Computation Element Protocol roles on the right.



Answer:

