

➤ **Vendor: Cisco**➤ **Exam Code: 350-601**➤ **Exam Name: Implementing and Operating Cisco Data Center Core Technologies (DCCOR)**➤ **New Updated Questions from [Braindump2go](https://www.braindump2go.com)**➤ **(Updated in [December/2021](#))****[Visit Braindump2go and Download Full Version 350-601 Exam Dumps](#)****QUESTION 290**

Drag and Drop Question

An engineer must configure the HSRP protocol to implement redundancy using two Cisco Nexus Series Switches, in addition, the HSRP must meet these requirements:

- switch1 must retain the primary role if switch2 goes offline.
- switch1 must retain the primary role until normal conditions are restored.
- switch1 and switch2 must ensure that the routing tables are converged before taking the active role.
- switch2 must retain the primary role if the default gateway is not reachable.

Drag and drop the configuration commands from the right to the left to meet the requirements. The commands are used more than once. Not all commands are used.

! switch1	
track 100 ip route 0.0.0.0/0 reachability	
interface ethernet 1/1	
ip 209.165.200.226/27	
hsrp 200	
ip 209.165.200.225	
priority 210	
<input type="text"/>	<input type="text"/>
<input type="text"/>	<input type="text"/>
no shutdown	
! switch2	
track 100 ip route 0.0.0.0/0 reachability	
interface ethernet 1/1	
ip 209.165.200.227/27	
hsrp 200	
ip 209.165.200.225	
<input type="text"/>	<input type="text"/>
<input type="text"/>	<input type="text"/>
no shutdown	

Answer:**[350-601 Exam Dumps](#) [350-601 Exam Questions](#) [350-601 PDF Dumps](#) [350-601 VCE Dumps](#)****<https://www.braindump2go.com/350-601.html>**

```
! switch1
track 100 ip route 0.0.0.0/0 reachability

interface ethernet 1/1
ip 209.165.200.226/27

hsrp 200
ip 209.165.200.225
priority 210
    track 100 decrement 200
    preempt delay minimum 30
no shutdown

! switch2
track 100 ip route 0.0.0.0/0 reachability

interface ethernet 1/1
ip 209.165.200.227/27

hsrp 200
ip 209.165.200.225
    track 100 decrement 200
    preempt delay minimum 30
no shutdown
```

preempt delay minimum 30

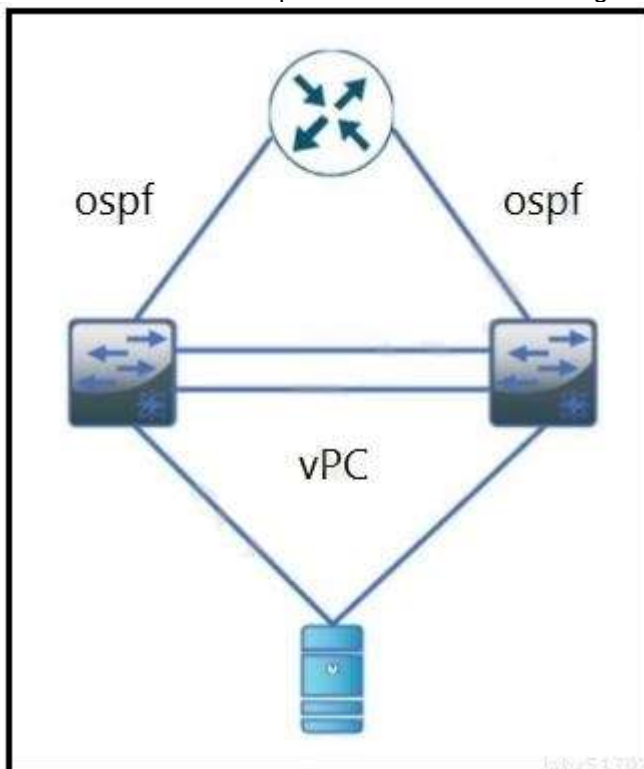
track 100 decrement 200

track 200 decrement 200

preempt sync 30

QUESTION 291

Refer to the exhibit. During a vPC peer switch reload, there is packet loss between the server and the router. Which action must be taken to prevent this behavior during future reloads?



- A. Set the routed uplink ports of the Cisco Nexus peers as orphans.
- B. Increase the vPC delay restore timer.
- C. Disable vPC ARP synchronize on the vPC peers.
- D. Decrease the OSPF hello and dead interval timers.

Answer: B

QUESTION 292

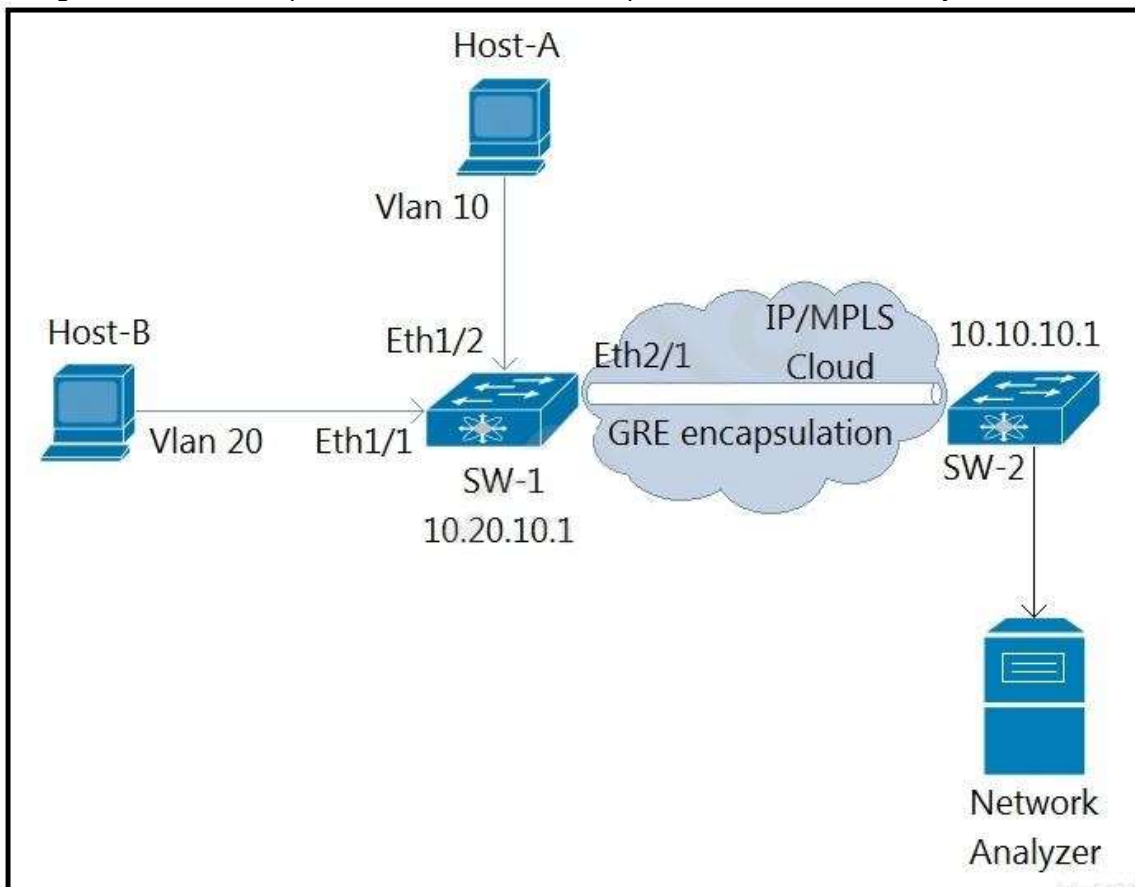
A Cisco ACI engineer must configure an access port on a Cisco ACI leaf switch. The access policy should be configured so that it supports L3Out connectivity concurrently with several EPGs that are mapped to this interface with the static port method. How should the access policy be configured?

- A. by linking the interface policy group to multiple Attachable Access Entity Profiles
- B. with two interface policy groups that are linked to the same interface profile port selector
- C. by mapping a single physical domain, mapped to the L3out and EPG interfaces
- D. with a single Attachable Access Entity Profile that is linked to the corresponding routed domain and physical domain

Answer: A

QUESTION 293

Refer to the exhibit. An engineer monitors ingress traffic from Host-A and all traffic for VLAN 20 from Host-B. Which configuration must be implemented to monitor and export traffic to Network Analyzer?



- A. SW-1(config)# **monitor session 5**
SW-1(config-monitor)# **source interface ethernet 1/2 rx**
SW-1(config-monitor)# **source interface ethernet 1/1 tx**
SW-1(config-monitor)# **source vlan 20 both**

[350-601 Exam Dumps](#) [350-601 Exam Questions](#) [350-601 PDF Dumps](#) [350-601 VCE Dumps](#)

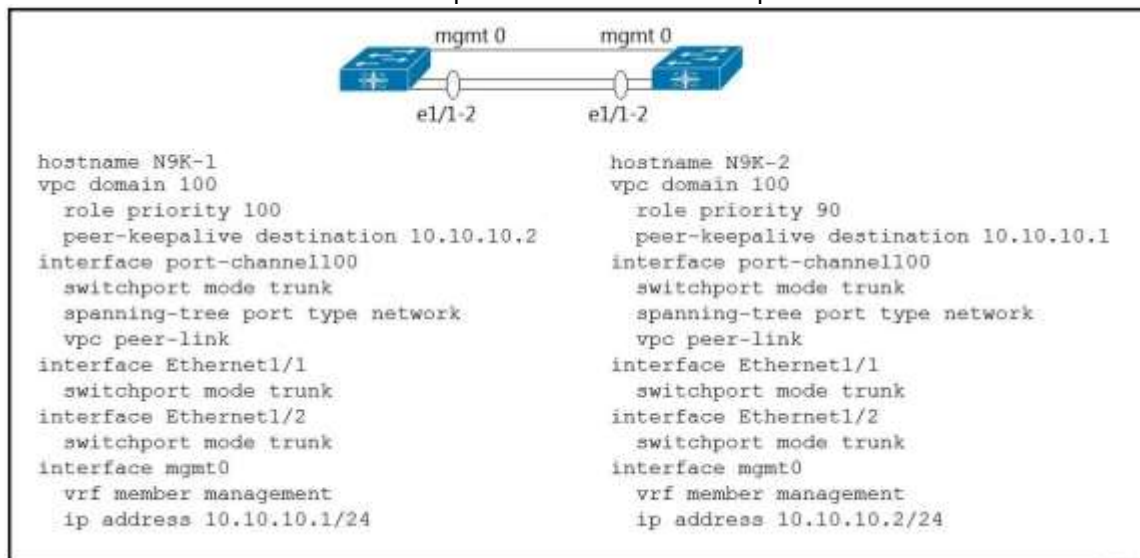
<https://www.braindump2go.com/350-601.html>

- SW-1(config-monitor)# destination ip 10.10.10.1
 SW-1(config-monitor)# no shut
- B. SW-1(config)# monitor session 5 type erspan-source
 SW-1(config-erspan-src)# source interface ethernet 1/2 rx
 SW-1(config-erspan-src)# source vlan 20 both
 SW-1(config-erspan-src)# destination ip 10.10.10.1
 SW-1(config-erspan-src)# erspan-id 111
 SW-1(config-erspan-src)# no shut
- C. SW-1(config)# monitor session 5
 SW-1(config-monitor)# source interface ethernet 1/2 rx
 SW-1(config-monitor)# source interface ethernet 1/1 both
 SW-1(config-monitor)# source vlan 20 both
 SW-1(config-monitor)# destination interface ethernet 2/1
 SW-1(config-monitor)# no shut
- D. SW-1(config)# monitor session 5 type erspan
 SW-1(config-erspan-src)# source interface ethernet 1/2 rx
 SW-1(config-erspan-src)# source interface ethernet 1/1 both
 SW-1(config-erspan-src)# destination ip 10.10.10.1
 SW-1(config-erspan-src)# mtu 1000
 SW-1(config-erspan-src)# no shut

Answer: B

QUESTION 294

Refer to the exhibit. Which action completes the vPC domain implementation?



- A. Add the vPC member ports to the vPC channel group.
 B. Configure the system MAC on the vPC domain.
 C. Include the VRF management on the vPC domain.
 D. Allow VLANs on the vPC peer link member interfaces.

Answer: D

QUESTION 295

Refer to the exhibit. A network engineer is implementing a configuration checkpoint on a Cisco Nexus 9000 Series Switch. The configuration must skip any existing vPC configuration errors and must complete it there are any configuration errors. The engineer finished the vPC domain configuration part. Which command completes the checkpoint implementation?

```
rollback running-config checkpoint system-fm-vpc output-omitted
```

- A. best-effort
- B. stop-at-first-failure
- C. atomic
- D. verbose

Answer: A

QUESTION 296

An engineer must implement a VXLAN-based data center interconnect. The long-distance transport provided by a service provider is IP-based, supports a maximum MTU of 1554 bytes, and does not support outbound traffic replication. Which action must be taken to build the data center interconnect?

- A. Announce host reachability over BGP.
- B. Create an IP access list and associate it with VNI to replicate traffic to remote VTEPs.
- C. Configure a route map to associate the IPs of the remote VTEPs.
- D. Implement BGP EVPN ingress replication.

Answer: D

QUESTION 297

An engineer must perform an initial configuration of VXLAN Tunnel End-Point functionality on the Cisco Nexus 9000 Series platform. All the necessary features are already enabled on the switch. Which configuration set must be used to accomplish this goal?

- A. NX9K(config)# **interface loopback0**
NX9K(config-if)# **ip address 10.10.10.11/32**
NX9K(config)# **interface VLAN10**
NX9K(config-if)# **ip unnumbered loopback0**
NX9K(config)# **interface nve1**
NX9K(contig-if-nve)# **source-interface loopback0**
- B. NX9K(config)# **interface loopback0**
NX9K(config-if)# **ip address 10.10.10.11/32**
NX9K(config)# **interface overlay0**
NX9K(config-if-overlay)# **source-interface loopback0**
NX9K(config)# **interface VLAN10**
NX9K(contig-if-nve)# **source-interface loopback0**
- C. NX9K(config)# **interface loopback0**
NX9K(config-if)# **ip address 10.10.10.11/32**
NX9K(config)# **interface tunnel1**
NX9K(config-if)# **tunnel source loopback0**
NX9K(config)# **interface ethernet1/1**
NX9K(contig-if)# **ip unnumbered loopback0**
- D. NX9K(config)# **interface loopback0**
NX9K(config-if)# **ip address 10.10.10.11/32**
NX9K(config)# **interface nve1**
NX9K(config-if-nve)# **source-interface loopback0**
NX9K(config)# **interface ethernet1/1**
NX9K(contig-if)# **ip unnumbered loopback0**

Answer: D

QUESTION 298

An engineer must perform a software upgrade on a production Cisco Nexus 7000 Series Switch. Before the upgrade

[350-601 Exam Dumps](#) [350-601 Exam Questions](#) [350-601 PDF Dumps](#) [350-601 VCE Dumps](#)

<https://www.braindump2go.com/350-601.html>

activity, the requirement is for all ports to be shut down and routing protocols to terminate gracefully. Which feature must be used to meet these requirements?

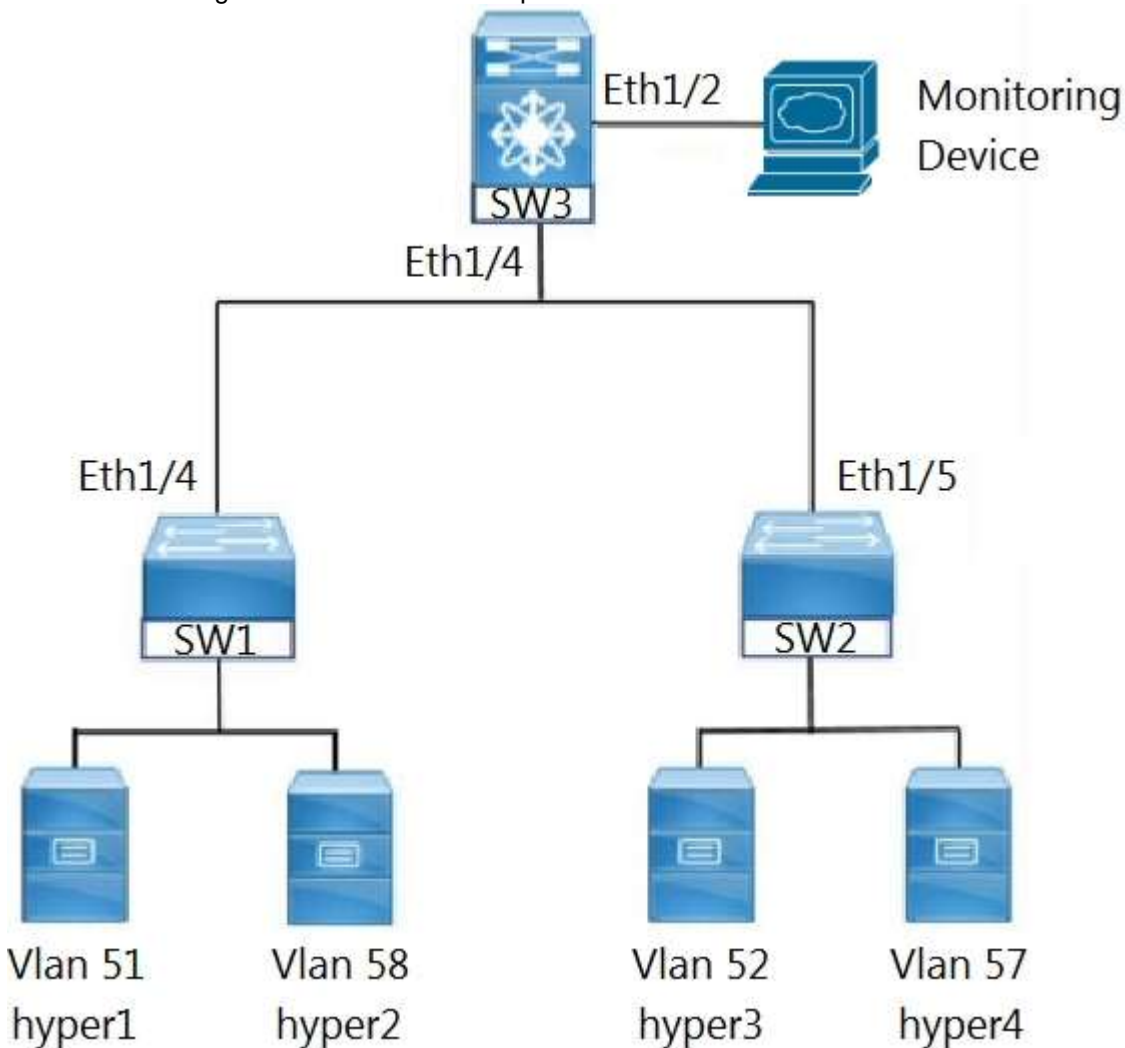
- A. Switch Profile
- B. Service Profile Template
- C. Maintenance Mode Profile
- D. Configuration Profile

Answer: C

QUESTION 299

Drag and Drop Question

Refer to the exhibit. An engineer must monitor the Ethernet port and the corresponding VLAN traffic for the hyper4 device. The SW3 device is a Cisco Nexus 7000 Series Switch. Drag and drop the code snippets from the right into the boxes in the configuration to meet these requirements.



!SW3 configuration

interface ethernet 1/2

 switchport

monitor session 2

 source interface

 destination interface

 source

interface vlan 57

vlan 57

ethernet 1/2

ethernet 1/4

monitor

Answer:

!SW3 configuration

interface ethernet 1/2

 switchport

monitor session 2

 source interface

 destination interface

 source

interface vlan 57

QUESTION 300

Drag and Drop Question

Drag and drop the network assurance concepts from the left onto the corresponding benefits on the right.

Cisco Tetration	allows close to real-time data monitoring
Data Management Engine	confirms that the network operates consistently with business requirements
Cisco Network Assurance Engine	offers overall protection and enables analysis of the network in real time to identify security incidents faster
Streaming Telemetry	allows the characteristics to be presented as object properties

Answer:

Streaming Telemetry
Cisco Network Assurance Engine
Cisco Tetration
Data Management Engine

QUESTION 301

An engineer must perform a backup operation of the Cisco UCS system. The backup must be transferred to a secure location using UDP and must contain information about VLANs, VSANs, one other policies. Also, the operations team requires the backup file to be in a human-readable format. Which configuration set meets these requirements?

- A. Type: All configuration
Protocol: FTP
- B. Type: Full state
Protocol: SFTP
- C. Type: Logical configuration
Protocol: TFTP
- D. Type: System configuration
Protocol: SCP

Answer: C

QUESTION 302

When deploying a Cisco HyperFlex edge with a pair of switches, what is the minimum number of interfaces in trunk mode required on each HX node?

- A. 1
- B. 2
- C. 4
- D. 6

Answer: B

QUESTION 303

What is a benefit of independent resource scaling in Cisco HyperFlex hybrid architecture?

- A. remote booting of converged servers
- B. flexible expansion or compute, caching, and capacity
- C. multivendor converged node hardware support
- D. support for compute nodes with third-party storage

Answer: B

QUESTION 304

Which NFS version uses the TCP protocol and needs only one IP pan to run the service?

- A. NFSv1
- B. NFSv2
- C. NFSv3
- D. NFSv4

Answer: C

QUESTION 305

Refer to the exhibit. A network engineer created a new role to be assigned to the SAN users. The requirement is for users to have these characteristics:

- permitted to show access to the system, SNMP, module, and hardware information.
- permitted to **run debug zone** and **exec fcping** commands.
- restricted from accessing **show feature environment** command.

Which configuration set meets these requirements?

```
MDS-B# show role
Role: network-admin
Description: Predefined Network Admin group. This role cannot be modified.
Vsan policy: permit (default)
```

Rule	Type	Command-type	Feature
1	permit	clear	*
2	permit	config	*
3	permit	debug	*
4	permit	exec	*
5	permit	show	*

```
Role: default-role
Description: This is a system defined role and applies to all users.
Vsan policy: permit (default)
```

Rule	Type	Command-type	Feature
1	permit	show	system
2	permit	show	snmp
3	permit	show	module
4	permit	show	hardware
5	permit	show	environment

```
Role: san-users
Description: SAN users
Vsan policy: permit (default)
```

Rule	Type	Command-type	Feature
1	permit	debug	zone
2	permit	exec	fcping

- MDS-B(config)# **role name default-role**
MDS-B(config-role)# **rule 5 deny show feature environment**
- MDS-B(config)# **role name default-role**
MDS-B(config-role)# **rule 5 permit show feature module**
MDS-B(config-role)# **rule 6 deny ***
- MDS-B(config)# **role name san-users**
MDS-B(config-role)# **rule 3 deny show feature environment**
- MDS-B(config)# **role name san-users**
MDS-B(config-role)# **rule 3 permit show feature system**
MDS-B(config-role)# **rule 4 permit show feature hardware**
MDS-B(config-role)# **rule 5 permit show feature module**

Answer: C

QUESTION 306

What is a characteristic of the NFS protocol?

- A. It uses remote procedure calls with TCP/IP for transport.
- B. It is used for booting Cisco UCS B-Series servers.
- C. It is used to access a storage array at a block level.
- D. It uses UDP and HTTP as its transport.

Answer: A