

➤ **Vendor:** Cisco

➤ **Exam Code:** 350-801

➤ **Exam Name:** Implementing and Operating Cisco Collaboration Core Technologies (CLCOR)

➤ **New Updated Questions from [Braindump2go](#) (Updated in [June/2021](#))**

**[Visit Braindump2go and Download Full Version 350-801 Exam Dumps](#)**

#### QUESTION 223

What dialled numbers match this Cisco UCM route pattern?  
1[23]XX

- A. 1200 through 1300 only
- B. 1200 through 1399 only
- C. 12300 through 12399 only
- D. 1230 through 1239 only

**Answer:** A

#### QUESTION 224

Refer to the exhibit. A customer wants the SIP 200 OK shown to advertise codecs in the following order:

```
Server: LISCU-SIPGateway/10.8.140.23
CSeq: 101 OPTIONS
Allow: INVITE, OPTIONS, BYE, CANCEL, ACK, PRACK, UPDATE, REFER, SUBSCRIBE, NOTIFY,
INFO, REGISTER
Allow-Events: telephone-event
Accept: application/sdp
Supported: 100rel, timer, resource-priority, replaces, sdp-anat
Content-Type: application/sdp
Content-Length: 369

v=0
o=CiscoSystemsSIP-GW-UserAgent 6414 4717 IN IP4 10.8.140.23
s=SIP Call
c=IN IP4 10.8.140.23
t=0 0
m=audio 0 RTP/AVP 18 0 8 4 15
c=IN IP4 10.8.140.23
m=image 0 udptl t38
c=IN IP4 10.8.140.23
a=T38FaxVersion:0
a=T38MaxBitRate:9600
a=T38FaxRateManagement:transferredTCF
a=T38FaxMaxBuffer:200
a=T38FaxMaxDatagram:320
a=T38FaxUdpEC:t38UDPRedundancy

SDP MIME VERSION:
* G.729
* G.711u
* G.711a
* G.723
* G.720
```

After correcting the codec preferences. What should the audio payload show in the SIP Traces?

- m=audio 0 RTP/AVP 18 8 4 15
- m=audio 0 RTP/AVP 4 0 8 18 15
- m=audio 0 RTP/AVP 0 8 18 4 15
- m=audio 0 RTP/AVP 18 0 8 4 15

- A. Option A
- B. Option B
- C. Option C
- D. Option D

**Answer:** D

#### QUESTION 225

Where is urgent priority enabled to bypass the T302 timer?

- A. route partition
- B. CTI port
- C. directory number
- D. transformation pattern

**Answer:** A

#### QUESTION 226

A collaboration engineer must optimize the dial plan within Cisco UCM. There are multiple remote sites. And each site has its own route patterns and local gateways. What should the engineer do on the cisco UCM to optimize the dial plan?

- A. Configure a Standard Local Route Group to use a single route pattern for all calls within the cluster.
- B. Create a centralized dial plan with a Cisco UCM Session Management Edition cluster or a Cisco gatekeeper.
- C. Implement ILS with GDPR so the dial plan can dynamically replicate across clusters.
- D. Leverage Cisco UCM Express as SRST so the phones can have more features of each remote site

**Answer:** C

#### QUESTION 227

[350-801 Exam Dumps](#) [350-801 Exam Questions](#) [350-801 PDF Dumps](#) [350-801 VCE Dumps](#)

<https://www.braindump2go.com/350-801.html>

An engineer must configure a Cisco ISR 4000 as an MGCP gateway to download its MGCP-specific configuration from Cisco UCM. Which Cisco IOS configuration snippet accomplishes this task?

- ```
ISR4K(config)# ip tftp source-interface GigabitEthernet 0/0/1
ISR4K(config)# mgcp call-agent 10.1.2.3 2427 service-type mgcp version 0.1
ISR4K(config)# ccm-manager config server 10.1.2.3
ISR4K(config)# ccm-manager config
ISR4K(config)# ccm-manager mgcp
ISR4K(config)# mgcp
```
- ```
ISR4K(config)# ip tftp source-interface GigabitEthernet 0/0/1
ISR4K(config)# mgcp call-agent 10.1.2.3 2427 service-type mgcp version 11.5.1
ISR4K(config)# ccm-manager config server 10.1.2.3
ISR4K(config)# ccm-manager config
ISR4K(config)# ccm-manager mgcp
ISR4K(config)# mgcp
```
- ```
ISR4K(config)# ip tftp source-interface GigabitEthernet 0/0/1
ISR4K(config)# mgcp call-agent 10.1.2.3 2427 service-type mgcp version 0.1
ISR4K(config)# ccm-manager config server 10.1.2.3
ISR4K(config)# ccm-manager config download
ISR4K(config)# ccm-manager mgcp
ISR4K(config)# mgcp
```
- ```
ISR4K(config)# ip tftp source-interface GigabitEthernet 0/0/1
ISR4K(config)# mgcp call-agent 10.1.2.3 2428 service-type mgcp version 0.1
ISR4K(config)# ccm-manager config server 10.1.2.3
ISR4K(config)# ccm-manager config
ISR4K(config)# ccm-manager mgcp
ISR4K(config)# mgcp
```

- A. Option A
- B. Option B
- C. Option C
- D. Option D

Answer: C

#### QUESTION 228

An engineer must manually register an analog port with Cisco UCM using the MGCP protocol. Which commands are required?

- ```
mgcp
mgcp call-agent 172.16.1.252
ccm-manager config server 172.16.1.252
ccm-manager config
ccm-manager mgcp
!
dial-peer voice 1 pots
application MGCPAPP
port 1/0/0
shut
no shut
!
```
- ```
no mgcp
mgcp call-agent 172.16.1.252
ccm-manager config server 172.16.1.252
ccm-manager config
ccm-manager mgcp
!
dial-peer voice 1 pots
port 1/0/0
shut
no shut
!
```

```
mgcp
mgcp call-agent 172.16.1.252
ccm-manager config server 172.16.1.252
ccm-manager config
ccm-manager mgcp
!
dial-peer voice 1 pots
port 1/0/0
shut
no shut
!
```

```
mgcp
ccm-manager config server 172.16.1.252
ccm-manager config
!
dial-peer voice 1 pots
application MGCPAPP
port 1/0/0
!
```

- A. Option A
- B. Option B
- C. Option C
- D. Option D

**Answer: A**

**QUESTION 229**

Refer to the exhibit. An engineer must configure DHCP service on the cisco service on the Cisco UCM. In which field must the engineer configure the server IP to provide the configuration files to the endpoint?



The screenshot shows a configuration form titled "DHCP Subnet Information". It contains various fields for configuring DHCP services, including:

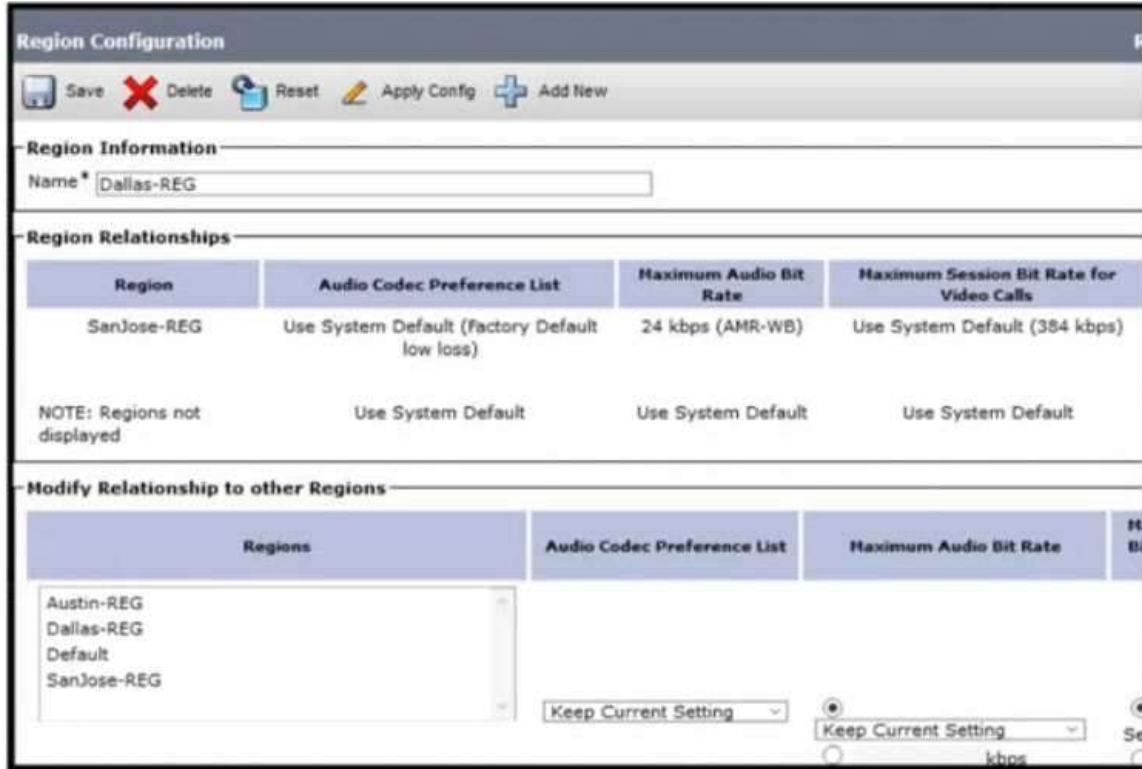
- DHCP Server\* (Dropdown menu, currently set to "-- Not Selected --")
- Subnet IPv4 Address\*
- Primary Start IPv4 Address\*
- Primary End IPv4 Address\*
- Secondary Start IPv4 Address
- Secondary End IPv4 Address
- Primary Router IPv4 Address
- Secondary Router IPv4 Address
- IPv4 Subnet Mask\*
- Domain Name
- Primary DNS IPv4 Address
- Secondary DNS IPv4 Address
- TFTP Server Name (Option 66)
- Primary TFTP Server IPv4 Address (Option 150)
- Secondary TFTP Server IPv4 Address (Option 150)
- Bootstrap Server IPv4 Address
- ARP Cache Timeout(sec)\*
- IP Address Lease Time(sec)\*
- Renewal(T1) Time(sec)\*
- Rebinding(T2) Time(sec)\*

- A. Primary Router IPv4 Address
- B. Primary TFTP Server IPv4 Address (Option 150)
- C. Primary Start IPv4 Address
- D. Bootstrap Server IPv4 Address

**Answer: B**

**QUESTION 230**

Refer to the exhibit. Which codec should an engineer select for a call mode between "Dallas-REG" & "Austin-REG"?



- A. MP4A-LATM
- B. G.729
- C. OPUS
- D. G.711

Answer: B

**QUESTION 231**

In an eleven-class queuing model following Realtime, Best effort, and scavenger queuing rules. What recommended percentage of bandwidth must be allocated for interactive video?

- A. 10%
- B. 12%
- C. 15%
- D. 20%

Answer: C

**QUESTION 232**

Which two actions must be taken to provision a new device using self-provisioning?

- A. Enable the self-provisioning IVR in the Cisco UCM
- B. Import the user profile to the corporate LDAP directory.
- C. Link the appropriate service profile to the provisioning template.
- D. Link the appropriate universal device template to the user profile.
- E. Ensure the user has a directory URI and a primary extension.

Answer: AD

**QUESTION 233**

Refer to the exhibit. What is the registration state of the analog port in this debug output?

```
000142: *Apr 23 19:41:49.050: MGCP Packet received from 192.168.100.100:2427---->
ANEP 4 AALM/30/SU0/08VG320.cisco.local MGCP 0.1
F: X, A, I
<---

000143: *Apr 23 19:41:49.050: MGCP Packet sent to 192.168.100.101:2427---->
200 4
I:
X: 2
L: p:10-20, a:PCMU:PCMA:G.nx64, b:64, e:on, qc:l, s:on, t:10, r:g, nt:IN, v:T:G:D:L:H:R:ATM:SST:PRE
L: p:10-220, a:G.729:G.729a:G.729b, b:8, e:on, qc:l, s:on, t:10, r:g, nt:IN, v:T:G:D:L:H:R:ATM:SST:PRE
L: p:10-110, a:G.726-16:G.728, b:16, e:on, qc:l, s:on, t:10, r:g, nt:IN, v:T:G:D:L:H:R:ATM:SST:PRE
L: p:10-70, a:G.726-24, b:24, e:on, qc:l, s:on, t:10, r:g, nt:IN, v:T:G:D:L:H:R:ATM:SST:PRE
L: p:10-50, a:G.726-32, b:32, e:on, qc:l, s:on, t:10, r:g, nt:IN, v:T:G:D:L:H:R:ATM:SST:PRE
L: p:30-270, a:G.723.1-H:G.723:G.723.1a-H, b:6, e:on, qc:l, s:on, t:10, r:g, nt:IN, v:T:G:D:L:H:R:ATM:SST:PRE
L: p:30-330, a:G.723.1-L:G.723.1a-L, b:5, e:on, qc:l, s:on, t:10, r:g, nt:IN, v:T:G:D:L:H:R:ATM:SST:PRE
M: sendonly, recvnonly, sendrecv, inactive, loopback, contest, data, netloop, netvtext
<---
```

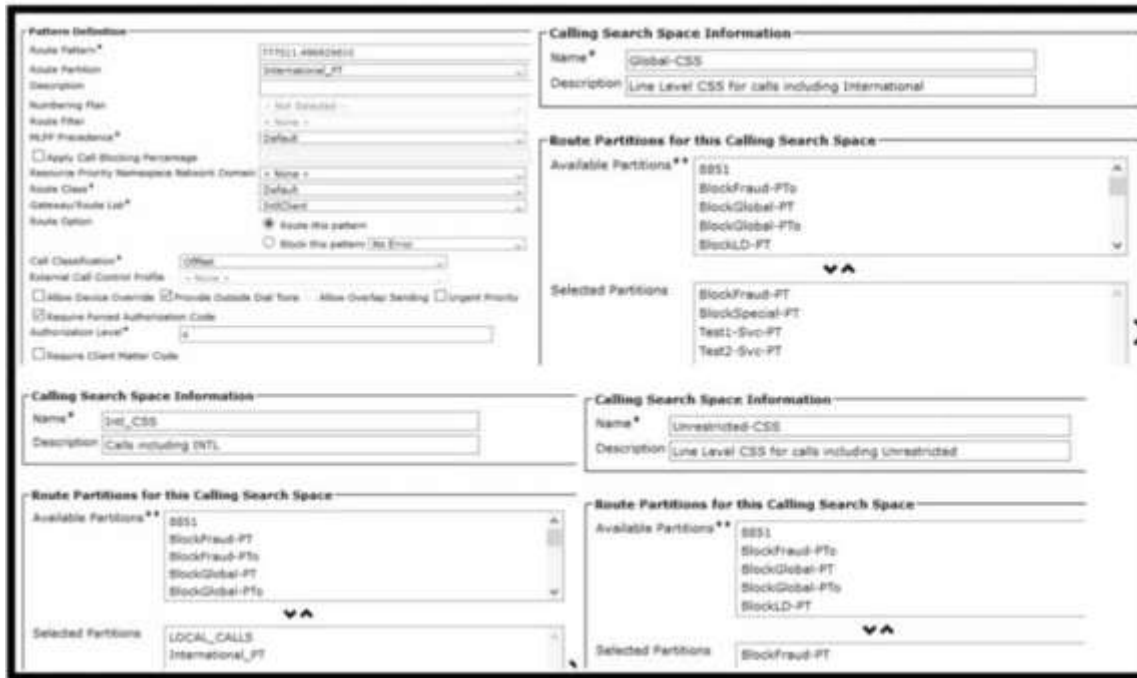
- A. The MGCP Gateway is not communicating with the Cisco UCM.
- B. The analog port failed to register to Cisco UCM with an error code 200.
- C. The analog port is currently shut down.
- D. The analog port is registered to Cisco UCM.

Answer: D

**QUESTION 234**

Refer to the exhibit. How must the +E.164 translation pattern be configured to reach international number 496929810?





- Pattern= \+.496929810, CSS=Unrestricted-CSS, PreDot, Prefix=777011
- Pattern= \+.777011496929810, CSS=Intl\_CSS
- Pattern= \+.011496929810, CSS=Global-CSS, PreDot, Prefix=777
- Pattern= \+.496929810, CSS=Intl\_CSS, PreDot, Prefix=777011

- A. Option A
- B. Option B
- C. Option C
- D. Option D

Answer: B

**QUESTION 235**

Refer to the exhibit. An engineer must configure a SIP route pattern using domain routing with destination +13135551212. The domain ciscocm1.jupiter.com resolves to 192.168.1.3. How must the IPV4 pattern be configured?

- +13135551212@192.168.1.3
- ciscocm1.jupiter.com
- 192.168.1.3
- \+13135551212@192.168.1.3

- A. Option A
- B. Option B
- C. Option C
- D. Option D

Answer: B

**QUESTION 236**

After an administrator installs the Cisco Jabber Client, it fails to register with the Cisco UCM server. Which two actions should be taken to troubleshoot this problem? (Choose two.)

- A. Verify the installation of the LMHOST file on the PC
- B. Verify the configuration of the DNS SRV record.
- C. Verify corporate firewall settings for client connections.
- D. Verify Layer 3 connectivity on the gateway.
- E. Reboot the Cisco Unified Border Element Gateway.

Answer: BC

**QUESTION 237**

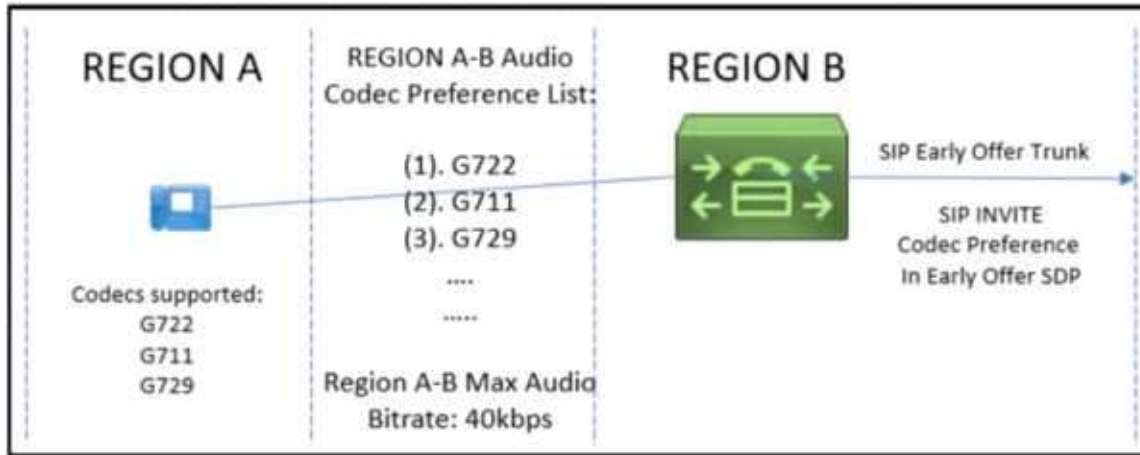
What does average rate limiting allow?

- A. transmits traffic bursts up to the Bc size
- B. more traffic than the CIR to be sent when there is available bandwidth
- C. bandwidth up to the Be size
- D. traffic to burst to the Be size when there is available bandwidth

Answer: D

**QUESTION 238**

Refer to the exhibit. In this Cisco UCM setup configured for EARLY offer, what is the codec preference line in the initial SIP INVITE SDP?



- A. m=audio 16444 RTP/AVP 9 18 101
- B. m=audio 16444 RTP/AVP 0 8 18 101
- C. m=audio 16444 RTP/AVP 18 101
- D. m=audio 16444 RTP/AVP 9 0 8 18 101

Answer: C

**QUESTION 239**

Refer to the exhibit. The SDP offer/answer has been completed successfully but there is no DTMF when users press keys. What is the cause of the issue?

```

INVITE sip:2002@10.10.10.10:5060 SIP/2.0
[..truncated..]
v=0
o=UAC 6107 7816 IN IP4 10.10.10.11
s=SIP Call
c=IN IP4 10.10.10.11
t=0 0
m=audio 8190 RTP/AVP 18 110
c=IN IP4 10.10.10.11
a=rtpmap:18 G729/8000
a=fmtp:18 annexb=no
a=rtpmap:110 telephone-event/8000
a=fmtp:110 0-16
a=ptime:20

SIP/2.0 200 OK
[..truncated..]
v=0
o=UAS 4692 9609 IN IP4 10.10.10.10
s=SIP Call
c=IN IP4 10.10.10.10
t=0 0
m=audio 8056 RTP/AVP 18
c=IN IP4 10.10.10.10
a=rtpmap:18 G729/8000
a=fmtp:18 annexb=no
a=ptime:20
    
```

- A. Payload type 110 was negotiated rather than type 101.
- B. DTMF was negotiated properly in these messages.
- C. DTMF was not negotiated on the call.
- D. G.729 rather than G.711ulaw was negotiated.

Answer: C

**QUESTION 240**

Which two features of Cisco Prime Collaboration Assurance require advanced licensing? (Choose two.)

- A. real time alarm browse
- B. multicluster support
- C. call quality monitoring
- D. email notifications
- E. customizable events

Answer: BC

**QUESTION 241**

An administrator must implement toll fraud prevention on cisco UCM using these parameters:

- Enable Forced Authorization Code 112211.
- Set an authorization level of 3 for the route pattern 8005551212.
- Require no access code to dial 10-digit numbers.

How must the route pattern be implemented?

- A. Pattern = 3.800xxxxxx
- B. Pattern = 8005551212.1122113
- C. Pattern = 8005xxxxxx
- D. Pattern = 1122113.8005551212

Answer: C

**QUESTION 242**

An administrator installs a new Cisco Telepresence video endpoint and receives this error: "AOR is not permitted by Allow/Deny list." Which action should be taken to resolve this problem?

- A. Correct the restriction policy settings.
- B. Change the SIP trunk configuration.
- C. Upload a new policy In VCS.
- D. Reboot the VCS server and attempt reregistration.

Answer: A

**QUESTION 243**

What are two characteristics of priority queuing? (Choose two.)

- A. It guarantees bandwidth for user-defined traffic classes.
- B. It applies strict priority to user-defined traffic classes.
- C. It allocates an equal share of bandwidth to each flow.
- D. It places traffic into one of four queues.
- E. It ensures that critical traffic queues are serviced first.

Answer: DE

**QUESTION 244**

Refer to the exhibit. An administrator accesses the terminal of a Cisco UCM and starts a packet capture. Which two commands must the administrator use on Cisco UCM to generate DNS traffic? (Choose two.)

```
hqcucmpub.pkinane.com - PuTTY
login as: admin
admin@hqcucmpub.pkinane.com's password:
Command Line Interface is starting up, please wait ...

Welcome to the Platform Command Line Interface

VMware Installation:
 2 vCPU: Intel(R) Xeon(R) CPU E5-2699 v3 @ 2.30GHz
Disk 1: 110GB, Partitions aligned
8192 Mbytes RAM
WARNING: DNS unreachable

admin:
```

- A. show version active
- B. utils diagnose lest
- C. show cdp neighbor
- D. utils ntp status
- E. utils diagnose module validate\_network

Answer: BE

**QUESTION 245**

Which IP precedence value maps to DSCP EF?

- A. 0
- B. 1
- C. 3
- D. 5

Answer: D

**QUESTION 246**

AN administrator needs to help remote employee make a free call to an international destination. The administrator calls the employee, then conferences in the international party. The administrator drops the call, and the employee and the international party continue their conversation. Which action prevents this type of toll fraud in the Cisco USM?

- A. Set service parameter "Advanced Ad Hoc Conference" to FALSE
- B. Set service parameter "Drop Ad Hoc Conference" to "Do not allow outside parties "
- C. Set service parameter "Drop Ad Hoc Conference" to "When Conference Controller leaves"
- D. Set service parameter "Advanced Ad Hoc Conference" to 2.

**Answer: C**

**QUESTION 247**

Which destination does cisco UCM use DNS to resolve fully qualified domain names to IP addresses?

- A. Cisco UCM Name
- B. primary TFTP server for option 150
- C. SIP trunk
- D. application server name

**Answer: C**

**QUESTION 248**

Which program is required to deploy the Cisco Jabbar client on an on-premises Cisco collaboration solution?

- A. Cisco Expressway-C
- B. Cisco UCM IM and Presence
- C. Cisco Unity Connection
- D. Cisco UCM

**Answer: D**

**QUESTION 249**

What makes Cisco Unified Broder Element a better choice then a conventional Session border controller?

- A. Voice policy
- B. SIP security
- C. DTMF interworking
- D. Address hiding

**Answer: A**