

➤ **Vendor: Cisco**

➤ **Exam Code: 400-007**

➤ **Exam Name: Cisco Certified Design Expert (CCDE v3.0) Written Exam**

➤ **New Updated Questions from [Braindump2go](#) (Updated in [June/2022](#))**

Visit Braindump2go and Download Full Version 400-007 Exam Dumps

QUESTION 46

Which design principal improves network resiliency?

- A. Added load-balancing
- B. Added redundancy
- C. Added confidentiality
- D. Added reliability

Answer: B

QUESTION 47

When designing a WAN that will be carrying real-time traffic, what are two important reasons to consider serialization delay? (Choose two)

- A. Serialization delays are invariable because they depend only on the line rate of the interface
- B. Serialization delays are variable because they depend on the line rate of the interface and on the type of the packet being serialized.
- C. Serialization delay is the time required to transmit the packet on the physical media.
- D. Serialization delays are variable because they depend only on the size of the packet being serialized
- E. Serialization delay depends not only on the line rate of the interface but also on the size of the packet

Answer: BD

QUESTION 48

Which two aspects are considered when designing a dual hub dual DMVPN cloud topology? (Choose two)

- A. will only work with single-tier headend architecture
- B. hub sites must connect to both DMVPN clouds
- C. recommended for high availability
- D. spoke-to-spoke traffic will transit the hub unless spokes exchange dynamic routing directly
- E. requires all sites to have dual Internet connections

Answer: AC

QUESTION 49

A green data center is being deployed and a design requirement is to be able to readily scale server virtualization. Which IETF standard technology can provide this requirement?

- A. data center bridging

[400-007 Exam Dumps](#) [400-007 Exam Questions](#) [400-007 PDF Dumps](#) [400-007 VCE Dumps](#)

<https://www.braindump2go.com/400-007.html>

- B. unified fabric
- C. Transparent Interconnection of Lots of Links
- D. fabric path

Answer: C

QUESTION 50

Which two foundational aspects of IoT are still evolving and being worked on by the industry at large? (Choose two)

- A. WiFi protocols
- B. Regulatory domains
- C. Low energy Bluetooth sensors
- D. IoT consortia
- E. Standards

Answer: AC

QUESTION 51

Your network operations team is deploying Access Control Lists (ACLs) across your Internet gateways. They wish to place an ACL inbound on the Internet gateway interface facing the core network (the "trusted" interface). Which IP address would the ACL need for traffic sourced from the inside interface, to match the source address of the traffic?

- A. inside global
- B. outside global
- C. inside local
- D. outside local

Answer: C

QUESTION 52

You are designing a network for a branch office. In order to improve convergence time, you are required to use the BFD feature.

Which four routing protocols can you use to facilitate this? (Choose four.)

- A. IS-IS
- B. static
- C. RIP
- D. EIGRP
- E. BGP

Answer: ABDE

QUESTION 53

A senior network designer suggests that you should improve network convergence times by reducing BGP timers between your CE router and the PE router of the service provider.

Which two factors should you consider to adjust the timer values? (Choose two.)

- A. service provider agreement to support tuned timers
- B. manual updates to the peer groups
- C. service provider scheduling of changes to the PE
- D. number of routes on the CE router
- E. number of VRFs on the PE router

Answer: AD

QUESTION 54

You were tasked to enhance the security of a network with these characteristics:

- A pool of servers is accessed by numerous data centers and remote sites
- The servers are accessed via a cluster of firewalls
- The firewalls are configured properly and are not dropping traffic
- The firewalls occasionally cause asymmetric routing of traffic within the server data center.

Which technology should you recommend to enhance security by limiting traffic that could originate from a hacker compromising a workstation and redirecting flows at the servers?

- A. Poison certain subnets by adding static routes to Null0 on the core switches connected to the pool of servers.
- B. Deploy uRPF strict mode.
- C. Limit sources of traffic that exit the server-facing interface of the firewall cluster with ACLs.
- D. Deploy uRPF loose mode

Answer: C

QUESTION 55

A network architect must redesign a service provider edge, where multiservice and multitenant PEs are currently present.

Which design feature should be minimized in the new design to achieve reliability?

- A. bridging
- B. fate sharing
- C. redundancy
- D. unicast overlay routing

Answer: B

QUESTION 56

You are designing a network running both IPv4 and IPv6 to deploy QoS.

Which consideration is correct about the QoS for IPv4 and IPv6?

- A. IPv4 and IPv6 traffic types can use queuing mechanisms such as LLQ, PQ and CQ.
- B. IPv6 packet classification is only available with process switching, whereas IPv4 packet classification is available with both process switching and CEF.
- C. IPv6 and IPv4 traffic types can use a single QoS policy to match both protocols
- D. Different congestion management mechanisms need to be used for IPv4 and IPv6 traffic types

Answer: C

QUESTION 57

A company plans to use BFD between its routers to detect a connectivity problem inside the switched network.

An IPS is transparently installed between the switches.

Which packets should the IPS forward for BFD to work under all circumstances?

- A. Fragmented packet with the do-not-fragment bit set
- B. IP packets with broadcast IP source addresses
- C. IP packets with the multicast IP source address
- D. IP packet with the multicast IP destination address
- E. IP packets with identical source and destination IP addresses
- F. IP packets with the destination IP address 0.0.0.0.

Answer: E

QUESTION 58

A Tier-3 Service Provider is evolving into a Tier-2 Service Provider due to the amount of Enterprise business it is receiving.

The network engineers are re-evaluating their IP/MPLS design considerations in order to support duplicate/overlapping IP addressing from their Enterprise customers within each Layer3 VPN.

Which concept would need to be reviewed to ensure stability in their network?

- A. Assigning unique Route Distinguishers
- B. Assigning unique Route Target ID'S
- C. Assigning unique IP address space for the Enterprise NAT/Firewalls
- D. Assigning unique VRF ID's to each L3VPN

Answer: A

QUESTION 59

Which three Cisco products are used in conjunction with Red Hat to provide an NFVi solution? (Choose three.)

- A. Cisco Prime Service Catalog
- B. Cisco Open Virtual Switch
- C. Cisco Nexus switches
- D. Cisco UCS
- E. Cisco Open Container Platform
- F. Cisco Virtual Network Function

Answer: CDF

QUESTION 60

What are two key design principles when using a hierarchical core-distribution-access network model? (Choose two)

- A. A hierarchical network design model aids fault isolation
- B. The core layer is designed first, followed by the distribution layer and then the access layer
- C. The core layer provides server access in a small campus.
- D. A hierarchical network design facilitates changes
- E. The core layer controls access to resources for security

Answer: AD

QUESTION 61

A Service Provider is designing a solution for a managed CE service to a number of local customers using a single CE platform and wants to have logical separation on the CE platform using Virtual Routing and Forwarding (VRF) based on IP address ranges or packet length.

Which is the most scalable solution to provide this type of VRF Selection process on the CE edge device?

- A. Static Routes for Route Leaking
- B. Policy Based Routing
- C. OSPF per VRF Instance
- D. Multi-Protocol BGP

Answer: B

QUESTION 62

An MPLS service provider is offering a standard EoMPLS-based VPLS service to CustomerA providing Layer 2 connectivity between a central site and approximately 100 remote sites.

CustomerA wants to use the VPLS network to carry its internal multicast video feeds which are sourced at the central site and consist of 20 groups at Mbps each.

Which service provider recommendation offers the most scalability?

[400-007 Exam Dumps](#) [400-007 Exam Questions](#) [400-007 PDF Dumps](#) [400-007 VCE Dumps](#)

<https://www.braindump2go.com/400-007.html>

- A. EoMPLS-based VPLS can carry multicast traffic in a scalable manner
- B. Use a mesh of GRE tunnels to carry the streams between sites
- C. Enable snooping mechanisms on the provider PE routers.
- D. Replace VPLS with a Layer 3 MVPN solution to carry the streams between sites

Answer: D

QUESTION 63

What best describes the difference between Automation and Orchestration?

- A. Automation refers to an automatic process for completing a single task and Orchestration refers to assembling and coordinating a set of tasks and conditions.
- B. Automation describes a hands-off configuration process while Orchestration refers to sets of automation tasks that require the network administrator to coordinate
- C. Automation refers to an automatic process for completing multiple tasks with conditions and Orchestration refers to executing tasks in parallel.
- D. Automation refers to scripting languages (Python, Ansible etc.) and Orchestration refers to commercial products that control configuration deployment

Answer: A

QUESTION 64

A customer asks you to perform a high level review of their upcoming WAN refresh for remote sites. The review is specially focused on their retail store operations consisting of 500+ locations connected via multipoint IPsec VPN solution.

Which routing protocol would be valid but would also be the most restrictive for the expansion of this deployment model?

- A. EIGRP
- B. IS-IS
- C. OSPF
- D. BGP

Answer: B

QUESTION 65

As part of a new network design documentation, you are required to explain the reason for choosing Cisco FabricPath for Layer 2 loop avoidance.

Which two elements help Cisco FabricPath mitigate Layer 2 loops if they happen in the Layer 2 MP network? (Choose two)

- A. MAC tunneling
- B. IS-IS multipath
- C. RPF check
- D. TTL header

Answer: CD

QUESTION 66

Which design benefit of PortFast is true?

- A. PortFast does not generate a spanning tree topology change when a station on a port is connected or disconnected
- B. PortFast disables spanning tree on the port, which puts the port into the forwarding state immediately after it is connected

[400-007 Exam Dumps](#) [400-007 Exam Questions](#) [400-007 PDF Dumps](#) [400-007 VCE Dumps](#)

<https://www.braindump2go.com/400-007.html>

- C. PortFast allows small, unmanaged switches to be plugged into ports of access switches without risking switch loops
- D. PortFast detects one-way communications on the physical port, which prevents switch loops
- E. PortFast prevents switch loops that are caused by a unidirectional point to point link condition on Rapid PVST+ and MST
- F. PortFast prevents switched traffic from traversing suboptimal paths on the network

Answer: A

QUESTION 67

You are a network designer and you must ensure that the network you design is secure.

How do you plan to prevent infected devices on your network from sourcing random DDoS attacks using forged source address?

- A. ACL based forwarding
- B. unicast RPF loose mode
- C. unicast RPF strict mode
- D. ACL filtering by destination

Answer: C

QUESTION 68

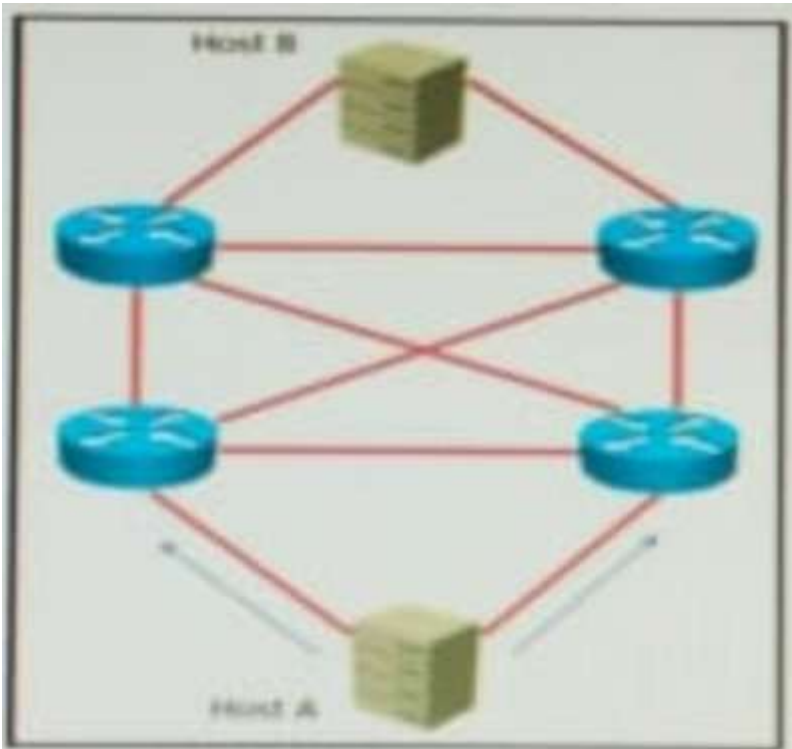
Which protocol does an SD-Access wireless Access Point use for its fabric data plane?

- A. GRE
- B. MPLS
- C. VXLAN
- D. LISP
- E. CAPWAP

Answer: C

QUESTION 69

Refer to the exhibit. AFI links are P2P Layer 3. A high availability application is synchronizing data between host A and host B.



To increase chance of delivery the same data is sent twice from host A on two different NICs toward the two NICs on host B.

Which solution must be deployed in the network to ensure that any failure in the network does not trigger data loss on host B?

- A. EIGRP with feasible successors
- B. BFD
- C. IP Fast Reroute
- D. Static routes

Answer: C

QUESTION 70

Which encoding format does cisco ios XE software support for NETCONF?

- A. It supports HTML encoding for NETCONF
- B. It supports YAML encoding for NETCONF
- C. It supports XML encoding for NETCONF
- D. It supports JSON encoding for NETCONF

Answer: C

QUESTION 71

Which two design solutions ensure sub 50 msec of the convergence time after a link failure in the network? (Choose two)

- A. BFD
- B. Ti-LFA
- C. minimal BGP scan time
- D. MPLS-FRR
- E. IGP fast hello

Answer: BD

QUESTION 72

You want to split an Ethernet domain in two.

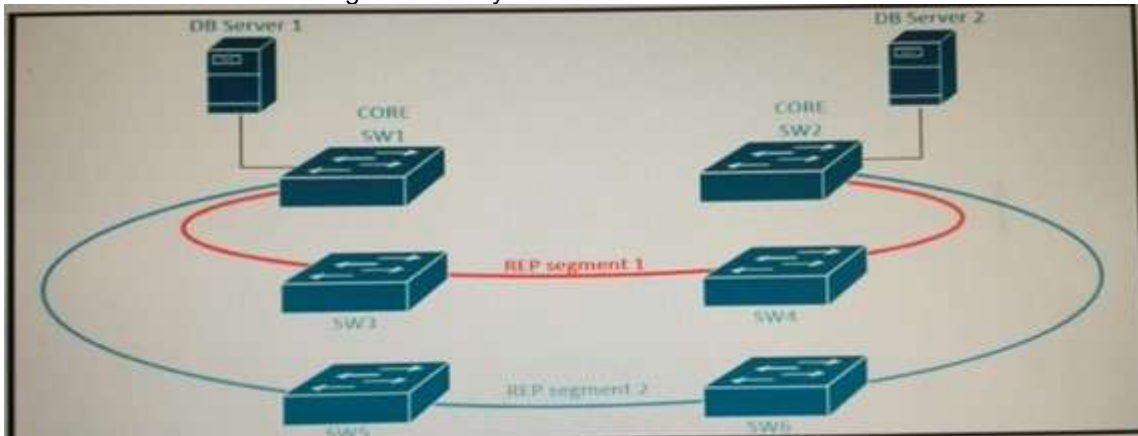
Which parameter must be unique in this design to keep the two domains separated?

- A. VTP domain
- B. VTP password
- C. STP type
- D. VLAN ID

Answer: D

QUESTION 73

Refer to the exhibit. A new high availability DB server cluster is installed in the network.



These two servers require high bandwidth and low latency Layer 2 connectivity for database replication. Which solution supports these requirements?

- A. Add two new links between SW1 and SW2 configured as LACP trunk with STP
- B. Add secondary links to REP segments 1 and 2
- C. Add two new links between SW1 and SW2 configured as REP segment 3
- D. Add two new links between SW1 and SW2 configured as REP segments 1 and 2 respectively

Answer: C

QUESTION 74

VPLS is implemented in a Layer 2 network with 2000 VLANs.

What is the primary concern to ensure successful deployment of VPLS?

- A. Flooding is necessary to propagate MAC address reachability information
- B. PE scalability
- C. The underlying transport mechanism
- D. VLAN scalability

Answer: B

QUESTION 75

Which option is a fate-sharing characteristic in regards to network design?

- A. A failure of a single element causes the entire service to fail
- B. It protects the network against failures in the distribution layer
- C. It acts as a stateful forwarding device

D. It provides data sequencing and acknowledgment mechanisms

Answer: A

QUESTION 76

Drag and Drop Question

Drag and drop the design use cases from the left onto the correct uRPF techniques used to prevent spoofing attacks. Not all options are used.

to check whether a route to a given IP address exists without regard to its incoming interface	strict mode
to filter Bogon IP addresses	feasible mode
to ensure the incoming interface is the best reverse path to a given IP address	loose mode
when there are alternate routes to a given IP address	

Answer:

to check whether a route to a given IP address exists without regard to its incoming interface	to ensure the incoming interface is the best reverse path to a given IP address
	when there are alternate routes to a given IP address
	to filter Bogon IP addresses