

➤ **Vendor: Cisco**

➤ **Exam Code: 400-007**

➤ **Exam Name: Cisco Certified Design Expert (CCDE v3.0) Written Exam**

➤ **New Updated Questions from [Braindump2go](#) (Updated in [June/2022](#))**

Visit Braindump2go and Download Full Version 400-007 Exam Dumps

QUESTION 21

An enterprise that runs numerous proprietary applications has major issues with its on-premises server estate hardware, to the point where business-critical functions are compromised. The enterprise accelerates plans to migrate services to the cloud.

Which cloud service should be used if the enterprise wants to avoid hardware issues yet have control of its applications and operating system?

- A. SaaS
- B. PaaS
- C. IaaS
- D. hybrid cloud

Answer: C

QUESTION 22

Which two features control multicast traffic in a VLAN environment? (Choose two)

- A. IGMP snooping
- B. MLD snooping
- C. RGMP
- D. PIM snooping
- E. pruning

Answer: AB

QUESTION 23

Company XYZ wants to secure the data plane of their network.

Which two technologies can be included in the security design? (Choose two)

- A. DAI
- B. IP Source Guard
- C. BEEP
- D. CPPr
- E. MPP

Answer: AB

QUESTION 24

Company XYZ has a new network based on IPv6. Some of the subnets that they are planning to use will be confidential and need an addressing scheme that confines them to the local campus network.

Which type of IPv6 addresses can be used for these networks in the IPv6 addressing design?

[400-007 Exam Dumps](#) [400-007 Exam Questions](#) [400-007 PDF Dumps](#) [400-007 VCE Dumps](#)

<https://www.braindump2go.com/400-007.html>

- A. local addresses
- B. private addresses
- C. link-local addresses
- D. unique local addresses

Answer: D

QUESTION 25

An architect receives a business requirement from a CTO that states the RTO and RPO for a new system should be as close as possible to zero.

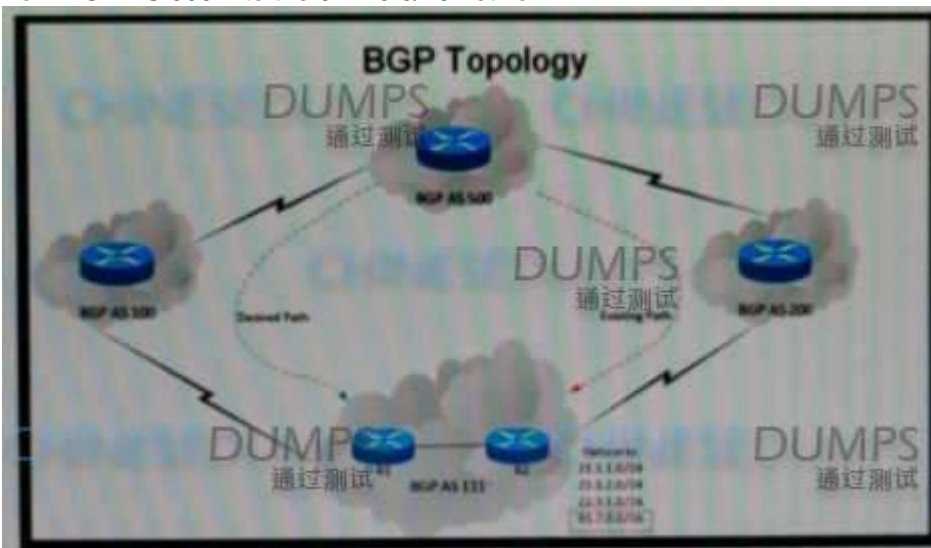
Which replication method and data center technology should be used?

- A. asynchronous replication over dual data centers via DWDM
- B. synchronous replication over geographically dispersed dual data centers via MPLS
- C. synchronous replication over dual data centers via Metro Ethernet
- D. asynchronous replication over geographically dispersed dual data centers via CWDM

Answer: C

QUESTION 26

Refer to the exhibit. An engineer has been asked to redesign the traffic flow toward AS 111 coming from AS 500. Traffic destined to AS 111 network 91.7.0.0/16 should come in via AS 100, while traffic destined to all other networks in AS 111 should continue to use the existing path. Which BGP attributes are best suited to control this inbound traffic coming from BGP AS 500 into the 91.7.0.0/16 network?



- A. Prepend AS path for the 91.7.0.0/16 network and set it for neighbor in AS 200.
- B. Use extended community for the 91.7.0.0/16 network, not advertising it to the bi-lateral peer.
- C. Use local preference on R1 for the networks that AS 500 advertises to AS 111.
- D. Set higher MED for neighbor in AS 100 to influence incoming traffic for the 91. 7.0.0/16 network.

Answer: A

QUESTION 27

A European national bank considers migrating its on-premises systems to a private cloud offering in a non-European location to significantly reduce IT costs.

What is a primary factor prior to migration?

- A. data governance

[400-007 Exam Dumps](#) [400-007 Exam Questions](#) [400-007 PDF Dumps](#) [400-007 VCE Dumps](#)

<https://www.braindump2go.com/400-007.html>

- B. additional latency
- C. security
- D. cloud connectivity

Answer: A

QUESTION 28

Company XYZ has 30 sites running a legacy private WAN architecture that connects to the Internet via multiple high-speed connections.

The company is now redesigning their network and must comply with these design requirements:

- Use a private WAN strategy that allows the sites to connect to each other directly and caters for future expansion.
- Use the Internet as the underlay for the private WAN. Securely transfer the corporate data over the private WAN.

Which two technologies should be Incorporated into the design of this network? (Choose two.)

- A. S-VTI
- B. IPsec
- C. DMVPN
- D. GET VPN
- E. PPTP

Answer: BC

QUESTION 29

Company XYZ wants to improve the security design of their network to include protection from reconnaissance and DoS attacks on their sub interfaces destined toward next hop routers.

Which technology can be used to prevent these types of attacks?

- A. MPP
- B. CPPr
- C. CoPP
- D. DPP

Answer: B

QUESTION 30

According to the CIA triad principles for network security design, which principle should be priority for a Zero Trust network?

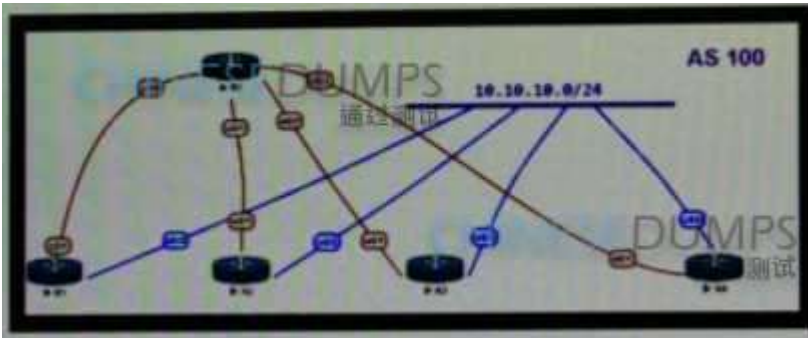
- A. requirement for data-in-motion encryption and 2FA authentication
- B. requirement for data-at-rest encryption for user identification within the VPN termination hardware
- C. categorization of systems, data, and enterprise BYOD assets that are connected to network zones based on individual privacy needs
- D. ensuring that authorized users have high-availability system access from defined zones to defined systems or zones

Answer: A

QUESTION 31

Refer to the exhibit. OSPF is running as the IGP to provide reachability to all AS100 networks. R3 and R4 are the current ABRs at the boundary of OSPF Area0 and Area1. Now BGP must be deployed within AS 100 because it will be receiving Internet routes from its eBGP peers (the service provider) connected to R1 and R2.

What is an optimal solution for this deployment to configure BGP relationships and redistribute BGP learned routes into OSPF?



- A. R5 should be configured as a route reflector for R1, R2, R3 and R4. BGP routes must be redistributed at R1 and R2 into OSPF.
- B. Configuration should be set up with R1 and R2, and R3 in one sub AS, with and R4 in another, and redistribution at R1 and R2.
- C. A full mesh should be deployed between all the routers with mutual redistribution to take place at R1 and R2.
- D. R1, R2, R3 and R4 must be set up with a neighbor relationship with R5 only must not be a route reflector.

Answer: C

QUESTION 32

Company ABC wants to minimize the risk of users plugging unauthorized switches and hubs into the network. Which two features can be used on the LAN access ports to support this design requirement? (Choose two.)

- A. Loop Guard
- B. PortFast
- C. DTF
- D. Root Guard
- E. BPDU Guard

Answer: BE

QUESTION 33

You are tasked with the design of a high available network. Which two features provide fail closed environments? (Choose two.)

- A. EIGRP
- B. RPVST+
- C. MST
- D. L2MP

Answer: AB

QUESTION 34

Which two characteristics apply to firewall transparent mode operations in a firewall solution design? (Choose two.)

- A. Changes in the existing IP addressing and subnets are required
- B. The firewall can participate actively on spanning tree.
- C. Multicast traffic can traverse the firewall.
- D. OSPF adjacencies can be established through the firewall
- E. The firewall acts like a router hop in the network.

Answer: CD

QUESTION 35

Your company wants to deploy a new data center infrastructure.
 Based on the requirements you have chosen VXLAN as encapsulation technology.
 The customer is concerned about miss-configuration of Layer 2 devices and DC wide outages caused by Layer 2 loops.
 What do you answer?

- A. VXLAN offers native loop avoidance mechanism
- B. Storm Control should be enabled on all ports
- C. VPC+ could prevent L2 loop on access ports
- D. BPDU Guard should be enabled on all VTEP access ports

Answer: D

QUESTION 36

Which two statements describe the usage of the IS-IS overload bit technique? (Choose two)

- A. If overload-bit is set on a Level 2 intermediate system, the other Level 2 intermediate systems in the topology will stop using the overloaded IS to forward Level 2 traffic However, the intermediate system can still forward Level 1 traffic
- B. It can be set in intermediate systems (IS-IS routers) to prioritize control plane CSNP packets.
- C. It can be used to automatically synchronize the link-state database between Level 1 intermediate systems
- D. It can be set in intermediate systems (IS-IS routers) to avoid traffic black holes until routing protocols are fully converged after a reload operation.
- E. It can be set in intermediate systems (IS-IS routers) to attract transit traffic from other intermediate systems

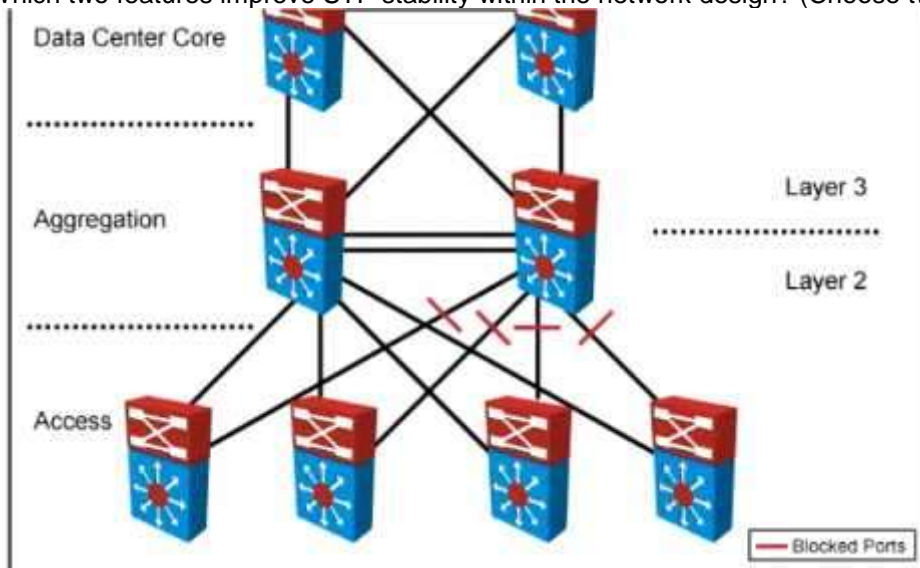
Answer: AD

QUESTION 37

Refer to the exhibit. Your company designed a network to allow server VLANs to span all access switches in a data center.

In the design, Layer 3 VLAN interfaces and HSRP are configured on the aggregation switches.

Which two features improve STP stability within the network design? (Choose two.)



- A. BPDU guard on access ports
- B. BPDU guard on the aggregation switch downlinks toward access switches

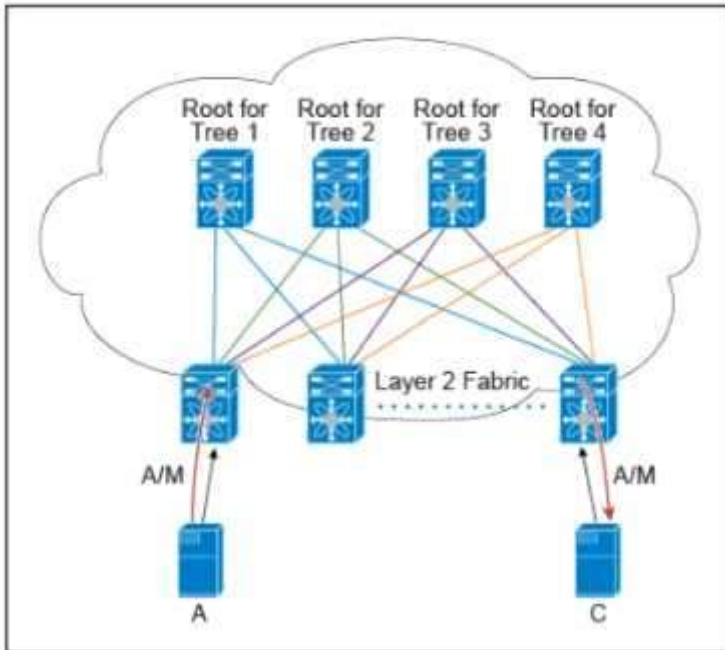
- C. root guard on the aggregation switch downlinks toward access switches
- D. root guard on access ports
- E. edge port on access ports
- F. access switch pairs explicitly determined to be root and backup root bridges

Answer: AE

QUESTION 38

Refer to the exhibit. There are multiple trees in the Cisco FabricPath. All switches in the Layer 2 fabric share the same view of each tree.

Which two concepts describe how the multicast traffic is load-balanced across this topology? (Choose two)



- A. A specific (S,G) traffic is not load-balanced
- B. All trees are utilized at the same level of the traffic rate
- C. Every leaf node assigns the specific (S,G) to the same tree.
- D. A specific (S,G) multicast traffic is load-balanced across all trees due to better link utilization efficiency.
- E. The multicast traffic is generally load-balanced across all trees

Answer: BD

QUESTION 39

Which mechanism provides Layer 2 fault isolation between data centers?

- A. fabric path
- B. OTL
- C. advanced VPLS
- D. LISP
- E. TRILL

Answer: D

QUESTION 40

You have been tasked with designing a data center interconnect to provide business continuity.

You want to encrypt the traffic over the DCI using IEEE 802.1AE MACsec to prevent the deployment of any firewall or

[400-007 Exam Dumps](#) [400-007 Exam Questions](#) [400-007 PDF Dumps](#) [400-007 VCE Dumps](#)

<https://www.braindump2go.com/400-007.html>

IPS.

Which two interconnect technologies support MACsec? (Choose two.)

- A. EoMPLS
- B. MPLS Layer 3 VPN
- C. DMVPN
- D. GET VPN
- E. KVPLS

Answer: AE

QUESTION 41

While reviewing an existing network design, you are discussing the characteristics of different STP versions.

Which protocol minimizes unicast flooding during a Topology Change Notification in a Layer 2 switched network with many VLANs?

- A. PVRSTP
- B. MST
- C. STP
- D. PVSTP+

Answer: A

QUESTION 42

A network design includes a long signaling delay in notifying the Layer 3 control plane that an interface has failed.

Which two of these actions would reduce that delay? (Choose two.)

- A. Increase network stability.
- B. Reduce the time for the network to reconverge.
- C. Increase the notification of interface flaps.
- D. Enable lower data link layer recovery systems to have an opportunity to restore the interface

Answer: BD

QUESTION 43

Which two possible drawbacks should you consider when introducing Network Functions Virtualization in a network design? (Choose two)

- A. Bandwidth utilization increases
- B. Traffic flows are suboptimal
- C. High-end routers are required to support NFV
- D. OpenFlow must be supported in the network
- E. An SDN orchestration layer is required to support NFV

Answer: CE

QUESTION 44

You are designing an Out of Band Cisco Network Admission Control. Layer 3 Real-IP Gateway deployment for a customer.

Which VLAN must be trunked back to the Clean Access Server from the access switch?

- A. authentication VLAN
- B. user VLAN
- C. untrusted VLAN
- D. management VLAN

Answer: D

QUESTION 45

A service provider hires you to design its new managed CE offering to meet these requirements:

- The CEs cannot run a routing protocol with the PE
- Provide the ability for equal or unequal ingress load balancing in dual-homed CE scenarios.
- Provide support for IPv6 customer routes
- Scale up to 250.000 CE devices per customer.
- Provide low operational management to scale customer growth.
- Utilize low-end (inexpensive) routing platforms for CE functionality.

Which tunneling technology do you recommend?

- A. FlexVPN
- B. point-to-point GRE
- C. DMVPN
- D. LISP

Answer: D