

➤ **Vendor: Microsoft**

➤ **Exam Code: AI-900**

➤ **Exam Name: Microsoft Azure AI Fundamentals**

➤ **New Updated Questions from [Braindump2go](#) (Updated in [Dec./2020](#))**

Visit Braindump2go and Download Full Version AI-900 Exam Dumps

QUESTION 42

You need to reduce the load on telephone operators by implementing a chatbot to answer simple questions with predefined answers.

Which two AI service should you use to achieve the goal? Each correct answer presents part of the solution.

NOTE: Each correct selection is worth one point.

- A. Text Analytics
- B. QnA Maker
- C. Azure Bot Service
- D. Translator Text

Answer: BC

Explanation:

Bots are a popular way to provide support through multiple communication channels. You can use the QnA Maker service and Azure Bot Service to create a bot that answers user questions.

Reference:

<https://docs.microsoft.com/en-us/learn/modules/build-faq-chatbot-qna-maker-azure-bot-service/>

QUESTION 43

Which two scenarios are examples of a conversational AI workload? Each correct answer presents a complete solution.

NOTE: Each correct selection is worth one point.

- A. a smart device in the home that responds to questions such as "What will the weather be like today?"
- B. a website that uses a knowledge base to interactively respond to users' questions
- C. assembly line machinery that autonomously inserts headlamps into cars
- D. monitoring the temperature of machinery to turn on a fan when the temperature reaches a specific threshold

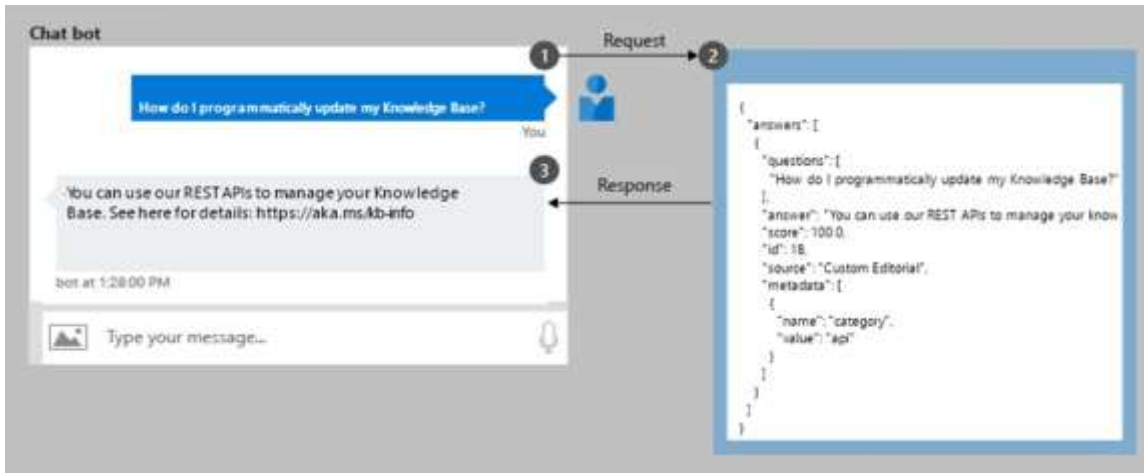
Answer: AB

QUESTION 44

You have the process shown in the following exhibit.

[AI-900 Exam Dumps](#) [AI-900 Exam Questions](#) [AI-900 PDF Dumps](#) [AI-900 VCE Dumps](#)

<https://www.braindump2go.com/ai-900.html>



Which type AI solution is shown in the diagram?

- A. a sentiment analysis solution
- B. a chatbot
- C. a machine learning model
- D. a computer vision application

Answer: B

QUESTION 45

You need to develop a web-based AI solution for a customer support system. Users must be able to interact with a web app that will guide them to the best resource or answer. Which service should you use?

- A. Custom Vision
- B. QnA Maker
- C. Translator Text
- D. Face

Answer: B

Explanation:

QnA Maker is a cloud-based API service that lets you create a conversational question-and-answer layer over your existing data. Use it to build a knowledge base by extracting questions and answers from your semi-structured content, including FAQs, manuals, and documents. Answer users' questions with the best answers from the QnAs in your knowledge base--automatically. Your knowledge base gets smarter, too, as it continually learns from user behavior.

Incorrect Answers:

A: Azure Custom Vision is a cognitive service that lets you build, deploy, and improve your own image classifiers. An image classifier is an AI service that applies labels (which represent classes) to images, according to their visual characteristics. Unlike the Computer Vision service, Custom Vision allows you to specify the labels to apply.

D: Azure Cognitive Services Face Detection API: At a minimum, each detected face corresponds to a faceRectangle field in the response. This set of pixel coordinates for the left, top, width, and height mark the located face. Using these coordinates, you can get the location of the face and its size. In the API response, faces are listed in size order from largest to smallest.

Reference:

<https://azure.microsoft.com/en-us/services/cognitive-services/qna-maker/>

QUESTION 46

Which AI service should you use to create a bot from a frequently asked questions (FAQ) document?

- A. QnA Maker
- B. Language Understanding (LUIS)

[AI-900 Exam Dumps](#) [AI-900 Exam Questions](#) [AI-900 PDF Dumps](#) [AI-900 VCE Dumps](#)

<https://www.braindump2go.com/ai-900.html>

- C. Text Analytics
- D. Speech

Answer: A

QUESTION 47

Which scenario is an example of a webchat bot?

- A. Determine whether reviews entered on a website for a concert are positive or negative, and then add a thumbs up or thumbs down emoji to the reviews.
- B. Translate into English questions entered by customers at a kiosk so that the appropriate person can call the customers back.
- C. Accept questions through email, and then route the email messages to the correct person based on the content of the message.
- D. From a website interface, answer common questions about scheduled events and ticket purchases for a music festival.

Answer: D

QUESTION 48

What is a Use Case for classification?

- A. Paleontologist collecting bone samples and grouping them that have a similar structure resembling fossils.
- B. Predicting if someone will walk to office from home based on the outside weather and the distance between the office and home.
- C. Predicting the shelf life of a cookie-based on the oven temperature where the cookie was baked.
- D. Predicting how many minutes a flight will be delayed based on weather data.

Answer: B

QUESTION 49

Which machine learning algorithm is mostly used for predicting the values of categorical variables.

- A. K-Means
- B. Logistic regression
- C. Linear regression

Answer: C

QUESTION 50

You own a service desk company and employs a team of customer service agents to provide telephone and email support to customers.

Now you are planning to develop a web chatbot to automatically answer common customer queries. What business benefit the does owner expect as a result of the web chatbot?

- A. Increase sales
- B. Reduced workload for the customer service agents
- C. Improve product reliability

Answer: B

QUESTION 51

_____ is the average of absolute differences between prediction and actual observation where all individual differences have equal weight.

[AI-900 Exam Dumps](#) **[AI-900 Exam Questions](#)** **[AI-900 PDF Dumps](#)** **[AI-900 VCE Dumps](#)**

<https://www.braindump2go.com/ai-900.html>

Select the appropriate regression performance metrics from below to complete the sentence.

- A. Coefficient of Determination (R^2)
- B. Relative Squared Error (RSE)
- C. Relative Absolute Error (RAE)
- D. Mean Absolute Error (MAE)

Answer: D

QUESTION 52

You are working as a cloud consultant for a major retail company. You are planning to create a bot from a frequently asked questions (FAQ) document. You found out that Microsoft Azure AI has many services that can help in creating a bot seamlessly.

Which azure AI service should you use?

- A. QnA Maker
- B. Language understanding
- C. Speech
- D. Text analysis

Answer: A

QUESTION 53

To complete the following sentence, select the appropriate option from the drop-down menu.

_____ is a process in which the best machine learning algorithm to use for your specific data is selected for you.

- A. Automated machine learning (AutoML)
- B. Normalization
- C. Feature engineering

Answer: A

Explanation:

AutoML is a process in which the best machine learning algorithm to use for your specific data is selected for you. AutoML tries different algorithms and tuning parameters in parallel while training a model and stops once it reaches predefined exit criteria. Generated output provides the list of used algorithms along with recommendations on the best ones to use.

Normalization is a technique used to change the values in numeric columns to bring them up to the common scale; to the values ranging between 0 and 1, without loss of information or differences in the value ranges.

Feature engineering is a process of creating new features from within provided input dataset, which can help to better represent relationships and correlations between the input data and expected outcome.

Feature engineering improves the quality and performance of the trained model and increases its predictive power.

QUESTION 54

Which two of these sources can you translate from one language into another? Each correct answer presents a complete solution. Choose the correct answers

- A. Text
- B. Speech
- C. Image
- D. Video
- E. Handwriting

Answer: AB

Explanation:

[AI-900 Exam Dumps](#) **[AI-900 Exam Questions](#)** **[AI-900 PDF Dumps](#)** **[AI-900 VCE Dumps](#)**

<https://www.braindump2go.com/ai-900.html>

Text translation translates the text documents from one language into another language.

Speech translation translates spoken audio from one language into another language.

Converting handwriting to text is an example of Optical character recognition (OCR). OCR extracts handwritten text from an image. You can use text translation with the output from OCR.

Extracting the text in an image is also an example of Optical character recognition (OCR). OCR can recognize individual shapes as letters, numerals, punctuation, and other elements of text. OCR extracts the recognizable text from an image. You can use text translation with the output from OCR.

Videos can be analyzed and the spoken audio transcribed into text with media services. You can use text translation with the output from media services.