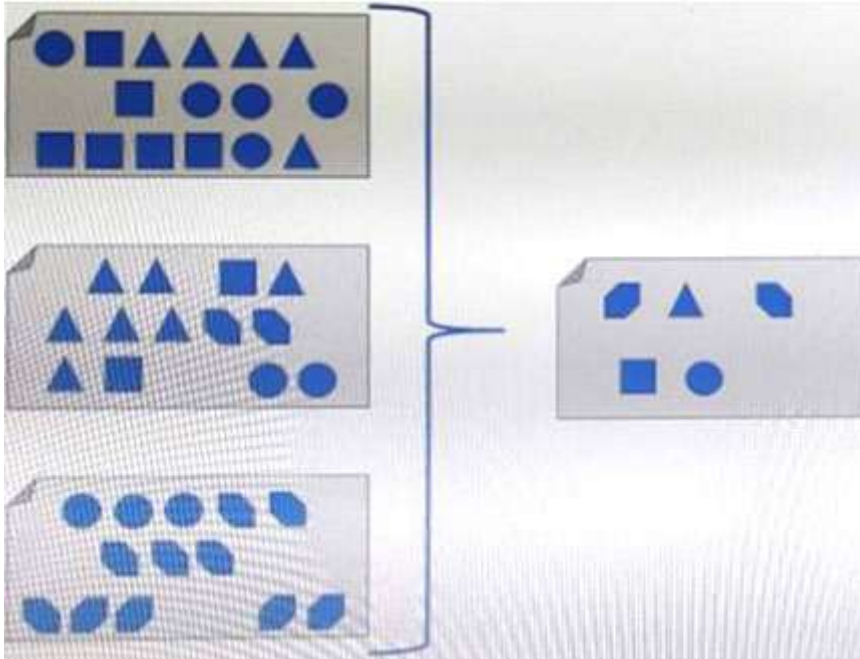


- **Vendor:** Dell-EMC
- **Exam Code:** DEA-1TT5
- **Exam Name:** Associate - Information Storage and Management Exam
- **New Updated Questions from** [Braindump2go](#)
- **(Updated in** [November/2022](#)**)**

**Visit Braindump2go and Download Full Version DEA-1TT5 Exam Dumps**

**QUESTION 235**

Refer to the Exhibit. What type of process, when performed on data, would produce the result shown?

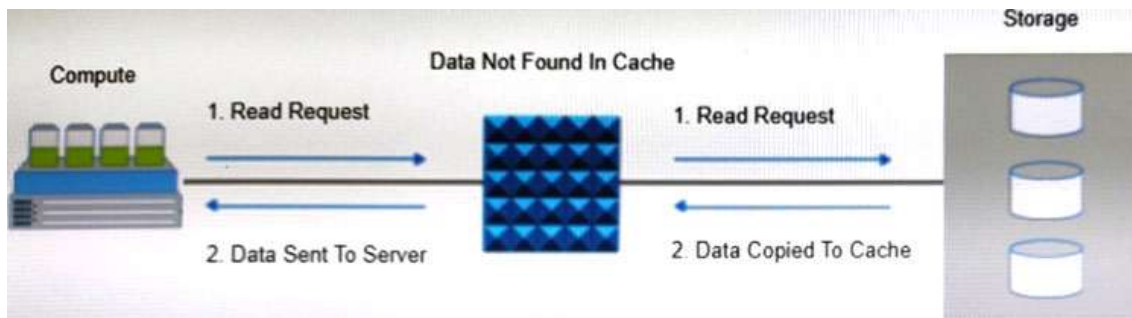


- A. Replication
- B. Deduplication
- C. Archive
- D. Migration

**Answer:** A

**QUESTION 236**

Refer to the exhibit. Which operation is represented?



- A. Write-through
- B. Read Hit
- C. Read Miss
- D. Write-back

**Answer: B**

#### **QUESTION 237**

What is an accurate description about Dell EMC VxBlock system?

- A. CI solution that combines compute, virtualization, network, software defined storage into an engineered solution.
- B. HCI solution that combines compute, virtualization, network, software- defined storage into an engineered solution.
- C. CI solution that combines compute, virtualization, network, storage into an engineered solution.
- D. HCI solution that combines compute, virtualization, network, and storage optimized for VMware VSAN

**Answer: D**

#### **QUESTION 238**

An organization wants to consume compute, network, and storage resources through self-service portal. Which cloud service model provides this capability?

- A. Software as a Service
- B. Infrastructure as a Service
- C. Platform as a Service
- D. Data as a Service

**Answer: C**

#### **QUESTION 239**

Which statement is true regarding virtual provisioning?

- A. Shared and Thin LUNS can be expanded rapidly with only minor disruptions
- B. Multiple shared storage pools can be created while each pool must be allocated to a unique thin LUN
- C. Virtual provisioning enables more efficient allocation of storage to compute systems
- D. Virtual provisioning prevents issues that arise from oversubscription

**Answer: C**

#### **QUESTION 240**

An organization is planning to secure the connection between the data center and cloud while performing data backup and replication.

**[DEA-1TT5 Exam Dumps](#) [DEA-1TT5 Exam Questions](#) [DEA-1TT5 PDF Dumps](#) [DEA-1TT5 VCE Dumps](#)**

**<https://www.braindump2go.com/dea-1tt5.html>**

Which security control mechanism will help organization to achieve the desired security?

- A. Identity and Access management
- B. Intrusion Detection and Prevention
- C. Firewall
- D. Virtual Private Network

**Answer:** A

**QUESTION 241**

Which components should be used for interconnecting hosts to storage systems in FC SANs?

- A. FC switches  
FC hubs  
FC N\_Ports
- B. FC switches  
FC directors  
FC E\_Ports
- C. FC directors  
FC hubs  
FC FL\_Ports
- D. FC switches  
FC directors  
FC FE\_Ports

**Answer:** D

**QUESTION 242**

What is a key benefit for deploying a remote data protection and recovery solution in a data center environment?

- A. Maximizes application and information availability
- B. Reduces required maintenance time for IT resources
- C. Avoids security risks that exposes the business data
- D. Reduces the cost of protecting data

**Answer:** B

**QUESTION 243**

Which type of interface connects SSD drives to the storage array controller?

- A. NVMe
- B. NVMe/IB
- C. NVMe-oF
- D. NVMe/TCP

**Answer:** D

**QUESTION 244**

What is a feature of 5G technology?

- A. Higher LAN bandwidth
- B. Higher connectivity density
- C. Higher WAN bandwidth
- D. Higher transmission distances

**Answer: C**

**QUESTION 245**

What is the lowest to highest order of I/O performance among these storage devices?

- A. SCM--> SSD --> DRAM--> SATA
- B. SATA--> SSD--> SCM --> DRAM
- C. SSD --> SCM--> SATA--> DRAM
- D. DRAM--> SCM--> SSD-> SATA

**Answer: C**

**QUESTION 246**

What is an accurate statement about governance?

- A. Creates the policies and enforces their adherence
- B. Ensures removal of data security vulnerabilities
- C. Determines strategy and operational rules by which companies are directed and managed
- D. Restricts access privileges to certain legitimate users to avoid IT managed resource conflicts

**Answer: C**

**QUESTION 247**

Which Connectrix FC switch model supports NVMe in a 32Gb/s SAN fabric exclusively?

- A. DS-6600B
- B. MDS 9148S
- C. DS-6505B
- D. MDS-9132T

**Answer: A**

**QUESTION 248**

A company's assets are continuously under attack.

To deploy a security control mechanism to protect these assets, what should be considered?

- A. Minimize the work factor
- B. Easy access to assets by authorized users
- C. Limited access to assets by unauthorized users
- D. Maximize the attack surface

**Answer: B**

**QUESTION 249**

What is a goal of cyber recovery?

- A. Evaluate systems, networks, and applications to find vulnerabilities
- B. Determine persistence access of system, networks, and applications
- C. Abstract the physical compute hardware from the operating system and applications
- D. Isolate copies of critical data to ensure that an uncompromised copy always exists

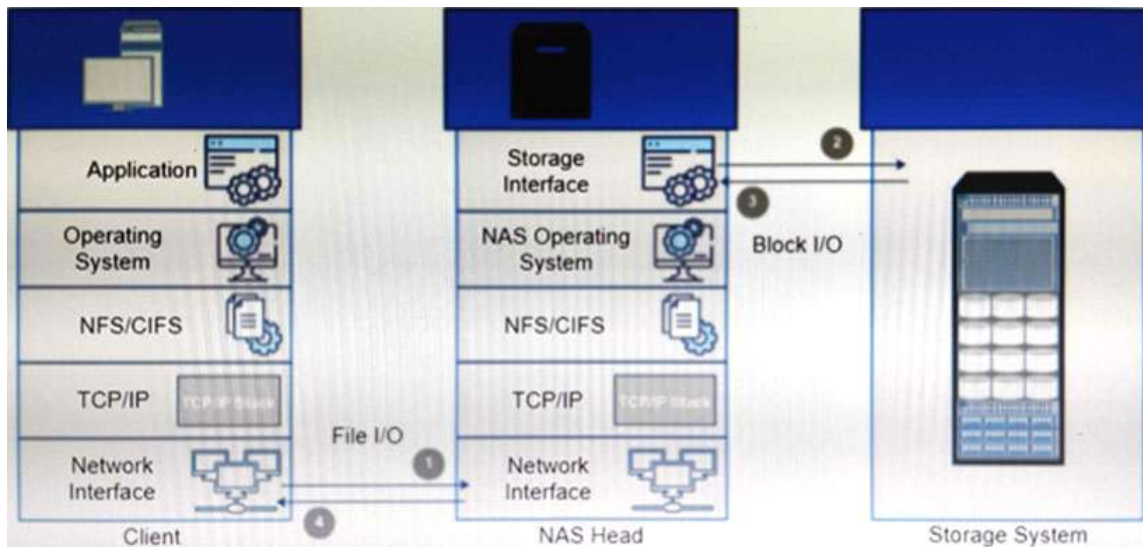
**Answer: D**

**QUESTION 250**

Refer to the exhibit. What type of NAS system(s) processes file write and read operations as described in the example?

**[DEA-1TT5 Exam Dumps](#) [DEA-1TT5 Exam Questions](#) [DEA-1TT5 PDF Dumps](#) [DEA-1TT5 VCE Dumps](#)**

**<https://www.braindump2go.com/dea-1tt5.html>**



- A. Scale-up and integrated NAS systems
- B. Scale-up NAS system only
- C. Scale -out NAS system
- D. Integrated NAS system only

**Answer: A**

#### QUESTION 251

An organization is planning to adopt pre integrated systems to deploy compute, network, storage, and management functions as a single engineered solution.

Which approach should the organization adopt?

- A. Service based approach
- B. DIY approach
- C. Vendor ready solutions
- D. DCaaS solution

**Answer: A**

#### QUESTION 252

Why is it important to automate the operations management process in a data center environment?

- A. converts CAPEX to OPEX
- B. mitigates operation management risks
- C. eliminates operational cost
- D. ensures operational agility

**Answer: B**

#### QUESTION 253

An Ethernet switch has eight ports and all ports must be operational for 24 hours from Monday through Friday.

However, a failure of Port 7 occurs as follows:

Monday=4 PM to 11 PM

Wednesday= 2 PM to 10 PM

Friday= 5 AM to 11 AM

What is the MTTR of Port 7?

- A. 36 hours

- B. 5 hours
- C. 7 hours
- D. 33 hours

**Answer: C**

**QUESTION 254**

A host sends one write /O to the RAID 1 array.  
How many writes does it take for the array to store the data?

- A. Six write 1/Os
- B. Four write I/Os
- C. Two write I/Os
- D. One write I/Os

**Answer: B**

**QUESTION 255**

A company is using an intrusion detection and prevention system (IDPS) to scan and analyze intrusion events.  
Which IDPS technique uses a database that contains known attack patterns?

- A. Intrusion-based
- B. Policy-based
- C. Anomaly. based
- D. Signature-based

**Answer: C**

**QUESTION 256**

Cloud tiering is the part of which tier?

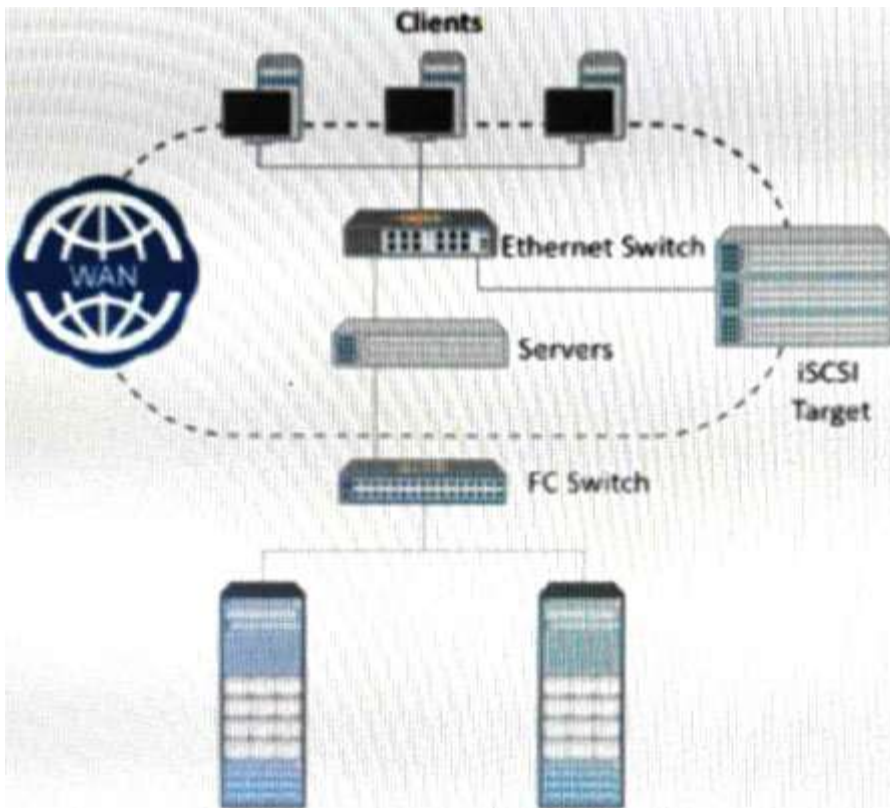
- A. Policy
- B. Secondary Storage
- C. Primary Storage
- D. Application

**Answer: D**

**QUESTION 257**

What type of network connectivity is illustrated in the image below?





- A. Compute to storage connectivity
- B. Data center to data center connectivity
- C. Storage to hybrid cloud connectivity
- D. Compute to hybrid cloud connectivity

**Answer: D**

**QUESTION 258**

What is an accurate statement about Challenge Handshake Authentication Protocol (CHAP) control?

- A. Enables initiators and targets to authenticate each other by using a shared secret code
- B. Provides strong authentication for client-server applications by using secret-key cryptography
- C. Allows a client to access protected resources from a resource server on behalf of a resource owner
- D. Enables an organization to use authentication services from an identity provider

**Answer: A**

**QUESTION 259**

An IT organization wants to deploy four FC switches for compute and storage system connectivity. To meet performance requirements, a maximum of one active ISL and redundant ISLs for their compute to storage traffic. Which FC SAN topology should be recommended?

- A. Single switch
- B. Partial mesh
- C. Multi-switch
- D. Full mesh

**Answer: C**

**QUESTION 260**

What is a purpose of the policy engine in a data archiving environment?

- A. A Facilitates manual searching for archived data in archive storage
- B. Moves the appropriate data into archive storage automatically
- C. Automates the process of identifying the data to move from archive to primary storage
- D. Enables manual migration of older archived data between archive storage devices

**Answer: A**

**QUESTION 261**

Which management monitoring parameter involves examining the amount of infrastructure resources used?

- A. Configuration
- B. Capacity
- C. Performance
- D. Availability

**Answer: A**

**QUESTION 262**

A Fibre Channel switch has eight ports and all ports must be operational from 6 AM to 6 PM, Monday through Friday. However, a failure of Port 4 occurs with the week as follows:

Monday= 11 AM to 1 PM

Wednesday= 5 PM to 10 PM

Thursday= 7 AM to 10 AM

Saturday= 11 AM to 1 PM

What is the availability of Port 4 in that week?

- A. 80%
- B. 86.7%
- C. 90%
- D. 81 6%

**Answer: B**

**QUESTION 263**

What functionality does the control layer provide in a software-defined networking architecture?

- A. Forwards data packets based on application layer requirements
- B. Defines network behavior through physical network device policies
- C. Establishes communication between the infrastructure and interface layers
- D. Extracts network information from the data plane and sends it to the application layer

**Answer: C**

**QUESTION 264**

Which plane of the SDDC architecture provides a CL and GUI for IT to administrator the infrastructure and to configure policies?

- A. Data plane
- B. Management plane
- C. Control plane
- D. Service plane



**Answer: B**

**QUESTION 265**

What is a feature a hypervisor?

- A. Isolates the physical resources of a single compute system
- B. Provides a VMM that manages all VMS on a single compute system
- C. Isolates the VMs on a single compute system
- D. Provides a VMM that manages all VMs on a clustered compute system

**Answer: A**

**QUESTION 266**

A backup administrator has defined a backup policy. The policy requires full backups to be performed at 9 PM every Sunday and incremental backups performed at 9 PM the remaining days. If files were accidentally deleted Thursday morning, how many backup copies are required to restore the files?

- A. 4
- B. 5
- C. 2
- D. 3

**Answer: C**

**QUESTION 267**

What accurately describes the scale-out storage architecture?

- A. Scales the capacity only within a single storage system.
- B. Provides a fixed capacity ceiling that limits scalability beyond a storage system.
- C. Provides the capability to maximize its capacity by adding nodes to the cluster.
- D. Restricts scalability to the limits of the storage controllers.

**Answer: C**

**QUESTION 268**

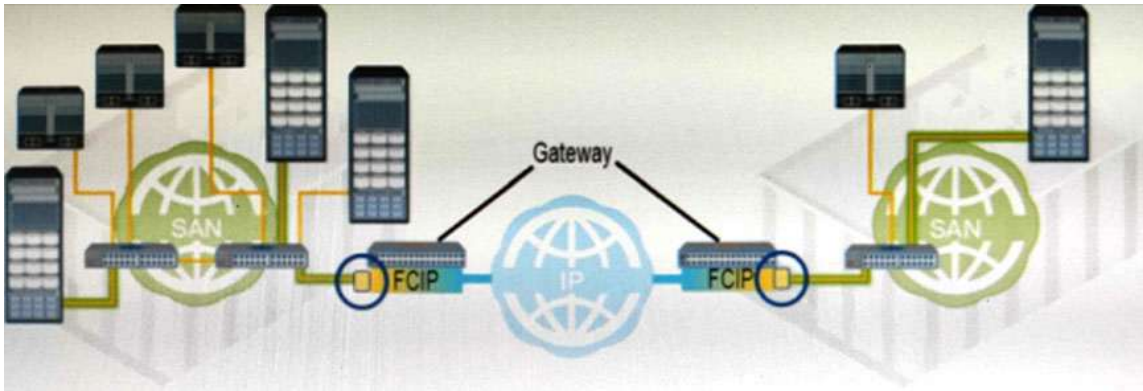
Which network performance attribute is achieved when using flow control in FCIP?

- A. IP network congestion detection and handling
- B. Eliminate IP packet fragmentation
- C. IP packet collision detection and handling
- D. In-order packet delivery

**Answer: A**

**QUESTION 269**

Refer to the Exhibit. What type of FC port connects each FCIP gateway to each FC SAN?



- A. EX\_Port
- B. VE\_Port
- C. E\_Port
- D. TE\_Port

**Answer: C**

#### QUESTION 270

Which statement describes machine learning?

- A. Organizes data efficiently so that compute systems can learn
- B. Applies an algorithm to large amounts of data for pattern discovery
- C. Developing a program to compute every possible outcome
- D. Replicating a detailed process and then implementing it in software

**Answer: D**

#### QUESTION 271

Which functionality is provided by a process login in a Fibre Channel (FC) SAN environment?

- A. Exchanges service relevant parameters between an N\_port and an N\_port
- B. Establishes a connection to the fabric between an N\_port and an F\_port
- C. Exchange ULP-related parameters between two N\_ports
- D. Establishes a session that occurs between two E\_ports

**Answer: C**

#### QUESTION 272

Which type of data protection is used to move primary data to lower cost storage and helps to enforce compliance requirements?

- A. Backup
- B. Replication
- C. Deduplication
- D. Archive

**Answer: C**

#### QUESTION 273

A user lost access to a key VM due to a hardware failure. A proxy server regularly takes PIT snapshots of the VM to protect the data.

What type of data protection method is this called?

[DEA-1TT5 Exam Dumps](#) [DEA-1TT5 Exam Questions](#) [DEA-1TT5 PDF Dumps](#) [DEA-1TT5 VCE Dumps](#)

<https://www.braindump2go.com/dea-1tt5.html>

- A. Agent-based
- B. Image-based
- C. Backup as a service
- D. Local replication

**Answer: C**

**QUESTION 274**

Why is it important for organizations to store, protect, and manage their data?

- A. To reduce the amount of data to be replicated, migrated, and backed up
- B. To develop and deploy modern applications for business improvement
- C. To eliminate complexity in managing the data center environment
- D. To meet the requirements of legal and data governance regulations

**Answer: D**

**QUESTION 275**

What is a benefit of application virtualization?

- A. Avoids conflicts between different versions of the same application
- B. Enables an application to directly access a LUN on a storage system
- C. Runs applications without requiring the use of cache memory
- D. Presents more memory to an application than is physically available

**Answer: A**

**QUESTION 276**

Which set of factors govern the overall performance of a hard disk drive?

- A. Seek time  
Rotational latency  
Bandwidth
- B. Seek time  
Rotational latency  
RAID level
- C. Seek time  
Rotational latency  
I/O operations per second
- D. Seek time  
Rotational latency  
Data transfer rate

**Answer: D**

**QUESTION 277**

What is a function of the metadata service in an OSD storage system?

- A. Generates the file system namespace from the data to be stored
- B. Manages the file system storage space for all remote clients
- C. Manages physical OSD containers on which data is stored
- D. Generates an object ID from the data to be stored

**Answer: C**

**QUESTION 278**

Which modern technology enables data to be securely collected and processed at point of creation to create new value?

- A. Big Data
- B. Edge Computing
- C. Private cloud
- D. AI/ML

**Answer: B**

**QUESTION 279**

Which uses an orchestrated approval process to assist decision making using an agile methodology?

- A. Security management
- B. Performance management
- C. Configuration management
- D. Change management

**Answer: C**

**QUESTION 280**

What is a function of a continuous data protection (CDP) appliance?

- A. Runs data protection software and manages replications within and across data centers
- B. Stores all data that has changed from the time the replication session started
- C. Migrates deduplicated data from the source volume to the target volume during replication
- D. Intercepts writes to the production volume and splits each write into two copies

**Answer: D**

**QUESTION 281**

What is a benefit of application virtualization?

- A. Avoids conflicts between different versions of the same application
- B. Enables an application to directly access a LUN on a storage system
- C. Runs applications without requiring the use of cache memory
- D. Presents more memory to an application than is physically available

**Answer: A**

**QUESTION 282**

What is the goal of a business continuity solution?

- A. Reduce the amount of investment in protecting an organization's business-related data.
- B. Avoid a disaster in a data protection environment to control the loss of data.
- C. Ensure information availability that is required to conduct vital business operations.
- D. Eliminate security threats in a data protection environment for continuous access to data.

**Answer: C**