

➤ **Vendor: Microsoft**

➤ **Exam Code: MB-500**

➤ **Exam Name: Microsoft Dynamics 365: Finance and Operations Apps Developer**

➤ **New Updated Questions from [Braindump2go](#)**

➤ **(Updated in [March/2026](#))**

[Visit Braindump2go and Download Full Version MB-500 Exam Dumps](#)

QUESTION 330

A company uses Dynamics 365 Finance.
The company requires you to create a custom service.
You need to create request and response classes for the custom service.
Which class attribute should you use?

- A.DataContract
- B. DataEventHandler
- C. DataCollection

Answer: A

Explanation:

To create request and response classes for a custom service in Dynamics 365 Finance, you need to use the DataContract attribute. This attribute is used to define the structure of the data that will be sent and received by the service, allowing for serialization and deserialization of the class during service execution. DataContract is applied to classes to define them as data contracts for services. The other options (DataEventHandler and DataCollection) are not relevant for defining request and response classes for custom services.

QUESTION 331

A company uses Dynamics 365 Finance.
System users require a default value for a table to save time entering data. The value must appear each time users create a new record, before completing other fields and saving the record. After a user saves the record, the user must receive an email that contains the data.
You need to add the appropriate events for each case.
Which two objects you should use? Each correct answer presents part of a solution.
NOTE: Each correct selection is worth one point.

- A. Extension
- B. Post handler
- C. Pre handler
- D. Delegate event

Answer: BC

Explanation:

Pre-Event Handlers and Post-Event Handlers
An event handler can reside underneath a method node can run either before or after the method runs. You can use CalledWhen property on the event handler node. The CalledWhen property has two values:

Pre - The event handler runs before the method starts.

Post - The event handler runs after the method ends.

Reference:

<https://chaituax.wordpress.com/2014/04/09/how-to-use-event-handler-in-microsoft-dynamics-ax-2012/>

QUESTION 332

Hotspot Question

A company uses Dynamics 365 Supply Chain Management.

The company must consume a third-party REST API. The API will return ItemId as the item number and InventQty as the available on-hand inventory.

You create a class that is used to retrieve the API response.

You need to add the attributes.

Which attributes should you add? To answer, select the appropriate options in the answer area.

NOTE: Each correct selection is worth one point.

Consuming RESTful APIs

```
class InventOnHandResponseContract  
{
```

```
    ItemId        itemId;  
    InventQty     onhand;
```

	▼
[DataMember]	
[DataContract]	
[DataCollection]	
[DataEventHandler]	

```
public ItemId parmItemId(ItemId itemId = itemId)
```

```
{  
    itemId = _itemId;  
    return itemId;  
}
```

	▼
[DataMember]	
[DataContract]	
[DataCollection]	
[DataEventHandler]	

```
public InventQty parmOnhand(InventQty onhand = onhand)
```

```
{  
    onhand = _onhand;  
    return onhand;  
}
```

Answer:

Consuming RESTful APIs

```
class InventOnHandResponseContract
{
```

```
    ItemId        itemId;
    InventQty     onhand;
```



```
public ItemId parmItemId(ItemId_itemId = itemId)
```

```
{
    itemId = _itemId;

    return itemId;
}
```



```
public InventQty parmOnhand(InventQty _onhand = onhand)
```

```
{
    onhand = _onhand;

    return onhand;
}
```

QUESTION 333

A company uses Dynamics 365 Finance.

The company deploys a custom table named LoyaltyCustomerTable. The table has a 1:1 relationship with a table named CustTable. Both tables contain a unique field named AccountNum and share the same data. Using event handlers, all edits to CustTable are reflected within LoyaltyCustomerTable.

The LoyaltyCustomerTable data is maintained by using the LoyaltyCustomerTable form. This form selects all data from both LoyaltyCustomerTable and CustTable and displays the records sorted by LoyaltyCustomerTable.AccountNum. LoyaltyCustomerTable was mistakenly created with no indexes. A significant delay occurs when users open the LoyaltyCustomerTable form.

You need to improve performance by creating an index.

Which method should you use?

- A. Create a foreign key relation on LoyaltyCustomerTable with Related Table set to CustTable and Index set to ReclD.
- B. Create foreign key relation on CustTable with Related Table set to LoyaltyCustomerTable and Index set to ReclD.
- C. Create an index on CustTable for AccountNum.
- D. Create a foreign key relation on LoyaltyCustomerTable with Related Table set to CustTable and Index set to AccountIdx.

Answer: A

Explanation:

Create foreign key relation between the tables.

Create the relation on LoyaltyCustomerTable as it needs the index.

Include ReclID in the index (not AccountIdx).

Note: ReclD stands for Record Identifier. It is often called RowId (row identifier). It is a unique and incremental value stored with each and every row of the table.

Table index properties

The following table describes the properties that are available for indexes on tables.

* AllowDuplicates

If you set this property to Yes, the index can be non-unique. If you don't create at least one unique index, a unique index is created by combining the first index and the ReclD.

* CreateReclDIndex

Specify whether an index on the Record ID field is created.

* Etc.

Reference:

<https://learn.microsoft.com/en-us/dynamics365/fin-ops-core/dev-itpro/dev-ref/application-explorer-aot-properties>

QUESTION 334

You add a new field in an extension to the SalesTable table in Dynamics 365 Finance.

You must test the field in the SalesTable form to ensure that you can enter data from the UI. When you open the form in the browser, you receive a SQL error.

You need to resolve the issue.

What should you do?

- A. Restart the SQL Server service.
- B. Build the solution.
- C. Restart IIS.
- D. Synchronize the database.

Answer: B

Explanation:

After adding a field to the SalesTable extension and using it in the SalesTable form extension, you must build and synchronize the database with your new changes to make the field visible and functional in the Dynamics 365 Finance environment.

1. Build Your Project

Purpose:

This compiles your code and updates the project's definition to include the new field and form changes.

Action:

In Visual Studio, right-click on your project or solution and select the "Build" option.

2. Synchronize with the Database

Purpose:

This updates the database schema to reflect the new field you added to the SalesTable extension, making the field available for use.

Action:

Go to the Dynamics 365 menu in Visual Studio.

Select "Synchronize database".

3. Verify the Field

Purpose:

To confirm that the field has been successfully added and is visible on the SalesTable form.

Action:

Navigate to the SalesTable form in the Finance and Operations client.

Confirm that your new custom field appears in the designated location on the form.

Reference:

<https://learn.microsoft.com/en-us/dynamics365/fin-ops-core/dev-itpro/extensibility/add-field-extension>

QUESTION 335

A company uses Dynamics 365 Finance.

You create a batch class for the company by using the SysOperationFramework. The data contract class contains a Boolean and a date field that are displayed in the dialog as a checkbox and date picker field, respectively.

If the checkbox is selected, the date picker field must default to today's date unless users manually select a date.

You need to implement the checkbox functionality.

In which class should you implement the functionality?

- A. Service
- B. Controller
- C. UIBuilder
- D. Contract

Answer: C

Explanation:

To achieve this behavior, you need a custom UIBuilder class associated with your SysOperation batch class. In the UIBuilder's build() method, you can add custom logic to set the date picker to today's date when the checkbox is selected and make the date field dependent on the checkbox's state.

In steps:

1. Create a UIBuilder Class: Create a class that extends SysOperationUIBuilder and associate it with your data contract class using the SysOperationContractProcessing attribute.

2. Override the build() Method: In your UIBuilder class, override the build() method.

3. Add Logic to Set Date: Inside the build() method, add code to interact with the controls on the dialog.

Get a reference to the dialog form control for the date field.

Get a reference to the dialog form control for the checkbox.

Use the addBefore or addAfter methods to add a new control or modify an existing one.

Implement logic that, when the checkbox's value changes, sets the date field to today's date if the checkbox is checked, or clears it otherwise.

Reference:

<https://download.microsoft.com/download/A/1/E/A1EC8BED-1187-4F9C-8C84-02431316F458/Introduction%20to%20the%20SysOperation%20Framework.pdf>

QUESTION 336

A company uses Dynamics 365 Finance.

The company requires more than 10 new custom fields for the SalesTable table.

You need to add the custom fields without creating an extension of the table.

What should you do?

- A. Use the SysExtensionSerializer framework.
- B. Create the new fields in the SalesTable table.
- C. Use chain of command to add the fields.

Answer: B

QUESTION 337

A company uses Dynamics 365 for its supply chain operations.

A client wants to ensure current processes do not break when the client receives Microsoft updates for Dynamics 365 finance and operations apps.

The company has no development capabilities.

You need to build the scenarios to automate the process by using the Regression suite automation tool (RSAT).

Which file type should you include to run the scenarios?

- A. Security customization

- B. Workflow export
- C. Acceptance test library (ATL)
- D. Test automation/parameter

Answer: D

Explanation:

For this question this is the correct answer:

- * Task recording XML
- * Test automation/parameter

For this question these are the incorrect answers:

- * Acceptance test library (ATL)
- * Business events schema
- * Security customization
- * SysTest framework
- * Workflow export

Explanation of correct answers:

- * Task recording XML

The Regression suite automation tool (RSAT) significantly reduces the time and cost of user acceptance testing (UAT) of finance and operations apps. UAT is typically required before you take a Microsoft application update, or before you apply custom code and configurations to your production environment. RSAT lets functional power users record business tasks by using Task recorder and then convert the recordings into a suite of automated tests, without having to write source code.

- * Test automation/parameter

The Regression Suite Automation Tool (RSAT) enables functional power users to record business tasks using the Finance and Operations task recorder and convert them into a suite of automated tests without the need to write source code. It significantly reduces the time and cost of user acceptance testing when taking a Microsoft update, or before applying custom code and configurations to your Finance and Operations production environment. RSAT is fully integrated with Azure DevOps for test execution, reporting and investigation. Test parameters are decoupled from test steps and use Microsoft Excel.

Reference:

<https://learn.microsoft.com/en-us/dynamics365/fin-ops-core/dev-itpro/perf-test/rsat/rsat-overview>

<https://www.microsoft.com/en-us/download/details.aspx?id=57357>

QUESTION 338

You are a Dynamics 365 Finance developer.

You have a table named FMVehicle that contains a field named VehicleId. The table has an index named VehicleIdIdx on the VehicleId field. You declare a table buffer named **vehicle** to refer to the table.

You need to select all records from the FMVehicle table in ascending order based on VehicleId field in the vehicle variable.

Which embedded-SQL statement should you use?

- A. `select vehicle order by VehicleIdIdx desc;`
- B. `select vehicle index VehicleId;`
- C. `select vehicle order by VehicleIdIdx asc;`
- D. `select vehicle index VehicleIdIdx;`

Answer: C

Explanation:

We must specify the table buffer named vehicle as in: `select vehicle.`

For this question these are the correct answers:

(* `select vehicle index VehicleIdIdx;`)

The 'index VehicleIdIdx' statement will cause an Order By Asc of the fields contained in the index. In this case, that means an Order By Asc of the VehicleID field.

* `select vehicle order by vehicleIdIdx asc;`

We order on the index field VehicleIdIdx.

(*`select vehicle order by VehicleId;`)

For this question these are the incorrect answers:

* `select vehicle index VehicleId;`

Must specify the index, not VehicleId.

(* select vehicle order by VehicleId;)

* select vehicle order by VehicleId desc;

Not use desc.

* select vehicle order by VehicleIdIx desc;

Not use desc.

* select vehicle index VehicleId;

VehicleId is not an index.

* select VehicleId from vehicle order by VehicleId asc;

We must specify the table buffer named vehicle (not select VehicleId).

* select VehicleId from vehicle order by VehicleIdIx asc;

We must specify the table buffer named vehicle (not select VehicleId).

Note: You use the order by keyword in select statements to order the data that is returned. Use the index hint keyword to specify the index that should be used in the query, and to sort the selected records in the manner that is defined by the index. Indexes optimize the selection of records. To select records in a specific order, combine the index hint keyword with an order by expression. If you want the output to be sorted in reverse order, use the reverse keyword.

Reference:

<https://docs.microsoft.com/en-us/dynamics365/fin-ops-core/dev-itpro/dev-ref/xpp-data-query>

QUESTION 339

A company uses Dynamics 365 for its supply chain operations.

A client wants to ensure current processes do not break when the client receives Microsoft updates for Dynamics 365 finance and operations apps.

The company has no development capabilities.

You need to build the scenarios to automate the process by using the Regression suite automation tool (RSAT).

Which file type should you include to run the scenarios?

- A. Business events schema
- B. SysTest framework
- C. Task recording XML
- D. Workflow export

Answer: C

Explanation:

For this question this is the correct answer:

* Task recording XML

* Test automation/parameter

For this question these are the incorrect answers:

* Acceptance test library (ATL)

* Business events schema

* Security customization

* SysTest framework

* Workflow export

Explanation of correct answers:

* Task recording XML

The Regression suite automation tool (RSAT) significantly reduces the time and cost of user acceptance testing (UAT) of finance and operations apps. UAT is typically required before you take a Microsoft application update, or before you apply custom code and configurations to your production environment. RSAT lets functional power users record business tasks by using Task recorder and then convert the recordings into a suite of automated tests, without having to write source code.

* Test automation/parameter

The Regression Suite Automation Tool (RSAT) enables functional power users to record business tasks using the Finance and Operations task recorder and convert them into a suite of automated tests without the need to write source code. It significantly reduces the time and cost of user acceptance testing when taking a Microsoft update, or before applying custom code and configurations to your Finance and Operations production environment. RSAT is fully integrated with Azure DevOps for test execution, reporting and investigation. Test parameters are decoupled from test steps and use Microsoft Excel.

Reference:

<https://learn.microsoft.com/en-us/dynamics365/fin-ops-core/dev-itpro/perf-test/rsat/rsat-overview>

<https://www.microsoft.com/en-us/download/details.aspx?id=57357>

QUESTION 340

Drag and Drop Question

A company uses Dynamics 365 finance and operations apps.

The company must ensure employees use best practices when performing data validation and functional, regression, and user acceptance testing in the finance and operations apps.

You need to select the correct testing framework or functionality.

Which testing framework or functionality should you use in each scenario? To answer, drag the appropriate testing frameworks or functionalities to the correct scenarios. Each testing framework or functionality may be used once, more than once, or not at all. You may need to drag the split bar between panes or scroll to view content.

NOTE: Each correct selection is worth one point.

Testing framework or functionalities	Answer Area	Testing framework or functionality
Task recorder	<p>Scenario</p> <p>Run a suite of tests to reduce user acceptance testing cost and time.</p> <p>Document steps a user performs in an application for testing purposes.</p> <p>Create consistent test data using structured, readable code.</p> <p>Allow for continuous validation of code changes in a development environment.</p>	
SysTest framework		
Acceptance test library (ATL)		
Regression suite automation tool (RSAT)		

Answer:

Testing framework or functionalities	Answer Area	Testing framework or functionality
	<p>Scenario</p> <p>Run a suite of tests to reduce user acceptance testing cost and time.</p> <p>Document steps a user performs in an application for testing purposes.</p> <p>Create consistent test data using structured, readable code.</p> <p>Allow for continuous validation of code changes in a development environment.</p>	Regression suite automation tool (RSAT)
		Task recorder
		Acceptance test library (ATL)
		SysTest framework

QUESTION 341

A company uses Dynamics 365 Supply Chain Management.

You are performing a review of the code that returns the total sum of transactions for all customers in customer group 10. You observe that the following query takes a long time to complete.

```

AmountMST sumTrans = 0;
while select custTrans
{
    select custTable
    where custTable.AccountNum == custTrans.AccountNum;
    if(custTable.custGroup == '1')
        sumTrans = sumTrans + custTrans.AmountMst;
}

```

You need to modify the query to optimize performance.

Which code segment should you use?

- A. `Select sum(AmountMst) from custTrans join custId, custGroup from custTable where custTable.AccountNum == custTrans.AccountNum && custTable.custGroup == '10';`
- B. `AmountMST sumTrans = 0; while select AmountMst from custTrans join custTable where custTable.AccountNum == custTrans.AccountNum && custTable.custGroup == '10' { sumTrans = sumTrans + custTrans.AmountMst; }`
- C. `select sum(AmountMst) from custTrans join custTable where custTable.AccountNum == custTrans.AccountNum && custTable.custGroup == '10';`
- D. `select sum(AmountMst) from custTrans exists join custTable where custTable.AccountNum == custTrans.AccountNum && custTable.custGroup == '10';`

Answer: A

Explanation:

Use a JOIN, and move custTable.custGroup == '10' into a WHERE statement.

QUESTION 342

A company uses Dynamics 365 for its supply chain operations.

A client wants to ensure current processes do not break when the client receives Microsoft updates for Dynamics 365 finance and operations apps.

The company has no development capabilities.

You need to build the scenarios to automate the process by using the Regression suite automation tool (RSAT).

Which file type should you include to run the scenarios?

- A. Business events schema
- B. Security customization
- C. Test automation/parameter
- D. SysTest framework

Answer: C

Explanation:

For this question this is the correct answer:

- * Task recording XML
- * Test automation/parameter

For this question these are the incorrect answers:

- * Acceptance test library (ATL)
- * Business events schema
- * Security customization
- * SysTest framework
- * Workflow export

Explanation of correct answers:

- * Task recording XML

The Regression suite automation tool (RSAT) significantly reduces the time and cost of user acceptance testing (UAT) of finance and operations apps. UAT is typically required before you take a Microsoft application update, or before you apply custom code and configurations to your production environment. RSAT lets functional power users record business tasks by using Task recorder and then convert the recordings into a suite of automated tests, without having to write source code.

- * Test automation/parameter

The Regression Suite Automation Tool (RSAT) enables functional power users to record business tasks using the Finance and Operations task recorder and convert them into a suite of automated tests without the need to write source code. It significantly reduces the time and cost of user acceptance testing when taking a Microsoft update, or before applying custom code and configurations to your Finance and Operations production environment. RSAT is fully integrated with Azure DevOps for test execution, reporting and investigation. Test parameters are decoupled from test steps and use Microsoft Excel.

Note:

The Regression suite automation tool (RSAT) significantly reduces the time and cost of user acceptance testing (UAT) of finance and operations apps. UAT is typically required before you take a Microsoft application update, or before you apply custom code and configurations to your production environment. RSAT lets functional power users record business tasks by using Task recorder and then convert the recordings into a suite of automated tests, without having to write source code.

Reference:

- <https://learn.microsoft.com/en-us/dynamics365/fin-ops-core/dev-itpro/perf-test/rsat/rsat-overview>
- <https://www.microsoft.com/en-us/download/details.aspx?id=57357>

QUESTION 343

You use Dynamics 365 Finance.

You loop through a list of vendor records filtered by the vendor group number. You want to store the vendor account number in a container that will be used later.

You need to save the ID in a container.

Which code segment should you use?

- A. VendTable vendTable;
container vendorAccounts;
int currentPosition = 0;
- ```
while select vendTable
 where vendTable.VendGroup == '10'
{
 vendorAccounts = conIns(vendorAccounts, currentPosition, vendTable.AccountNum);

 currentPosition++;
}
```
- B. VendTable vendTable;  
container vendorAccounts;  
int currentPosition = 1;
- ```
while select vendTable
  where vendTable.VendGroup == '10'
{
  conIns(vendorAccounts, currentPosition, vendTable.AccountNum);

  currentPosition++;
}
```
- C. VendTable vendTable;
container vendorAccounts;
int currentPosition = 1;
- ```
while select vendTable
 where vendTable.VendGroup == '10'
{
 vendorAccounts = conIns(vendorAccounts, currentPosition, vendTable.AccountNum);

 currentPosition++;
}
```
- D. VendTable vendTable;  
container vendorAccounts;  
int currentPosition = 1;
- ```
while select vendTable
  where vendTable.VendGroup == '10'
{
  vendorAccounts = conIns(vendorAccounts, currentPosition, vendTable.AccountNum);
}
```

```
E. VendTable vendTable;
   container vendorAccounts;
   int currentPosition = 1;

while select vendTable
   where vendTable.VendGroup == '10'
{
   vendorAccounts = conPeek(vendorAccounts, currentPosition, vendTable.AccountNum);

   currentPosition++;
}
```

Answer: C

Explanation:

The first element of the container is specified by the number 1. Use CurrentPosition = 1.

Use conIns, not conPeek.

conIns returns a value so use VendorAccount = conIns..

Use currentPosition++ in the loop.

Incorrect:

Not A: The first element of the container is specified by the number, not 0.

Not B: conIns return value is a new container that contains the inserted elements.

Not D: No currentPosition++ in the loop

Not E: Use conIns, not conPeek.

conPeek

Retrieves a specific element from a container and converts it into another data type, if conversion is required.

Note: conIns, conPeek

X++ container runtime functions

These functions manipulate the contents of containers.

* conIns

Inserts one or more elements into a container.

Return value

A new container that contains the inserted elements.

Remarks

The first element of the container is specified by the number 1. To insert after the n element, the start parameter should be n+1. You can also use the += operator to add values of any type to a container. For example, to create a container that contains the squared values of the first 10 loop iterations, use the following code.

```
int i;
container c;
for (i = 1; i <= 10; i++)
{
   c += i*i;
}
```

Syntax

container conIns (container container, int start, anytype element, ...)

static void conInsExample(Args _arg)

```
{
   container c;
   int i;
   c = conIns(c,1,"item1");
   c = conIns(c,2,"item2");
   for (i = 1 ; i <= conLen(c) ; i++)
   {
      // Prints the content of a container.
      print conPeek(c, i);
   }
}
```

Reference:

<https://learn.microsoft.com/en-us/dynamics365/fin-ops-core/dev-itpro/dev-ref/xpp-container-run-time-functions>
<https://learn.microsoft.com/en-us/dynamics365/fin-ops-core/dev-itpro/dev-ref/xpp-data/xpp-while-select>

QUESTION 344

A company uses Dynamics 365 finance and operations apps.

A customer wants to ensure future customizations or application upgrades do not interfere with or interrupt business process steps. The customer must document the business process steps a user performs in the user interface.

You need to select the options for exporting a task recording for testing.

Which three options could you select? Each correct answer presents a complete solution.

NOTE: Each correct selection is worth one point.

- A. Generate Test Execution files only
- B. Save as developer recording
- C. Export as Word document
- D. Save to Lifecycle Services
- E. Create derived test case

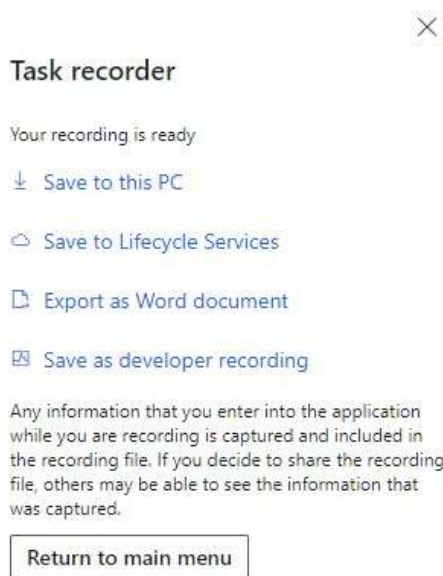
Answer: BCD

Explanation:

Development and administration for finance and operations apps, Task recorder resources

Options after a recording is completed

After you click Stop to end your recording session, several options are shown so that you can save the files that are related to the completed recording. Select Save to this PC, and save the task recording package to your desktop. You will use this file later.



B: Save as developer recording

The raw recording file (developer recording) is useful for developer scenarios, such as test code generation and scenarios where RSAT is used.

C: Export as Word document

The Microsoft Word document for your recording contains the recorded steps as well as any screenshots that were captured.

D: Save to Lifecycle Services (LCS)

When you save your recording to an LCS library, it's published on the specified business process in a BPM library. If the selected LCS library is set as a Help library, you will be able to find the task guide for the recording by searching the Help menu.

Note

To be able to save a recording to an LCS library, the user must be in the Microsoft Entra tenant that the environment was deployed from.

Reference:

<https://learn.microsoft.com/en-us/dynamics365/fin-ops-core/dev-itpro/user-interface/task-recorder>

QUESTION 345

Note: This question is part of a series of questions that present the same scenario. Each question in the series contains a unique solution that might meet the stated goals. Some question sets might have more than one correct solution, while others might not have a correct solution.

After you answer a question in this section, you will NOT be able to return to it. As a result, these questions will not appear in the review screen.

A company is using a Dynamics 365 finance and operations app.

The accounting department requests two custom fields named CusStatus and CusDiscount for the header of the sales invoice SSRS report. The custom fields are in the SalesTable table.

You create a duplicate of the report design and add the two new fields to a temporary table by using the following extension:

```
01 [ExtensionOf(classStr(SalesInvoiceDP))]
02 final class MySalesInvoiceDP_Extension
03 {
04     protected void populateSalesInvoiceHeaderFooterTmp(CustInvoiceJour _custInvoiceJour, CompanyInfo
    _companyInfo)
05     {
06
07         next populateSalesInvoiceHeaderFooterTmp(_custInvoiceJour, _companyInfo);
08
09     }
10 }
```

You need to populate the new fields by using Chain of Command (CoC).

Solution: Declare the SalesTable table on line 06 and insert a new line after line 06 to declare the SalesInvoiceHeaderFooterTmp table. Populate the new fields by using the custInvoiceJour parameter with a reference to SalesTable.

Does the solution meet the goal?

- A. Yes
- B. No

Answer: B

Explanation:

Correct:

* Declare the SalesTable table on line 06 and insert a new line after line 06 to declare the SalesInvoiceHeaderFooterTmp table. Populate the new fields by calling the method populateSalesInvoiceHeaderFooterTmp on line 08.

With Chain of Command (CoC) there is no need to create another method. Use the declared method populateSalesInvoiceHeaderFooterTmp recursively.

Incorrect:

* Create a new method on the MySalesInvoiceDP_Extension class named populateInvoiceHeaderFooterCustom which uses the CustInvoiceJour table as a parameter. Declare the SalesTable and SalesInvoiceHeaderFooterTmp tables on the new method. Populate the new fields by using the _custInvoiceJour parameter to reference SalesTable.

* Create a new method on the MySalesInvoiceDP_Extension class named populateInvoiceHeaderFooterCustom which uses the CustInvoiceJour table as a parameter. Declare the SalesTable and SalesInvoiceHeaderFooterTmp tables on the new method on line 07. Populate the new fields by using the _custInvoiceJour parameter to reference SalesTable. Call the new method on the populateSalesInvoiceHeaderFooterTmp method on line 08.

* Declare the SalesTable table on line 06 and insert a new line after line 06 to declare the SalesInvoiceHeaderFooterTmp table. Populate the new fields by using the custInvoiceJour parameter with a reference to SalesTable.

Note: Class extension - Method wrapping and Chain of Command

The functionality for class extension, or class augmentation, has been improved. You can now wrap logic around methods that are defined in the base class that you're augmenting. You can extend the logic of public and protected methods without having to use event handlers. When you wrap a method, you can also access public and protected methods, and variables of the base class. In this way, you can start transactions and easily manage state variables that are associated with your class.

For example, a model contains the following code.

```
class BusinessLogic1
{
    str doSomething(int arg)
    {
        // ...
    }
}
```

You can now augment the functionality of the doSomething method inside an extension class by reusing the same method name. An extension class must belong to a package that references the model where the augmented class is defined.

```
[ExtensionOf(classStr(BusinessLogic1))]
final class BusinessLogic1_Extension
{
    str doSomething(int arg)
    {
        // Part 1
        var s = next doSomething(arg + 4);
        // Part 2
        return s;
    }
}
```

In this example, the wrapper around doSomething and the required use of the next keyword create a Chain of Command (CoC) for the method. CoC is a design pattern where a request is handled by a series of receivers. The pattern supports loose coupling of the sender and the receivers.

Reference:

<https://learn.microsoft.com/en-us/dynamics365/fin-ops-core/dev-itpro/extensibility/method-wrapping-coc>

QUESTION 346

Note: This question is part of a series of questions that present the same scenario. Each question in the series contains a unique solution that might meet the stated goals. Some question sets might have more than one correct solution, while others might not have a correct solution.

After you answer a question in this section, you will NOT be able to return to it. As a result, these questions will not appear in the review screen.

A company is using a Dynamics 365 finance and operations app.

The accounting department requests two custom fields named CusStatus and CusDiscount for the header of the sales invoice SSRS report. The custom fields are in the SalesTable table.

You create a duplicate of the report design and add the two new fields to a temporary table by using the following extension:

```
01 [ExtensionOf(classStr(SalesInvoiceDP))]
02 final class MySalesInvoiceDP_Extension
03 {
04     protected void populateSalesInvoiceHeaderFooterTmp(CustInvoiceJour _custInvoiceJour, CompanyInfo
05     _companyInfo)
06     {
07         next populateSalesInvoiceHeaderFooterTmp(_custInvoiceJour, _companyInfo);
08     }
09 }
10 }
```

You need to populate the new fields by using Chain of Command (CoC).

Solution: Create a new method on the MySalesInvoiceDP_Extension class named populateInvoiceHeaderFooterCustom which uses the CustInvoiceJour table as a parameter. Declare the SalesTable and SalesInvoiceHeaderFooterTmp tables on the new method. Populate the new fields by using the _custInvoiceJour parameter to reference SalesTable.

Does the solution meet the goal?

- A. Yes
- B. No

Answer: B

Explanation:

Correct:

* Declare the SalesTable table on line 06 and insert a new line after line 06 to declare the SalesInvoiceHeaderFooterTmp table. Populate the new fields by using the custInvoiceJour parameter with a reference to SalesTable.

With Chain of Command (CoC) there is no need to create another method.

Incorrect:

* Create a new method on the MySalesInvoiceDP_Extension class named populateInvoiceHeaderFooterCustom which uses the CustInvoiceJour table as a parameter. Declare the SalesTable and SalesInvoiceHeaderFooterTmp tables on the new method. Populate the new fields by using the _custInvoiceJour parameter to reference SalesTable.

* Create a new method on the MySalesInvoiceDP_Extension class named populateInvoiceHeaderFooterCustom which uses the CustInvoiceJour table as a parameter. Declare the SalesTable and SalesInvoiceHeaderFooterTmp tables on the new method on line 07. Populate the new fields by using the _custInvoiceJour parameter to reference SalesTable. Call the new method on the populateSalesInvoiceHeaderFooterTmp method on line 08.

Note: Class extension - Method wrapping and Chain of Command

The functionality for class extension, or class augmentation, has been improved. You can now wrap logic around methods that are defined in the base class that you're augmenting. You can extend the logic of public and protected methods without having to use event handlers. When you wrap a method, you can also access public and protected methods, and variables of the base class. In this way, you can start transactions and easily manage state variables that are associated with your class.

For example, a model contains the following code.

```
class BusinessLogic1
{
    str doSomething(int arg)
    {
        // ...
    }
}
```

You can now augment the functionality of the doSomething method inside an extension class by reusing the same method name. An extension class must belong to a package that references the model where the augmented class is defined.

```
[ExtensionOf(classStr(BusinessLogic1))]
final class BusinessLogic1_Extension
{
    str doSomething(int arg)
    {
        // Part 1
        var s = next doSomething(arg + 4);
        // Part 2
        return s;
    }
}
```

In this example, the wrapper around doSomething and the required use of the next keyword create a Chain of Command (CoC) for the method. CoC is a design pattern where a request is handled by a series of receivers. The pattern supports loose coupling of the sender and the receivers.

Reference:

<https://learn.microsoft.com/en-us/dynamics365/fin-ops-core/dev-itpro/extensibility/method-wrapping-coc>

QUESTION 347

Note: This question is part of a series of questions that present the same scenario. Each question in the series contains a unique solution that might meet the stated goals. Some question sets might have more than one correct solution, while others might not have a correct solution.

After you answer a question in this section, you will NOT be able to return to it. As a result, these questions will not appear in the review screen.

A company is using a Dynamics 365 finance and operations app.

The accounting department requests two custom fields named CusStatus and CusDiscount for the header of the sales invoice SSRS report. The custom fields are in the SalesTable table.

You create a duplicate of the report design and add the two new fields to a temporary table by using the following extension:

```
01 [ExtensionOf(classStr(SalesInvoiceDP))]  
02 final class MySalesInvoiceDP_Extension  
03 {  
04     protected void populateSalesInvoiceHeaderFooterTmp(CustInvoiceJour _custInvoiceJour, CompanyInfo  
_companyInfo)  
05     {  
06  
07         next populateSalesInvoiceHeaderFooterTmp(_custInvoiceJour, _companyInfo);  
08  
09     }  
10 }
```

You need to populate the new fields by using Chain of Command (CoC).

Solution: Create a new method on the MySalesInvoiceDP_Extension class named populateInvoiceHeaderFooterCustom which uses the CustInvoiceJour table as a parameter. Declare the SalesTable and SalesInvoiceHeaderFooterTmp tables on the new method on line 07. Populate the new fields by using the _custInvoiceJour parameter to reference SalesTable. Call the new method on the populateSalesInvoiceHeaderFooterTmp method on line 08.

Does the solution meet the goal?

- A. Yes
- B. No

Answer: B

Explanation:

Correct:

* Declare the SalesTable table on line 06 and insert a new line after line 06 to declare the SalesInvoiceHeaderFooterTmp table. Populate the new fields by using the custInvoiceJour parameter with a reference to SalesTable.

With Chain of Command (CoC) there is no need to create another method.

Incorrect:

* Create a new method on the MySalesInvoiceDP_Extension class named populateInvoiceHeaderFooterCustom which uses the CustInvoiceJour table as a parameter. Declare the SalesTable and SalesInvoiceHeaderFooterTmp tables on the new method. Populate the new fields by using the _custInvoiceJour parameter to reference SalesTable.

* Create a new method on the MySalesInvoiceDP_Extension class named populateInvoiceHeaderFooterCustom which uses the CustInvoiceJour table as a parameter. Declare the SalesTable and SalesInvoiceHeaderFooterTmp tables on the new method on line 07. Populate the new fields by using the _custInvoiceJour parameter to reference SalesTable. Call the new method on the populateSalesInvoiceHeaderFooterTmp method on line 08.

Note: Class extension - Method wrapping and Chain of Command

The functionality for class extension, or class augmentation, has been improved. You can now wrap logic around methods that are defined in the base class that you're augmenting. You can extend the logic of public and protected methods without having to use event handlers. When you wrap a method, you can also access public and protected methods, and variables of the base class. In this way, you can start transactions and easily manage state variables that are associated with your class.

For example, a model contains the following code.

```
class BusinessLogic1  
{  
    str doSomething(int arg)  
    {  
        // ...  
    }  
}
```

You can now augment the functionality of the doSomething method inside an extension class by reusing the same method name. An extension class must belong to a package that references the model where the augmented class is defined.

```
[ExtensionOf(classStr(BusinessLogic1))]  
final class BusinessLogic1_Extension  
{  
    str doSomething(int arg)  
    {  
        // Part 1
```

```
var s = next doSomething(arg + 4);  
// Part 2  
return s;  
}  
}
```

In this example, the wrapper around doSomething and the required use of the next keyword create a Chain of Command (CoC) for the method. CoC is a design pattern where a request is handled by a series of receivers. The pattern supports loose coupling of the sender and the receivers.

Reference:

<https://learn.microsoft.com/en-us/dynamics365/fin-ops-core/dev-itpro/extensibility/method-wrapping-coc>

QUESTION 348

Note: This question is part of a series of questions that present the same scenario. Each question in the series contains a unique solution that might meet the stated goals. Some question sets might have more than one correct solution, while others might not have a correct solution.

After you answer a question in this section, you will NOT be able to return to it. As a result, these questions will not appear in the review screen.

A company is using a Dynamics 365 finance and operations app.

The accounting department requests two custom fields named CusStatus and CusDiscount for the header of the sales invoice SSRS report. The custom fields are in the SalesTable table.

You create a duplicate of the report design and add the two new fields to a temporary table by using the following extension:

```
01 [ExtensionOf(classStr(SalesInvoiceDP))]  
02 final class MySalesInvoiceDP_Extension  
03 {  
04     protected void populateSalesInvoiceHeaderFooterTmp(CustInvoiceJour _custInvoiceJour, CompanyInfo  
_companyInfo)  
05     {  
06  
07         next populateSalesInvoiceHeaderFooterTmp(_custInvoiceJour, _companyInfo);  
08  
09     }  
10 }
```

You need to populate the new fields by using Chain of Command (CoC).

Solution: Declare the SalesTable table on line 06 and insert a new line after line 06 to declare the SalesInvoiceHeaderFooterTmp table. Populate the new fields by calling the method populateSalesInvoiceHeaderFooterTmp on line 08.

Does the solution meet the goal?

- A. Yes
- B. No

Answer: A

Explanation:

Correct:

* Declare the SalesTable table on line 06 and insert a new line after line 06 to declare the SalesInvoiceHeaderFooterTmp table. Populate the new fields by calling the method populateSalesInvoiceHeaderFooterTmp on line 08.

With Chain of Command (CoC) there is no need to create another method. Use the declared method populateSalesInvoiceHeaderFooterTmp recursively.

Incorrect:

* Create a new method on the MySalesInvoiceDP_Extension class named populateInvoiceHeaderFooterCustom which uses the CustInvoiceJour table as a parameter. Declare the SalesTable and SalesInvoiceHeaderFooterTmp tables on the new method. Populate the new fields by using the _custInvoiceJour parameter to reference SalesTable.

* Create a new method on the MySalesInvoiceDP_Extension class named populateInvoiceHeaderFooterCustom which uses the CustInvoiceJour table as a parameter. Declare the SalesTable and SalesInvoiceHeaderFooterTmp tables on the new method on line 07. Populate the new fields by using the _custInvoiceJour parameter to reference SalesTable. Call the new method on the populateSalesInvoiceHeaderFooterTmp method on line 08.

* Declare the SalesTable table on line 06 and insert a new line after line 06 to declare the SalesInvoiceHeaderFooterTmp table. Populate the new fields by using the custInvoiceJour parameter with a reference

to SalesTable.

Note: Class extension - Method wrapping and Chain of Command

The functionality for class extension, or class augmentation, has been improved. You can now wrap logic around methods that are defined in the base class that you're augmenting. You can extend the logic of public and protected methods without having to use event handlers. When you wrap a method, you can also access public and protected methods, and variables of the base class. In this way, you can start transactions and easily manage state variables that are associated with your class.

For example, a model contains the following code.

```
class BusinessLogic1
{
    str doSomething(int arg)
    {
        // ...
    }
}
```

You can now augment the functionality of the doSomething method inside an extension class by reusing the same method name. An extension class must belong to a package that references the model where the augmented class is defined.

```
[ExtensionOf(classStr(BusinessLogic1))]
final class BusinessLogic1_Extension
{
    str doSomething(int arg)
    {
        // Part 1
        var s = next doSomething(arg + 4);
        // Part 2
        return s;
    }
}
```

In this example, the wrapper around doSomething and the required use of the next keyword create a Chain of Command (CoC) for the method. CoC is a design pattern where a request is handled by a series of receivers. The pattern supports loose coupling of the sender and the receivers.

Reference:

<https://learn.microsoft.com/en-us/dynamics365/fin-ops-core/dev-itpro/extensibility/method-wrapping-coc>

QUESTION 349

Drag and Drop Question

A company uses Dynamics 365 Finance.

The company requires a new custom service to allow transactional data to be attributed to a customer's order.

You need to create the custom service.

In which order should you perform the actions? To answer, move all actions from the list of actions to the answer area and arrange them in the correct order.

Custom service creation steps

- Create and assign the service group.
- Create and assign the service object.
- Create request and response classes.
- Create a service class.

Answer Area

Answer:

Custom service creation steps

Answer Area

Create request and response classes.
Create a service class.
Create and assign the service object.
Create and assign the service group.

QUESTION 350

A company uses Dynamics 365 Finance.

Developers receive an error in an existing solution. The solution must be debugged to identify the root cause of the error.

You need to enable debugging in Visual Studio to hit an existing breakpoint with the solution open.

Which three methods can you use? Each correct answer presents a complete solution. (Choose three.)

NOTE: Each correct selection is worth one point.

- A. Press F5.
- B. Using Visual Studio to debug, attach the debugger to the devenv.exe process.
- C. Using Visual Studio to debug, start debugging with your start-up object.
- D. Using Visual Studio to debug, attach the debugger to the IIS process.
- E. Using Visual Studio to debug, attach the debugger to the X++ compiler process.

Answer: ADE

Explanation:

A: Set a hit count condition

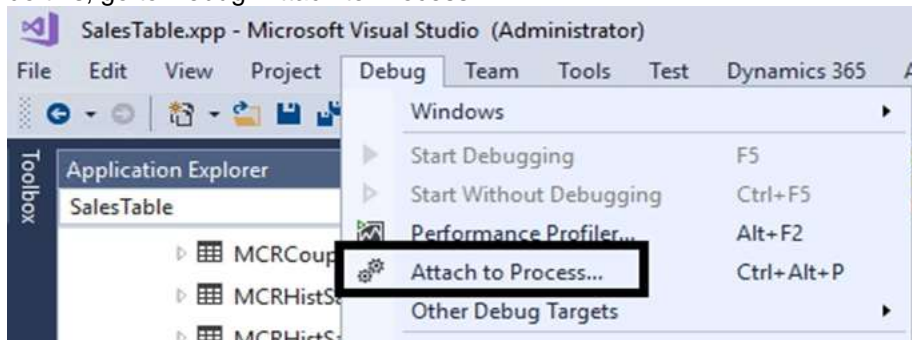
If you suspect that a loop in your code starts misbehaving after a certain number of iterations, you can set a breakpoint to stop execution after that number of hits, rather than having to repeatedly press F5 to reach that iteration.

E: X++ is used in Dynamics 365 Finance

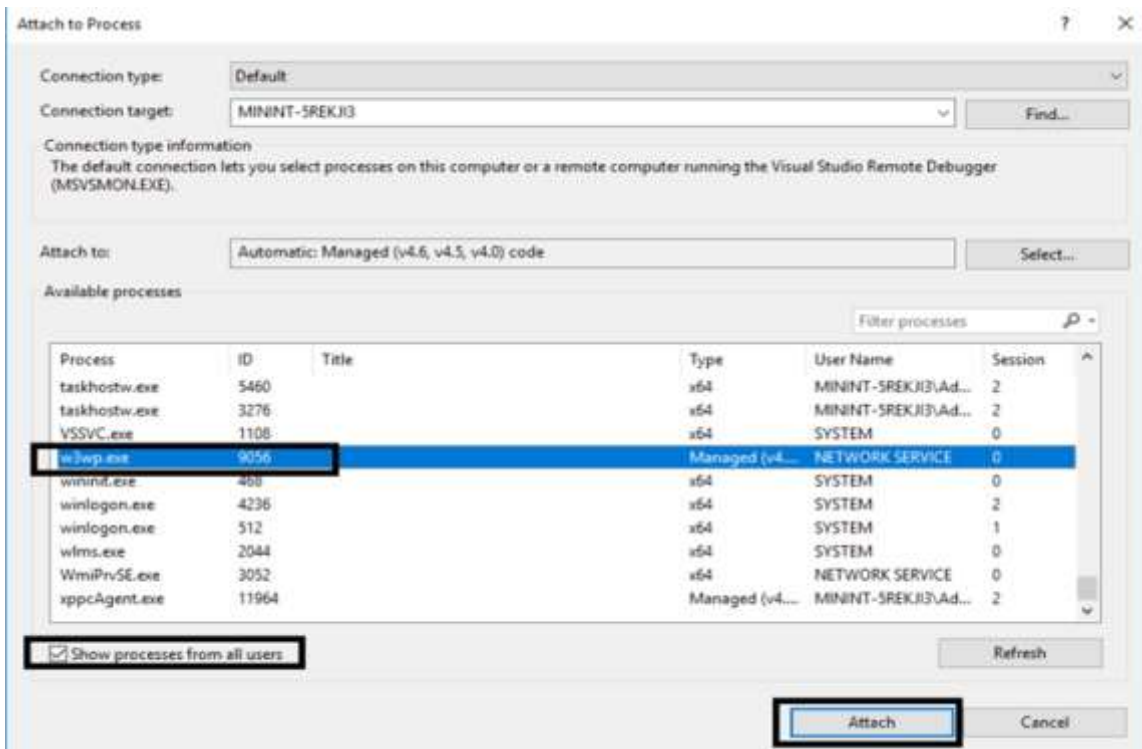
D: Use Visual Studio To Debug D365

Attach To Process

Attach to process. To debug D365 we need to attach to the existing process that is already running on the machine. To do this, go to Debug>Attach to Process.



Select the process. In the dialog that opens up, select Show processes from all users. Then select either 'w3wp.exe' or 'iisexpress.exe'.



Note: Microsoft Dynamics 365 for Finance and Operations runs as a website, hosted in IIS (Internet Information Services).

Reference:

<https://learn.microsoft.com/en-us/visualstudio/debugger/using-breakpoint>

<https://www.cnblogs.com/lingdanglfw/p/15591092.html>

QUESTION 351

A company uses Dynamics 365 Finance.

The company requires you to develop a new batch processing feature.

You need to implement the code by using the SysOperation framework.

Which three methods are already implemented by using this framework? Each correct answer presents part of the solution.

NOTE: Each correct selection is worth one point.

- A. main
- B. unpack
- C. new
- D. run
- E. pack

Answer: ABE

Explanation:

The SysOperation framework in Dynamics 365 Finance is used for batch processing and is designed to handle long-running operations in the background. The following methods are commonly used or are part of this framework:
 main: This method is often used as an entry point for executing a batch job. It initializes the process and calls other framework methods to handle the operation.

unpack: This method is used to unpack or deserialize data from a packed state, which is essential when passing complex data structures between different stages of the batch process.

pack: This method is used to serialize the current state of the class, so it can be stored and passed between processes or saved for later use, such as when a batch job runs in the background.

QUESTION 352

You create a method that uses the Async framework.

You need to capture the result of calling the Async method.

Which three elements should you include in the signature or parameters of the result method? Each correct answer

presents part of the solution.

NOTE: Each correct selection is worth one point.

- A. void
- B. static
- C. Boolean
- D. AsyncTaskResult
- E. container

Answer: ABD

Explanation:

AsyncTaskResult.GetAsyncTaskResult(Task) Method

public static Dynamics.AX.Application.AsyncTaskResult GetAsyncTaskResult (System.Threading.Tasks.Task asyncTask);

Applies to: Microsoft Dynamics 365 for Finance and Operations

Reference:

<https://learn.microsoft.com/en-us/dotnet/api/dynamics.ax.application.asyncresult>

<https://learn.microsoft.com/en-us/dotnet/api/dynamics.ax.application.asyncresult.getasyncresult>

QUESTION 353

A company uses Dynamics 365 Finance.

The company requires that a custom field named ExternalCustomerId on the table CustTable be added to an index to enhance performance.

You need to create the index.

Which field should you include in the index?

- A. CustTable.AccountNum
- B. CustTable.ExternalCustomerId
- C. CustTable.ReclId

Answer: C

Explanation:

Note: ReclId stands for Record Identifier. It is often called RowId (row identifier). It is a unique and incremental value stored with each and every row of the table.

Table index properties

The following table describes the properties that are available for indexes on tables.

* AllowDuplicates

If you set this property to Yes, the index can be non-unique. If you don't create at least one unique index, a unique index is created by combining the first index and the ReclId.

* CreateReclIdIndex

Specify whether an index on the Record ID field is created.

Incorrect:

Not A:

Account numbers fields have the AccountNum data type.

Reference:

<https://learn.microsoft.com/en-us/dynamics365/fin-ops-core/dev-itpro/dev-ref/application-explorer-aot-properties>

<https://learn.microsoft.com/en-us/dynamics365/fin-ops-core/dev-itpro/extensibility/add-index>

QUESTION 354

Hotspot Question

You have a Dynamics 365 Finance environment.

You have the following code: (Line numbers are included for reference only.)

```

01 class SalesPriceDiscount
02 {
03     ...
04     public void calculatePrice
05     {
06         ...
07     }
08     public static AmountCur getDiscount(Percent markup)
09     {
10         ...
11     }
12 }
13 [ExtensionOf(classStr(SalesPriceDiscount))]
14 final class SalesPriceDiscountMy_Extension
15 {
16     public void calculatePrice()
17     {
18         ...
19         next calculatePrice()
20         ...
21     }
22 }

```

For each of the following statements, select Yes if the statement is true. Otherwise, select No.

NOTE: Each correct selection is worth one point.

Answer Area

Statement	Yes	No
The calculatePrice() method in the extension class can access and manage public and protected methods and variables of the base class.	<input type="radio"/>	<input type="radio"/>
The calculatePrice() method in the extension class can be modified by adding conditional logic at line 18, which will determine whether line 19 will be executed.	<input type="radio"/>	<input type="radio"/>
The static method getDiscount() in Line 10 of the base class can be wrapped and extended by adding business logic to the extension class.	<input type="radio"/>	<input type="radio"/>
The extension class can be instantiated by running the following code:	<input type="radio"/>	<input type="radio"/>
<pre>SalesPriceDiscountMy_Extension myInstance = new SalesPriceDiscountMy_Extension();</pre>		

Answer:

Answer Area

Statement	Yes	No
The calculatePrice() method in the extension class can access and manage public and protected methods and variables of the base class.	<input checked="" type="radio"/>	<input type="radio"/>
The calculatePrice() method in the extension class can be modified by adding conditional logic at line 18, which will determine whether line 19 will be executed.	<input type="radio"/>	<input checked="" type="radio"/>
The static method getDiscount() in Line 10 of the base class can be wrapped and extended by adding business logic to the extension class.	<input type="radio"/>	<input checked="" type="radio"/>
The extension class can be instantiated by running the following code:	<input type="radio"/>	<input checked="" type="radio"/>
<pre>SalesPriceDiscountMy_Extension myInstance = new SalesPriceDiscountMy_Extension();</pre>		

QUESTION 355

You have a cloud-based Dynamics 365 Finance production environment.
You need to access the data to create Microsoft Power BI reports for the business.
What should you use?

- A. aggregate measurements
- B. aggregate dimensions
- C. Analysis Cubes
- D. Entity store

Answer: D

QUESTION 356

You are Dynamics 365 Finance developer.
You need to initialize an embedded Microsoft Power BI report.
Which code segment should you add to the form initialization method?

- A. `initializeReportControlV2(WorkspaceName, FormGroup)`
- B. `deployOrUpdateReport(powerBIConfiguration, reportName, resourceName)`
- C. `getPBIReportByResourceName(resourceName)`
- D. `initializeReportControlOnWorkspace(powerBIConfiguration, reportParameters, formGroupControl)`

Answer: D

Explanation:

Add analytics to workspaces by using Power BI Embedded
`PBIReportHelper.initializeReportControl` method is used to embed a Power BI report (.pbix resource) in a form group control.

Correct:

* `initializeReportControl(WorkspaceName, FormGroup)` [Will be deprecated in the future]

* `initializeReportControlV2(WorkspaceName, FormGroup)` [Best]

You should use `initializeReportControlV2` because `initializeReportControl` will be deleted one day. However, as of today `initializeReportControl` just calls `initializeReportControlV2` inside of it, So there is no difference.

```
* initializeCustomReportControl(
    resourceName,
    formGroupControl,
    reportCustomParams
)
```

Incorrect:

```
* addReportControl(formGroupControl)
```

```
* deployOrUpdateReport(powerBIConfiguration, reportName, resourceName)
```

```
* getPBIReportByResourceName(resourceName)
```

```
* initializeReportControlInternal(powerBIConfiguration, reportParameters, reportControl, showError)
```

```
* initializeReportControlOnWorkspace(powerBIConfiguration, reportParameters, formGroupControl)
```

```
* importAndStoreReport(powerBIConfiguration, resourceName, isUplate)
```

Reference:

<https://learn.microsoft.com/en-us/dynamics365/fin-ops-core/dev-itpro/analytics/add-analytics-tab-workspaces>

<https://community.dynamics.com/forums/thread/details/?threadid=e0e8684c-d95c-4191-b798-31324e45418f>

QUESTION 357

A company requires custom SSRS reports for a Dynamics 365 Supply Chain Management implementation. One SSRS report requires the use of a custom class to process data for a report.

You need to implement the data source type to use.

Which data source type should you implement?

- A. AX enum provider
- B. Query
- C. Report data provider (RDP)

D. Business logic

Answer: C

Explanation:

When you define a report in Microsoft Dynamics AX you must specify how to access the data for your report. The options for data source type are query, business logic, report data provider, and AX enum provider.

* Report Data Provider

Use when the data to be rendered in the report is not available through a query, you need to further process the data at the time the report is run, and the business logic is based on X++. The following is a list of specific cases when you would use a report data provider:

You are using a parameter that is entered in the UI in X++ code, and the business logic processing is based on that parameter.

Data to be rendered can be accessed by calling X++ business classes.

You are using the dynamic filter and want to add more filters at runtime based on UI parameters.

Reference:

<https://learn.microsoft.com/en-us/dynamicsax-2012/appuser-itpro/guidance-for-choosing-the-data-source-type>

<https://learn.microsoft.com/en-us/dynamicsax-2012/appuser-itpro/guidance-for-choosing-the-data-source-type>

QUESTION 358

Drag and Drop Question

A company uses Dynamics 365 Finance.

The company plans to send banking information by using Electronic reporting (ER).

You need to create an ER data model.

In which order should you perform the actions? To answer, move all actions from the list of actions to the answer area and arrange them in the correct order.

NOTE: More than one order of answer choices is correct. You will receive credit for any of the correct orders you select.

Actions		Answer area
Define the structure of a party participating in a payment process.		
Create the data model configuration.	➤	
Define the bank structure for the model.	➤	
Create the data model.	➤	

Answer:

Actions		Answer area
		Create the data model.
	➤	Define the structure of a party participating in a payment process.
	➤	Define the bank structure for the model.
		Create the data model configuration.

QUESTION 359

A company uses Dynamics 365 Finance. The company has a customized version of the sales invoice report.

The sales department requires a new field in the header of the report. You add the field in the report in Visual Studio.

You build the Visual Studio solution and test the changes to the report in your development environment.

The new field does not appear in the print preview of the report.

You need to ensure that the new field appears in the header.

What should you do?

A. Synchronize the database from Visual Studio.

- B. Restart the SQL Server Reporting Services service.
- C. Restart IIS/IIS Express.
- D. Deploy the report.

Answer: D

Explanation:

After making changes to a report in Visual Studio, especially if the changes involve modifying the design or adding fields, you need to deploy the updated report to the reporting server for the changes to take effect. In Dynamics 365 Finance, reports are handled by SQL Server Reporting Services (SSRS), and changes made to a report in Visual Studio are not immediately reflected until the report is deployed to SSRS.

QUESTION 360

Drag and Drop Question

A company uses Dynamics 365 Finance and Microsoft Power Platform services.

The company requires a reporting tool with which they can perform the following tasks:

- Print a PDF version of a standard sales invoice to send to customers by using a query as a data source.
- Create an interactive dashboard for the controlling department to view the budget execution.
- Generate vendor payment files in text format.

You need to select a reporting solution for each requirement.

Which reporting solution should you use? To answer, move the appropriate reporting solution to the correct requirement. You may use each reporting solution once, more than once, or not at all. You may need to move the split bar between panes or scroll to view content.

NOTE: Each correct selection is worth one point.

Answer Area

Reporting solutions

- SSRS Report
- Power BI service
- Electronic reporting

Reporting tools available in Dynamics 365 Finance

Requirement

- Sales invoice
- Budget dashboard
- Payment file

Reporting solution

-
-
-

Answer:

Answer Area

Reporting solutions

-
-
-

Reporting tools available in Dynamics 365 Finance

Requirement

- Sales invoice
- Budget dashboard
- Payment file

Reporting solution

- SSRS Report
- Power BI service
- Electronic reporting

QUESTION 361

Drag and Drop Question

A company plans to deploy Dynamics 365 Finance.

You need to recommend deployment options for the company.

What should you recommend? To answer, drag the appropriate deployment options to the correct application requirement. Each deployment option may be used once, more than once, or not at all. You may need to drag the split bar between panes or scroll to view content.

NOTE: Each correct selection is worth one point.

Deployment types	Answer Area	
	Requirement	Deployment type
cloud only	Export data to your own data warehouse.	<input type="text"/>
on-premises only	Configure SharePoint integration.	<input type="text"/>
cloud or on-premises	Implement Lifecycle services features.	<input type="text"/>
	Save or load Task Recorder recordings from a BPM library.	<input type="text"/>

Answer:

Deployment types	Answer Area	
	Requirement	Deployment type
cloud only	Export data to your own data warehouse.	cloud or on-premises
on-premises only	Configure SharePoint integration.	cloud only
cloud or on-premises	Implement Lifecycle services features.	cloud or on-premises
	Save or load Task Recorder recordings from a BPM library.	cloud only

QUESTION 362

A company uses Dynamics 365 finance and operations apps.

The company must implement efficient business events to allow an external system to subscribe to events coming from Dynamics 365 finance and operations apps.

You need to ensure the business events are efficient.

Which two methods should you use for the configuration? Each correct answer presents a complete solution.

NOTE: Each correct selection is worth one point.

- A. HTTP time-out
- B. Endpoints allowed per event
- C. Processing threads
- D. Bundle size
- E. Retry count

Answer: CD

Explanation:

Business events, Performance

The business events framework has two primary settings that can affect performance: Processing threads and Bundle size. The application allocates dedicated batch threads to process business events in near-real time. Because threads are a shared resource for all batch processing, you must take care when you decide to change the thread allocation for business events.

* Processing threads - The number of threads to use to process business events.

With dedicated processing for business events, the thread count is the number per Batch Application Object Server (AOS) instance.

The maximum value is 4.

* Bundle size - The number of events to group together at a time for processing by a thread.

By increasing the number, you produce fewer bundles and reduce the ability to distribute the events to parallel threads. By decreasing the number, you produce more bundles and increase the ability to distribute the events to parallel threads. However, if you make the number too small, you will cause unnecessary parallelization on small bundles.

Note: Business events provide a mechanism that lets external systems receive notifications from finance and operations apps. In this way, business actions can be performed in response to the business events.

Business events occur when a business process is run. During a business process, users who participate in it perform business actions to complete the tasks that make up the business process.

A business action that a user performs can be either a workflow action or a non-workflow action. Approval of a purchase requisition is an example of a workflow action, whereas confirmation of a purchase order is an example of a non-workflow action. Both types of actions can generate business events that external systems can use in integration and notification scenarios.

Reference:

<https://learn.microsoft.com/en-us/dynamics365/fin-ops-core/dev-itpro/business-events/home-page>

QUESTION 363

Hotspot Question

A company uses Dynamics 365 finance and operations apps and Dataverse.

The company must be able to transfer data between the finance and operations apps and Dataverse by using virtual entities. The company requires the finance and operations apps security role to be assigned to a service user to successfully use a virtual entity.

You need to configure the virtual entities.

Which configuration values should you use for each scenario? To answer, select the appropriate options in the answer area.

NOTE: Each correct selection is worth one point.

Scenario	Virtual entities configuration value
Assign the finance and operations apps security role to a service user.	<div style="border: 1px solid black; padding: 2px;"> <div style="text-align: right; border-bottom: 1px solid black;">▼</div> <div style="padding: 2px;"> Dataverse virtual entity anonymous user Dataverse virtual entity authenticated user Dataverse virtual entity integration app Data management operations user </div> </div>
Configure the point of translation within the finance and operations apps during a request.	<div style="border: 1px solid black; padding: 2px;"> <div style="text-align: right; border-bottom: 1px solid black;">▼</div> <div style="padding: 2px;"> CDSVirtualEntityAdaptcrService CDSVirtualEntityAuthorizationService DMFEntityWriterService DMFStagingService </div> </div>
Select the connection type between Dataverse and the finance and operations apps.	<div style="border: 1px solid black; padding: 2px;"> <div style="text-align: right; border-bottom: 1px solid black;">▼</div> <div style="padding: 2px;"> Business-to-Business (B2B) Business-to-Consumer (B2C) Consumer-to-Consumer (C2C) Service-to-Service (S2S) </div> </div>

Answer:

Scenario

Assign the finance and operations apps security role to a service user.

Virtual entities configuration value

	▼
Dataverse virtual entity anonymous user	
Dataverse virtual entity authenticated user	
Dataverse virtual entity integration app	
Data management operations user	

Configure the point of translation within the finance and operations apps during a request.

	▼
CDSVirtualEntityAdaptorService	
CDSVirtualEntityAuthorizationService	
DMFEntityWriterService	
DMFStagingService	

Select the connection type between Dataverse and the finance and operations apps.

	▼
Business-to-Business (B2B)	
Business-to-Consumer (B2C)	
Consumer-to-Consumer (C2C)	
Service-to-Service (S2S)	

QUESTION 364

Drag and Drop Question

A company uses Dynamics 365 Finance and Dynamics 365 Supply Chain Management.

The company plans to integrate Dynamics 365 Sales customer data with Finance and Supply Chain Management.

You need to integrate the data.

Which data integration option should you select for each scenario? To answer, drag the appropriate data integration options to the correct scenarios. Each data integration option may be used once, more than once, or not at all. You may need to drag the split bar between panes or scroll to view content.

NOTE: Each correct selection is worth one point.

Data integration options	Answer Area	Data integration option
Open Data Protocol (OData)	<p>Scenario</p> <p>Move customer data from an on-premises app to Finance in near-real time by using an API.</p> <p>Sync Sales customer data with Supply Chain Management.</p>	
Dual-write		
Custom service		
Azure Data Lake Integration	Update customer data from Dynamics 365 finance and operations apps by using SOAP with an e-commerce app.	

Answer:

Data integration options	Answer Area	Data integration option
	<p>Scenario</p> <p>Move customer data from an on-premises app to Finance in near-real time by using an API.</p> <p>Sync Sales customer data with Supply Chain Management.</p>	Open Data Protocol (OData)
		Dual-write
		Custom service
Azure Data Lake integration	Update customer data from Dynamics 365 finance and operations apps by using SOAP with an e-commerce app.	

QUESTION 365

Drag and Drop Question

You are importing data packages into Dynamics 365 Finance from external systems.

You must import the data packages by using the Data management package REST API. You must check the status after the import is triggered.

You need to call the HTTP operations.

Which three actions should you perform in sequence? To answer, move the appropriate actions from the list of actions to the answer area and arrange them in the correct order.

Actions	Answer Area
Call a POST method to the /data/DataManagement/DefinitionGroups/Microsoft.Dynamics.DataEntities.GetExportPackageUI endpoint.	
Call a POST method to the /data/DataManagement/DefinitionGroups/Microsoft.Dynamics.DataEntities.ImportFromPackage endpoint.	
Call a POST method to the /data/DataManagement/DefinitionGroups/Microsoft.Dynamics.DataEntities.GetAzureWriteUI endpoint.	
Call a POST method to the /data/DataManagement/DefinitionGroups/Microsoft.Dynamics.GetExecutorErrors endpoint.	
Call a POST method to the /data/DataManagement/DefinitionGroups/Microsoft.Dynamics.GetExecutorSummaryStatus endpoint.	

Answer:

Actions	Answer Area
Call a POST method to the /data/DataManagement/DefinitionGroups/Microsoft.Dynamics.DataEntities.GetExportPackageUI endpoint.	Call a POST method to the /data/DataManagement/DefinitionGroups/Microsoft.Dynamics.DataEntities.GetAzureWriteUI endpoint.
	Call a POST method to the /data/DataManagement/DefinitionGroups/Microsoft.Dynamics.DataEntities.ImportFromPackage endpoint.
	Call a POST method to the /data/DataManagement/DefinitionGroups/Microsoft.Dynamics.GetExecutorSummaryStatus endpoint.
Call a POST method to the /data/DataManagement/DefinitionGroups/Microsoft.Dynamics.GetExecutorErrors endpoint.	

QUESTION 366

You are training a new Dynamics 365 Finance developer.

You need to recommend where asynchronous integrations should be used instead of synchronous integrations.

For which scenario should you recommend asynchronous integration?

- A. A retailer requires all new customer data captured at point of sale (POS) terminals through the day sent back to the system.
- B. A service company needs workers to be able to access just-in-time inventory data from the field by using a third-party Software as a Service (SaaS) application to ensure they have parts to complete a service.
- C. A retailer wants to ensure gift card balances are communicated back to the system from point of sale (POS) terminals in near real-time.
- D. A manufacturer wants to move production data from an on-premises deployment Dynamics 365 Finance in near real-time.

Answer: A

Explanation:

For this question these are the correct answers:

- * A company uses an on-premises inventory management system that needs to receive sales order data every hour throughout the day.
- * A retailer requires all new customer data captured at point of sale (POS) terminals through the day sent back to the system.

Note:

An asynchronous pattern is a non-blocking pattern, where the caller submits the request and then continues without waiting for a response.

Typical scenarios and patterns that use batch data integrations (asynchronous pattern)

Here is a typical scenario that uses batch data APIs.

Import large volumes of sales orders

A company receives a large volume of sales orders from a front-end system that runs on-premises. These orders must periodically be sent to the application for processing and management.

A synchronous pattern is a blocking request and response pattern, where the caller is blocked until the callee has finished running and gives a response.

For this question these are the incorrect answers:

These are better served by a synchronous setup (keywords include real-time, just-in-time).

- * A company uses workflow for purchasing approvals, which then sends just-in-time approval information to a third-party application for approvers to review.
- * A manufacturer wants to move production data from an on-premises deployment Dynamics 365 Finance in near real-time.
- * A retailer wants to ensure gift card balances are communicated back to the system from point of sale (POS) terminals in near real-time.
- * A service company needs workers to be able to access just-in-time inventory data from the field by using a third-party

Software as a Service (SaaS) application to ensure they have parts to complete a service.

* A warehouse wants to track movement of all inventory from scanners to the system.

* When products are updated in Finance and Operations, a third-party application that contains the same product information needs to also be updated in near real-time.

Reference:

<https://docs.microsoft.com/en-us/dynamics365/fin-ops-core/dev-itpro/data-entities/integration-overview>

QUESTION 367

A company requires Dynamics 365 finance and operations apps to notify third-party applications when data from purchase orders is available for consumption.

You need to configure the trigger to capture the purchase order data.

Which mechanism should you use?

- A. Workflow framework export
- B. Business event
- C. Batch framework
- D. SysTest framework

Answer: B

Explanation:

Correct:

* Business event

* Data event

A business event could be e.g. the posting of a purchase order confirmation. Data events will be triggered on data changes (Create, Update and Delete). E.g. a purchase order header has been created.

Incorrect:

* Batch framework

* Data management framework

* Recurring data entity export

* SysOperation framework

* SysTest framework

* Workflow framework export

Reference:

<https://community.dynamics.com/forums/thread/details/?threadid=9fb1031d-a9ff-41b3-9e07-12b8493cee63>

QUESTION 368

Drag and Drop Question

A company has a Dynamics 365 finance and operations app.

A user requests a data entity for the sales order header information in a Power BI report that uses OData.

You need to create a data entity based on the sales order header information.

Which five actions should you perform in sequence? To answer, move the appropriate actions from the list of actions to the answer area and arrange them in the correct order.

Actions

Steps to create and configure a data entity based on sales order header information.

Build the solution and perform a database sync.	
Add all fields from the SalesTable data source to the data entity.	
Add a new item to the Visual Studio project of category Data Model, type of DataEntity.	>
Disable the public API and disable data management capabilities.	<
Disable the public API and enable data management capabilities.	
Use the data entity wizard to specify the primary data source as SalesTable, and the Entity category as Transaction.	
Enable the public API and disable data management capabilities.	

Answer:

Dynamics 365, Development and administration for finance and operations apps

Create alert rules

Alerts as business events

You can send alerts externally using the business events framework. When creating an alert, set Organization-wide to No and set Send externally to Yes. After you have the alert triggering the business event, you can trigger a flow built in Power Automate using the When a business event occurs trigger on the finance and operations connector, or explicitly send the event to a business events endpoint via the Business events catalog.

Reference:

<https://learn.microsoft.com/en-us/dynamics365/fin-ops-core/fin-ops/get-started/create-alerts>

QUESTION 371

Drag and Drop Question

A company has a Dynamics 365 finance and operations app.

The company has the following requirements for data entities:

- Must asynchronously import XML files that contain sales order header and line information.

- Must use an OData endpoint to enable two measures and two attributes from the CustTransView view in a PowerBI report.

You need to identify the data entity type to implement.

Which data entity type should you use? To answer, move the appropriate data entities to the correct requirements. You may use each data entity once, more than once, or not at all.

Data entities		Data entity requirements.		Data entity
Aggregate data entity	•	Requirement		<input type="text"/>
Composite data entity	•	Asynchronously import XML sales order header information and line data.	•	<input type="text"/>
	•	Use OData endpoint to enable two measures and two attributes from CustTransView.	•	

Answer:

Data entities		Data entity requirements.		Data entity
<input type="text"/>	•	Requirement		Composite data entity
<input type="text"/>	•	Asynchronously import XML sales order header information and line data.	•	Aggregate data entity
	•	Use OData endpoint to enable two measures and two attributes from CustTransView.	•	

QUESTION 372

A company implements Dynamics 365 Finance and Dynamics 365 Supply Chain Management. The company plans to perform a sales history analysis on existing customers, including their sales history and purchases.

You are creating an extension to create a sales history table that will run after the close of each period. The historical information must include customer information, date of purchase, and items that are purchased including product descriptions.

You need to ensure that the process for retrieving historical information minimizes database calls.

Which method should you use?

- A. RecordInsertList
- B. RecordSortedList
- C. Insert_recordset
- D. doInsert

Answer: A

Explanation:

You can use SQL statements, either interactively or in source code, to insert one or more rows into tables that are stored in the database.

insert method - Insert one row at a time.

doInsert method - Insert one row at a time.

insert_recordset statement - Copy multiple records directly from one or more tables into another table in one database trip.

RecordInsertList.insertDatabase - Insert multiple rows at the same time in one database trip. Use this construct when you don't have to sort the data.

RecordSortedList.insertDatabase - Insert multiple rows at the same time in one database trip. Use this construct when you want a subset of data from a specific table, and you want that data to be sorted in an order that doesn't currently exist as an index.

RecordSortedList, RecordInsertList, and insert_recordset let you insert multiple records. By using these methods, you reduce communication between the application and the database. Therefore, you help increase performance. In some situations, record set-based operations can fall back to record-by-record operations.

Reference:

<https://learn.microsoft.com/en-us/dynamics365/fin-ops-core/dev-itpro/dev-ref/xpp-data/xpp-insert>

<https://learn.microsoft.com/en-us/dotnet/api/dynamics.ax.application.recordinsertlist>

<https://learn.microsoft.com/en-us/dotnet/api/dynamics.ax.application.recordsortedlist>

QUESTION 373

Drag and Drop Question

You are working on a project that uses out-of-the-box OData endpoints and custom web services.

HTTP calls must be used to retrieve data and perform operations with minimal development effort.

All integration calls must be automated so that no user interaction is required once they are configured.

The following operations must be created:

- Obtain a list of customers from a customer group.
- Post a sales order invoice.
- Obtain a vendor balance.

You need to design the integrations.

Which integration endpoint should you use for each requirement? To answer, move the appropriate integration endpoints to the correct requirements. You may use each integration endpoint once, more than once, or not at all. You may need to move the split bar between panes or scroll to view content.

NOTE: Each correct selection is worth one point.

Integration endpoints		OData and custom web services operations	Integration endpoint
OData		Requirement	
Excel add-in	•	Get a list of customers filtered on the customer group field.	
Custom service	•	Post a sales order invoice.	
	•	Get the balance of a vendor.	

Answer:

Integration endpoints		OData and custom web services operations	Integration endpoint
OData		Requirement	
Excel add-in	•	Get a list of customers filtered on the customer group field.	OData
Custom service	•	Post a sales order invoice.	Custom service
	•	Get the balance of a vendor.	OData

QUESTION 374

You are training a new Dynamics 365 Finance developer.

You need to recommend where asynchronous integrations should be used instead of synchronous integrations.

For which scenario should you recommend asynchronous integration?

- A. A company uses an on-premises inventory management system that needs to receive sales order data every hour throughout the day.
- B. A retailer wants to ensure gift card balances are communicated back to the system from point of sale (POS) terminals in near real-time.
- C. A service company needs workers to be able to access just-in-time inventory data from the field by using a third-party Software as a Service (SaaS) application to ensure they have parts to complete a service.

- D. A manufacturer wants to move production data from an on-premises deployment Dynamics 365 Finance in near real-time.

Answer: A

Explanation:

Correct:

- * A company uses an on-premises inventory management system that needs to receive sales order data every hour throughout the day.
- * A retailer requires all new customer data captured at point of sale (POS) terminals through the day sent back to the system.

Incorrect:

These are better served by a synchronous setup (keywords include real-time, just-in-time).

- * A company uses workflow for purchasing approvals, which then sends just-in-time approval information to a third-party application for approvers to review.
- * A manufacturer wants to move production data from an on-premises deployment Dynamics 365 Finance in near real-time.
- * A retailer wants to ensure gift card balances are communicated back to the system from point of sale (POS) terminals in near real-time.
- * A service company needs workers to be able to access just-in-time inventory data from the field by using a third-party Software as a Service (SaaS) application to ensure they have parts to complete a service.
- * A warehouse wants to track movement of all inventory from scanners to the system.
- * When products are updated in Finance and Operations, a third-party application that contains the same product information needs to also be updated in near real-time.

Note:

An asynchronous pattern is a non-blocking pattern, where the caller submits the request and then continues without waiting for a response.

Typical scenarios and patterns that use batch data integrations (asynchronous pattern)

Here is a typical scenario that uses batch data APIs.

Import large volumes of sales orders

A company receives a large volume of sales orders from a front-end system that runs on-premises. These orders must periodically be sent to the application for processing and management.

A synchronous pattern is a blocking request and response pattern, where the caller is blocked until the callee has finished running and gives a response.

Reference:

<https://docs.microsoft.com/en-us/dynamics365/fin-ops-core/dev-itpro/data-entities/integration-overview>

QUESTION 375

A company requires Dynamics 365 finance and operations apps to notify third-party applications when data from purchase orders is available for consumption.

You need to configure the trigger to capture the purchase order data.

Which mechanism should you use?

- A. SysOperation framework
- B. Batch framework
- C. Business event
- D. Workflow framework export

Answer: C

Explanation:

Correct:

- * Business event
- * Data event

A business event could be e.g. the posting of a purchase order confirmation. Data events will be triggered on data changes (Create, Update and Delete). E.g. a purchase order header has been created.

Incorrect:

- * Batch framework
- * Data management framework
- * Recurring data entity export
- * SysOperation framework

- * SysTest framework
- * Workflow framework export

Reference:

<https://community.dynamics.com/forums/thread/details/?threadid=9fb1031d-a9ff-41b3-9e07-12b8493cee63>

QUESTION 376

Note: This question is part of a series of questions that present the same scenario. Each question in the series contains a unique solution that might meet the stated goals. Some question sets might have more than one correct solution, while others might not have a correct solution.

After you answer a question in this section, you will NOT be able to return to it. As a result, these questions will not appear in the review screen.

You are integrating a third-party application with Dynamics 365 Finance.

The incoming integration sends a high volume of data that contains journal lines that must be imported into Dynamics 365 Finance.

You must import a Microsoft Excel file from the third party that contains the journal lines without the third-party application waiting for data to be processed.

You need to select the appropriate integration API.

Solution: Use the recurring integrations API.

Does the solution meet the goal?

- A. Yes
- B. No

Answer: A

Explanation:

Correct:

- * Use the recurring integrations API

Is asynchronous.

Files and data packages both accepted.

Incorrect:

- * Use the Data management package API.

Only works for data packages.

- * Use the OData endpoint.

OData endpoint is synchronous. Need a synchronous transfer.

Note: Summary of Integrations in Dynamics 365 for Finance and Operations

- * Use the recurring integrations API

Recurring integrations API

Batch job is scheduled in Finance and Operations

Blob storage is used to 'feed' the recurring import data job (upload import file)

Blob storage is used to 'get' the exported data created by the recurring export job (download export file)

Files and data packages both accepted

REST and SOAP protocols can be used

Service type is custom service

Incorrect:

- * Use the Data management package API.

Data management framework's API

Scheduling outside Finance and Operations

Only data packages

REST protocol only

Service type is OData

- * Use the OData endpoint.

OData endpoint is synchronous. Need a synchronous transfer.

Integrations Utilizing OData Service

The pattern is OData, it is synchronous and there is a batch scheduled within Dynamics 365 Finance and Operations.

- * Microsoft Office Integration

- Real time

- An example for MS Office integration; when you open master data (Vendor) in MS Excel for editing, edit the data, then import it back to Dynamics 365 Finance and Operations, it uses Data Entity and DMF and consumes OData for export and import.

- * Mobile App Integration

- Real time
 - For example, when you create a mobile app for a Tablet, which allows you to enter a sales order, when you click on Submit, it creates the sales order in real time in Dynamics 365 Finance and Operations.
 - * Third Party Integrations
 - Real time
 - Using OData endpoint and services which can be consumed by third party web sites and integration web services.
 - For example, you have a home builder third party application and you enter a new customer and contract using your web-based internet site, then your integration interface sends the customer details and contact information to Dynamics 365 Finance and Operations, where the new customer details with contact information will be created in real time.
- Reference:
<https://community.dynamics.com/blogs/post/?postid=cedd2d40-0563-4132-be29-aea2d0240e0f>
<https://learn.microsoft.com/en-us/dynamics365/fin-ops-core/dev-itpro/data-entities/data-management-api>

QUESTION 377

Note: This question is part of a series of questions that present the same scenario. Each question in the series contains a unique solution that might meet the stated goals. Some question sets might have more than one correct solution, while others might not have a correct solution.

After you answer a question in this section, you will NOT be able to return to it. As a result, these questions will not appear in the review screen.

You are integrating a third-party application with Dynamics 365 Finance.

The incoming integration sends a high volume of data that contains journal lines that must be imported into Dynamics 365 Finance.

You must import a Microsoft Excel file from the third party that contains the journal lines without the third-party application waiting for data to be processed.

You need to select the appropriate integration API.

Solution: Use the OData endpoint.

Does the solution meet the goal?

- A. Yes
- B. No

Answer: B

Explanation:

Correct:

* Use the recurring integrations API

Is asynchronous.

Files and data packages both accepted.

Incorrect:

* Use the Data management package API.

Only works for data packages.

* Use the OData endpoint.

OData endpoint is synchronous. Need a synchronous transfer.

Note: Summary of Integrations in Dynamics 365 for Finance and Operations

* Use the recurring integrations API

Recurring integrations API

Batch job is scheduled in Finance and Operations

Blob storage is used to 'feed' the recurring import data job (upload import file)

Blob storage is used to 'get' the exported data created by the recurring export job (download export file)

Files and data packages both accepted

REST and SOAP protocols can be used

Service type is custom service

Incorrect:

* Use the Data management package API.

Data management framework's API

Scheduling outside Finance and Operations

Only data packages

REST protocol only

Service type is OData

* Use the OData endpoint.

OData endpoint is synchronous. Need a synchronous transfer.

Integrations Utilizing OData Service

The pattern is OData, it is synchronous and there is a batch scheduled within Dynamics 365 Finance and Operations.

* Microsoft Office Integration

- Real time

- An example for MS Office integration; when you open master data (Vendor) in MS Excel for editing, edit the data, then import it back to Dynamics 365 Finance and Operations, it uses Data Entity and DMF and consumes OData for export and import.

* Mobile App Integration

- Real time

- For example, when you create a mobile app for a Tablet, which allows you to enter a sales order, when you click on Submit, it creates the sales order in real time in Dynamics 365 Finance and Operations.

* Third Party Integrations

- Real time

- Using OData endpoint and services which can be consumed by third party web sites and integration web services.

- For example, you have a home builder third party application and you enter a new customer and contract using your web-based internet site, then your integration interface sends the customer details and contact information to Dynamics 365 Finance and Operations, where the new customer details with contact information will be created in real time.

Reference:

<https://community.dynamics.com/blogs/post/?postid=cedd2d40-0563-4132-be29-aea2d0240e0f>

<https://learn.microsoft.com/en-us/dynamics365/fin-ops-core/dev-itpro/data-entities/data-management-api>

QUESTION 378

Note: This question is part of a series of questions that present the same scenario. Each question in the series contains a unique solution that might meet the stated goals. Some question sets might have more than one correct solution, while others might not have a correct solution.

After you answer a question in this section, you will NOT be able to return to it. As a result, these questions will not appear in the review screen.

You are integrating a third-party application with Dynamics 365 Finance.

The incoming integration sends a high volume of data that contains journal lines that must be imported into Dynamics 365 Finance.

You must import a Microsoft Excel file from the third party that contains the journal lines without the third-party application waiting for data to be processed.

You need to select the appropriate integration API.

Solution: Use the Data management package API.

Does the solution meet the goal?

A. Yes

B. No

Answer: B

Explanation:

Correct:

* Use the recurring integrations API

Is asynchronous.

Files and data packages both accepted.

Incorrect:

* Use the Data management package API.

Only works for data packages.

* Use the OData endpoint.

OData endpoint is synchronous. Need a synchronous transfer.

Note: Summary of Integrations in Dynamics 365 for Finance and Operations

* Use the recurring integrations API

Recurring integrations API

Batch job is scheduled in Finance and Operations

Blob storage is used to 'feed' the recurring import data job (upload import file)

Blob storage is used to 'get' the exported data created by the recurring export job (download export file)

Files and data packages both accepted

REST and SOAP protocols can be used

Service type is custom service

Incorrect:

* Use the Data management package API.

Data management framework's API

Scheduling outside Finance and Operations

Only data packages

REST protocol only

Service type is OData

* Use the OData endpoint.

OData endpoint is synchronous. Need a synchronous transfer.

Integrations Utilizing OData Service

The pattern is OData, it is synchronous and there is a batch scheduled within Dynamics 365 Finance and Operations.

* Microsoft Office Integration

- Real time

- An example for MS Office integration; when you open master data (Vendor) in MS Excel for editing, edit the data, then import it back to Dynamics 365 Finance and Operations, it uses Data Entity and DMF and consumes OData for export and import.

* Mobile App Integration

- Real time

- For example, when you create a mobile app for a Tablet, which allows you to enter a sales order, when you click on Submit, it creates the sales order in real time in Dynamics 365 Finance and Operations.

* Third Party Integrations

- Real time

- Using OData endpoint and services which can be consumed by third party web sites and integration web services.

- For example, you have a home builder third party application and you enter a new customer and contract using your web-based internet site, then your integration interface sends the customer details and contact information to Dynamics 365 Finance and Operations, where the new customer details with contact information will be created in real time.

Reference:

<https://community.dynamics.com/blogs/post/?postid=cedd2d40-0563-4132-be29-aea2d0240e0f>

<https://learn.microsoft.com/en-us/dynamics365/fin-ops-core/dev-itpro/data-entities/data-management-api>

QUESTION 379

You are training a new Dynamics 365 Finance developer.

You need to recommend where asynchronous integrations should be used instead of synchronous integrations.

For which scenario should you recommend asynchronous integration?

- A. A warehouse wants to track movement of all inventory from scanners to the system.
- B. A retailer wants to ensure gift card balances are communicated back to the system from point of sale (POS) terminals in near real-time.
- C. A retailer requires all new customer data captured at point of sale (POS) terminals through the day sent back to the system.
- D. When products are updated in Finance and Operations, a third-party application that contains the same product information needs to also be updated in near real-time.

Answer: C

Explanation:

For this question these are the correct answers:

* A company uses an on-premises inventory management system that needs to receive sales order data every hour throughout the day.

* A retailer requires all new customer data captured at point of sale (POS) terminals through the day sent back to the system.

Note:

An asynchronous pattern is a non-blocking pattern, where the caller submits the request and then continues without waiting for a response.

Typical scenarios and patterns that use batch data integrations (asynchronous pattern)

Here is a typical scenario that uses batch data APIs.

Import large volumes of sales orders

A company receives a large volume of sales orders from a front-end system that runs on-premises. These orders must periodically be sent to the application for processing and management.

A synchronous pattern is a blocking request and response pattern, where the caller is blocked until the callee has finished running and gives a response.

For this question these are the incorrect answers:

These are better served by a synchronous setup (keywords include real-time, just-in-time).

- * A company uses workflow for purchasing approvals, which then sends just-in-time approval information to a third-party application for approvers to review.
- * A manufacturer wants to move production data from an on-premises deployment Dynamics 365 Finance in near real-time.
- * A retailer wants to ensure gift card balances are communicated back to the system from point of sale (POS) terminals in near real-time.
- * A service company needs workers to be able to access just-in-time inventory data from the field by using a third-party Software as a Service (SaaS) application to ensure they have parts to complete a service.
- * A warehouse wants to track movement of all inventory from scanners to the system.
- * When products are updated in Finance and Operations, a third-party application that contains the same product information needs to also be updated in near real-time.

Reference:

<https://docs.microsoft.com/en-us/dynamics365/fin-ops-core/dev-itpro/data-entities/integration-overview>