

- **Vendor: Microsoft**
- **Exam Code: MD-100**
- **Exam Name: Windows 10**
- **New Updated Questions from [Braindump2go](#) (Updated in [July/2020](#))**

Visit Braindump2go and Download Full Version MD-100 Exam Dumps

QUESTION 164

SIMULATION

Please wait while the virtual machine loads. Once loaded, you may proceed to the lab section. This may take a few minutes, and the wait time will not be deducted from your overall test time.

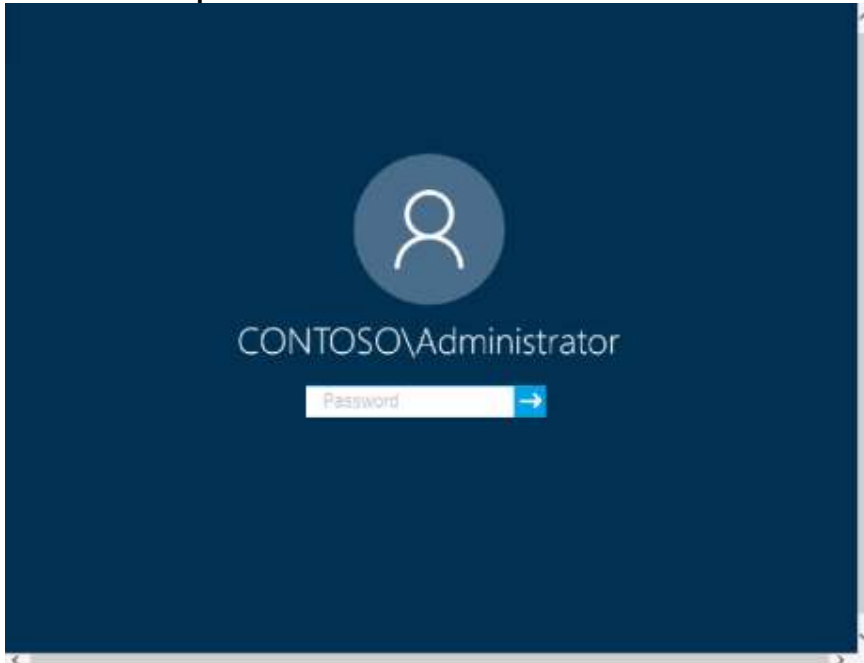
When the Next button is available, click it to access the lab section. In this section, you will perform a set of tasks in a live environment. While most functionality will be available to you as it would be in a live environment, some functionality (e.g., copy and paste, ability to navigate to external websites) will not be possible by design.

Scoring is based on the outcome of performing the tasks stated in the lab. In other words, it doesn't matter how you accomplish the task, if you successfully perform it, you will earn credit for that task.

Labs are not timed separately, and this exam may more than one lab that you must complete. You can use as much time as you would like to complete each lab. But, you should manage your time appropriately to ensure that you are able to complete the lab(s) and all other sections of the exam in the time provided.

Please note that once you submit your work by clicking the Next button within a lab, you will NOT be able to return to the lab.

Username and password



Use the following login credentials as needed:

To enter your password, place your cursor in the **Enter password** box and click on the password below.

Username: Contoso/Administrator

Password: Passw0rd!

The following information is for technical support purposes only:

Lab Instance: 10921597

[MD-100 Exam Dumps](#) **[MD-100 Exam Questions](#)** **[MD-100 PDF Dumps](#)** **[MD-100 VCE Dumps](#)**

<https://www.braindump2go.com/md-100.html>

Tasks**Computers**

Client1

Client2

Client3

DC1

You need to identify the total number of events that have Event ID 63 in the Application event log. You must type the number of identified events into C:\Folder1\FileA.txt.

To complete this task, sign in to the required computer or computers and perform the required action.

Answer:

1. Open Event Viewer.
2. Click the log that you want to filter, then click Filter Current Log from the Action pane or right-click menu. This will open the Filter Current Log dialog box.
3. You can specify a time period if you know approximately when the relevant events occurred. You can specify the event level, choosing between Critical, Warning, Verbose, Error and Information. If you select none of these, all event levels will be returned. You can't modify which event log is being checked as filters apply only to a single log.
4. You can choose the event sources which have generated the log entries, and search for key words, users, or computers. You can also **search using specific event IDs**.

Reference:

<https://www.manageengine.com/products/active-directory-audit/kb/how-to/how-to-search-the-event-viewer.html>

QUESTION 165

SIMULATION

Please wait while the virtual machine loads. Once loaded, you may proceed to the lab section. This may take a few minutes, and the wait time will not be deducted from your overall test time.

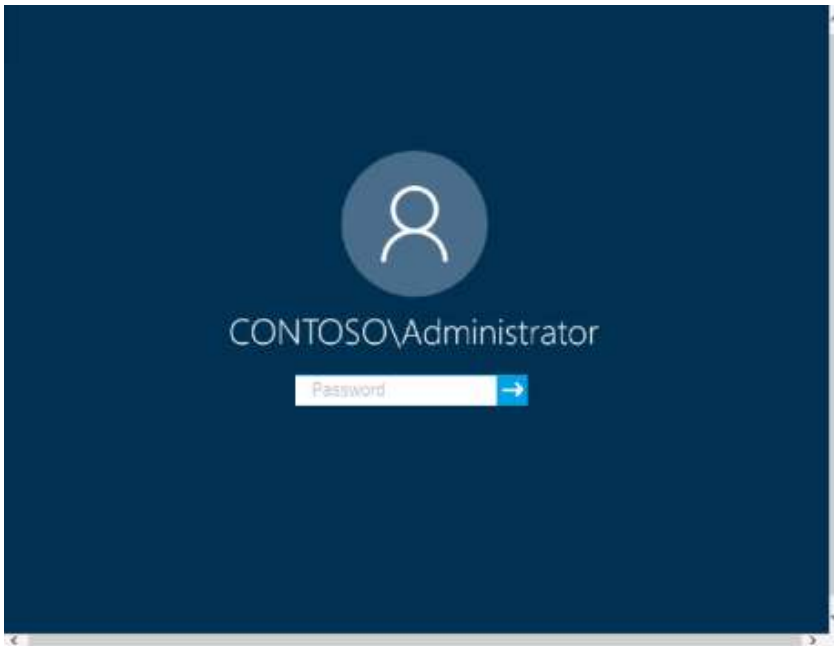
When the Next button is available, click it to access the lab section. In this section, you will perform a set of tasks in a live environment. While most functionality will be available to you as it would be in a live environment, some functionality (e.g., copy and paste, ability to navigate to external websites) will not be possible by design.

Scoring is based on the outcome of performing the tasks stated in the lab. In other words, it doesn't matter how you accomplish the task, if you successfully perform it, you will earn credit for that task.

Labs are not timed separately, and this exam may more than one lab that you must complete. You can use as much time as you would like to complete each lab. But, you should manage your time appropriately to ensure that you are able to complete the lab(s) and all other sections of the exam in the time provided.

Please note that once you submit your work by clicking the Next button within a lab, you will NOT be able to return to the lab.

Username and password



Use the following login credentials as needed:

To enter your password, place your cursor in the **Enter password** box and click on the password below.

Username: Contoso/Administrator

Password: Passw0rd!

The following information is for technical support purposes only:

Lab Instance: 11145882

Dashboard

- Local Server
- All Servers
- AD DS
- DNS
- File and Storage Services ▸

WELCOME TO SERVER MANAGER

QUICK START

1

Configure this local server

- 2 Add roles and features
- 3 Add other servers to manage
- 4 Create a server group
- 5 Connect this server to cloud services

[Hide](#)

WHAT'S NEW

LEARN MORE

ROLES AND SERVER GROUPS

Roles: 3 | Server groups: 1 | Servers total: 1

BPA results

<div style="background-color: #f4a460; padding: 5px; margin-bottom: 5px; display: flex; justify-content: space-between;"> AD DS 1 </div> <div style="background-color: #fff; padding: 5px;"> <div style="display: flex; align-items: center; margin-bottom: 5px;"> ↑ Manageability </div> <div style="margin-left: 20px;"> Events Services Performance BPA results </div> </div>	<div style="background-color: #f4a460; padding: 5px; margin-bottom: 5px; display: flex; justify-content: space-between;"> DNS 1 </div> <div style="background-color: #fff; padding: 5px;"> <div style="display: flex; align-items: center; margin-bottom: 5px;"> ↑ Manageability </div> <div style="margin-left: 20px;"> Events Services Performance BPA results </div> </div>
<div style="background-color: #f4a460; padding: 5px; margin-bottom: 5px; display: flex; justify-content: space-between;"> File and Storage Services 1 </div> <div style="background-color: #fff; padding: 5px;"> <div style="display: flex; align-items: center; margin-bottom: 5px;"> ↑ Manageability </div> <div style="margin-left: 20px;"> Events Services Performance BPA results </div> </div>	<div style="background-color: #d9534f; padding: 5px; margin-bottom: 5px; display: flex; justify-content: space-between;"> Local Server 1 </div> <div style="background-color: #fff; padding: 5px;"> <div style="display: flex; align-items: center; margin-bottom: 5px;"> ↑ Manageability </div> <div style="margin-left: 20px;"> Events <div style="background-color: #d9534f; color: white; padding: 2px 5px; display: inline-block; margin-bottom: 5px;">2</div> Services Performance BPA results </div> <div style="text-align: right; margin-top: 10px; font-size: small;">1/23/2020 9:30 PM</div> </div>
<div style="background-color: #d9534f; padding: 5px; margin-bottom: 5px; display: flex; justify-content: space-between;"> All Servers 1 </div> <div style="background-color: #fff; padding: 5px;"> <div style="display: flex; align-items: center; margin-bottom: 5px;"> ↑ Manageability </div> <div style="margin-left: 20px;"> Events <div style="background-color: #d9534f; color: white; padding: 2px 5px; display: inline-block; margin-bottom: 5px;">2</div> Services Performance BPA results </div> <div style="text-align: right; margin-top: 10px; font-size: small;">1/23/2020 9:30 PM</div> </div>	

Tasks**Computers**

Client1

Client2

Client3

DC1

You need to create an HTML report that shows which policies and policy settings are applied to CONTOSO\User1 on Client1. You must save the output to a file named Report.html in a folder named Folder1 on the C drive of Client1.

To complete this task, sign in to the required computer or computers.

Answer:

On Client1, log in as administrator.

Open command prompt and type:

gpresult /h CONTOSO\User1\C:\Folder1\Report.html

QUESTION 166

SIMULATION

Please wait while the virtual machine loads. Once loaded, you may proceed to the lab section. This may take a few minutes, and the wait time will not be deducted from your overall test time.

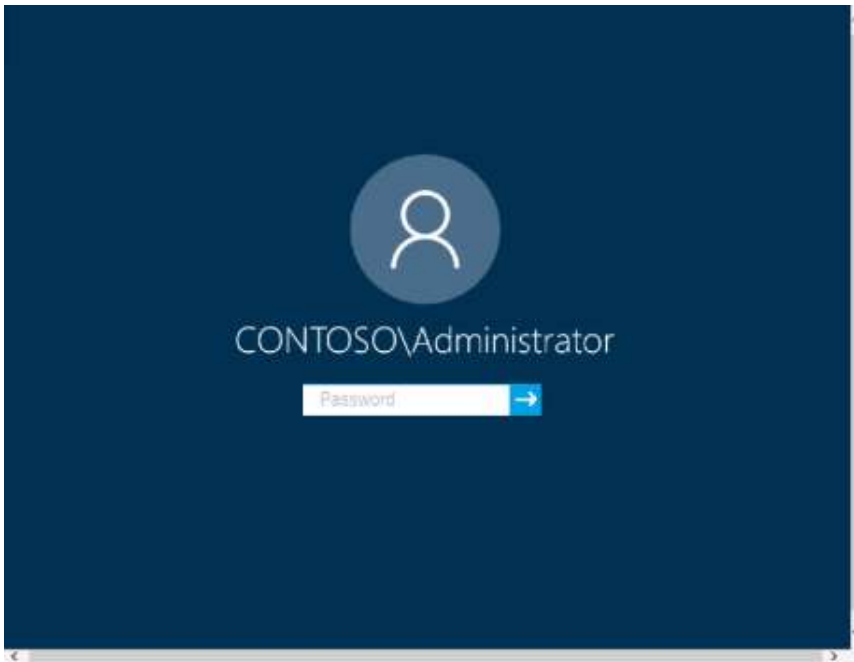
When the Next button is available, click it to access the lab section. In this section, you will perform a set of tasks in a live environment. While most functionality will be available to you as it would be in a live environment, some functionality (e.g., copy and paste, ability to navigate to external websites) will not be possible by design.

Scoring is based on the outcome of performing the tasks stated in the lab. In other words, it doesn't matter how you accomplish the task, if you successfully perform it, you will earn credit for that task.

Labs are not timed separately, and this exam may more than one lab that you must complete. You can use as much time as you would like to complete each lab. But, you should manage your time appropriately to ensure that you are able to complete the lab(s) and all other sections of the exam in the time provided.

Please note that once you submit your work by clicking the Next button within a lab, you will NOT be able to return to the lab.

Username and password



Use the following login credentials as needed:

To enter your password, place your cursor in the **Enter password** box and click on the password below.

Username: Contoso/Administrator

Password: Passw0rd!

The following information is for technical support purposes only:

Lab Instance: 11145882

Dashboard

- Local Server
- All Servers
- AD DS
- DNS
- File and Storage Services ▸

WELCOME TO SERVER MANAGER

QUICK START

WHAT'S NEW

LEARN MORE

1 Configure this local server

- 2 Add roles and features
- 3 Add other servers to manage
- 4 Create a server group
- 5 Connect this server to cloud services

Hide

ROLES AND SERVER GROUPS

Roles: 3 | Server groups: 1 | Servers total: 1

BPA results

AD DS 1

- Manageability
- Events
- Services
- Performance
- BPA results

DNS 1

- Manageability
- Events
- Services
- Performance
- BPA results

File and Storage Services 1

- Manageability
- Events
- Services
- Performance
- BPA results

Local Server 1

- Manageability
- Events
- 2 Services
- Performance
- BPA results

1/23/2020 9:30 PM

All Servers 1

- Manageability
- Events
- 2 Services
- Performance
- BPA results

1/23/2020 9:30 PM

Tasks

Computers

Client1

Client2

Client3

DC1

You need to ensure that the File History of Contoso\Administrator on Client1 is backed up automatically to \\DC1\Backups.

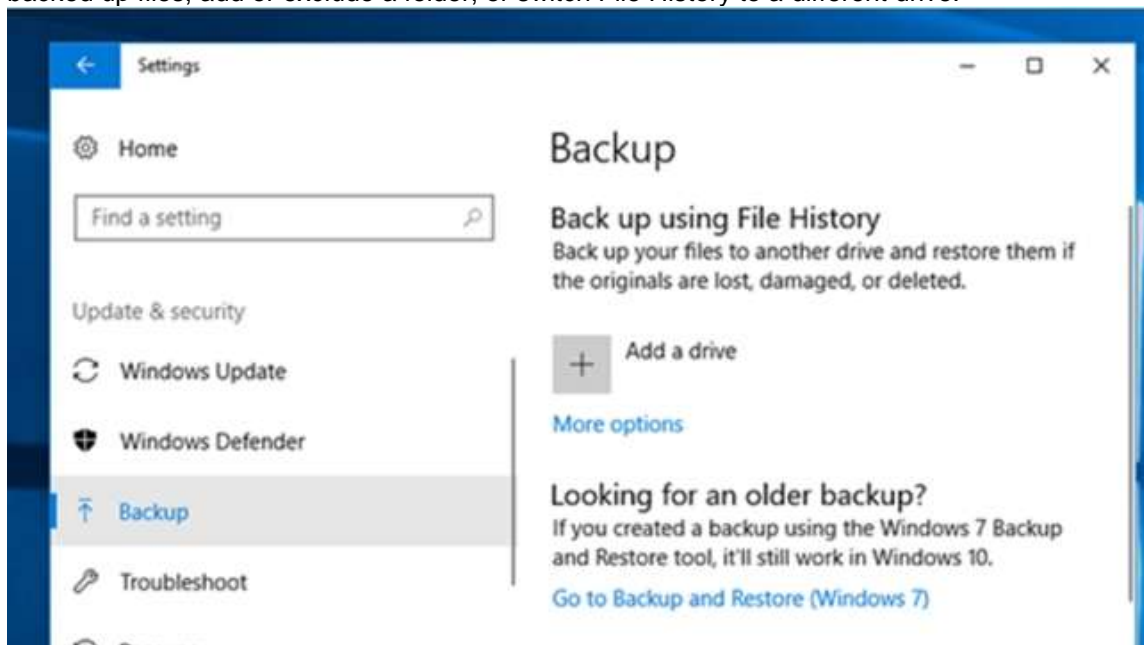
To complete this task, sign in to the required computer or computers.

Answer:

How to set up and enable File History

1. On Client1, go to Start > Settings > Update & Security.
2. Select Backup and click "Add a drive."
3. Select the drive or network location (\\DC1\Backups) you want to use for File History's backups.

Now click "More options." Here you can start a backup, change when your files are backed up, select how long to keep backed up files, add or exclude a folder, or switch File History to a different drive.



Click the "Back up now" button to start your first File History backup.

Reference:

<https://lifehacker.com/how-to-back-up-your-computer-automatically-with-windows-1762867473>

QUESTION 167

SIMULATION

[MD-100 Exam Dumps](#) **[MD-100 Exam Questions](#)** **[MD-100 PDF Dumps](#)** **[MD-100 VCE Dumps](#)**

<https://www.braindump2go.com/md-100.html>

Please wait while the virtual machine loads. Once loaded, you may proceed to the lab section. This may take a few minutes, and the wait time will not be deducted from your overall test time.

When the Next button is available, click it to access the lab section. In this section, you will perform a set of tasks in a live environment. While most functionality will be available to you as it would be in a live environment, some functionality (e.g., copy and paste, ability to navigate to external websites) will not be possible by design.

Scoring is based on the outcome of performing the tasks stated in the lab. In other words, it doesn't matter how you accomplish the task, if you successfully perform it, you will earn credit for that task.

Labs are not timed separately, and this exam may more than one lab that you must complete. You can use as much time as you would like to complete each lab. But, you should manage your time appropriately to ensure that you are able to complete the lab(s) and all other sections of the exam in the time provided.

Please note that once you submit your work by clicking the Next button within a lab, you will NOT be able to return to the lab.

Username and password



Use the following login credentials as needed:

To enter your password, place your cursor in the **Enter password** box and click on the password below.

Username: Contoso/Administrator

Password: Passw0rd!

The following information is for technical support purposes only:

Lab Instance: 11145882

Dashboard

- Local Server
- All Servers
- AD DS
- DNS
- File and Storage Services ▶

WELCOME TO SERVER MANAGER

QUICK START

1 Configure this local server

- 2 Add roles and features
- 3 Add other servers to manage
- 4 Create a server group
- 5 Connect this server to cloud services

Hide

WHAT'S NEW

LEARN MORE

ROLES AND SERVER GROUPS

Roles: 3 | Server groups: 1 | Servers total: 1

BPA results

<div style="background-color: #f4a460; padding: 2px; margin-bottom: 5px; display: flex; justify-content: space-between;"> AD DS 1 </div> <div style="padding: 5px;"> <p>Manageability</p> <p>Events</p> <p>Services</p> <p>Performance</p> <p>BPA results</p> </div>	<div style="background-color: #f4a460; padding: 2px; margin-bottom: 5px; display: flex; justify-content: space-between;"> DNS 1 </div> <div style="padding: 5px;"> <p>Manageability</p> <p>Events</p> <p>Services</p> <p>Performance</p> <p>BPA results</p> </div>
<div style="background-color: #f4a460; padding: 2px; margin-bottom: 5px; display: flex; justify-content: space-between;"> File and Storage Services 1 </div> <div style="padding: 5px;"> <p>Manageability</p> <p>Events</p> <p>Services</p> <p>Performance</p> <p>BPA results</p> </div>	<div style="background-color: #d9534f; padding: 2px; margin-bottom: 5px; display: flex; justify-content: space-between;"> Local Server 1 </div> <div style="padding: 5px;"> <p>Manageability</p> <p>Events</p> <div style="background-color: #d9534f; padding: 2px; margin-bottom: 5px; display: flex; justify-content: space-between;"> 2 Services </div> <p>Performance</p> <p>BPA results</p> <p style="text-align: right; font-size: x-small;">1/23/2020 9:30 PM</p> </div>
<div style="background-color: #d9534f; padding: 2px; margin-bottom: 5px; display: flex; justify-content: space-between;"> All Servers 1 </div> <div style="padding: 5px;"> <p>Manageability</p> <p>Events</p> <div style="background-color: #d9534f; padding: 2px; margin-bottom: 5px; display: flex; justify-content: space-between;"> 2 Services </div> <p>Performance</p> <p>BPA results</p> <p style="text-align: right; font-size: x-small;">1/23/2020 9:30 PM</p> </div>	

Tasks

Computers

Client1

Client2

Client3

DC1

You need to ensure that C:\Scripts\Configure.ps1 runs every time a user sign in to Client2.

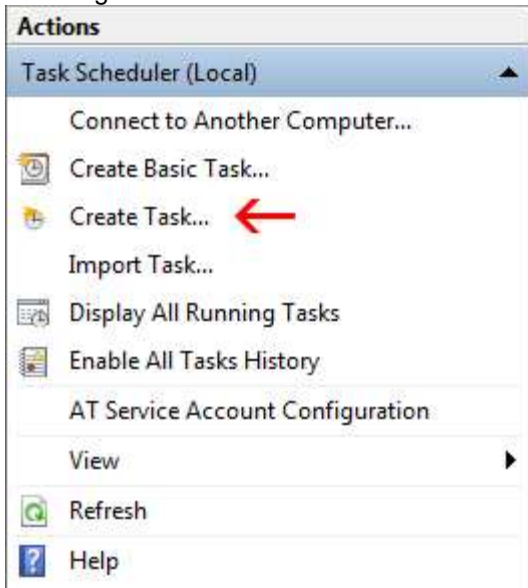
To complete this task, sign in to the required computer or computers.

Answer:

Go to the Start menu, type "Task Scheduler" and select it from the search results.



Task Scheduler can also be accessed in the Control Panel under Administrative Tools. In the right side of the Task Scheduler menu, under Actions, select “Create Task.”



On the General tab, enter a name and description for the task you're creating. Check the box “Run with highest privileges.”

Once you have filled out a name and description, click the “Triggers” tab, and then click “New.”

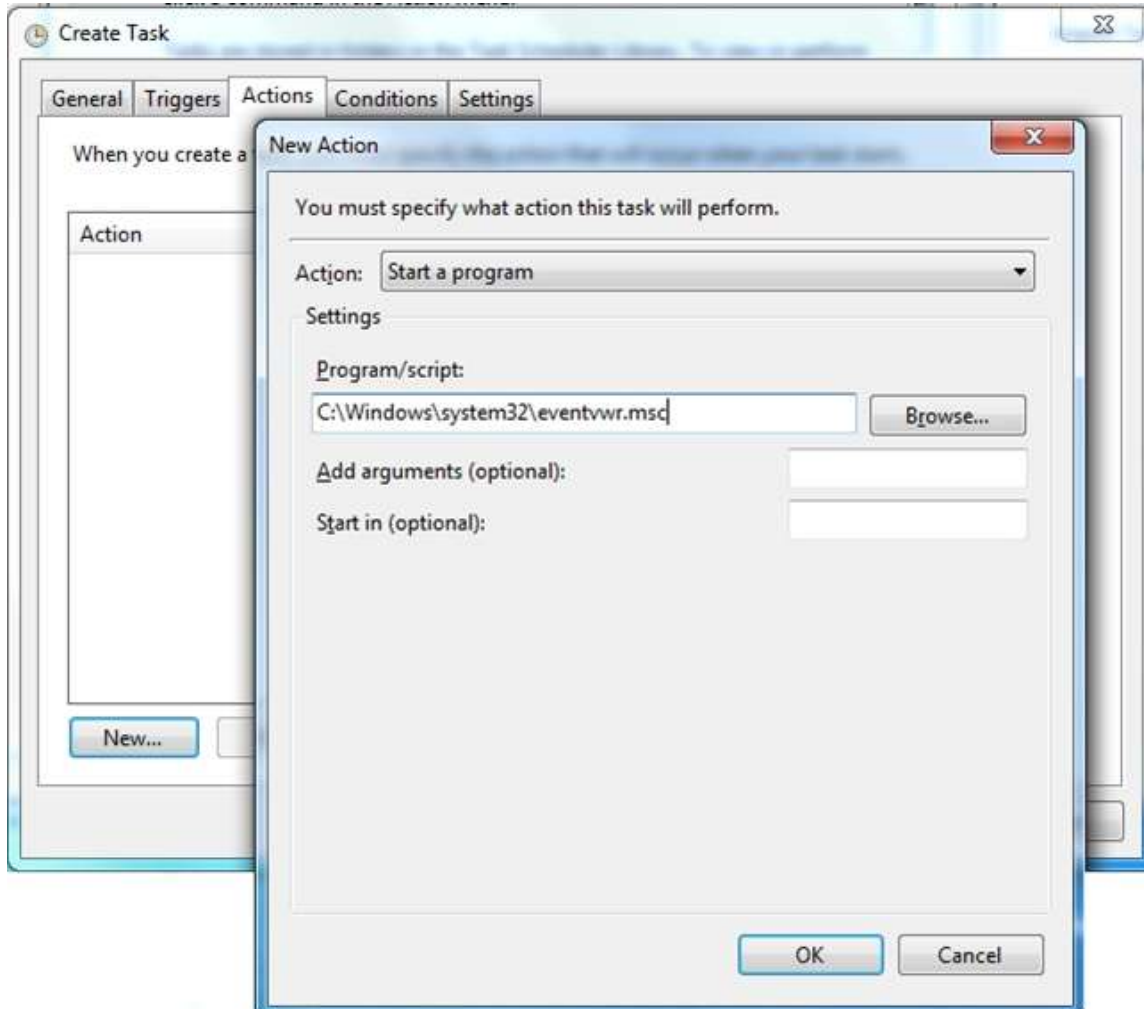
[MD-100 Exam Dumps](#) **[MD-100 Exam Questions](#)** **[MD-100 PDF Dumps](#)** **[MD-100 VCE Dumps](#)**

<https://www.braindump2go.com/md-100.html>

In this menu, under “Begin the task:” select “At log on.” Choose which user you would like the task to run for at log on. For our purposes, Any user.

Configure any of the applicable advanced settings you would like.

After you are finished configuring the new trigger, click OK and then select the “Actions” tab. Click “New” to make a new action.



Choose “Start a program” under the Action menu and then click “Browse” to point to C:\Scripts\Configure.ps1. Click OK to exit out of the Actions menu. The “Conditions” and “Settings” tabs can be left alone.

Click OK on the Create Task menu, and you are finished.

Reference:

<https://www.howtogeek.com/138159/how-to-enable-programs-and-custom-scripts-to-run-at-boot/>