

➤ **Vendor: Microsoft**

➤ **Exam Code: MD-101**

➤ **Exam Name: Managing Modern Desktops**

➤ **New Updated Questions from [Braindump2go](#) (Updated in [August/2021](#))**

Visit Braindump2go and Download Full Version MD-101 Exam Dumps

QUESTION 250

Note: This question is part of a series of questions that present the same scenario. Each question in the series contains a unique solution that might meet the stated goals. Some question sets might have more than one correct solution, while others might not have a correct solution.

After you answer a question in this section, you will NOT be able to return to it. As a result, these questions will not appear in the review screen.

You have a computer that runs Windows 8.1.

Two days ago, you upgraded the computer to Windows 10.

You need to downgrade the computer to Windows 8.1.

Solution: From View update history in the Settings app, you select Uninstall updates.

Does this meet the goal?

- A. Yes
- B. No

Answer: B

QUESTION 251

Note: This question is part of a series of questions that present the same scenario. Each question in the series contains a unique solution that might meet the stated goals. Some question sets might have more than one correct solution, while others might not have a correct solution.

After you answer a question in this section, you will NOT be able to return to it. As a result, these questions will not appear in the review screen.

Your network contains an Active Directory domain. The domain contains member computers that run Windows 8.1 and are enrolled in Microsoft Intune.

You need to identify which computers can be upgraded to Windows 10.

Solution: You install the Microsoft Assessment and Planning Toolkit. From the Microsoft Assessment and Planning Toolkit, you collect inventory data and run the Windows 8.1 Readiness scenario.

Does this meet the goal?

- A. Yes
- B. No

Answer: B

QUESTION 252

You have 100 computers that run Windows 8.1.

You need to identify which computers can be upgraded to Windows 10.

What should you use?

- A. Microsoft Assessment and Planning (MAP) Toolkit
- B. Update Compliance in Azure

[MD-101 Exam Dumps](#) [MD-101 Exam Questions](#) [MD-101 PDF Dumps](#) [MD-101 VCE Dumps](#)

<https://www.braindump2go.com/md-101.html>

- C. Windows Assessment Toolkit
- D. Microsoft Deployment Toolkit (MDT)

Answer: A

Explanation:

<https://www.techielass.com/using-maps-azure-readiness/>

QUESTION 253

You have 100 computers that run Windows 8.1.

You need to create a report that will assess the Windows 10 readiness of the computers.

What should you use?

- A. Windows Assessment and Deployment Kit (Windows ADK)
- B. Microsoft Assessment and Planning (MAP) Toolkit
- C. Windows Deployment Services (WDS)
- D. Microsoft Desktop Optimization Pack (MDOP)

Answer: B

Explanation:

<https://www.techielass.com/using-maps-azure-readiness/>

QUESTION 254

Note: This question is part of a series of questions that present the same scenario. Each question in the series contains a unique solution that might meet the stated goals. Some question sets might have more than one correct solution, while others might not have a correct solution.

After you answer a question in this section, you will NOT be able to return to it. As a result, these questions will not appear in the review screen.

Your company has an Azure Active Directory (Azure AD) tenant named contoso.com and a Microsoft Intune subscription.

Contoso.com contains a user named user1@contoso.com.

You have a computer named Computer1 that runs Windows 8.1.

You need to perform an in-place upgrade of Computer1 to Windows 10.

Solution: You assign an Enterprise Mobility + Security license to User1. You instruct User1 to sign in to Computer1.

Does this meet the goal?

- A. Yes
- B. No

Answer: B

QUESTION 255

You have an Azure Active Directory (Azure AD) tenant named adatum.com that contains two computers named Computer1 and Computer2. The computers run Windows 10 and are members of a group named GroupA.

The tenant contains a user named User1 that is a member of a group named Group1.

You need to ensure that if User1 changes the desktop background on Computer1, the new desktop background will appear when User1 signs in to Computer2.

What should you do?

- A. Create a device configuration profile for Windows 10 and configure the Shared multi-user device settings. Assign the profile to Group1.
- B. Create a device configuration profile for Windows 10 and configure the Shared multi-user device settings. Assign the profile to GroupA.
- C. From the Azure Active Directory admin center, enable Enterprise State Roaming for Group1.
- D. From the Azure Active Directory admin center, enable Enterprise State Roaming for GroupA.

Answer: A

[MD-101 Exam Dumps](#) [MD-101 Exam Questions](#) [MD-101 PDF Dumps](#) [MD-101 VCE Dumps](#)

<https://www.braindump2go.com/md-101.html>

Explanation:

<https://docs.microsoft.com/en-us/mem/intune/configuration/shared-user-device-settings-windows>

<https://docs.microsoft.com/en-us/mem/intune/configuration/device-profile-assign>

QUESTION 256

You have a Microsoft 365 tenant that contains the devices shown in the following table.

Name	Platform	(Azure Active Directory) Azure AD join type	Managed by using Microsoft Intune
Device1	Windows 10	Joined	Yes
Device2	Android	Registered	Yes
Device3	iOS	None	Yes
Device4	Windows 10	None	No
Device5	iPadOS	Registered	No

You need to assign app protection settings to the devices.

What is the minimum number of app protection policies required?

- A. 1
- B. 2
- C. 3
- D. 4
- E. 5

Answer: B

Explanation:

<https://docs.microsoft.com/en-us/mem/intune/apps/app-protection-policies>

QUESTION 257

You have following types of devices enrolled in Microsoft Intune:

- Windows 10
- Android
- iOS

For which types of devices can you create VPN profiles in Microsoft Endpoint Manager?

- A. Windows 10 only
- B. Windows 10 and Android only
- C. Windows 10 and iOS only
- D. Windows 10, Android, and iOS
- E. Android and iOS only

Answer: D

Explanation:

<https://docs.microsoft.com/en-us/mem/intune/configuration/vpn-settings-android>

QUESTION 258

You have a Microsoft 365 tenant that contains the devices shown in the following table.

Name	Member of
Device1	Group1
Device2	Group1
Device3	Group1

The devices are managed by using Microsoft Intune.

You create a compliance policy named Policy1 and assign Policy1 to Group1. Policy1 is configured to mark a device as Compliant only if the device security settings match the settings specified in the policy.

You discover that devices that are not members of Group1 are shown as Compliant.

You need to ensure that only devices that are assigned a compliance policy can be shown as Compliant. All other devices must be shown as Not compliant.

What should you do?

- A. From Endpoint security, configure the Conditional access settings.
- B. From Device compliance, configure the Compliance policy settings.
- C. From Policy1, modify the actions for noncompliance.
- D. From Tenant administration, modify the Diagnostic settings.

Answer: B

Explanation:

<https://docs.microsoft.com/en-us/mem/intune/protect/device-compliance-get-started>

QUESTION 259

You enable controlled folder access in audit mode for several computers that run Windows 10.

You need to review the events audited by controlled folder access.

Which Event Viewer log should you view?

- A. Applications and Services\Microsoft\Windows\Windows Defender\Operational
- B. Windows\Security
- C. Applications and Services\Microsoft\Windows\Known Folders\Operational

Answer: A

Explanation:

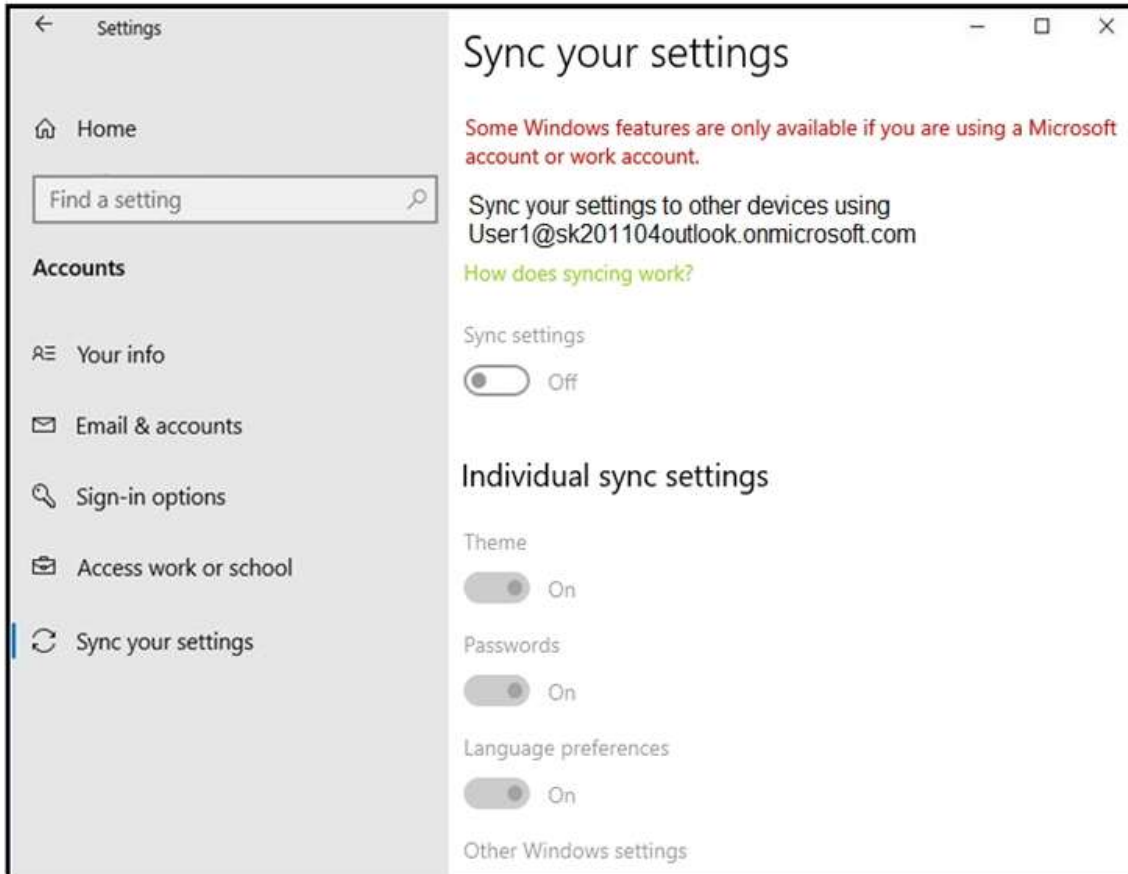
<https://docs.microsoft.com/en-us/microsoft-365/security/defender-endpoint/evaluate-controlled-folder-access?view=o365-worldwide>

QUESTION 260

Your company has a Microsoft 365 tenant.

Users sign in to Windows 10 devices by using their Microsoft 365 account.

On a computer, you open Sync your settings as shown in the exhibit. (Click the Exhibit tab.)



You need to set Sync settings to On.
What should you do?

- A. Enable User Experience Virtualization (UE-V).
- B. Enable Windows Mobility Center.
- C. Disable Windows Hello for Business.
- D. Enable Enterprise State Roaming.

Answer: D

Explanation:

<https://docs.microsoft.com/en-us/azure/active-directory/devices/enterprise-state-roaming-enable>

QUESTION 261

Your network contains an Active Directory domain named contoso.com. The domain contains computers that run Windows 10 and are joined to the domain.
The domain is synced to Microsoft Azure Active Directory (Azure AD).
You create an Azure Log Analytics workspace and deploy the Update Compliance solution.
You need to enroll the computers in the Update Compliance solution.
Which Group Policy setting should you configure?

- A. Specify intranet Microsoft update service location
- B. Allow Telemetry
- C. Configure the Commercial ID
- D. Connected User Experiences and Telemetry

Answer: C

Explanation::

Microsoft uses a unique commercial ID to map information from user computers to your Azure workspace.

[MD-101 Exam Dumps](#) [MD-101 Exam Questions](#) [MD-101 PDF Dumps](#) [MD-101 VCE Dumps](#)

<https://www.braindump2go.com/md-101.html>

Copy your commercial ID key from any of the Windows Analytics solutions you have added to your Windows Portal, and then deploy it to user computers.

Reference:

<https://docs.microsoft.com/en-us/windows/deployment/update/update-compliance-get-started>

QUESTION 262

You have a Microsoft 365 tenant that uses Microsoft Intune.

You use the Company Portal app to access and install published apps to enrolled devices.

From the Microsoft Endpoint Manager admin center, you add a Microsoft Store app.

Which two App information types are visible in the Company Portal?

NOTE: Each correct selection is worth one point.

- A. Information URL
- B. Owner
- C. Privacy URL
- D. Developer

Answer: CD

QUESTION 263

You have a Microsoft 365 tenant that contains the objects shown in the following table.

Name	Type
Admin1	User
Group1	Microsoft 365 group
Group2	Distribution group
Group3	Mail-enabled security group
Group4	Security group

In the Microsoft Endpoint Manager admin center, you are creating a Microsoft 365 Apps app named App1. To which objects can you assign App1?

- A. Admin1, Group3, and Group4 only
- B. Group1, Group2, Group3, and Group4 only
- C. Admin1, Group1, Group2, Group3, and Group4
- D. Group1, Group3, and Group4 only
- E. Group3 and Group4 only

Answer: D

Explanation:

<https://docs.microsoft.com/en-us/mem/intune/apps/apps-deploy>

<https://docs.microsoft.com/en-us/microsoft-365/admin/create-groups/compare-groups?view=o365-worldwide>

QUESTION 264

You use Windows Admin Center to remotely administer computers that run Windows 10.

When connecting to Windows Admin Center, you receive the message shown in the following exhibit.

This site is not secure

This might mean that someone's trying to fool you or steal any info you send to the server. You should close this site immediately.

 [Go to your Start page](#)

Details

Your PC doesn't trust this website's security certificate.

Error Code: DLG_FLAGS_INVALID_CA

[Go on to the webpage](#) (Not recommended)

You need to prevent the message from appearing when you connect to Windows Admin Center. To which certificate store should you import the certificate?

- A. Client Authentication Issuers
- B. Trusted Root Certification Authorities
- C. Personal

Answer: C

Explanation:

<https://social.technet.microsoft.com/Forums/en-US/6b3abb8e-007e-4047-bd30-2946b9c3aaba/windows-admin-center-three-questions-login-and-certs?forum=ws2016>

QUESTION 265

Drag and Drop Question

You have a Microsoft Deployment Toolkit (MDT) deployment share that has a path of D:\MDTShare.

You need to add a feature pack to the boot image.

Which three actions should you perform in sequence? To answer, move the appropriate actions from the list of actions to the answer area and arrange them in the correct order.

Actions

- Modify the Windows PE properties of the deployment share.
- Modify the General properties of the deployment share.
- Copy the feature pack to D:\MDTShare\Packages.
- Copy the feature pack to D:\MDTShare\Tools\x86.
- Update the deployment share.

Answer Area



Answer:

Actions

- Modify the General properties of the deployment share.
- Copy the feature pack to D:\MDTShare\Packages.

Answer Area

- Modify the Windows PE properties of the deployment share.
- Copy the feature pack to D:\MDTShare\Tools\x86.
- Update the deployment share.

Explanation:

<https://docs.microsoft.com/en-us/windows/deployment/deploy-windows-mdt/deploy-a-windows-10-image-using-mdt>

QUESTION 266

Hotspot Question

You create a Windows Autopilot deployment profile.

You need to configure the profile settings to meet the following requirements:

Automatically enrol new devices and provision system apps without requiring end-user authentication.

Include the hardware serial number in the computer name.

Which two settings should you configure? To answer, select the appropriate settings in the answer area.

NOTE: Each correct selection is worth one point.

Answer Area**Create profile ...**

Windows PC

✓ Basics **2 Out-of-box experience (OOBE)** 3 Assignments 4 Review + create

Configure the out-of-box experience for your Autopilot devices

Deployment mode *	①	User-Driven	▼
Join to Azure AD as *	①	Azure AD joined	▼
Microsoft Software License Terms	①	Show	Hide
i important information about hiding license terms			
Privacy settings	①	Show	Hide
i The default value for diagnostic data collection has changed for devices running Windows 10, version 1903 and later. Learn more			
Hide change account options	①	Show	Hide
User account type	①	Administrator	Standard
Allow White Glove OOBE	①	No	Yes
Language (Region)	①	Operating system default	▼
Automatically configure keyboard	①	No	Yes
Apply device name template	①	No	Yes

Answer:

Answer Area**Create profile ...**

Windows PC

✓ Basics **2 Out-of-box experience (OOBE)** 3 Assignments 4 Review + create

Configure the out-of-box experience for your Autopilot devices

Deployment mode *	①	User-Driven	▼
Join to Azure AD as *	①	Azure AD joined	▼
Microsoft Software License Terms	①	Show	Hide
i important information about hiding license terms			
Privacy settings	①	Show	Hide
i The default value for diagnostic data collection has changed for devices running Windows 10, version 1903 and later. Learn more			
Hide change account options	①	Show	Hide
User account type	①	Administrator	Standard
Allow White Glove OOBE	①	No	Yes
Language (Region)	①	Operating system default	▼
Automatically configure keyboard	①	No	Yes
Apply device name template	①	No	Yes

Explanation:<https://docs.microsoft.com/en-us/mem/autopilot/profiles>**QUESTION 267**

Drag and Drop Question

You have a Microsoft Deployment Toolkit (MDT) deployment share named DS1.

You import a Windows 10 image to DS1.

You have an executable installer for an application named App1.

You need to ensure that App1 will be installed for all the task sequences that deploy the image.

Which three actions should you perform in sequence? To answer, move the appropriate actions from the list of actions to the answer area and arrange them in the correct order.

[MD-101 Exam Dumps](#) [MD-101 Exam Questions](#) [MD-101 PDF Dumps](#) [MD-101 VCE Dumps](#)<https://www.braindump2go.com/md-101.html>

Actions**Answer Area**

Answer:

Actions**Answer Area****Explanation:**

<https://docs.microsoft.com/en-us/windows/deployment/deploy-windows-mdt/deploy-a-windows-10-image-using-mdt#step-4-add-an-application>

QUESTION 268

Hotspot Question

You have a Microsoft 365 tenant.

You have a Windows 10 update ring named Policy1 as shown in the following exhibit.

Basics

Name	Policy1
Description	--

Update ring settings

Update settings

Servicing channel	Semi-Annual Channel
Microsoft product updates	Allow
Windows drivers	Block
Quality update deferral period (days)	0
Feature update deferral period (days)	0
Set feature update uninstall period (2–60 days)	14

A Windows 10 Feature update deployment named Policy2 is configured as shown in the following exhibit.

Deployment settings

Name	Policy2
Description	--
Feature deployment settings	
Name	Windows 10 2004

You have devices enrolled in Microsoft Intune as shown in the following table.

Name	Windows 10 edition	Policy applied
Device1	Windows 10 Enterprise, version 20H2	Policy1
Device2	Windows 10 Pro, version 2004	Policy2
Device3	Windows 10 Enterprise, version 20H2	Policy2

For each of the following statements, select Yes if the statement is true. Otherwise, select No.
 NOTE: Each correct selection is worth one point.

Answer Area

Statements	Yes	No
Device1 will install feature updates twice a year.	<input type="radio"/>	<input type="radio"/>
Device2 will install feature update 20H2.	<input type="radio"/>	<input type="radio"/>
Device3 will be downgraded to feature update 2004.	<input type="radio"/>	<input type="radio"/>

Answer:

Answer Area

Statements	Yes	No
Device1 will install feature updates twice a year.	<input checked="" type="radio"/>	<input type="radio"/>
Device2 will install feature update 20H2.	<input checked="" type="radio"/>	<input type="radio"/>
Device3 will be downgraded to feature update 2004.	<input type="radio"/>	<input checked="" type="radio"/>

Explanation:

<https://docs.microsoft.com/en-us/mem/intune/protect/windows-10-update-rings>

QUESTION 269

Hotspot Question

You have a Microsoft 365 tenant that uses Microsoft Intune to manage the devices shown in the following table.

Name	Platform
Device1	Windows 10
Device2	Android device administrator
Device3	Android Enterprise
Device4	iOS
Device5	iPadOS

You need to deploy a compliance solution that meets the following requirements:

Marks the devices as Not Compliant if they do not meet compliance policies Remotely locks noncompliant devices

What is the minimum number of compliance policies required, and which devices support the remote lock action? To answer, select the appropriate options in the answer area.

NOTE: Each correct selection is worth one point.

Answer Area

Minimum number of compliance policies required:

▼
1
2
3
4
5

Devices that support the remote lock action:

▼
Device1 only
Device2 and Device3 only
Device4 and Device5 only
Device2, Device3, Device4, and Device5
Device1, Device2, Device3, Device4, and Device5

Answer:**Answer Area**

Minimum number of compliance policies required:

▼
1
2
3
4
5

Devices that support the remote lock action:

▼
Device1 only
Device2 and Device3 only
Device4 and Device5 only
Device2, Device3, Device4, and Device5
Device1, Device2, Device3, Device4, and Device5

Explanation:

<https://docs.microsoft.com/en-us/mem/intune/protect/device-compliance-get-started>
<https://docs.microsoft.com/en-us/mem/intune/protect/actions-for-noncompliance>

QUESTION 270

Hotspot Question

You have a Microsoft 365 tenant that uses Microsoft Intune.

From the Microsoft Endpoint Manager admin center, you plan to create a baseline to monitor the Startup score and the App reliability score of enrolled Windows 10 devices.

You need to identify which tool to use to create the baseline and the minimum number of devices required to create the baseline.

What should you identify? To answer, select the appropriate options in the answer area.

NOTE: Each correct selection is worth one point.

Answer Area

Tool to use:

	▼
Workbooks	
Log Analytics	
Endpoint analytics	
Security baselines	

Minimum number of devices:

	▼
1	
5	
10	
25	

Answer:

Answer Area

Tool to use:

	▼
Workbooks	
Log Analytics	
Endpoint analytics	
Security baselines	

Minimum number of devices:

	▼
1	
5	
10	
25	

Explanation:

<https://docs.microsoft.com/en-us/mem/analytics/scores#understanding-scores>

QUESTION 271

Hotspot Question

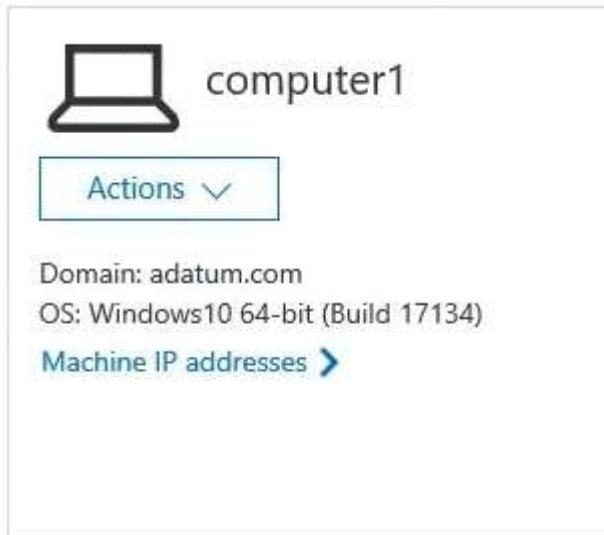
Your company uses Microsoft Defender Advanced Threat Protection (Microsoft Defender ATP). Microsoft Defender ATP includes the machine groups shown in the following table.

[MD-101 Exam Dumps](#) [MD-101 Exam Questions](#) [MD-101 PDF Dumps](#) [MD-101 VCE Dumps](#)

<https://www.braindump2go.com/md-101.html>

Rank	Name	Members
1	Group1	Tag Equals demo And OS In Windows 10
2	Group2	Tag Equals demo
3	Group3	Domain Equals adatum.com
4	Group4	Domain Equals adatum.com And OS In Windows 10
5	Group5	Name starts with COMP
Last	Ungrouped machines (default)	Not applicable

You onboard a computer to Microsoft Defender ATP as shown in the following exhibit.



What is the effect of the Microsoft Defender ATP configuration? To answer, select the appropriate options in the answer area.

NOTE: Each correct selection is worth one point.

Answer Area

Computer1 will be a member of:

▼

Group3 only

Group4 only

Grou5 only

Group3, Group4, and Group5 only

If you add the tag demo to Computer1, Computer1 will be a member of:

▼

Group1 only

Group2 only

Group1 and Group2 only

Group1, Group2, Group3, Group4, and Group5

Answer:

Answer Area

Computer1 will be a member of:

	▼
Group3 only	
Group4 only	
Grou5 only	
Group3, Group4, and Group5 only	

If you add the tag demo to Computer1, Computer1 will be a member of:

	▼
Group1 only	
Group2 only	
Group1 and Group2 only	
Group1, Group2, Group3, Group4, and Group5	

QUESTION 272

Hotspot Question

You have a Microsoft 365 E5 tenant that contains the users shown in the following table.

Name	Role
User1	Global admin
User2	Application admin
User3	None
User4	None

You provision the private store in Microsoft Store for Business and assign Microsoft Store for Business roles to the users as shown in the following table.

Name	Role
User2	Admin
User3	Purchaser
User4	Basic Purchaser

You configure the following Shopping behavior settings for the Microsoft Store for Business:

Allow users to shop: Yes

Make everyone a Basic Purchaser: Off

Allow app requests: On

Shop offline apps: Off

For each of the following statements, select Yes if the statement is true. Otherwise, select No.

NOTE: Each correct selection is worth one point.

Answer Area

Statements	Yes	No
User1 can assign the Microsoft Store for Business Admin role to User4.	<input type="radio"/>	<input type="radio"/>
When User4 requests an app from the Microsoft Store for Business, User2 will be notified.	<input type="radio"/>	<input type="radio"/>
User3 can assign apps from the Microsoft Store for Business to User2.	<input type="radio"/>	<input type="radio"/>

Answer:**Answer Area**

Statements	Yes	No
User1 can assign the Microsoft Store for Business Admin role to User4.	<input checked="" type="radio"/>	<input type="radio"/>
When User4 requests an app from the Microsoft Store for Business, User2 will be notified.	<input checked="" type="radio"/>	<input type="radio"/>
User3 can assign apps from the Microsoft Store for Business to User2.	<input checked="" type="radio"/>	<input type="radio"/>

Explanation:<https://docs.microsoft.com/en-us/microsoft-store/roles-and-permissions-microsoft-store-for-business><https://docs.microsoft.com/en-us/microsoft-store/acquire-apps-microsoft-store-for-business>