

- **Vendor:** Microsoft
- **Exam Code:** MS-220
- **Exam Name:** Troubleshooting Microsoft Exchange Online
- **New Updated Questions from** [Braindump2go](#)
- **(Updated in** [June/2022](#)**)**

[Visit Braindump2go and Download Full Version MS-220 Exam Dumps](#)

Question:43

A company uses Exchange Online. The company configures the following retention tags:

- Inbox: Delete in 365 days.
- Deleted Items: Delete in 30 days.

A user receives an email on April 27, 2022 and deletes the email on May 28, 2022. You need to determine the retention period of the email. On which date will the email expire?

- A. May 27, 2022
- B. May 28, 2022
- C. June 27, 2022
- D. April 27, 2023

Answer: D

Question:44

HOTSPOT

A company uses Exchange Online. The company configures a shared mailbox named Shared for delegated access.

Delegates report that emails from February 10, 2022 through February 15, 2022 are missing from the shared mailbox.

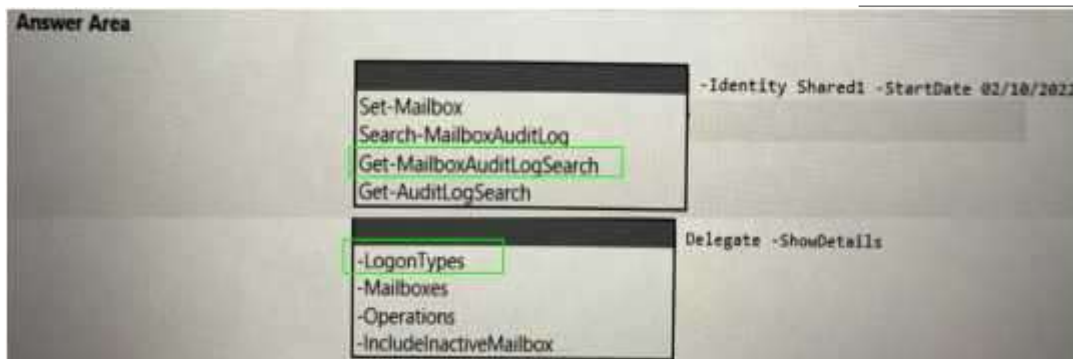
You need to review the audit logs for the shared mailbox.

How should you complete the command? To answer, select the appropriate options in the answer area.

NOTE: Each correct selection is worth one point.



Answer:



Question:45

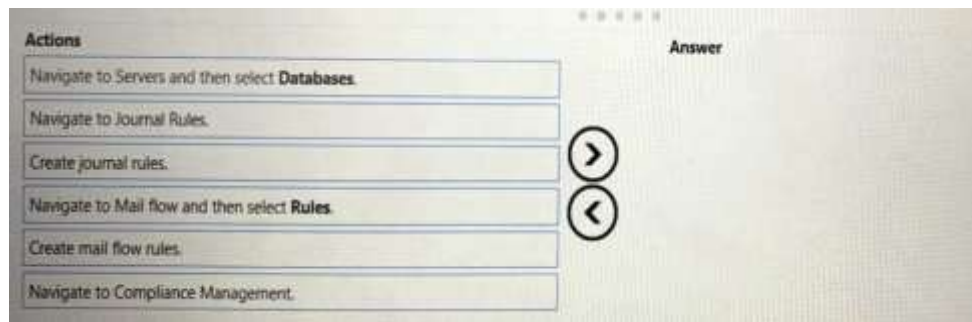
DRAG DROP

A company uses a Microsoft Exchange Server 2019 hybrid environment.

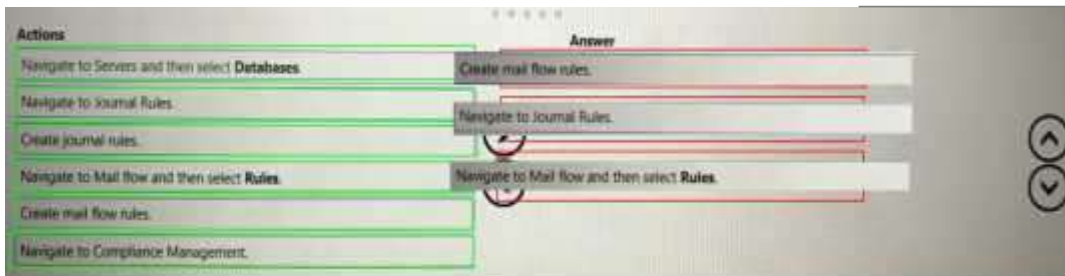
You observe that emails sent from the on-premises users are being journaled. However, the emails from users in Exchange Online are not being journaled.

You need to resolve the issue. You open the Classic Exchange admin center.

Which three actions should you perform in sequence? To answer, move the appropriate actions from the list of actions to the answer area and arrange them in the correct order.



Answer:



Question:46

A company uses Exchange Online. The company enables Microsoft Office 365 Message Encryption (OME).

A user named User1 sends an encrypted email to a dynamic distribution group named DDG1. A user named User2 receives the email from DDG1 but is unable to open the encrypted email.

You need to resolve the issue.

What should you do?

- A. Configure the scope of the address book policy to include DDG1 as a member.
- B. Configure the MIME types that are associated with the default Microsoft Outlook Web App policy.
- C. Instruct User2 to upgrade their internet browser.
- D. Instruct User1 to send the encrypted email to User2.

Answer: B

Question:47

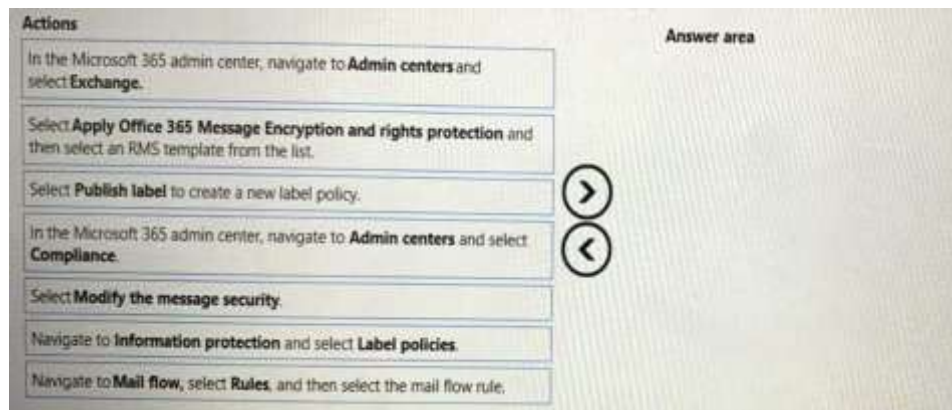
DRAG DROP

A company uses Exchange Online and deploys Office 365 Message Encryption (OME).

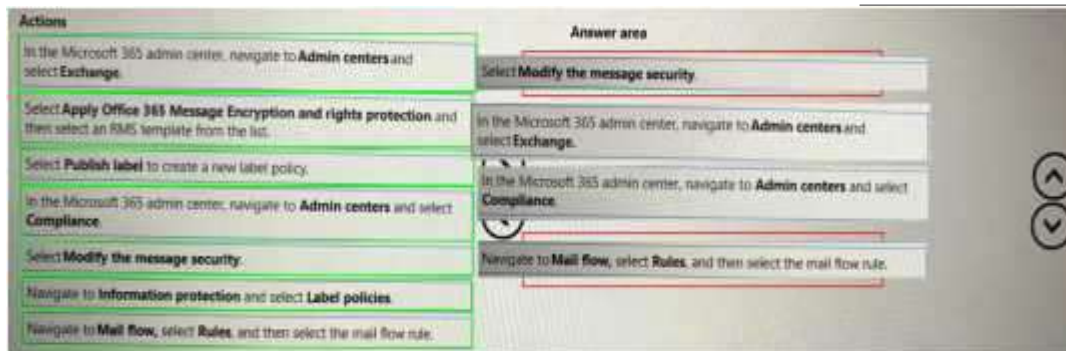
Users do not experience the seamless OME capabilities when they receive encrypted email. They continue to receive encrypted email with the previous HTML attachment format.

You need to ensure that users stop receiving encrypted emails with the old format.

Which four actions should you perform in sequence? To answer, move the appropriate actions from the list of actions to the answer area and arrange them in the correct order.



Answer:



Question:48

HOTSPOT

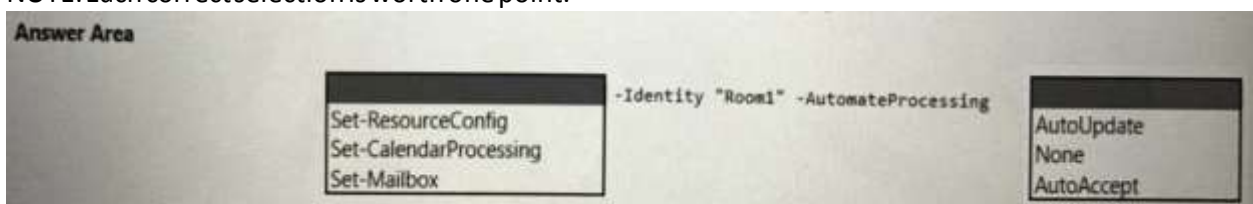
A company uses Exchange Online. The company configures a room mailbox named Room1 to use resource delegates.

Resource delegates report that they are not able to approve meeting requests for Room1.

You need to ensure that resource delegates receive meeting request emails.

How should you complete the command? To answer, select the appropriate options in the answer area.

NOTE: Each correct selection is worth one point.



Answer:



Question:49

A company uses Exchange Online. The company configures a transport rule that applies a disclaimer to all emails from the Internet.

Users receive calendar sharing invitations from external senders. Users report that they are unable

[MS-220 Exam Dumps](#) [MS-220 Exam Questions](#) [MS-220 PDF Dumps](#) [MS-220 VCE Dumps](#)

<https://www.braindump2go.com/ms-220.html>

to open the calendar from a sharing invitation in Outlook

on the web.

You need to resolve the issue.

What should you do?

- A. Change the fallback action of the transport rule to Ignore.
- B. Set the value of the ApplyHtmlDisclaimerTextLocation parameter to Prepend.
- C. Change the fallback action of the transport rule to Reject.
- D. Set the value of the ApplyHtmlDisclaimerTextLocation parameter to Append.

Answer: A

Question: 50

A company uses Exchange Online.

A user named User1 schedules a meeting with a conference room mailbox named Conf1. Conf1 is already reserved for another meeting but does not automatically decline the conflicting meeting request.

You need to ensure that conflicting meeting requests sent to Conf1 are declined.

What should you do?

- A. Remove User1 from the RequestInPolicy property list.
- B. Set the value of the AddNewRequestsTentatively property for the room mailbox to True
- C. Remove User1 from the RequestOutOfPolicy property list.
- D. Remove User1 from the BookInPolicy property list.

Answer: A

Question: 51

A company uses Exchange Online. The company configures a transport rule that appends a disclaimer to emails from external senders.

Users report that they are unable to accept calendar invitations from external senders.

You need to ensure that users can accept calendar invitations.

What are two possible ways to achieve this goal? Each correct answer presents a complete solution.

NOTE: Each correct selection is worth one point.

- A. Configure an exception on the transport rule to skip calendar invites.
- B. Change the fallback action on the transport rule to ignore.
- C. Change the fallback action on the transport rule to reject.
- D. Select the Stop processing more rules option on the transport rule.

Answer: AC

Question: 52

[MS-220 Exam Dumps](#) [MS-220 Exam Questions](#) [MS-220 PDF Dumps](#) [MS-220 VCE Dumps](#)

<https://www.braindump2go.com/ms-220.html>

HOTSPOT

A company uses Exchange Online. The company configures the default access level for the Exchange ActiveSync organization setting to Block.

A user named User1 reports that they are unable to synchronize their mobile device with Exchange after performing a factory reset on the mobile device.

You need to ensure that User1 can synchronize email on their mobile device.

How should you complete the command? To answer, select the appropriate options in the answer area.

NOTE: Each correct selection is worth one point.

Answer Area

Command	Parameter	Value
Set-ActiveSyncDeviceAccessRule	-Identity User1	
Set-ActiveSyncDeviceAutoblockThreshold		
Set-CasMailbox		
Set-Mailbox		

Parameter	Value
Allowlrda	@{add="F2BC83483CCA6"}
ActiveSyncAllowedDeviceIDs	
ActiveSyncBlockedDeviceIDs	
ResetAutoBlockedDevices	

Answer:

Answer Area

Command	Parameter	Value
Set-ActiveSyncDeviceAccessRule	-Identity User1	
Set-ActiveSyncDeviceAutoblockThreshold		
Set-CasMailbox		
Set-Mailbox		

Parameter	Value
Allowlrda	@{add="F2BC83483CCA6"}
ActiveSyncAllowedDeviceIDs	
ActiveSyncBlockedDeviceIDs	
ResetAutoBlockedDevices	

Question: 53

HOTSPOT

A company uses Exchange Online. The Exchange ActiveSync access setting is configured to quarantine.

A user named User1 removes a mobile device from Exchange.

When User1 tries to connect the same device to Exchange, the device is not quarantined.

You need to ensure that the device is quarantined.

How should you complete the command? To answer, select the appropriate options in the answer area.

NOTE: Each correct selection is worth one point.

Answer Area

Command	Parameter	Value
Set-Mailbox	-Identity "User1"	
Set-User		
Set-ClientAccessRule		
Set-CASMailbox		

Parameter	Value
-ActiveSyncBlockedDeviceIDs	\$null
-ActiveSyncAllowedDeviceIDs	
-ActiveSyncMailboxPolicy	
-ActiveSyncEnabled	

Answer:

Answer Area

Command	Parameter	Value
Set-Mailbox	-Identity "User1"	
Set-User		
Set-ClientAccessRule		
Set-CASMailbox		

Parameter	Value
-ActiveSyncBlockedDeviceIDs	\$null
-ActiveSyncAllowedDeviceIDs	
-ActiveSyncMailboxPolicy	
-ActiveSyncEnabled	

Question: 54

A company uses Exchange Online in a multi-geo environment. A user named User1 has delegate permission to the mailbox of a user named User2. Auditing is enabled for the organization. All users are assigned Microsoft 365 E5 licenses.

You discover that all mailbox access to User2 is being logged. However, security policies mandate that only mailbox access from administrators should be audited. You need to ensure that mailbox audit logs conform to the security requirements.

Solution: Run the following Command: Set-Mailbox -Identity User2 -DefaultAuditSet Delegate,Owner
Does the solution meet the goal?

- A. Yes
- B. No

Answer: A

Question: 55

A company uses Exchange Online in a multi-geo environment. A user named User1 has delegate permission to the mailbox of a user named User2. Auditing is enabled for the organization. All users are assigned Microsoft 365 E5 licenses.

You discover that all mailbox access to User2 is being logged. However, security policies mandate that only mailbox access from administrators should be audited. You need to ensure that mailbox audit logs conform to the security requirements.

Solution: Run the following Command: Set-Mailbox -Identity User1 -AuditEnabled \$false
Does the solution meet the goal?

- A. Yes
- B. No

Answer: B

Question: 56

A company uses Exchange Online.

A user reports that they did not receive an email from an external sender. You perform a message trace and observe the following in the message header SFV: BLK

You need to resolve the issue.

Solution: Remove the sender's email address from the recipient's block list. Does the solution meet the goal?

- A. Yes
- B. No

Answer: B

Question: 57

A company uses Exchange Online.

A user reports that they did not receive an email from an external sender. You perform a message trace and observe the following in the message header SFV: BLK

You need to resolve the issue.

Solution: Remove the recipient's domain from the domain block list in the anti-spam policy.

Does the solution meet the goal?

A. Yes

B. No

Answer: B

Question: 58

A company uses Exchange Online.

A user reports that they did not receive an email from an external sender. You perform a message trace and observe the following in the message header

SFV: BLK

You need to resolve the issue.

Solution: Add the sender's email address to the recipient's allowed list

Does the solution meet the goal?

A. Yes

B. No

Answer: B

Question: 59

A company uses a Microsoft Exchange Server 2019 hybrid environment.

You migrate an Exchange Server mailbox to Exchange Online.

You observe that the data consistency score (DCS) indicates the Investigate status.

You need to troubleshoot the reason for the DCS status.

Which cmdlet should you use?

A. Get-MailboxRestoreRequestStatistics

B. Get-SyncRequestStatistics

C. Get-MoveRequestStatistics

D. Get-MailboxImportRequestStatistics

Answer: B

Question: 60

A company uses a Microsoft Exchange Server 2019 hybrid environment. Users hosted on Exchange Online report that they cannot view Exchange Server users' free/busy information. Exchange Online users can view free/busy information for other Exchange Online users. Exchange Server users can view free/busy information for other Exchange Server users. You need to troubleshoot why Exchange Online users cannot view free/busy information for Exchange Server users. What are two possible ways to achieve this goal? Each correct answer presents a complete solution. NOTE: Each correct selection is worth one point.

- A. Run the Get-organization Relationship cmdlet in Exchange Online.
- B. Run a connectivity test from the Microsoft Remote Connectivity Analyzer.
- C. Run the install-FreeBusyFolder cmdlet on the Exchange Server.
- D. Run the Get-Exchangeserver | f1 internet web Proxy cmdlet on the Exchange Server.

Answer: BD

Question: 61

HOTSPOT

A company uses Exchange Online. The company creates dynamic distribution groups for managers of each department.

A manager reports that some of the users in their department are not receiving emails when sending messages to a dynamic distribution group named Group1.

You need to provide a membership list of Group1 to the manager.

How should you complete the command? To answer, select the appropriate options in the answer area.

NOTE: Each correct selection is worth one point.

Answer Area

```
$g = Get-DynamicDistributionGroup -Identity "Group1"
```

Get-DistributionGroup	-Filter	(\$g.	LdapRecipientFilter
Get-DistributionGroupMember	-OrganizationalUnit		RecipientContainer
Get-Recipient	-RecipientPreviewFilter		RecipientFilter

Answer:

Answer Area

```
$g = Get-DynamicDistributionGroup -Identity "Group1"
```

Get-DistributionGroup	-Filter	(\$g.	LdapRecipientFilter
Get-DistributionGroupMember	-OrganizationalUnit		RecipientContainer
Get-Recipient	-RecipientPreviewFilter		RecipientFilter

Question: 62

A company uses Exchange Online.

[MS-220 Exam Dumps](#) [MS-220 Exam Questions](#) [MS-220 PDF Dumps](#) [MS-220 VCE Dumps](#)

<https://www.braindump2go.com/ms-220.html>

A user named User1

receives a notification that their mailbox is full. You verify that User1's mailbox size is 49.8 GB.

You need to increase the maximum size of User1's mailbox to 99 GB.

Which two actions should you perform? Each correct answer presents part of the solution. NOTE: Each correct selection is worth one point.

- A. Assign an Exchange Online Plan 1 license to User1.
- B. Run the set-Mailbox cmdlet.
- C. Run the Get-MSolsubscription cmdlet.
- D. Assign an Exchange Online Plan 2 license to User1.

Answer: AC

Question: 63

DRAG DROP

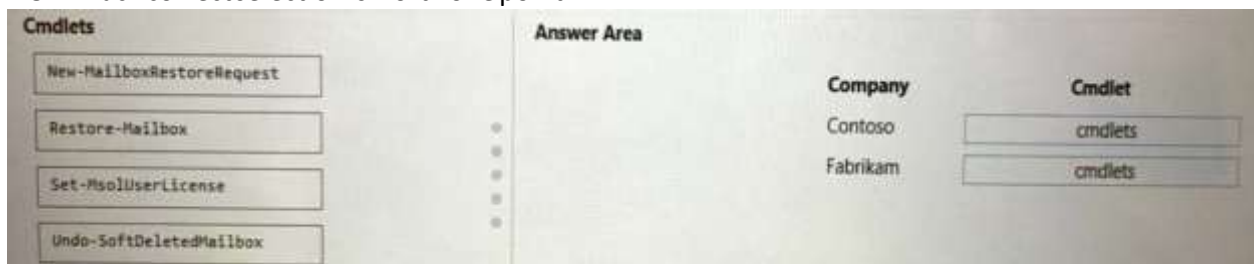
A company named Contoso, Ltd. uses Exchange Online. A company named Fabrikam, Inc. uses a Microsoft Exchange Server 2019 hybrid environment.

A mailbox at Contoso is deleted because the Azure Active Directory (Azure AD) user account associated with the mailbox is soft-deleted from Azure AD. A mailbox at Fabrikam is soft-deleted in Exchange Online and the Azure AD user account associated with the mailbox is hard-deleted from Azure AD.

You need to restore the mailboxes for each company. If possible, you must associate the restored mailbox with the original Azure AD user account.

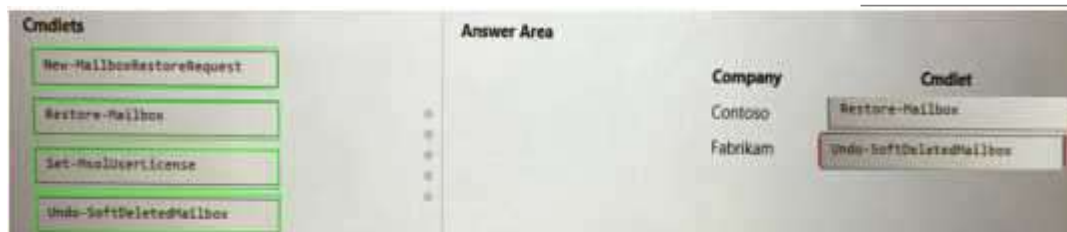
Which cmdlets should you run? To answer, drag the appropriate cmdlets to the correct companies. Each cmdlet may be used once, more than once, or not at all. You may need to drag the split bar between panes or scroll to view content.

NOTE: Each correct selection is worth one point.



Company	Cmdlet
Contoso	Restore-Mailbox
Fabrikam	Undo-SoftDeletedMailbox

Answer:



Company	Cmdlet
Contoso	Restore-Mailbox
Fabrikam	Undo-SoftDeletedMailbox

Question: 64

A university uses Exchange Online.

[MS-220 Exam Dumps](#) [MS-220 Exam Questions](#) [MS-220 PDF Dumps](#) [MS-220 VCE Dumps](#)

<https://www.braindump2go.com/ms-220.html>

Students must be able to find email addresses for other students in the university's address book. You need to prevent students from finding faculty email addresses in the address book.

You create and assign an address book policy (ABP).

Which cmdlet should you use to enable ABP routing?

- A. Set-FrontendTransportService
- B. Set-TransportService
- C. Set-MailboxTransportService
- D. Set-TransportConfig

Answer: D

Question: 65

A company uses Exchange Online.

Users report issues synchronizing their mobile devices with Exchange.

You need to troubleshoot the issue.

Which cmdlet should you run?

- A. Get-MobileDeviceStatistics
- B. Get-ActiveSyncDevice
- C. Get-MobileDeviceMailboxPolicy
- D. Get-ActiveSyncDeviceClass

Answer: B