

- **Vendor:** Fortinet
- **Exam Code:** NS0-527
- **Exam Name:** NetApp Certified Implementation Engineer, Data Pro
- **New Updated Questions from** [Braindump2go](#)
- **(Updated in** [October/2022](#)**)**

Visit Braindump2go and Download Full Version NS0-527 Exam Dumps

Question:1

Your manager requires you to protect a production SVM called svm01 by using SVM-DR. Your manager insists that all configuration and data LUNs be replicated to the DR cluster. The destination SVM should be called drsvm01. You set up an SVM-DR relationship between the clusters, specifying that the – identity- preserve option is set to true. After the initial replication completes, you discover that the iSCSI LIF configuration has not been replicated to drsvm01.

What should you do to solve this problem?

- A. Run the relationship a second time and check the configuration again.
- B. Manually create and configure the iSCSI LIFs on drsvm01.
- C. Set up a new relationship without using the -identity-preserve option.
- D. Add the FC protocol to the destination and configure the FC LIFs.

Answer: C

Explanation:

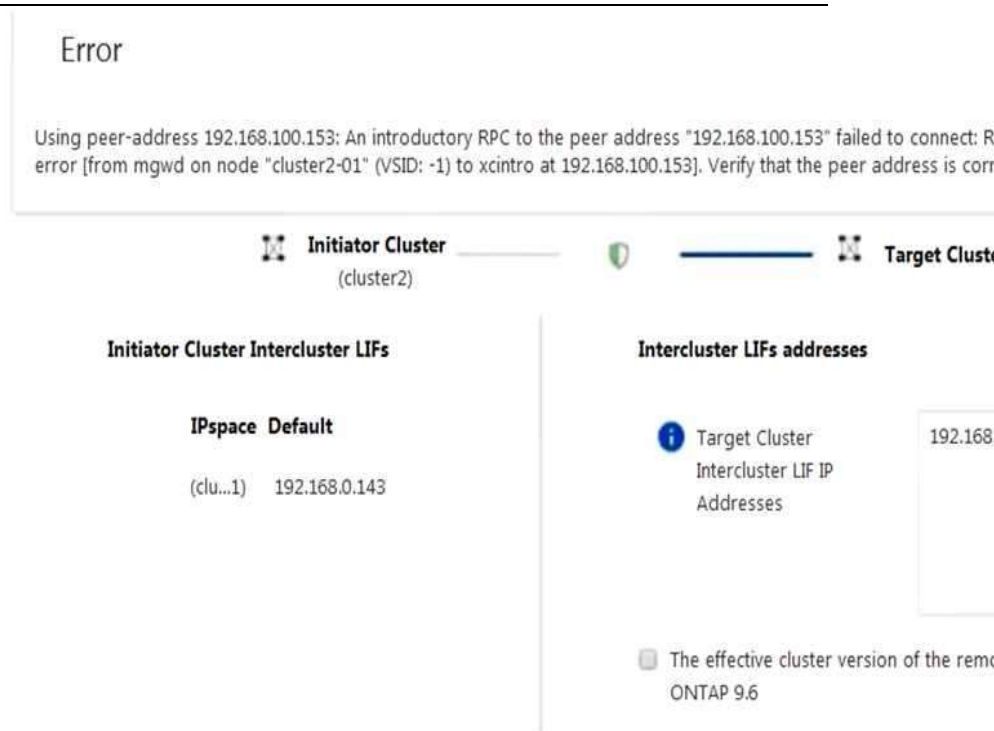
Question:2

Click the Exhibit button.

[NS0-527 Exam Dumps](#) [NS0-527 Exam Questions](#)

[NS0-527 PDF Dumps](#) [NS0-527 VCE Dumps](#)

<https://www.braindump2go.com/ns0-527.html>



You are configuring cluster peering from cluster2 to cluster1 on your ONTAP 9.7 clusters using ONTAP System Manager. You are given the details shown below to set up the cluster peer relationship. You want to determine why the peering has failed.

Cluster2 intercluster LIF IP: 192.168.0.143 Subnet: 255.255.255.0 Port: e0e passphrase: netapp1234
Cluster1 intercluster LIF IP: 192.168.0.153 Subnet: 255.255.255.0 Port: e0e passphrase: netapp1234

Referring to the exhibit, which statement is correct?

- A. The Source Cluster IP is incorrect.
- B. The Target Cluster Passphrase is incorrect.
- C. The Target Cluster IP is incorrect.
- D. The Source Cluster Passphrase is incorrect.

Answer: CD

Explanation:

Question:3

You are the administrator of your company's ONTAP clusters. You are asked to provide a disaster recovery solution between your primary AFF A400 cluster and your FAS2720 cluster with the highest

[NS0-527 Exam Dumps](#) [NS0-527 Exam Questions](#)

[NS0-527 PDF Dumps](#) [NS0-527 VCE Dumps](#)

<https://www.braindump2go.com/ns0-527.html>

possible availability at the lowest possible price.

In this scenario, which product will satisfy this requirement?

[NS0-527 Exam Dumps](#) [NS0-527 Exam Questions](#)

[NS0-527 PDF Dumps](#) [NS0-527 VCE Dumps](#)

<https://www.braindump2go.com/ns0-527.html>

- A. MetroCluster
- B. SM-S
- C. SnapMirror
- D. SVM-DR

Answer: A

Explanation:

Reference: <https://blog.netapp.com/disaster-recovery-solution-for-enterprise-apps/>

Question:4

Application data needs to be replicated between two FAS9000 clusters running ONTAP 9.7 for DR purposes only. The application has 50 data volumes to be replicated concurrently. You also require that the application can run from the DR site should the production site suffer a disaster.

[NS0-527 Exam Dumps](#) [NS0-527 Exam Questions](#)

[NS0-527 PDF Dumps](#) [NS0-527 VCE Dumps](#)

<https://www.braindump2go.com/ns0-527.html>

Data Protection Cluster Limits		Scope:
		HA Pair
Maximum number of NDMP sessions		36
Maximum number of data protection (DP) mirrors and/or SnapVault relationships		2,000
Maximum number of data protection (DP) mirrors and/or SnapVault relationships for FabricPool		N/A
Maximum number of load sharing (LS) mirrors		N/A
Maximum number of concurrent Snap Mirror or SnapVault transfers		200
Maximum fan-out from source for DP mirror		N/A
Maximum fan-out from source for LS mirror		N/A
Maximum number of clusters that can be peered		255
Maximum Number of constituent volumes in a SnapMirror relationship		1,000
Maximum number of concurrent NDAS relationship transfers		64
Maximum number of SnapMirror Synchronous relationships		40

Referring to the exhibit, what would you use to satisfy the requirements?

- A. SnapVault backups can be used to replicate all the application volumes.
- B. Load sharing can be used to concurrently replicate the data between both systems.
- C. SnapMirror Synchronous can be used to replicate all the application volumes.
- D. SnapMirror can be used to replicate all the data volumes concurrently.

[NS0-527 Exam Dumps](#) [NS0-527 Exam Questions](#)

[NS0-527 PDF Dumps](#) [NS0-527 VCE Dumps](#)

<https://www.braindump2go.com/ns0-527.html>

Answer: A

Explanation:

[NS0-527 Exam Dumps](#) [NS0-527 Exam Questions](#)

[NS0-527 PDF Dumps](#) [NS0-527 VCE Dumps](#)

<https://www.braindump2go.com/ns0-527.html>

Question:5

You experience a node outage as a result of a component failure in a high-availability (HA) pair. You replace the failed component and get the node booted up again, but are unable to perform the giveback operation. The

onscreen error is:

"Connected to partner, Takeover is not possible: Storage failover mailbox disk state is invalid, Local node has encountered errors while reading the storage failover partner's mailbox disks. Local node missing partner disks"

What are two ways to solve this problem? (Choose two.)

- A. Correct the shelf cabling errors.
- B. Destroy the root aggregate.
- C. Correct the failover group configuration.
- D. Destroy the mailboxes on both nodes.

Answer: AC

Explanation:

Question:6

You have just deployed a new AFF A400 cluster running ONTAP 9.7 that currently has no data aggregates created. You want to ensure that all new data aggregates are encrypted before you migrate production data to the new AFF A400 cluster.

In this scenario, which two actions would you use to accomplish this task? (Choose two.)

- A. After you create data aggregates, convert them to a NetApp Aggregate Encryption aggregate including root aggregates.
- B. Ensure that you have the NetApp Volume Encryption license installed.
- C. Ensure that the AFF A400 has self-encrypting drives.
- D. After you create a data aggregate, verify that it is encrypted by default.

Answer: AD

Explanation:

[NS0-527 Exam Dumps](#) [NS0-527 Exam Questions](#)

[NS0-527 PDF Dumps](#) [NS0-527 VCE Dumps](#)

<https://www.braindump2go.com/ns0-527.html>

Question: 7

[NS0-527 Exam Dumps](#) [NS0-527 Exam Questions](#)

[NS0-527 PDF Dumps](#) [NS0-527 VCE Dumps](#)

<https://www.braindump2go.com/ns0-527.html>

You are the administrator of an ONTAP 9.7 cluster. You configured an hourly Snapshot schedule for all volumes. One of your users accidentally deleted an important spreadsheet file on an SMB share. This file must be restored within a minimum amount of time.

Which two actions satisfy this requirement? (Choose two.)

- A. On the cluster CLI, issue the volume clone restore command.
- B. On the cluster CLI, issue the volume snapshot restore-file command.
- C. In Windows Explorer, right-click on the SMB share where the file was deleted, go to "Previous Versions" and select the file, then copy it to the original location.
- D. In ONTAP System Manager, navigate to the volume where the share resides, click on "Snapshot Copies" and restore the latest Snapshot copy.

Answer: BC

Explanation:

Section: (none)

Explanation

Question:8

You are asked to re-purpose a NetApp FAS cluster. You need to verify that all encrypted data has been securely erased.

Which two features would allow you to securely re-purpose the array? (Choose two.)

- A. Secure Purge
- B. SnapLock Compliance
- C. Disk Sanitize
- D. NetApp Aggregate Encryption

Answer: AD

Explanation:

Reference: <https://docs.netapp.com/ontap-9/index.jsp?topic=%2Fcom.netapp.doc.pow-nve%2FGUID-EAD13D8E-0219-45B6-A2C6-B25B76C9CA1A.html>

[NS0-527 Exam Dumps](#) [NS0-527 Exam Questions](#)

[NS0-527 PDF Dumps](#) [NS0-527 VCE Dumps](#)

<https://www.braindump2go.com/ns0-527.html>

Question:9

Click the Exhibit button.

[NS0-527 Exam Dumps](#) [NS0-527 Exam Questions](#)

[NS0-527 PDF Dumps](#) [NS0-527 VCE Dumps](#)

<https://www.braindump2go.com/ns0-527.html>

```
cluster1::*> network test-path -source-node node1 -destination-cluster cluster1 -de
```

```
Test Duration: 10.65 secs  
Send Throughput: 1092.65 MB/sec  
Receive Throughput: 1092.65 MB/sec  
MB Sent: 11633.69  
MB Received: 11633.69  
Avg Latency: 64.40 ms  
Min Latency: 2.41 ms  
Max Latency: 2099.17 ms
```

You need to verify that you have a 10 Gb path between two clusters for SnapMirror traffic. Referring to the exhibit, how fast is the network path between the clusters?

- A. 10 Mb
- B. 100Mb
- C. 1 Gb
- D. 10 Gb

Answer: C

Explanation:

Reference: <https://docs.netapp.com/ontap-9/topic/com.netapp.doc.dot-cm-nmg/Network%20and%20LIF%20management.pdf>

Question: 10

Which two statements are correct about configuring a peering connection between clusters? (Choose two.)

- A. The LIFs should be on the same subnet.
- B. You must use at least one intercluster LIF per node.
- C. You must use one cluster LIF per node per network.
- D. The intercluster LIFs must have full connectivity to each other.

Answer: BD

Explanation:

Reference: <https://docs.netapp.com/ontap-9/index.jsp?topic=%2Fcom.netapp.doc.pow-csp%2FGUID-0F81B700-7B79-456F-9C89-3A7D6451AEB6.html>

[NS0-527 Exam Dumps](#) [NS0-527 Exam Questions](#)

[NS0-527 PDF Dumps](#) [NS0-527 VCE Dumps](#)

<https://www.braindump2go.com/ns0-527.html>

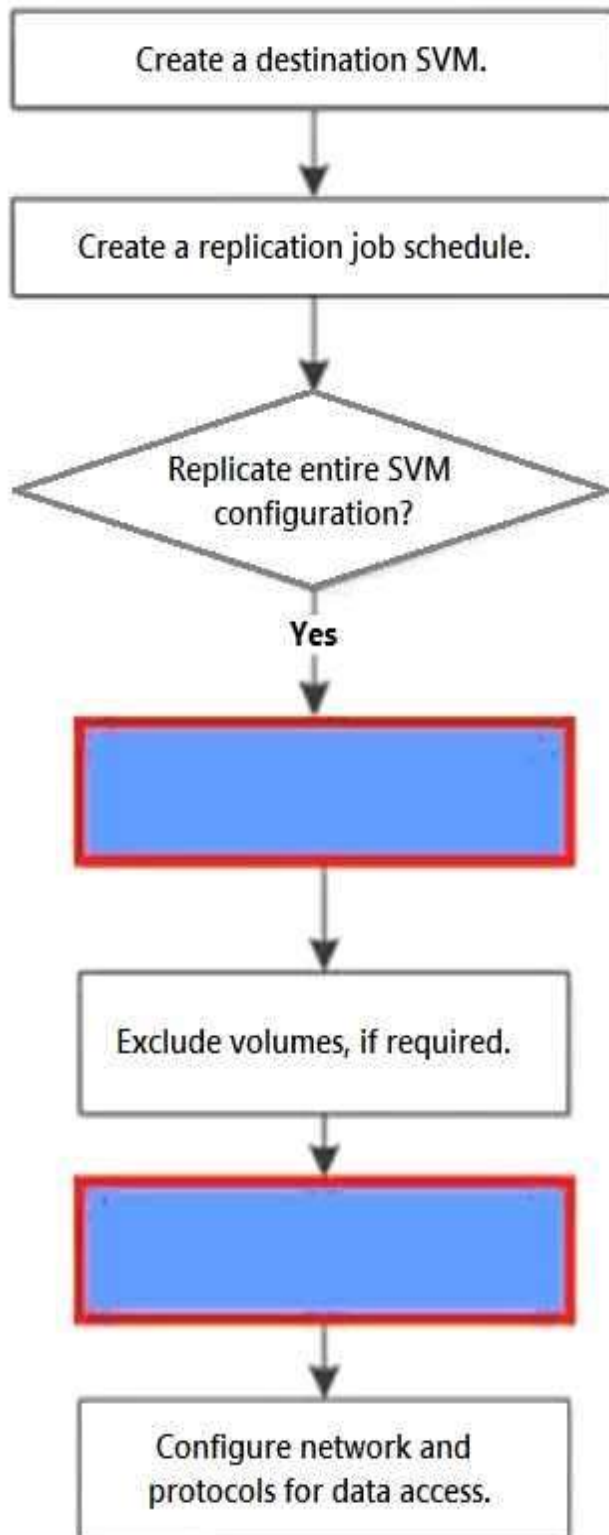
Question: 11

Click the Exhibit button.

[NS0-527 Exam Dumps](#) [NS0-527 Exam Questions](#)

[NS0-527 PDF Dumps](#) [NS0-527 VCE Dumps](#)

<https://www.braindump2go.com/ns0-527.html>



You must set up SVM replication for the first time using CLI. This replication will be used for DR purposes. The SVM configuration does not need to be replicated at this time. In this configuration,

[NS0-527 Exam Dumps](#) [NS0-527 Exam Questions](#)

[NS0-527 PDF Dumps](#) [NS0-527 VCE Dumps](#)

<https://www.braindump2go.com/ns0-527.html>

you will be reusing a default policy.

Referring to the exhibit, what are two missing steps from the SVM replication workflow? (Choose two.)

[NS0-527 Exam Dumps](#) [NS0-527 Exam Questions](#)

[NS0-527 PDF Dumps](#) [NS0-527 VCE Dumps](#)

<https://www.braindump2go.com/ns0-527.html>

- A. Excludes specific LIFs and protocols from the replication policy.
- B. Create a relationship with the id-preserve option set to false.
- C. Initialize the newly created SnapMirror relationship.
- D. Initialize the relationship with the id-preserve option set to true.

Answer: BD

Explanation:

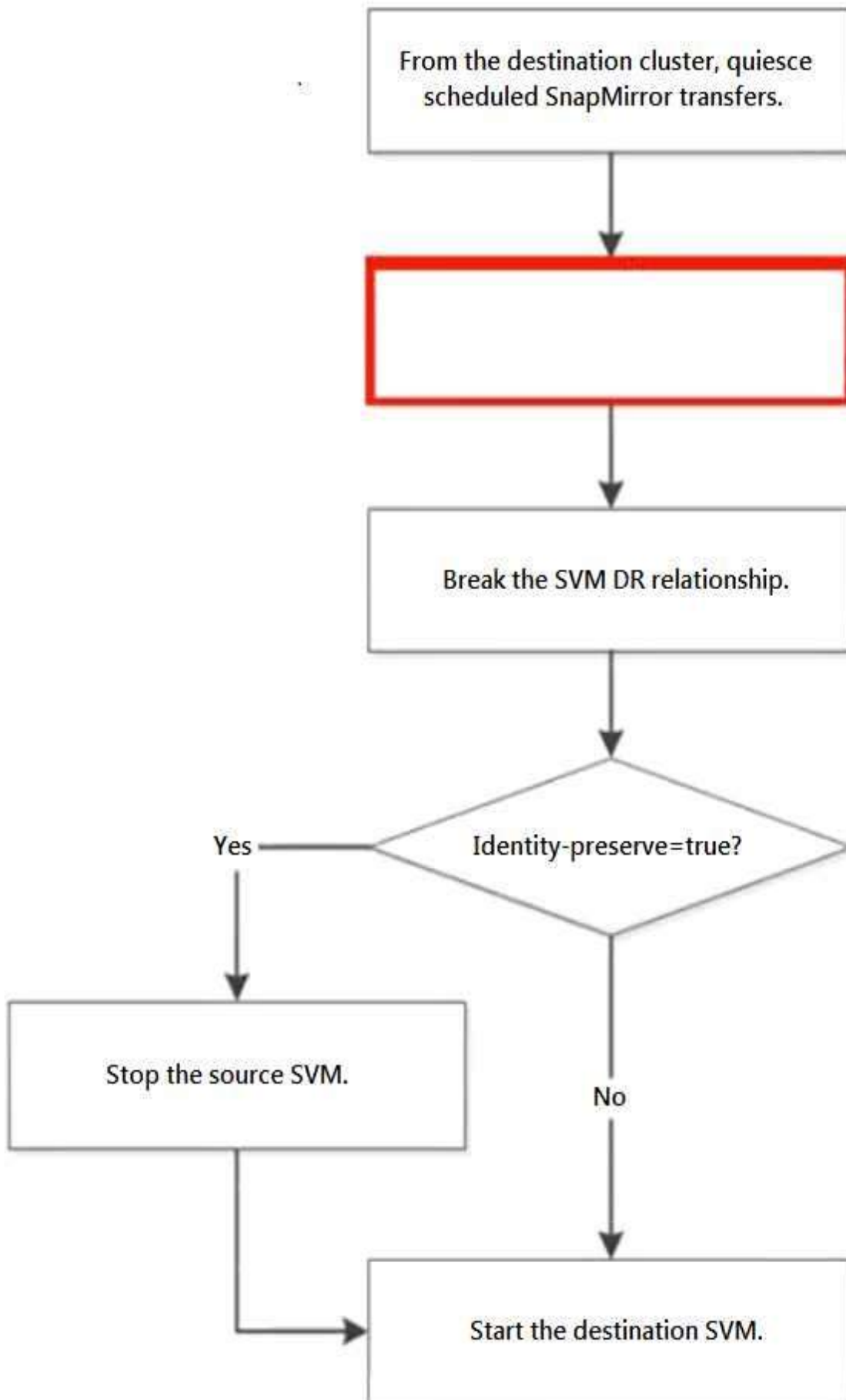
Question: 12

Click the Exhibit button.

[NS0-527 Exam Dumps](#) [NS0-527 Exam Questions](#)

[NS0-527 PDF Dumps](#) [NS0-527 VCE Dumps](#)

<https://www.braindump2go.com/ns0-527.html>



In an ONTAP environment, an SVM-DR relationship exists between your AFF A220 cluster and your FAS2720 cluster, with identity preserve enabled. You are asked to test the disaster recovery workflow in an upcoming maintenance window.

Referring to the exhibit, which step should be performed next to test the recovery workflow?

- A. Delete the SVM-DR relationship.
- B. Pause any ongoing transfers.
- C. Abort any ongoing transfers.
- D. Update any ongoing transfers.

Answer: C

Explanation:

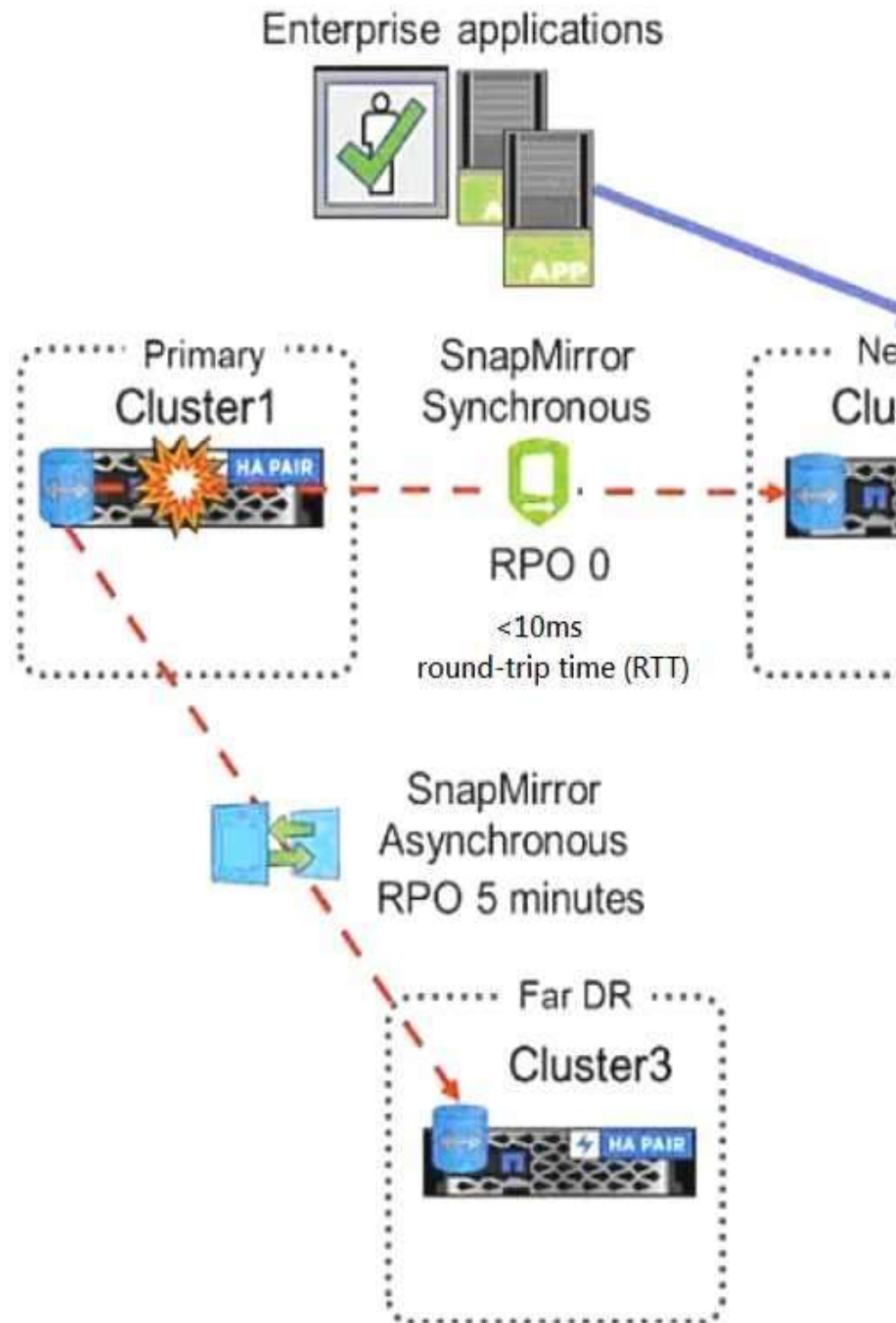
Question: 13

Click the Exhibit button.

[NS0-527 Exam Dumps](#) [NS0-527 Exam Questions](#)

[NS0-527 PDF Dumps](#) [NS0-527 VCE Dumps](#)

<https://www.braindump2go.com/ns0-527.html>



Referring to the exhibit, which three would be used to configure the three-way Data Center Disaster Recovery topology replication schedules? (Choose three.)

A. Active IQ Unified Manager

[NS0-527 Exam Dumps](#) [NS0-527 Exam Questions](#)

[NS0-527 PDF Dumps](#) [NS0-527 VCE Dumps](#)

<https://www.braindump2go.com/ns0-527.html>

- B. ActiveIQ
- C. ONTAPCLI
- D. ONTAP Select
- E. ONTAP System Manager

[NS0-527 Exam Dumps](#) [NS0-527 Exam Questions](#)

[NS0-527 PDF Dumps](#) [NS0-527 VCE Dumps](#)

<https://www.braindump2go.com/ns0-527.html>

Answer: CDE

Explanation:

Reference: http://197.253.9.244/ontap%209-5/Cluster%20Admin/2_Student%20Guide/STRSW-ILT-ONTAPADM_StudentGuide.pdf

Question: 14

You want to use a Fabric Pool to store destination SnapMirror data to an external capacity tier. Which tiering policy would be used in this scenario?

- A. auto
- B. snapshot-only
- C. none
- D. backup

Answer: D

Explanation:

Reference: <https://community.netapp.com/t5/ONTAP-Discussions/FabricPool-tiering-Policy/td-p/138250>

Question: 15

You must manually upgrade your company's 8-node cluster from ONTAP 9.5 to ONTAP 9.7. Due to the sensitivity of the data that is being stored on the cluster, it is company policy to perform these upgrades one node at a time.

What are two steps that you must perform to accomplish this task? (Choose two.)

- A. Terminate active NFS connections.
- B. Move Epsilon to maintain cluster quorum.
- C. Terminate active SMB connections.
- D. Change disk ownership.

Answer: BC

Explanation:

[NS0-527 Exam Dumps](#) [NS0-527 Exam Questions](#)

[NS0-527 PDF Dumps](#) [NS0-527 VCE Dumps](#)

<https://www.braindump2go.com/ns0-527.html>

Question: 16

To assist with capacity planning, your supervisor wants to receive weekly capacity summary reports

[NS0-527 Exam Dumps](#) [NS0-527 Exam Questions](#)

[NS0-527 PDF Dumps](#) [NS0-527 VCE Dumps](#)

<https://www.braindump2go.com/ns0-527.html>

using e- mail for all on-premises ONTAP clusters. You are asked to implement a solution that has no additional software licensing costs.

Which action accomplishes this task?

- A. Configure Cloud Insights Premium Edition.
- B. Create a capacity dashboard in Active IQ Digital Advisor.
- C. Configure capacity and utilization reports in Active IQ Unified Manager.
- D. Configure Cloud Insights Basic Edition.

Answer: C

Explanation:

Question: 17

You are asked to enable WORM technology on a large amount of legal data.

- a. The legal team asks that a designated user group have the ability to delete files as needed.

What would satisfy the legal team's requirements?

- A. SnapLock Enterprise
- B. SnapVault
- C. SnapCenter Plug-in for Microsoft SQL Server
- D. SnapLock Compliance

Answer: A

Explanation:

Reference: <https://csclub.uwaterloo.ca/~ehashman/netapp/ontap/archive.pdf> (147)

Question: 18

An ONTAP administrator is trying to configure a three-way-disaster recovery solution. Cluster 2 is within 50 km of Cluster 1, the primary cluster, with an RTT of 7 ms. Cluster 3 is over 300 km from Cluster 1 with an RTT of 29 ms.

In this scenario, what are two topologies that would accomplish this task? (Choose two.)

- A. a cascade topology from Cluster 1 to Cluster 2 with SnapMirror Synchronous, and then SnapMirror asynchronous from Cluster 2 to Cluster 3
- B. a fan out topology with SnapMirror Synchronous from Cluster 1 to Cluster 2 and SnapMirror

[NS0-527 Exam Dumps](#) [NS0-527 Exam Questions](#)

[NS0-527 PDF Dumps](#) [NS0-527 VCE Dumps](#)

<https://www.braindump2go.com/ns0-527.html>

Synchronous to Cluster 3

C. a fan out topology with SnapMirror Synchronous from Cluster 1 to Cluster 2 and SnapMirror asynchronous from Cluster 1 to Cluster 3

D. a cascade topology from Cluster 1 to Cluster 2 with SnapMirror Synchronous, and then SnapMirror

[NS0-527 Exam Dumps](#) [NS0-527 Exam Questions](#)

[NS0-527 PDF Dumps](#) [NS0-527 VCE Dumps](#)

<https://www.braindump2go.com/ns0-527.html>

Answer: AC

Explanation:

Question: 19

Your backup cluster reached both the maximum number of parallel replication transfers and the maximum number of FlexVol volumes per node. You need to increase these maximum numbers.

In this scenario, which license you would install on the destination to accomplish this task?

- A. SnapRestore License
- B. SnapMirror Sync License
- C. Data Protection Optimized License
- D. SnapVault License

Answer: B

Explanation:

Reference: <https://library.netapp.com/ecmdocs/ECMP1608428/html/GUID-5C697C7D-FB33-4F4F-8CC4-A8646CD7561B.html>

Question: 20

A customer wants a new solution that reaches a near-zero recovery time objective (RTO) and a zero recovery point objective (RPO).

In this scenario, which NetApp solution satisfies the requirements?

- A. NDMP
- B. MetroCluster
- C. SnapMirror
- D. SnapVault

Answer: C

Explanation:

Reference: <https://blog.netapp.com/effective-disaster-recovery-solution>

[NS0-527 Exam Dumps](#) [NS0-527 Exam Questions](#)

[NS0-527 PDF Dumps](#) [NS0-527 VCE Dumps](#)

<https://www.braindump2go.com/ns0-527.html>

Question: 21

[NS0-527 Exam Dumps](#) [NS0-527 Exam Questions](#)

[NS0-527 PDF Dumps](#) [NS0-527 VCE Dumps](#)

<https://www.braindump2go.com/ns0-527.html>

You want to write custom workflows to perform disaster recovery operations for your environment in OnCommand Workflow Automation.

In this scenario, which two scripting languages would be used to accomplish this task? (Choose two.)

- A. Perl
- B. Powershell
- C. PHP
- D. Python

Answer: AB

Explanation:

Reference: https://library.netapp.com/ecm/ecm_download_file/ECMP12470054 (8)

Question: 22

Click the Exhibit button.

Calculate Azure Costs with
Cloud Volumes ONTAP

Capacity TB
Modifying Capacity

Azure VM Type

High Availability ☒

Tier to Azure Blob ☐

Use Volume Clones %

Advanced ▾



Using the NetApp Cloud TCO calculator, a customer wants to determine whether running Cloud Volumes ONTAP in Azure will be more cost effective than running native cloud services.

Referring to the exhibit, which action would satisfy the requirement?

- A. Turn off High Availability.

[NS0-527 Exam Dumps](#) [NS0-527 Exam Questions](#)

[NS0-527 PDF Dumps](#) [NS0-527 VCE Dumps](#)

<https://www.braindump2go.com/ns0-527.html>

- B. Change the Azure VM Type to DS3_V2.
- C. Turn on Tier to Azure Blob.
- D. Change the Azure VM Type to DS14_V2.

[NS0-527 Exam Dumps](#) [NS0-527 Exam Questions](#)

[NS0-527 PDF Dumps](#) [NS0-527 VCE Dumps](#)

<https://www.braindump2go.com/ns0-527.html>

Answer: B

Explanation:

Reference: <https://cloud.netapp.com/azure-calculator>

Question: 23

Your DevOps team reported that one virtual machine on a VMware datastore has been corrupted due to a ransomware attack.

In this scenario, which two methods would solve the issue? (Choose two.)

- A. Restore the Snapshot copy of the volume from ONTAP System Manager.
- B. Restore the VM using SnapCenter Plug-in for VMware vSphere.
- C. Restore the datastore using SnapCenter Plug-in for VMware vSphere.
- D. Clone the volume's Snapshot copy prior to the attack, mount, and storage vMotion.

Answer: CD

Explanation:

Question: 24

You are running a NetApp AFF A220 cluster. Each node has one volume. You create Snapshot copies on both volumes every four hours and keep the copies for 30 days. You are running out of disk space and want to free up space.

In this scenario, what do you do?

- A. Add a disk shelf with NL-SAS HDDs.
- B. Activate aggregate-inline deduplication.
- C. Add a capacity tier and set the tiering policy to snapshot-only.
- D. Activate aggregate-background deduplication.

Answer: B

Explanation:

Reference: https://www.state.wv.us/admin/purchase/Bids/FY2020/B_0702_TAX2000000001_03.pdf

[NS0-527 Exam Dumps](#) [NS0-527 Exam Questions](#)

[NS0-527 PDF Dumps](#) [NS0-527 VCE Dumps](#)

<https://www.braindump2go.com/ns0-527.html>

Question: 25

Click the Exhibit button.

[NS0-527 Exam Dumps](#) [NS0-527 Exam Questions](#)

[NS0-527 PDF Dumps](#) [NS0-527 VCE Dumps](#)

<https://www.braindump2go.com/ns0-527.html>

aff::> cluster peer ping

Node: aff-01 Destination Cluster: aff

Destination Node	IP Address	Count	TTL	RTT(ms)	Status
------------------	------------	-------	-----	---------	--------

aff-01	10.193.67.58	1	64	0.053	interface_reachable
aff-01	192.168.89.100	1	64	0.061	interface_reachable
aff-02	10.193.67.60	1	64	0.173	interface_reachable
aff-02	192.168.89.101	1	64	0.428	interface_reachable

Node: aff-01 Destination Cluster: ontap9-tme-8040

Destination Node	IP Address	Count	TTL	RTT(ms)	Status
------------------	------------	-------	-----	---------	--------

ontap9-tme-8040-01	192.168.90.200	1	63	0.602	interface_reachable
ontap9-tme-8040-02	192.168.90.201	1	63	0.584	interface_reachable

Node: aff-01 Destination Cluster: tme-ontap-prd

Destination Node	IP Address	Count	TTL	RTT(ms)	Status
------------------	------------	-------	-----	---------	--------

tme-ontap-prd-01	10.193.67.21	1	64	0.174	interface_reachable
tme-ontap-prd-02	10.193.67.22	1	64	0.17	interface_reachable

Node: aff-02 Destination Cluster: aff

Destination Node	IP Address	Count	TTL	RTT(ms)	Status
------------------	------------	-------	-----	---------	--------

aff-01	10.193.67.58	1	64	0.178	interface_reachable
aff-01	192.168.89.100	1	64	0.188	interface_reachable
aff-02	10.193.67.60	1	64	0.054	interface_reachable
aff-02	192.168.89.101	1	64	0.057	interface_reachable

Node: aff-02 Destination Cluster: ontap9-tme-8040

Destination Node	IP Address	Count	TTL	RTT(ms)	Status
------------------	------------	-------	-----	---------	--------

ontap9-tme-8040-01	192.168.90.200	1	63	0.569	interface_reachable
ontap9-tme-8040-02	192.168.90.201	1	63	0.627	interface_reachable

Node: aff-02 Destination Cluster: tme-ontap-prd

Destination Node	IP Address	Count	TTL	RTT(ms)	Status
------------------	------------	-------	-----	---------	--------

tme-ontap-prd-01	10.193.67.21	1	64	0.179	interface_reachable
tme-ontap-prd-02	10.193.67.22	1	64	0.177	interface_reachable

16 entries were displayed.

You are asked to set up a SnapMirror relationship to protect some Oracle DB volumes on both nodes of the aff-01 and aff-02 clusters. You are using the 1 Gb network and the other nodes all have free

[NS0-527 Exam Dumps](#) [NS0-527 Exam Questions](#)

[NS0-527 PDF Dumps](#) [NS0-527 VCE Dumps](#)

<https://www.braindump2go.com/ns0-527.html>

space to support the mirror.

Referring to the exhibit, which two nodes would provide the least network transfer time for the relationship? (Choose two.)

[NS0-527 Exam Dumps](#) [NS0-527 Exam Questions](#)

[NS0-527 PDF Dumps](#) [NS0-527 VCE Dumps](#)

<https://www.braindump2go.com/ns0-527.html>

- A. aff-01 to tme-ontap-prd-01
- B. aff-02 to tme-ontap-prd-02
- C. aff-02 to ontap9-tme-8040-02
- D. aff-02 to ontap9-tme-8040-01

Answer: BC

Explanation:

Question: 26

A customer has just purchased a new 2-node AFF A220 cluster running ONTAP 9.7 and moved the older 4- node FAS2650 cluster running ONTAP 9.5 to an off-site location. They want to configure replication to the FAS2650 cluster for both disaster recovery and long-term archiving.

In this scenario, how would the customer accomplish this task?

- A. Upgrade the FAS2650 cluster to ONTAP 9.7, then configure SnapMirror with type TDP.
- B. Leave the ONTAP versions, then configure SnapMirror with type XDP.
- C. Downgrade the AFF A220 cluster to ONTAP 9.5, then configure SnapMirror with type XDP.
- D. Leave the ONTAP versions, then configure SnapMirror with type DP.

Answer: A

Explanation:

Question: 27

Your customer wants to implement a solution to protect only a select number of NFSv3 volumes in a particular aggregate that stores their mission-critical application data

a. The customer wants the volume's data replicated to secondary storage and have application write operations fail if they cannot be replicated. The customer needs to maintain a zero RPO and a very low RTO.

In this scenario, which solution satisfies these requirements?

- A. SnapMirror Synchronous using Sync mode
- B. Mirrored aggregates using SyncMirror
- C. SnapMirror Synchronous using StrictSync mode
- D. Mirrored SVMs using MetroCluster

[NS0-527 Exam Dumps](#) [NS0-527 Exam Questions](#)

[NS0-527 PDF Dumps](#) [NS0-527 VCE Dumps](#)

<https://www.braindump2go.com/ns0-527.html>

Answer: B

Explanation:

[NS0-527 Exam Dumps](#) [NS0-527 Exam Questions](#)

[NS0-527 PDF Dumps](#) [NS0-527 VCE Dumps](#)

<https://www.braindump2go.com/ns0-527.html>

Question: 28

Click the Exhibit button.

A customer wants to have a local mirror and a remote mirror of their data.

Referring to the exhibit, which two solutions satisfy these requirements? (Choose two.)

- A. Solution I
- B. Solution IV
- C. Solution II
- D. Solution III

Answer: BC

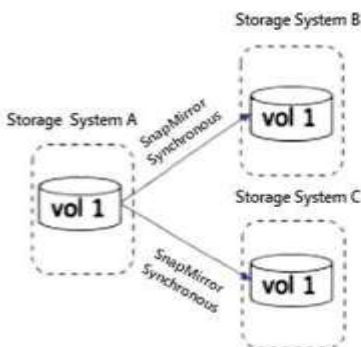
Explanation:

Question: 29

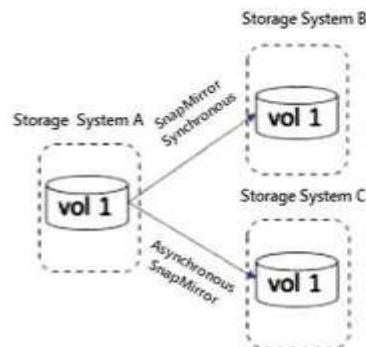
What are three methods of configuring SnapMirror replication relationships? (Choose three.)

- A. Use Active IQ.
- B. Use the ONTAP command line.
- C. Use OnCommand Insight.
- D. Use ONTAP System Manager.
- E. Use Active IQ Unified Manager.

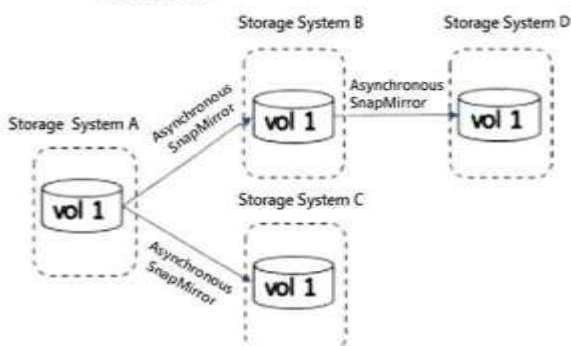
Solution I



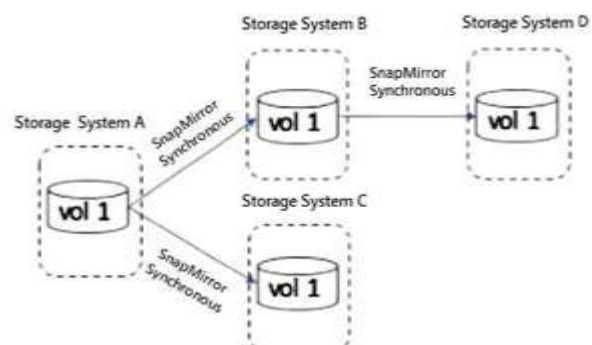
Solution II



Solution III



Solution IV



Answer: BD

Explanation:

Reference:

<https://www.netapp.com/ja/media/13480-tr4705.pdf>

Ans

wer: CDE

Explanatio
n:

Question:

30

You are asked to implement a NetApp solution that has high availability with transparent failover between two data centers.

Which two solutions satisfy this requirement? (Choose two.)

- A. ONTAP Select
- B. SnapVault
- C. SnapMirror or Sync
- D. MetroCluster

[NS0-527 Exam Dumps](#) [NS0-527 Exam Questions](#)

[NS0-527 PDF Dumps](#) [NS0-527 VCE Dumps](#)

<https://www.braindump2go.com/ns0-527.html>